

Data Path : Z:\pestpcbsrv\HPCHEM1\FID_D\Data\FD101420AR\
 Data File : FD035033.D
 Signal(s) : FID2B.CH
 Acq On : 14 Oct 2020 17:54
 Operator : DD\AJ
 Sample : L4374-06DL 40X
 Misc :
 ALS Vial : 60 Sample Multiplier: 1

Integration File: autoint1.e
 Quant Time: Oct 15 02:47:07 2020
 Quant Method : Z:\pestpcbsrv\HPCHEM1\FID_D\methods\Aromatic EPH 100120.M
 Quant Title : GC Extractables
 QLast Update : Fri Oct 02 10:31:12 2020
 Response via : Initial Calibration
 Integrator: ChemStation 6890 Scale Mode: Large solvent peaks clipped

Volume Inj. : 1 µl
 Signal Phase : Rxi-1ms
 Signal Info : 20M x 0.18mm x 0.18µm

Compound	R.T.	Response	Conc Units

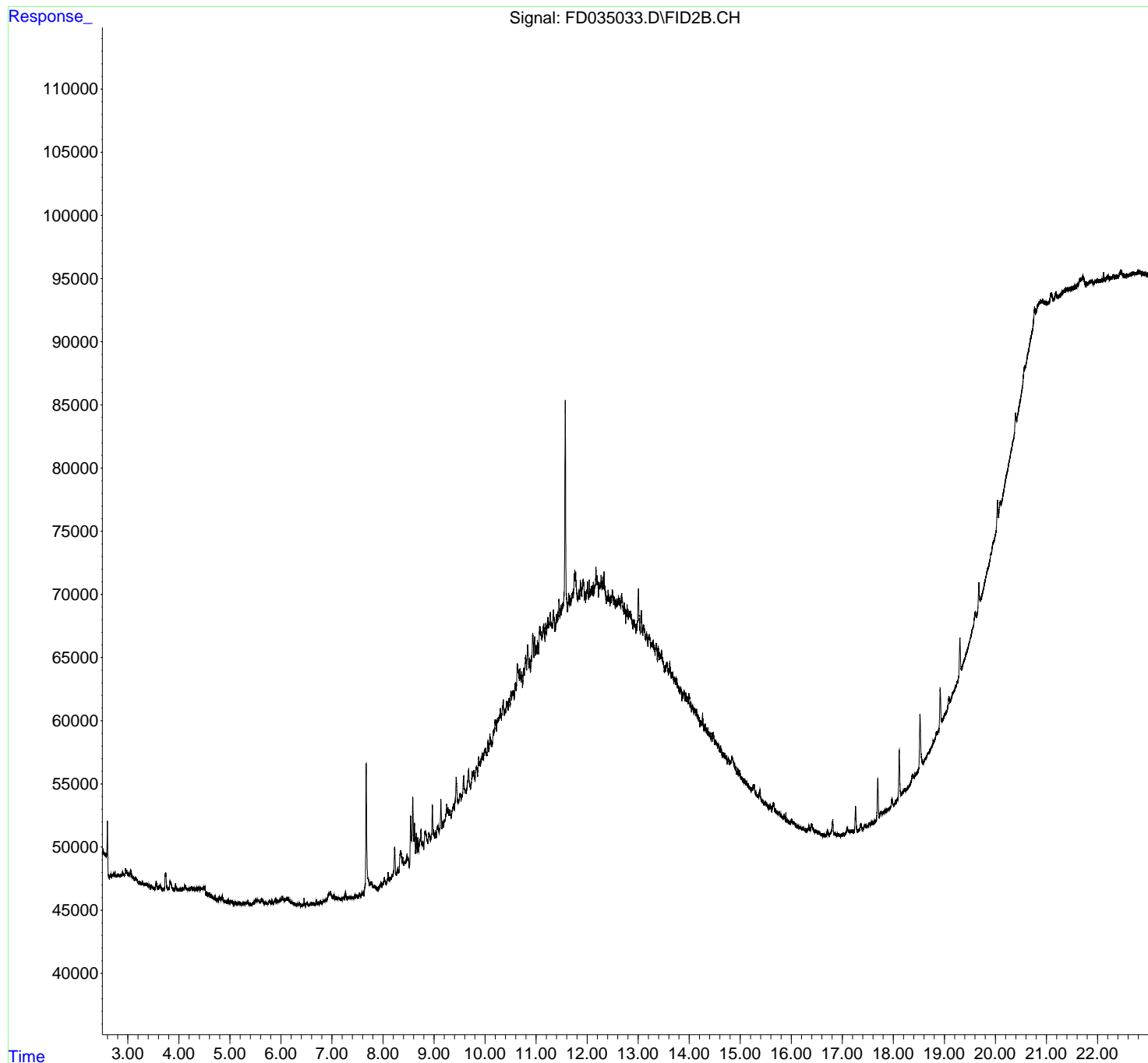
System Monitoring Compounds			
Target Compounds			

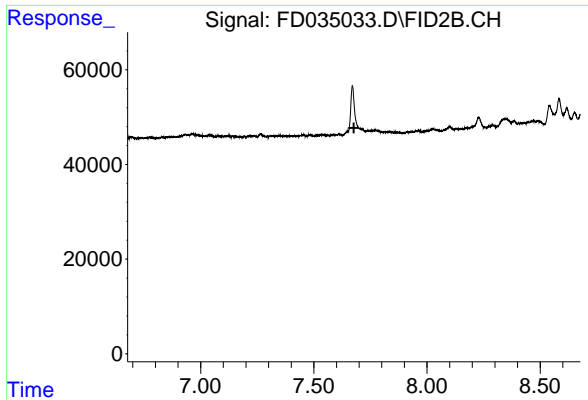
(f)=RT Delta > 1/2 Window (m)=manual int.

Data Path : Z:\pestpcbsrv\HPCHEM1\FID_D\Data\FD101420AR\
Data File : FD035033.D
Signal(s) : FID2B.CH
Acq On : 14 Oct 2020 17:54
Operator : DD\AJ
Sample : L4374-06DL 40X
Misc :
ALS Vial : 60 Sample Multiplier: 1

Integration File: autoint1.e
Quant Time: Oct 15 02:47:07 2020
Quant Method : Z:\pestpcbsrv\HPCHEM1\FID_D\methods\Aromatic EPH 100120.M
Quant Title : GC Extractables
QLast Update : Fri Oct 02 10:31:12 2020
Response via : Initial Calibration
Integrator: ChemStation 6890 Scale Mode: Large solvent peaks clipped

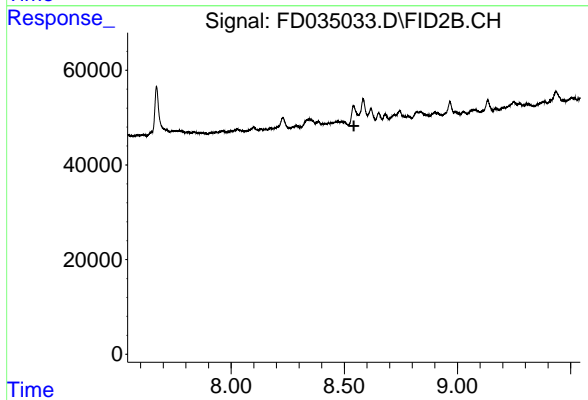
Volume Inj. : 1 μ l
Signal Phase : Rxi-1ms
Signal Info : 20M x 0.18mm x 0.18 μ m





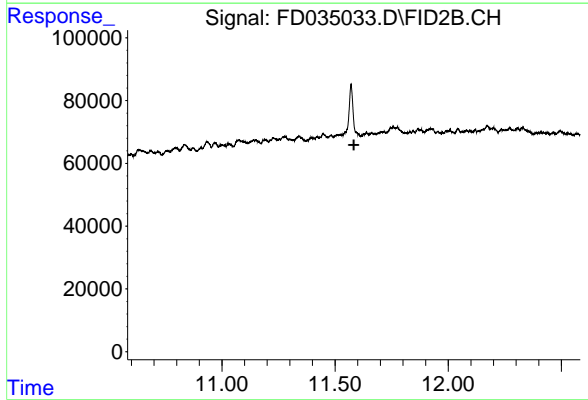
#4 2-Bromonaphthalene (SURR)

R.T.: 0.000 min
Exp R.T. : 7.677 min
Response: 0
Conc: N.D.



#6 2-Fluorobiphenyl (SURR)

R.T.: 0.000 min
Exp R.T. : 8.542 min
Response: 0
Conc: N.D.



#11 ortho-Terphenyl (SURR)

R.T.: 0.000 min
Exp R.T. : 11.583 min
Response: 0
Conc: N.D.