

Data Path : Z:\pestpcbsrv\HPCHEM1\FID_D\Data\FD101519AR\
 Data File : FD031011.D
 Signal(s) : FID2B.CH
 Acq On : 15 Oct 2019 11:55
 Operator : DD\AJ
 Sample : PB123739BS
 Misc :
 ALS Vial : 55 Sample Multiplier: 1

Integration File: autoint1.e
 Quant Time: Oct 16 01:17:56 2019
 Quant Method : Z:\pestpcbsrv\HPCHEM1\FID_D\methods\Aromatic EPH 101419.M
 Quant Title : GC Extractables
 QLast Update : Tue Oct 15 03:44:42 2019
 Response via : Initial Calibration
 Integrator: ChemStation 6890 Scale Mode: Large solvent peaks clipped

Volume Inj. : 1 µl
 Signal Phase : Rxi-1ms
 Signal Info : 20M x 0.18mm x 0.18µm

Compound	R.T.	Response	Conc Units

System Monitoring Compounds			
4) S 2-Bromonaphthalene (S... Spiked Amount 50.000	7.553	5616181	58.755 ug/ml Recovery = 117.51%
6) S 2-Fluorobiphenyl (SURR) Spiked Amount 50.000 Range 0 - 131	8.413	3765457	59.344 ug/ml Recovery = 118.69%
11) S ortho-Terphenyl (SURR) Spiked Amount 50.000	11.442	6085058	55.521 ug/ml Recovery = 111.04%
Target Compounds			
1) T 1,2,3-Trimethylbenzen...	4.363	3808937	38.397 ug/ml
2) T Naphthalene (C11.7)	5.895	6005131	59.310 ug/ml
3) T 2-Methylnaphthalene (...)	6.944	6310712	61.549 ug/ml
5) T Acenaphthylene (C15.06)	8.216	6355814	61.571 ug/ml
7) T Acenaphthene (C15.5)	8.512	6791920	62.222 ug/ml
8) T Fluorene (C16.55)	9.290	6925367	66.808 ug/ml
9) T Phenanthrene (C19.36)	10.683	7123504	68.189 ug/ml
10) T Anthracene (C19.43)	10.758	7021049	66.913 ug/ml
12) T Fluoranthene (C21.85)	12.490	7428611	69.929 ug/ml
13) T Pyrene (C20.8)	12.786	7281098	68.716 ug/ml
14) T Benzo[a]anthracene (C...)	14.653	6885158	71.667 ug/ml
15) T Chrysene (C27.41)	14.697	8236544	74.920 ug/ml
16) T benzo[b]fluoranthene ...	16.201	7145960	73.668 ug/ml
17) T Bnezo[k]fluoranthene ...	16.236	6955165	63.897 ug/ml
18) T Benzo[a]pyrene (C31.34)	16.579	6471089	65.943 ug/ml
19) T Indeno[1,2,3-cd]pyren...	17.945	6717850	74.325 ug/ml
20) T Dibenz[a,h]anthracene...	17.979	6231724	60.704 ug/ml
21) T Benzo[g,h,i]perylene ...	18.199	6487460	68.058 ug/ml

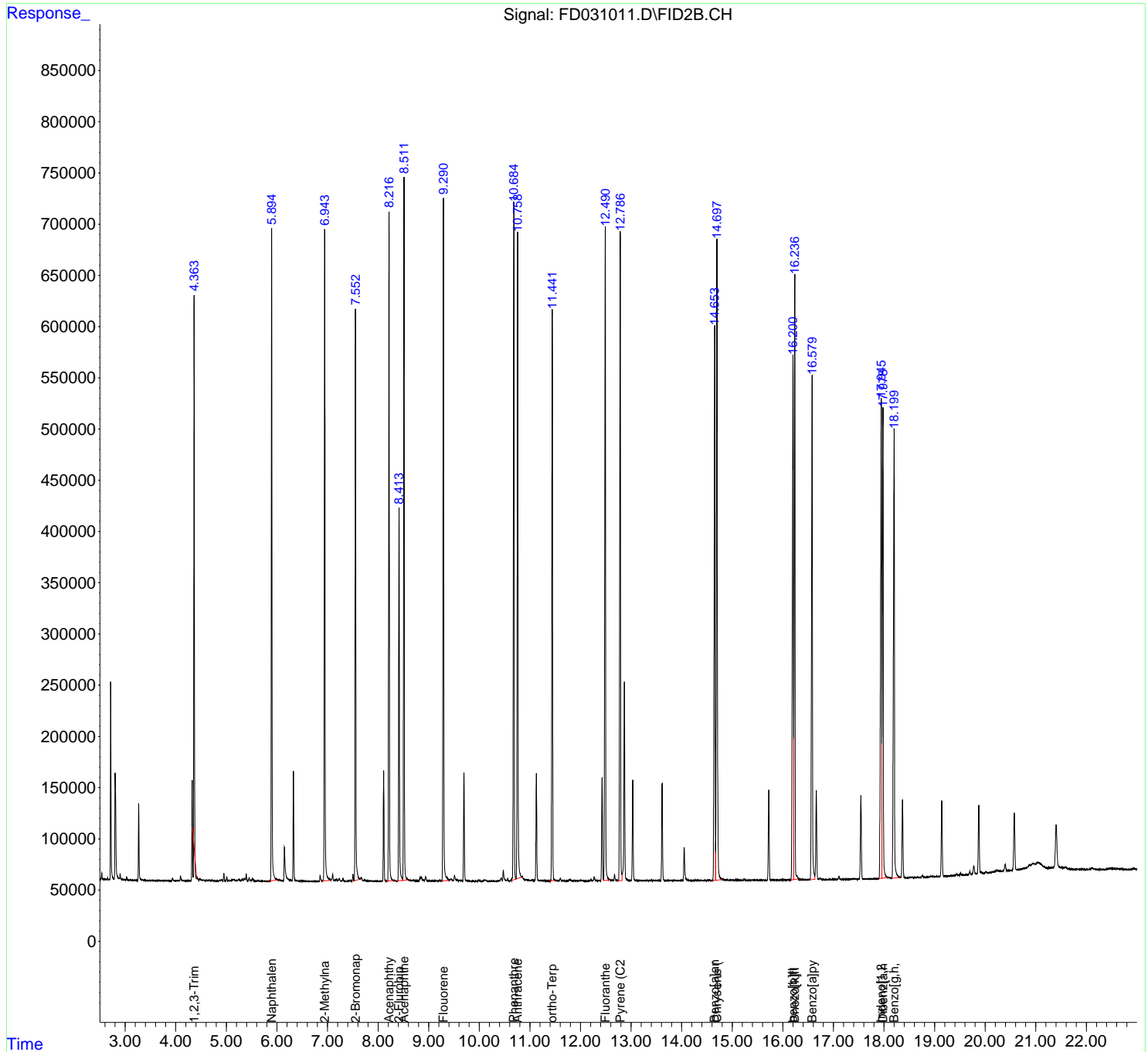
(f)=RT Delta > 1/2 Window

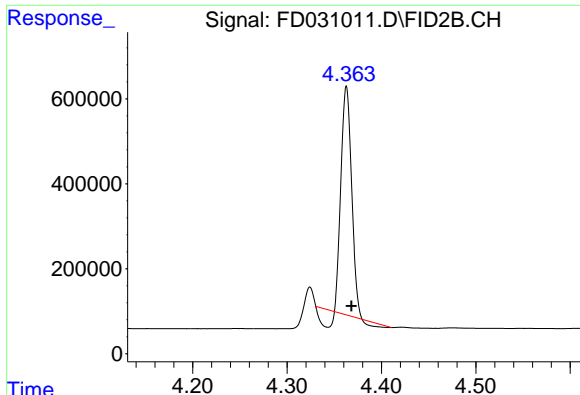
(m)=manual int.

Data Path : Z:\pestpcbsrv\HPCHEM1\FID_D\Data\FD101519AR\
 Data File : FD031011.D
 Signal(s) : FID2B.CH
 Acq On : 15 Oct 2019 11:55
 Operator : DD\AJ
 Sample : PB123739BS
 Misc :
 ALS Vial : 55 Sample Multiplier: 1

Integration File: autoint1.e
 Quant Time: Oct 16 01:17:56 2019
 Quant Method : Z:\pestpcbsrv\HPCHEM1\FID_D\methods\Aromatic EPH 101419.M
 Quant Title : GC Extractables
 QLast Update : Tue Oct 15 03:44:42 2019
 Response via : Initial Calibration
 Integrator: ChemStation 6890 Scale Mode: Large solvent peaks clipped

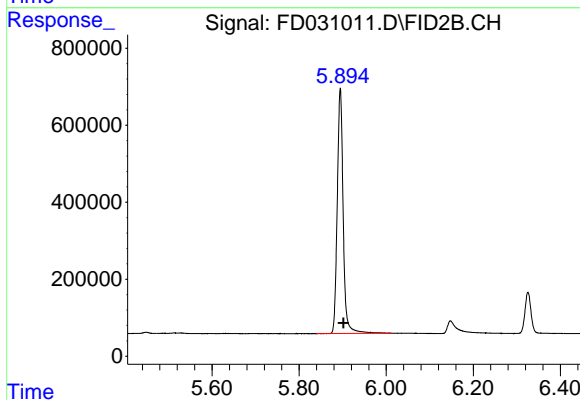
Volume Inj. : 1 µl
 Signal Phase : Rxi-1ms
 Signal Info : 20M x 0.18mm x 0.18µm





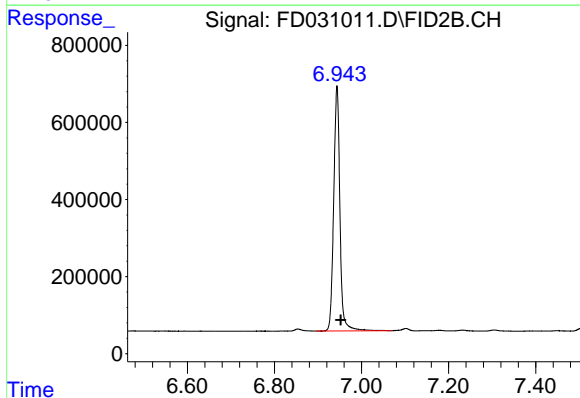
#1 1,2,3-Trimethylbenzene (C10.1)

R.T.: 4.363 min
Delta R.T.: -0.005 min
Response: 3808937
Conc: 38.40 ug/ml



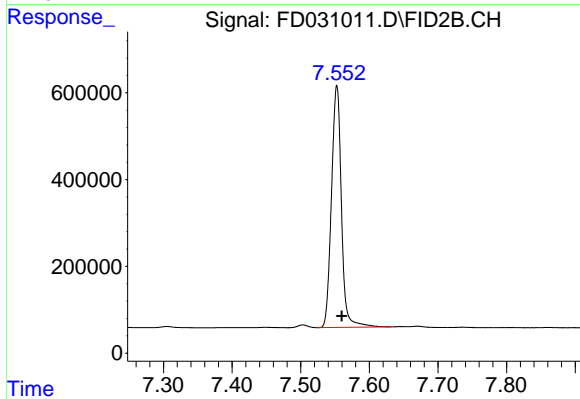
#2 Naphthalene (C11.7)

R.T.: 5.895 min
Delta R.T.: -0.007 min
Response: 6005131
Conc: 59.31 ug/ml



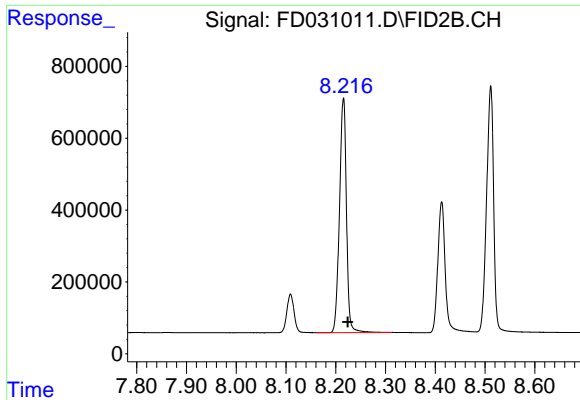
#3 2-Methylnaphthalene (C12.89)

R.T.: 6.944 min
Delta R.T.: -0.008 min
Response: 6310712
Conc: 61.55 ug/ml



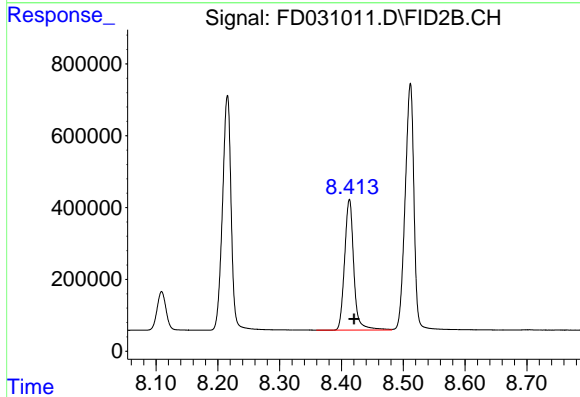
#4 2-Bromonaphthalene (SURR)

R.T.: 7.553 min
Delta R.T.: -0.007 min
Response: 5616181
Conc: 58.76 ug/ml



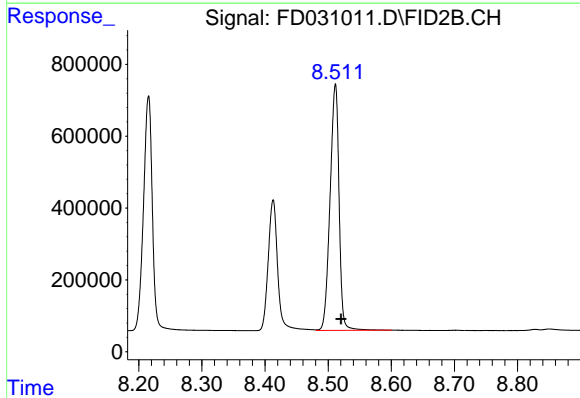
#5 Acenaphthylene (C15.06)

R.T.: 8.216 min
Delta R.T.: -0.009 min
Response: 6355814
Conc: 61.57 ug/ml



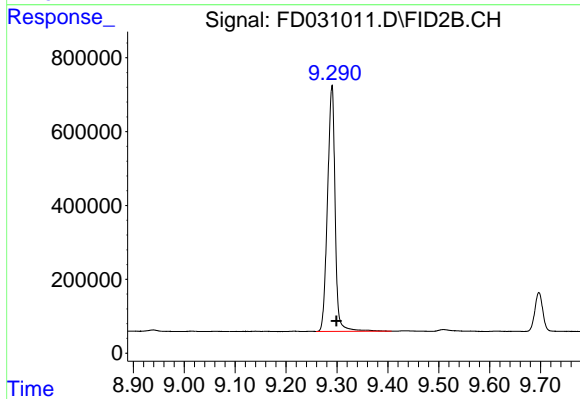
#6 2-Fluorobiphenyl (SURR)

R.T.: 8.413 min
Delta R.T.: -0.008 min
Response: 3765457
Conc: 59.34 ug/ml



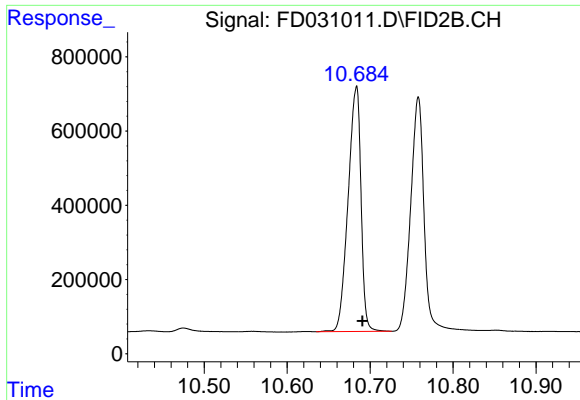
#7 Acenaphthene (C15.5)

R.T.: 8.512 min
Delta R.T.: -0.009 min
Response: 6791920
Conc: 62.22 ug/ml

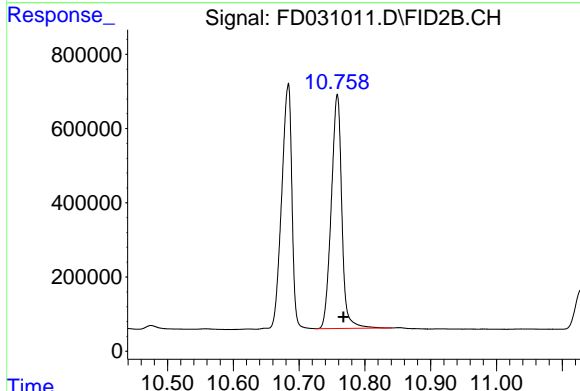


#8 Fluorene (C16.55)

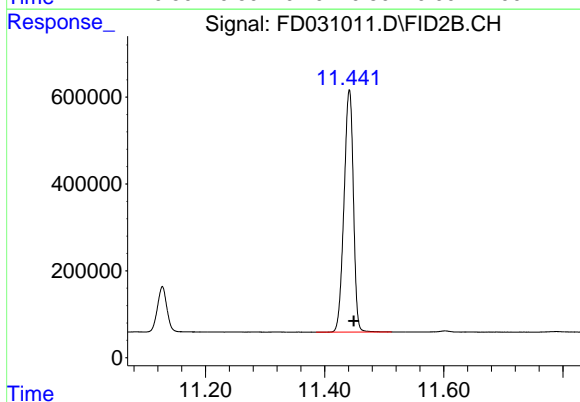
R.T.: 9.290 min
Delta R.T.: -0.009 min
Response: 6925367
Conc: 66.81 ug/ml



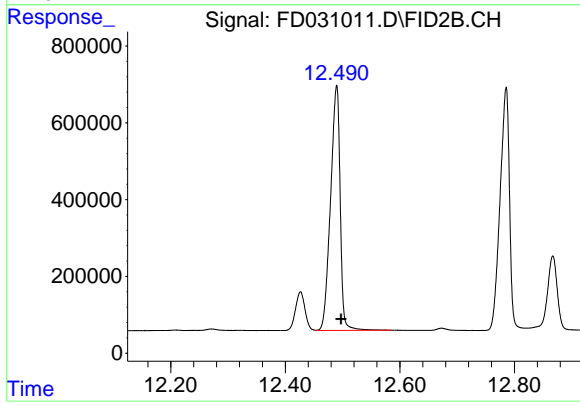
#9 Phenanthrene (C19.36)
R.T.: 10.683 min
Delta R.T.: -0.007 min
Response: 7123504
Conc: 68.19 ug/ml



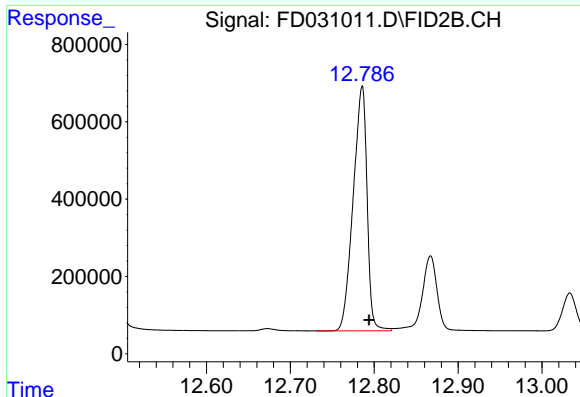
#10 Anthracene (C19.43)
R.T.: 10.758 min
Delta R.T.: -0.009 min
Response: 7021049
Conc: 66.91 ug/ml



#11 ortho-Terphenyl (SURR)
R.T.: 11.442 min
Delta R.T.: -0.008 min
Response: 6085058
Conc: 55.52 ug/ml

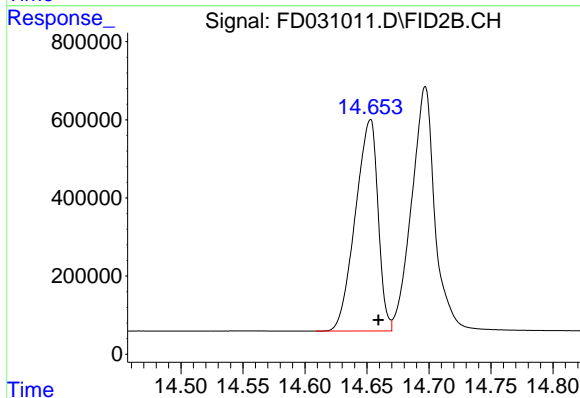


#12 Fluoranthene (C21.85)
R.T.: 12.490 min
Delta R.T.: -0.008 min
Response: 7428611
Conc: 69.93 ug/ml



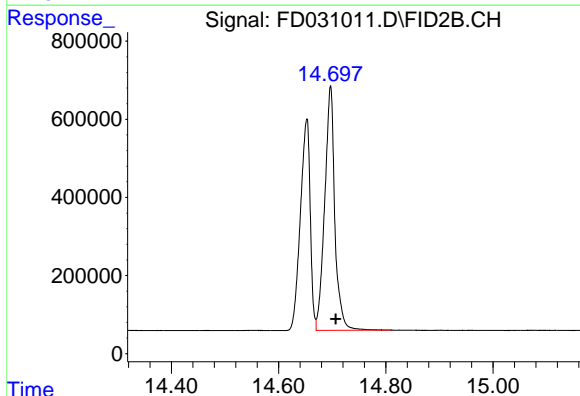
#13 Pyrene (C20.8)

R.T.: 12.786 min
Delta R.T.: -0.008 min
Response: 7281098
Conc: 68.72 ug/ml



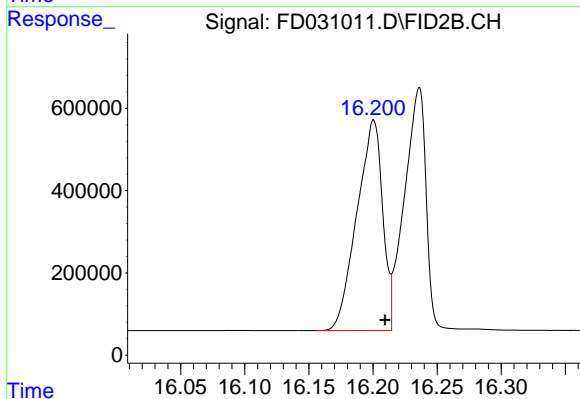
#14 Benzo[a]anthracene (C26.37)

R.T.: 14.653 min
Delta R.T.: -0.007 min
Response: 6885158
Conc: 71.67 ug/ml



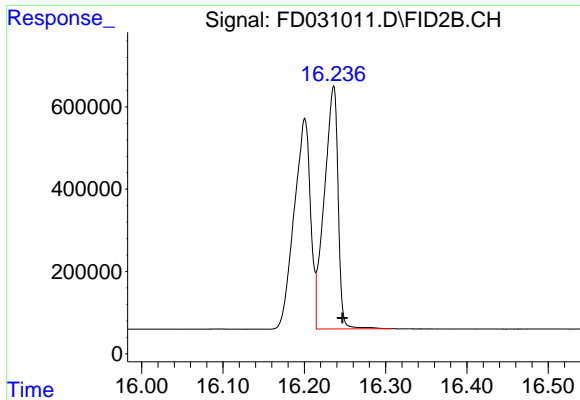
#15 Chrysene (C27.41)

R.T.: 14.697 min
Delta R.T.: -0.009 min
Response: 8236544
Conc: 74.92 ug/ml



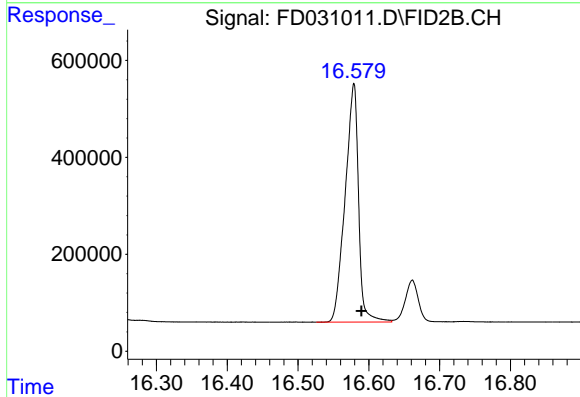
#16 benzo[b]fluoranthene (C30.41)

R.T.: 16.201 min
Delta R.T.: -0.009 min
Response: 7145960
Conc: 73.67 ug/ml



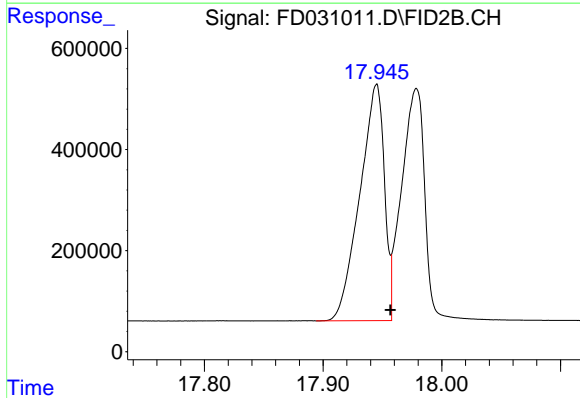
#17 Bnezo[k]fluoranthene (C30.14)

R.T.: 16.236 min
Delta R.T.: -0.011 min
Response: 6955165
Conc: 63.90 ug/ml



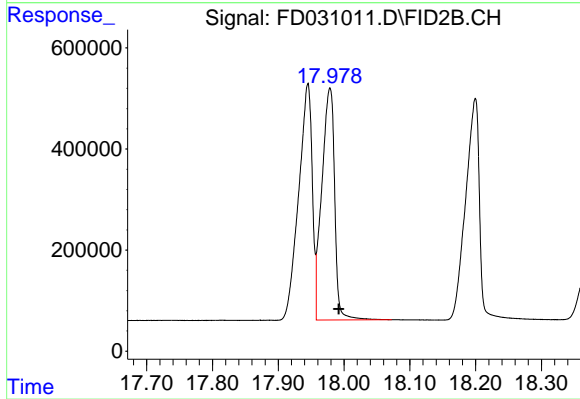
#18 Benzo[a]pyrene (C31.34)

R.T.: 16.579 min
Delta R.T.: -0.011 min
Response: 6471089
Conc: 65.94 ug/ml



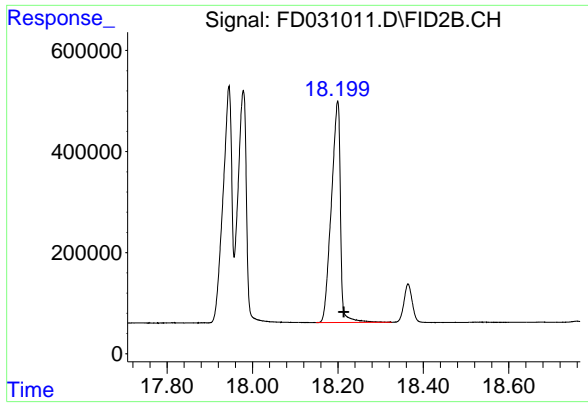
#19 Indeno[1,2,3-cd]pyrene (C35.01)

R.T.: 17.945 min
Delta R.T.: -0.012 min
Response: 6717850
Conc: 74.32 ug/ml



#20 Dibenz[a,h]anthracene (C30.36)

R.T.: 17.979 min
Delta R.T.: -0.013 min
Response: 6231724
Conc: 60.70 ug/ml



#21 Benzo[g,h,i]perylene (C34.01)

R.T.: 18.199 min
Delta R.T.: -0.015 min
Response: 6487460
Conc: 68.06 ug/ml