

Data Path : Z:\pestpcbsrv\HPCHEM1\FID_D\Data\FD101520AL\
 Data File : FD035086.D
 Signal(s) : FID2B.CH
 Acq On : 16 Oct 2020 3:23
 Operator : DD\AJ
 Sample : L4392-08DL 2X
 Misc :
 ALS Vial : 70 Sample Multiplier: 1

Integration File: autoint1.e
 Quant Time: Oct 16 04:12:31 2020
 Quant Method : Z:\pestpcbsrv\HPCHEM1\FID_D\methods\Alaphatic EPH 100120.M
 Quant Title : GC Extractables
 QLast Update : Fri Oct 02 09:52:32 2020
 Response via : Initial Calibration
 Integrator: ChemStation 6890 Scale Mode: Large solvent peaks clipped

Volume Inj. : 1 ul
 Signal Phase : Rxi-1ms
 Signal Info : 20M x 0.18mm x 0.18um

Compound	R.T.	Response	Conc Units

System Monitoring Compounds			
9) S ortho-Terphenyl (SURR)	11.562	2461324	19.249 ug/ml
Spiked Amount	50.000	Recovery	= 38.50%
12) S 1-chlorooctadecane (S...	12.993	1848678	18.364 ug/ml
Spiked Amount	50.000	Recovery	= 36.73%

Target Compounds

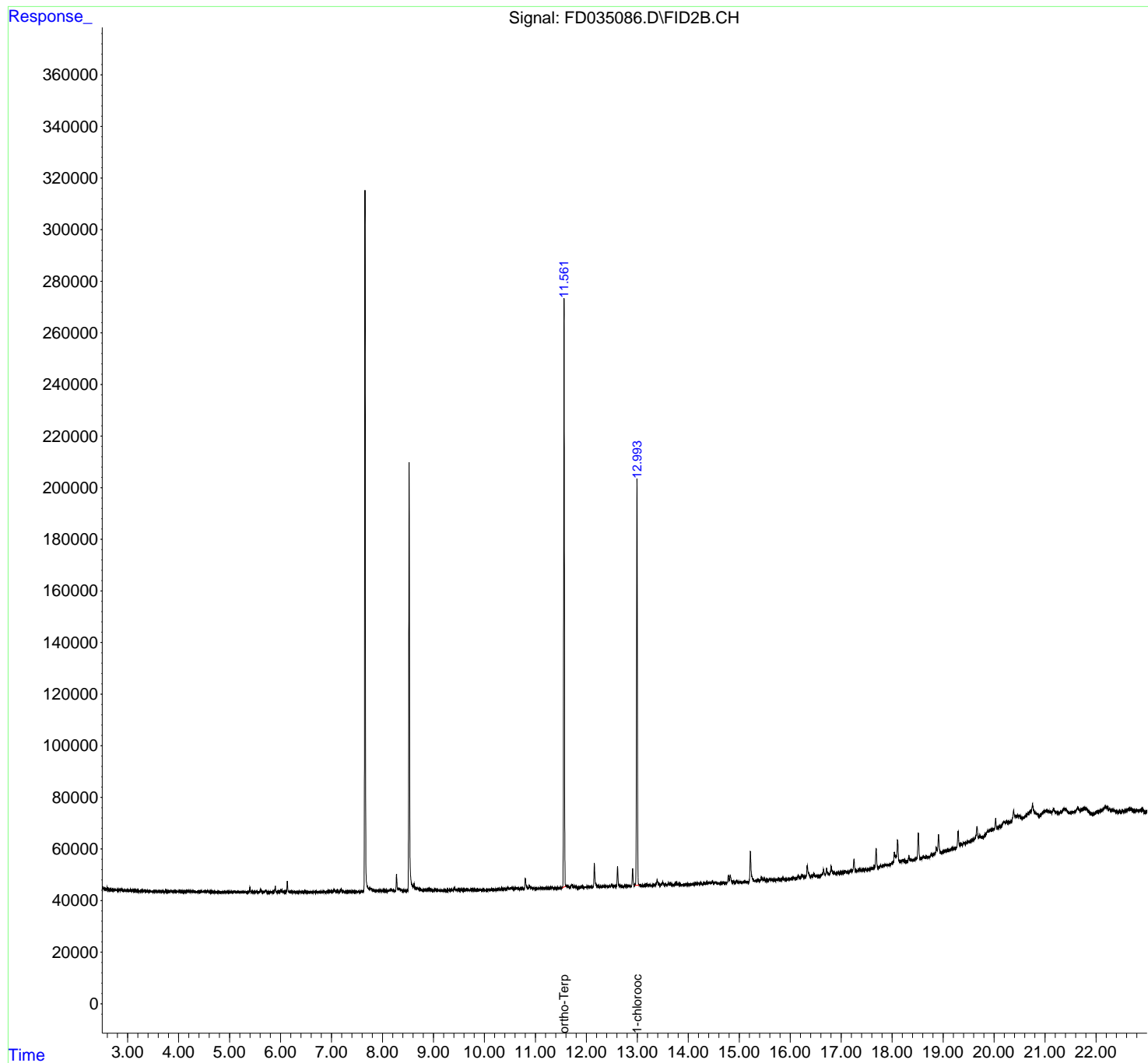
(f)=RT Delta > 1/2 Window

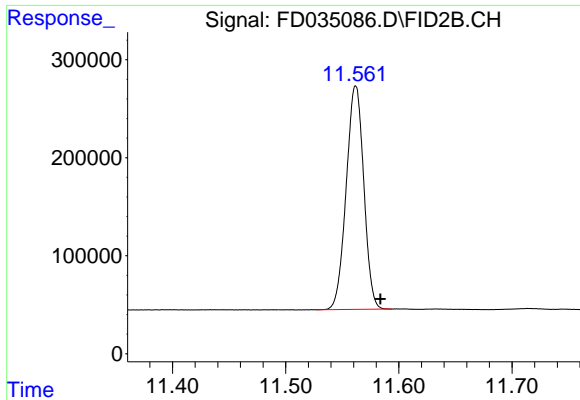
(m)=manual int.

Data Path : Z:\pestpcbsrv\HPCHEM1\FID_D\Data\FD101520AL\
Data File : FD035086.D
Signal(s) : FID2B.CH
Acq On : 16 Oct 2020 3:23
Operator : DD\AJ
Sample : L4392-08DL 2X
Misc :
ALS Vial : 70 Sample Multiplier: 1

Integration File: autoint1.e
Quant Time: Oct 16 04:12:31 2020
Quant Method : Z:\pestpcbsrv\HPCHEM1\FID_D\methods\Alaphatic EPH 100120.M
Quant Title : GC Extractables
QLast Update : Fri Oct 02 09:52:32 2020
Response via : Initial Calibration
Integrator: ChemStation 6890 Scale Mode: Large solvent peaks clipped

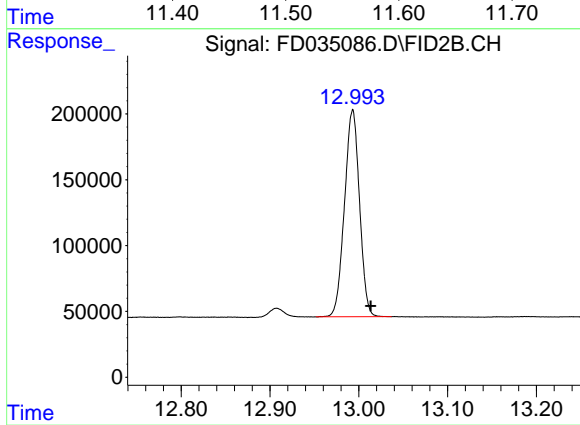
Volume Inj. : 1 ul
Signal Phase : Rxi-1ms
Signal Info : 20M x 0.18mm x 0.18um





#9 ortho-Terphenyl (SURR)

R.T.: 11.562 min
Delta R.T.: -0.022 min
Response: 2461324
Conc: 19.25 ug/ml



#12 1-chlorooctadecane (SURR)

R.T.: 12.993 min
Delta R.T.: -0.020 min
Response: 1848678
Conc: 18.36 ug/ml