

Data Path : Z:\pestpcbsrv\HPCHEM1\FID_D\Data\FD101719AL\
 Data File : FD031089.D
 Signal(s) : FID2B.CH
 Acq On : 18 Oct 2019 4:10
 Operator : DD\AJ
 Sample : K5400-04DL 10X
 Misc :
 ALS Vial : 78 Sample Multiplier: 1

Instrument :
 FID_D
 ClientSampleId :

Integration File: autoint1.e
 Quant Time: Oct 18 06:37:22 2019
 Quant Method : Z:\pestpcbsrv\HPCHEM1\FID_D\methods\Alaphatic EPH 101419.M
 Quant Title : GC Extractables
 QLast Update : Tue Oct 15 07:46:23 2019
 Response via : Initial Calibration
 Integrator: ChemStation 6890 Scale Mode: Large solvent peaks clipped

Volume Inj. : 1 ul
 Signal Phase : Rxi-1ms
 Signal Info : 20M x 0.18mm x 0.18um

| Compound | R.T. | Response | Conc Units |
|--------------------------------|--------|------------|--------------|
| ----- | | | |
| System Monitoring Compounds | | | |
| 9) S ortho-Terphenyl (SURR) | 11.438 | 530420 | 4.229 ug/ml |
| Spiked Amount | 50.000 | Recovery = | 8.46% |
| 12) S 1-chlorooctadecane (S... | 12.868 | 592170 | 6.325 ug/ml |
| Spiked Amount | 50.000 | Recovery = | 12.65% |
| Target Compounds | | | |
| 3) T A~Naphthalene (C11.7) | 5.898 | 123171 | 1.075 ug/ml |
| 10) T n-Eicosane (C20) | 12.484 | 1377458 | 12.597 ug/ml |
| 13) T n-Docosane (C22) | 13.639 | 255800 | 2.339 ug/ml |
| 14) T n-Tetracosane (C24) | 14.688 | 1281676 | 11.736 ug/ml |
| 16) T n-Octacosane (C28) | 16.674 | 604914 | 5.635 ug/ml |
| 17) T n-Tricontane (C30) | 17.558 | 159556 | 1.498 ug/ml |
| 18) T n-Dotriacontane (C32) | 18.421 | 127610 | 1.240 ug/ml |
| 20) T n-Hexatriacontane (C36) | 19.862 | 214693 | 2.331 ug/ml |
| 22) T n-Tetracontane (C40) | 21.413 | 382055 | 4.300 ug/ml |
| ----- | | | |

(f)=RT Delta > 1/2 Window

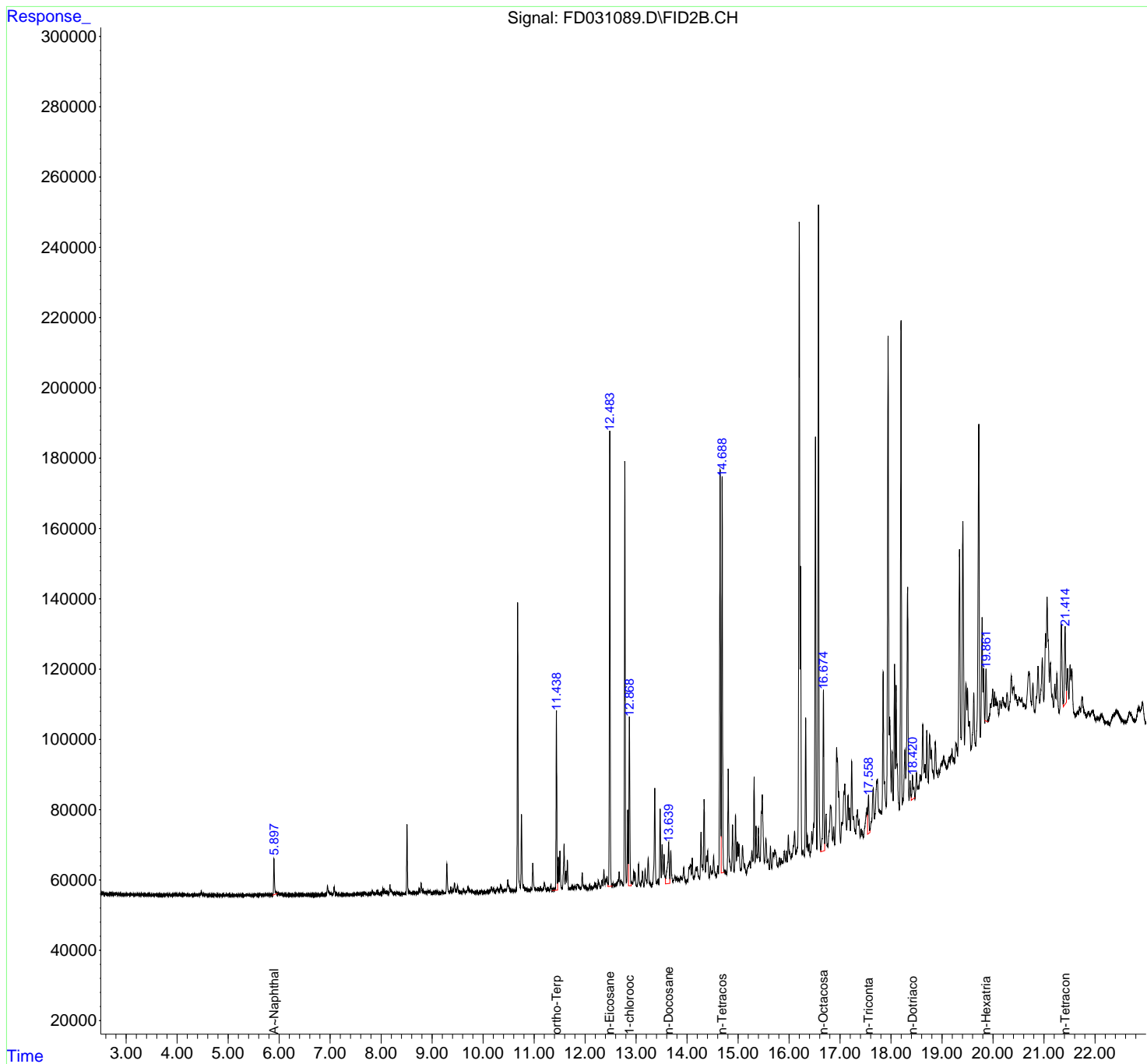
(m)=manual int.

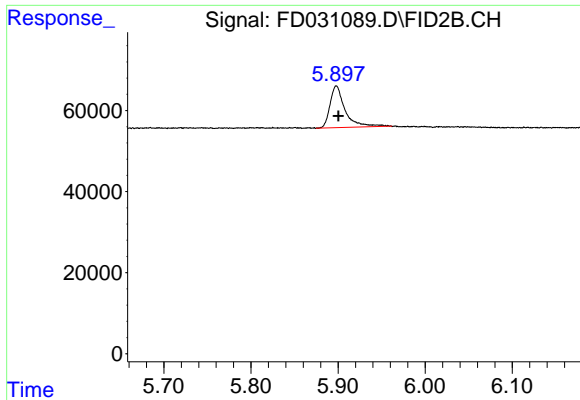
Data Path : Z:\pestpcbsrv\HPCHEM1\FID_D\Data\FD101719AL\
 Data File : FD031089.D
 Signal(s) : FID2B.CH
 Acq On : 18 Oct 2019 4:10
 Operator : DD\AJ
 Sample : K5400-04DL 10X
 Misc :
 ALS Vial : 78 Sample Multiplier: 1

Instrument :
 FID_D
 ClientSampled :

Integration File: autoint1.e
 Quant Time: Oct 18 06:37:22 2019
 Quant Method : Z:\pestpcbsrv\HPCHEM1\FID_D\methods\Alaphatic EPH 101419.M
 Quant Title : GC Extractables
 QLast Update : Tue Oct 15 07:46:23 2019
 Response via : Initial Calibration
 Integrator: ChemStation 6890 Scale Mode: Large solvent peaks clipped

Volume Inj. : 1 ul
 Signal Phase : Rxi-1ms
 Signal Info : 20M x 0.18mm x 0.18um

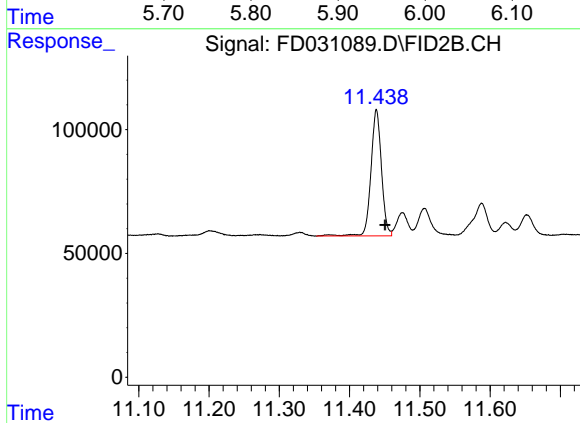




#3 A~Naphthalene (C11.7)

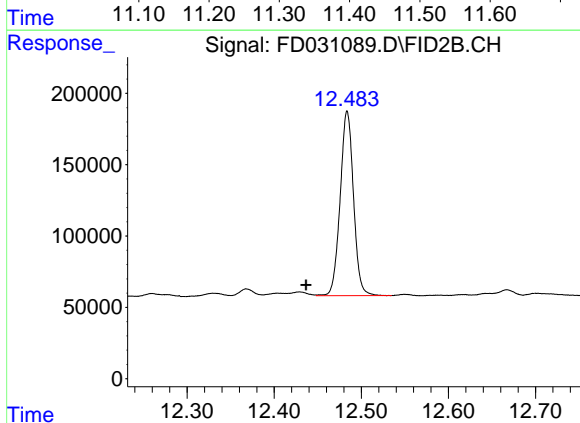
R.T.: 5.898 min
Delta R.T.: -0.002 min
Response: 123171
Conc: 1.07 ug/ml

Instrument :
FID_D
ClientSampleId :



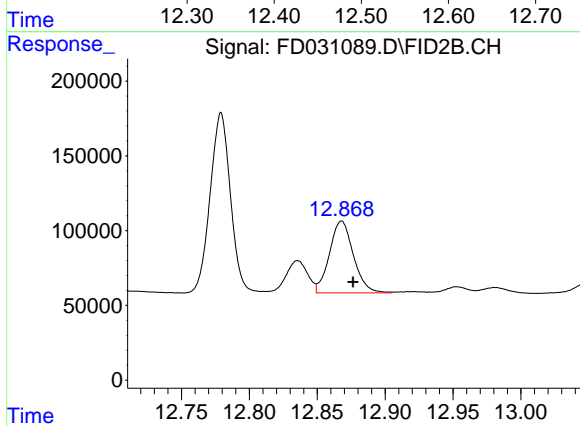
#9 ortho-Terphenyl (SURR)

R.T.: 11.438 min
Delta R.T.: -0.012 min
Response: 530420
Conc: 4.23 ug/ml



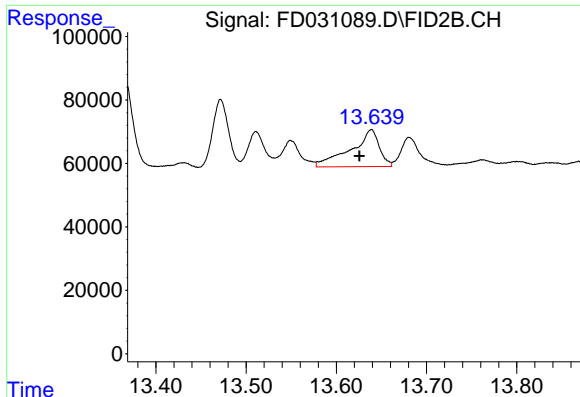
#10 n-Eicosane (C20)

R.T.: 12.484 min
Delta R.T.: 0.047 min
Response: 1377458
Conc: 12.60 ug/ml



#12 1-chlorooctadecane (SURR)

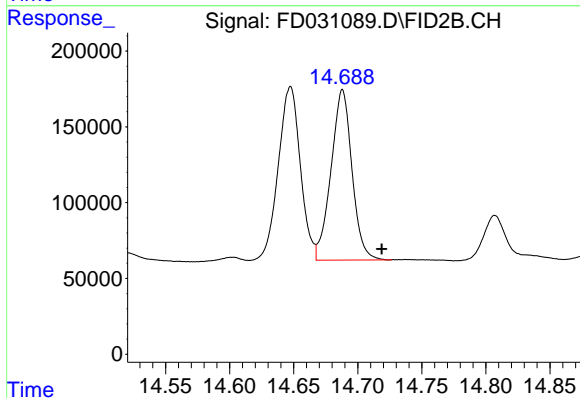
R.T.: 12.868 min
Delta R.T.: -0.008 min
Response: 592170
Conc: 6.32 ug/ml



#13 n-Docosane (C22)

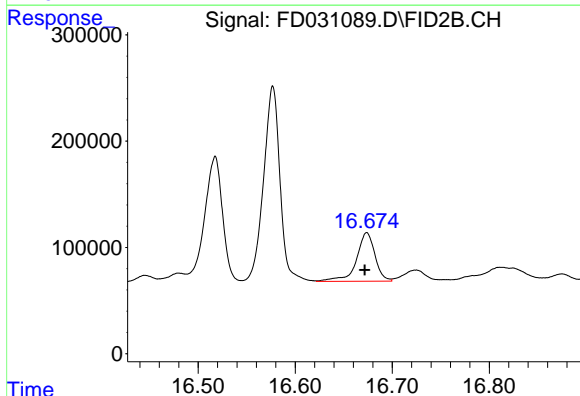
R.T.: 13.639 min
 Delta R.T.: 0.013 min
 Response: 255800
 Conc: 2.34 ug/ml

Instrument :
 FID_D
 ClientSampled :



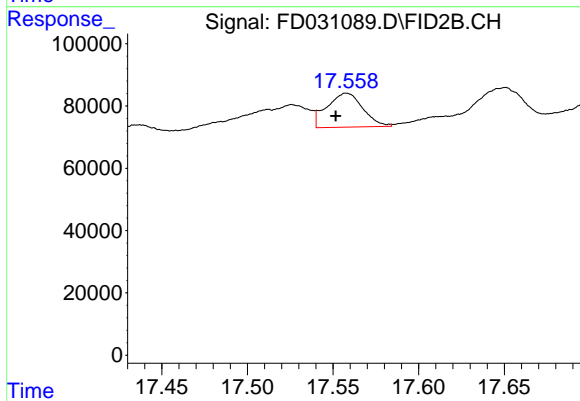
#14 n-Tetracosane (C24)

R.T.: 14.688 min
 Delta R.T.: -0.031 min
 Response: 1281676
 Conc: 11.74 ug/ml



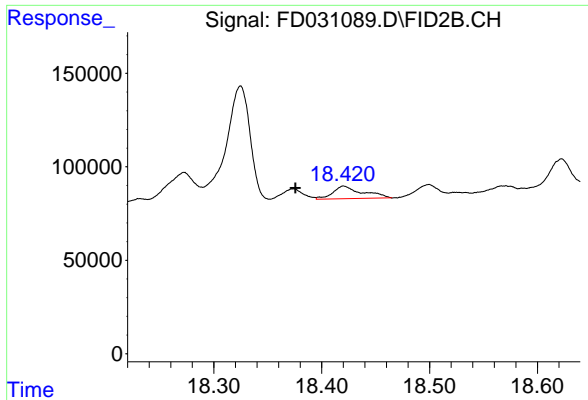
#16 n-Octacosane (C28)

R.T.: 16.674 min
 Delta R.T.: 0.002 min
 Response: 604914
 Conc: 5.63 ug/ml



#17 n-Tricontane (C30)

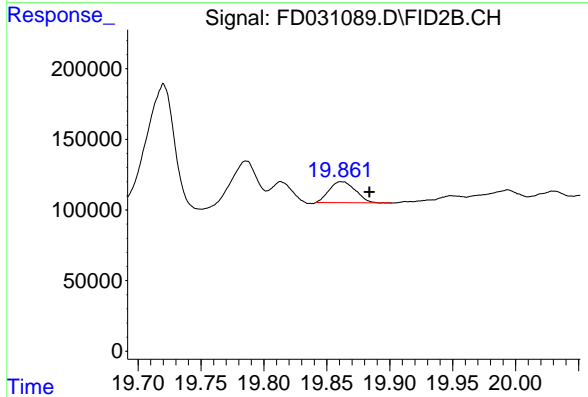
R.T.: 17.558 min
 Delta R.T.: 0.006 min
 Response: 159556
 Conc: 1.50 ug/ml



#18 n-Dotriacontane (C32)

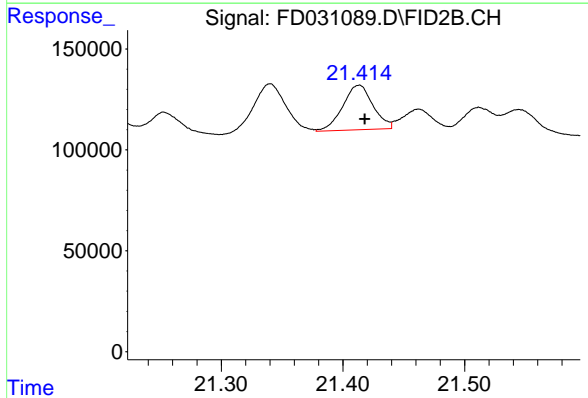
R.T.: 18.421 min
 Delta R.T.: 0.045 min
 Response: 127610
 Conc: 1.24 ug/ml

Instrument :
 FID_D
 ClientSampled :



#20 n-Hexatriacontane (C36)

R.T.: 19.862 min
 Delta R.T.: -0.022 min
 Response: 214693
 Conc: 2.33 ug/ml



#22 n-Tetracontane (C40)

R.T.: 21.413 min
 Delta R.T.: -0.005 min
 Response: 382055
 Conc: 4.30 ug/ml