

Data Path : Z:\pestpcbsrv\HPCHEM1\FID_D\Data\FD101724AR\
 Data File : FD048537.D
 Signal(s) : FID2B.ch
 Acq On : 17 Oct 2024 13:17
 Operator : YP/AJ
 Sample : I.BLK
 Misc :
 ALS Vial : 51 Sample Multiplier: 1

Instrument :
 FID_D
 ClientSampleId :

Integration File: autoint1.e
 Quant Time: Oct 18 02:56:47 2024
 Quant Method : Z:\pestpcbsrv\HPCHEM1\FID_D\methods\Aromatic EPH 093024.M
 Quant Title : GC Extractables
 QLast Update : Mon Sep 30 14:17:34 2024
 Response via : Initial Calibration
 Integrator: ChemStation

Volume Inj. : 1 µl
 Signal Phase : Rxi-1ms
 Signal Info : 20M x 0.18mm x 0.18µm

| Compound | R.T. | Response | Conc Units |
|-----------------------------|------|----------|------------|
| ----- | | | |
| System Monitoring Compounds | | | |
| Target Compounds | | | |
| ----- | | | |

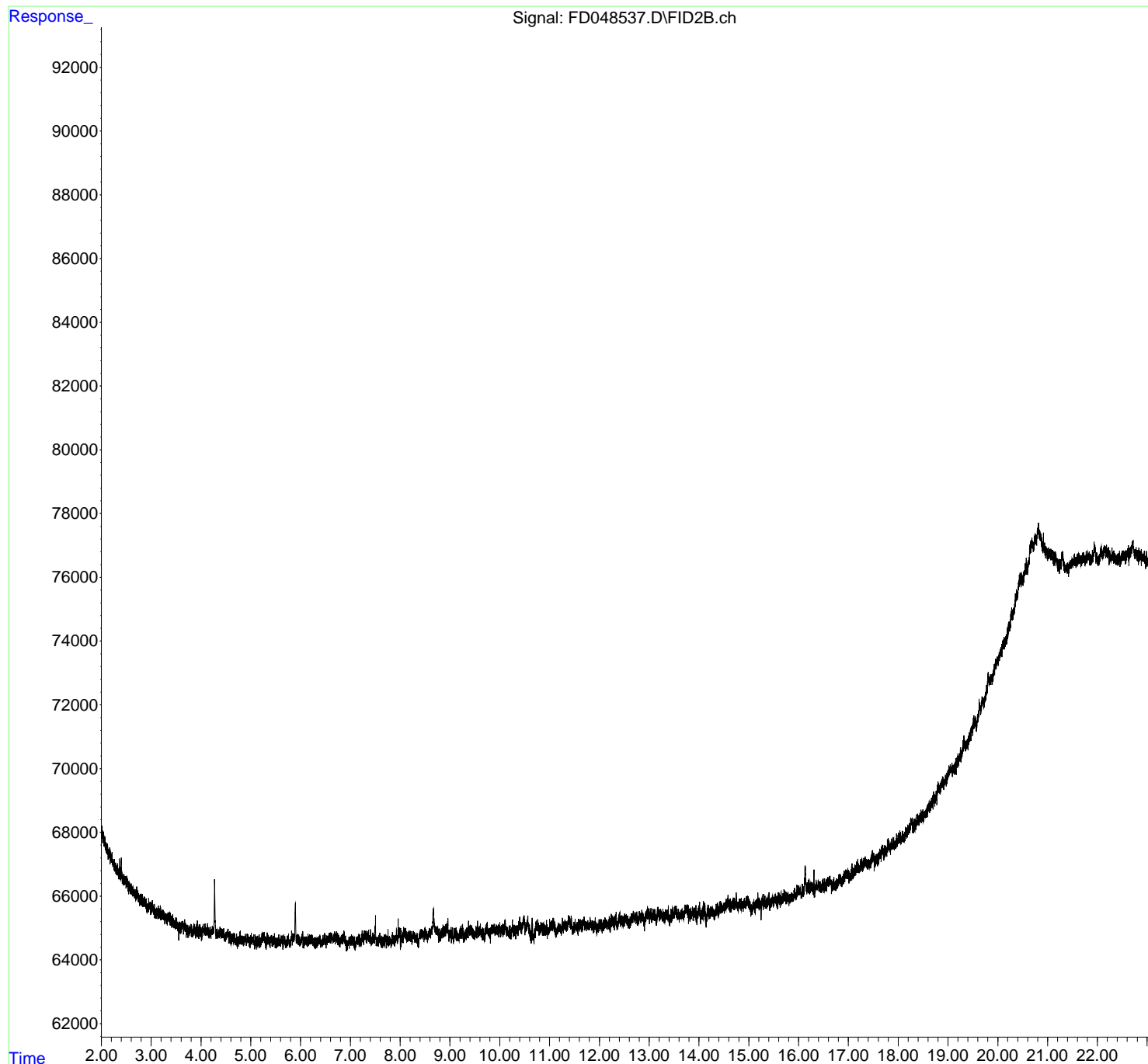
(f)=RT Delta > 1/2 Window (m)=manual int.

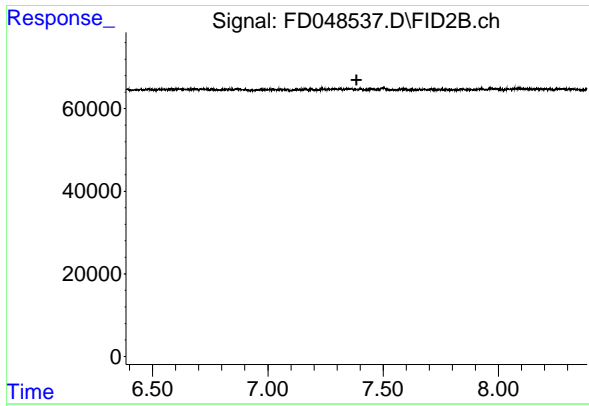
Data Path : Z:\pestpcbsrv\HPCHEM1\FID_D\Data\FD101724AR\
Data File : FD048537.D
Signal(s) : FID2B.ch
Acq On : 17 Oct 2024 13:17
Operator : YP/AJ
Sample : I.BLK
Misc :
ALS Vial : 51 Sample Multiplier: 1

Instrument :
FID_D
ClientSampleId :

Integration File: autoint1.e
Quant Time: Oct 18 02:56:47 2024
Quant Method : Z:\pestpcbsrv\HPCHEM1\FID_D\methods\Aromatic EPH 093024.M
Quant Title : GC Extractables
QLast Update : Mon Sep 30 14:17:34 2024
Response via : Initial Calibration
Integrator: ChemStation

Volume Inj. : 1 μ l
Signal Phase : Rxi-1ms
Signal Info : 20M x 0.18mm x 0.18 μ m

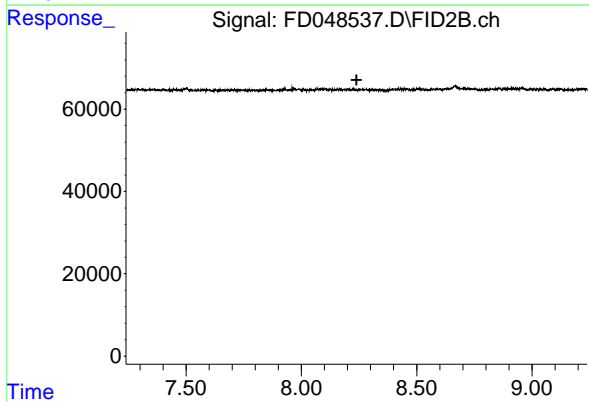




#4 2-Bromonaphthalene (SURR)

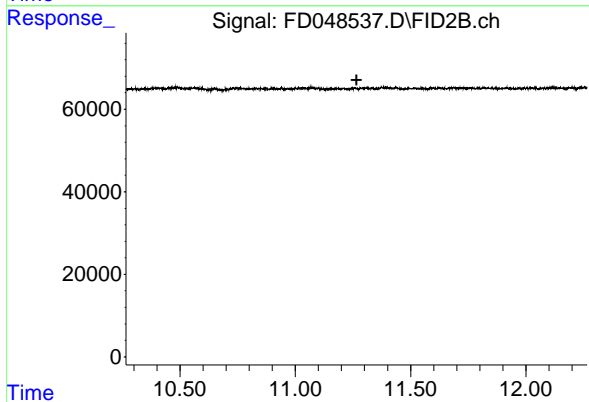
R.T.: 0.000 min
Exp R.T. : 7.384 min
Response: 0
Conc: N.D.

Instrument :
FID_D
ClientSampleId :



#6 2-Fluorobiphenyl (SURR)

R.T.: 0.000 min
Exp R.T. : 8.239 min
Response: 0
Conc: N.D.



#11 ortho-Terphenyl (SURR)

R.T.: 0.000 min
Exp R.T. : 11.266 min
Response: 0
Conc: N.D.