

Data Path : Z:\pestpcbsrv\HPCHEM1\FID_D\Data\FD101819AL\
 Data File : FD031111.D
 Signal(s) : FID2B.CH
 Acq On : 18 Oct 2019 21:35
 Operator : DD\AJ
 Sample : K5420-08
 Misc :
 ALS Vial : 65 Sample Multiplier: 1

Integration File: autoint1.e
 Quant Time: Oct 19 00:45:00 2019
 Quant Method : Z:\pestpcbsrv\HPCHEM1\FID_D\methods\Alaphatic EPH 101419.M
 Quant Title : GC Extractables
 QLast Update : Tue Oct 15 07:46:23 2019
 Response via : Initial Calibration
 Integrator: ChemStation 6890 Scale Mode: Large solvent peaks clipped

Volume Inj. : 1 ul
 Signal Phase : Rxi-1ms
 Signal Info : 20M x 0.18mm x 0.18um

Compound	R.T.	Response	Conc Units

System Monitoring Compounds			
9) S ortho-Terphenyl (SURR)	11.437	3310832	26.399 ug/ml
Spiked Amount	50.000	Recovery	= 52.80%
12) S 1-chlorooctadecane (S...	12.866	2605492	27.828 ug/ml
Spiked Amount	50.000	Recovery	= 55.66%
Target Compounds			
6) T n-Tetradecane (C14)	8.167f	242264	2.253 ug/ml
10) T n-Eicosane (C20)	12.487f	89187	0.816 ug/ml
15) T n-Hexacosane (C26)	15.717	86524	0.800 ug/ml
16) T n-Octacosane (C28)	16.659	192240	1.791 ug/ml
17) T n-Tricontane (C30)	17.538	229361	2.153 ug/ml
18) T n-Dotriacontane (C32)	18.361	362102	3.517 ug/ml
19) T n-Tetratriacontane (C34)	19.117	170066	1.731 ug/ml

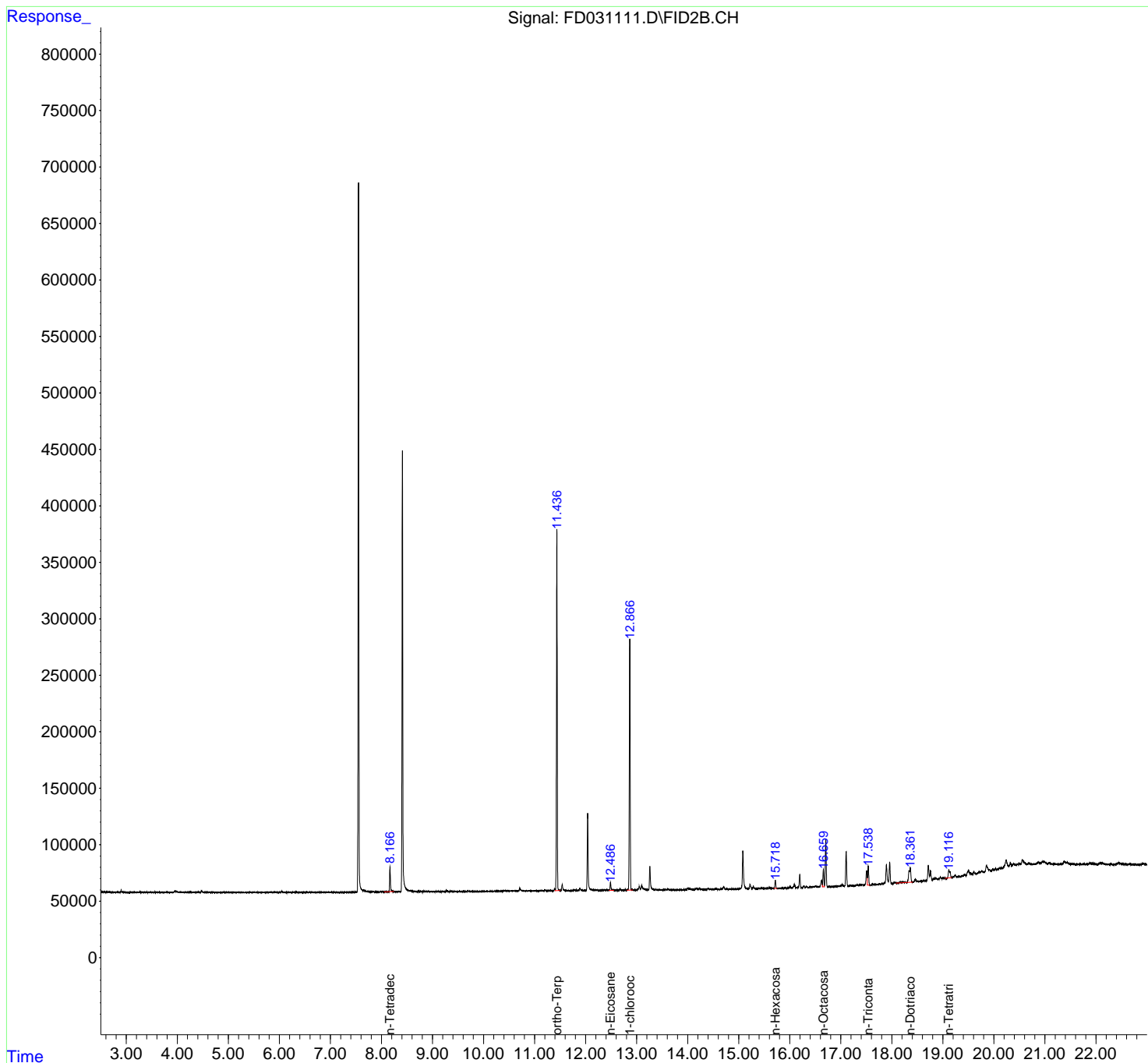
(f)=RT Delta > 1/2 Window

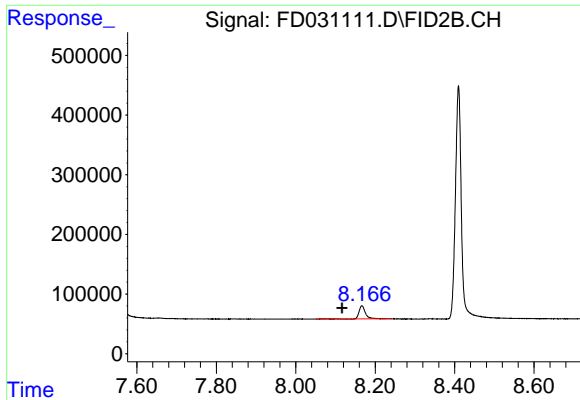
(m)=manual int.

Data Path : Z:\pestpcbsrv\HPCHEM1\FID_D\Data\FD101819AL\
Data File : FD031111.D
Signal(s) : FID2B.CH
Acq On : 18 Oct 2019 21:35
Operator : DD\AJ
Sample : K5420-08
Misc :
ALS Vial : 65 Sample Multiplier: 1

Integration File: autoint1.e
Quant Time: Oct 19 00:45:00 2019
Quant Method : Z:\pestpcbsrv\HPCHEM1\FID_D\methods\Alaphatic EPH 101419.M
Quant Title : GC Extractables
QLast Update : Tue Oct 15 07:46:23 2019
Response via : Initial Calibration
Integrator: ChemStation 6890 Scale Mode: Large solvent peaks clipped

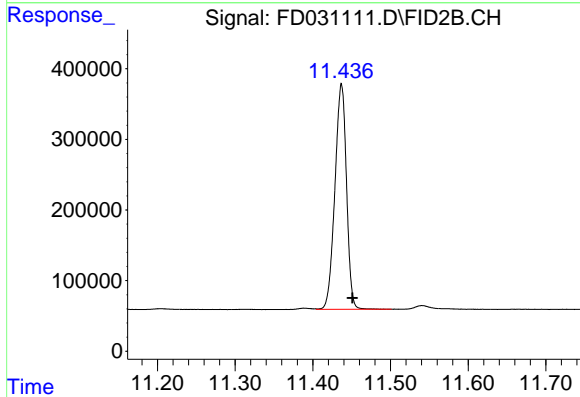
Volume Inj. : 1 ul
Signal Phase : Rxi-1ms
Signal Info : 20M x 0.18mm x 0.18um





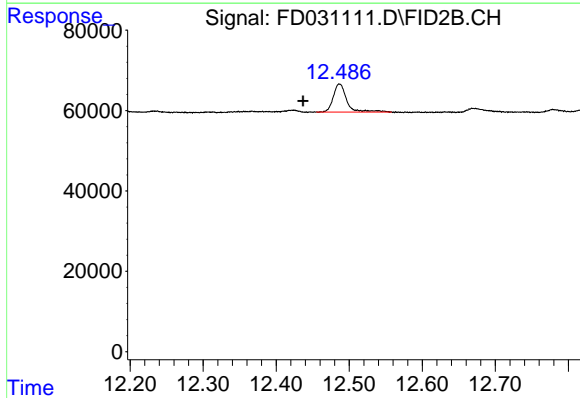
#6 n-Tetradecane (C14)

R.T.: 8.167 min
 Delta R.T.: 0.050 min
 Response: 242264
 Conc: 2.25 ug/ml



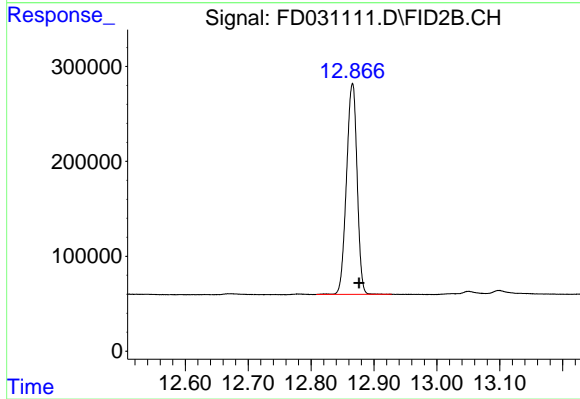
#9 ortho-Terphenyl (SURR)

R.T.: 11.437 min
 Delta R.T.: -0.014 min
 Response: 3310832
 Conc: 26.40 ug/ml



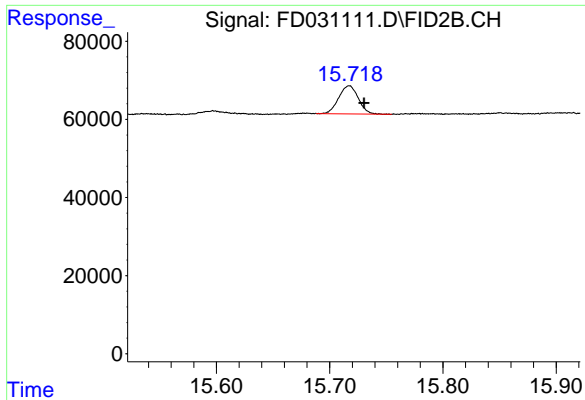
#10 n-Eicosane (C20)

R.T.: 12.487 min
 Delta R.T.: 0.050 min
 Response: 89187
 Conc: 0.82 ug/ml



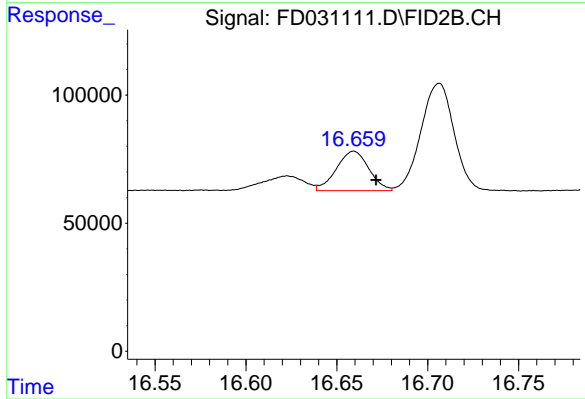
#12 1-chlorooctadecane (SURR)

R.T.: 12.866 min
 Delta R.T.: -0.011 min
 Response: 2605492
 Conc: 27.83 ug/ml



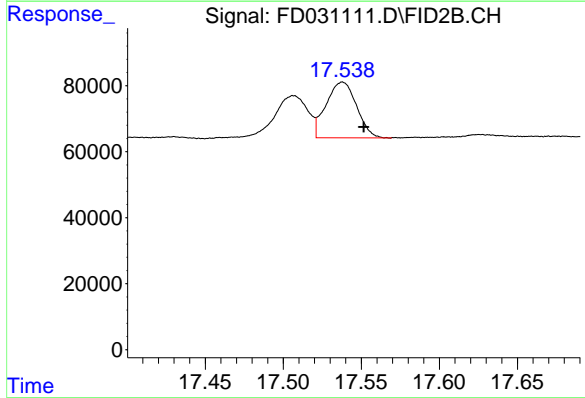
#15 n-Hexacosane (C26)

R.T.: 15.717 min
Delta R.T.: -0.013 min
Response: 86524
Conc: 0.80 ug/ml



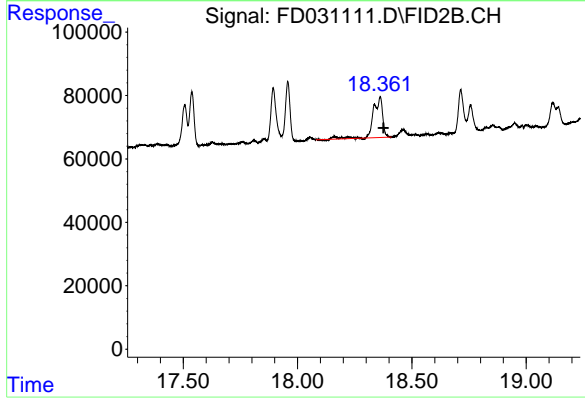
#16 n-Octacosane (C28)

R.T.: 16.659 min
Delta R.T.: -0.012 min
Response: 192240
Conc: 1.79 ug/ml



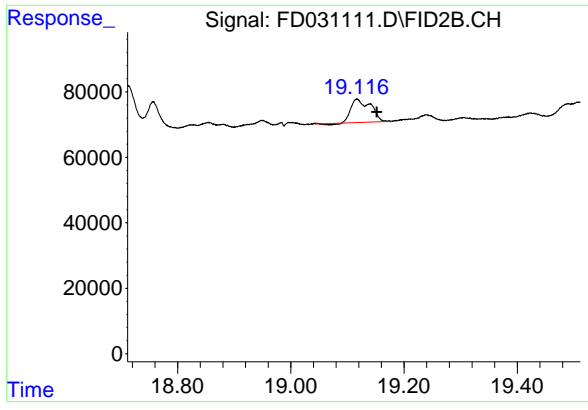
#17 n-Tricontane (C30)

R.T.: 17.538 min
Delta R.T.: -0.014 min
Response: 229361
Conc: 2.15 ug/ml



#18 n-Dotriacontane (C32)

R.T.: 18.361 min
Delta R.T.: -0.014 min
Response: 362102
Conc: 3.52 ug/ml



#19 n-Tetratriacontane (C34)

R.T.: 19.117 min
Delta R.T.: -0.035 min
Response: 170066
Conc: 1.73 ug/ml