

Data Path : Z:\pestpcbsrv\HPCHEM1\FID_D\Data\FD102023AR\
 Data File : FD046768.D
 Signal(s) : FID2B.ch
 Acq On : 20 Oct 2023 07:30
 Operator : YP/AJ
 Sample : MECL2
 Misc :
 ALS Vial : 51 Sample Multiplier: 1

Instrument :
 FID_D
 ClientSampleId :

Integration File: autoint1.e
 Quant Time: Oct 21 00:38:16 2023
 Quant Method : Z:\pestpcbsrv\HPCHEM1\FID_D\methods\Aromatic EPH 101023.M
 Quant Title : GC Extractables
 QLast Update : Wed Oct 11 02:49:06 2023
 Response via : Initial Calibration
 Integrator: ChemStation

Volume Inj. : 1 µl
 Signal Phase : Rxi-1ms
 Signal Info : 20M x 0.18mm x 0.18µm

Compound	R.T.	Response	Conc Units

System Monitoring Compounds			
Target Compounds			
14) T Benzo[a]anthracene (C...	14.619	341577	2.332 ug/ml
15) T Chrysene (C27.41)	14.619	341577	2.123 ug/ml
17) T Bnezo[k]fluoranthene ...	16.206f	70136	0.466 ug/ml
18) T Benzo[a]pyrene (C31.34)	16.516	49881	0.353 ug/ml
19) T Indeno[1,2,3-cd]pyren...	17.779f	39327	0.290 ug/ml

(f)=RT Delta > 1/2 Window

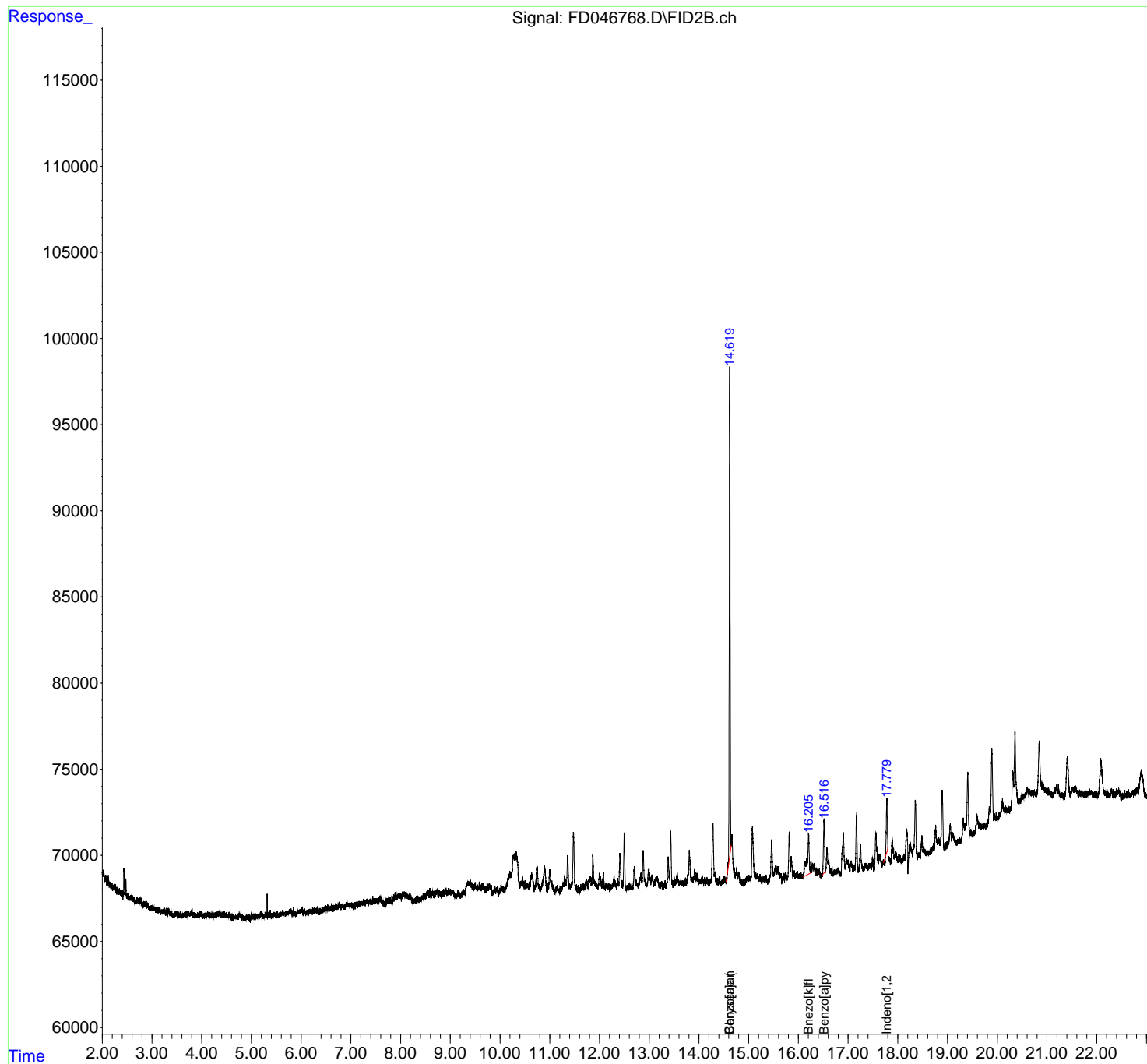
(m)=manual int.

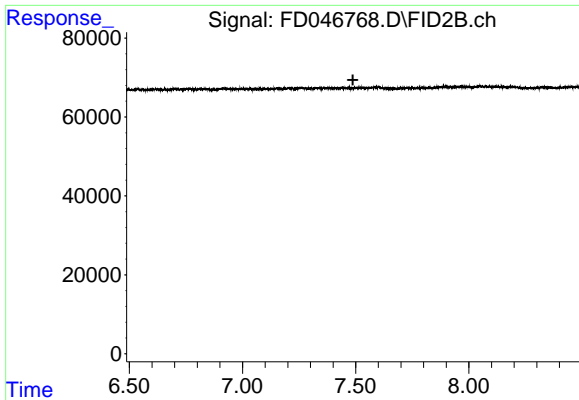
Data Path : Z:\pestpcbsrv\HPCHEM1\FID_D\Data\FD102023AR\
Data File : FD046768.D
Signal(s) : FID2B.ch
Acq On : 20 Oct 2023 07:30
Operator : YP/AJ
Sample : MECL2
Misc :
ALS Vial : 51 Sample Multiplier: 1

Instrument :
FID_D
ClientSampleId :

Integration File: autoint1.e
Quant Time: Oct 21 00:38:16 2023
Quant Method : Z:\pestpcbsrv\HPCHEM1\FID_D\methods\Aromatic EPH 101023.M
Quant Title : GC Extractables
QLast Update : Wed Oct 11 02:49:06 2023
Response via : Initial Calibration
Integrator: ChemStation

Volume Inj. : 1 μ l
Signal Phase : Rxi-1ms
Signal Info : 20M x 0.18mm x 0.18 μ m

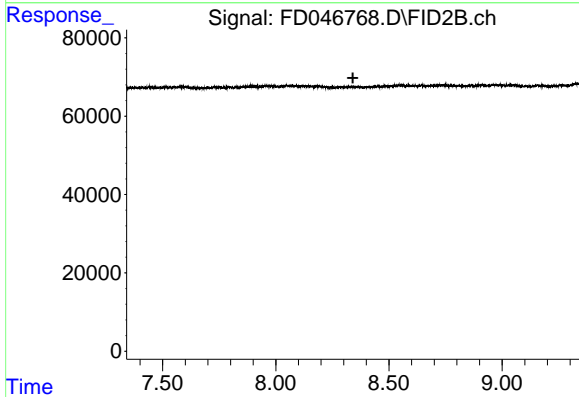




#4 2-Bromonaphthalene (SURRE)

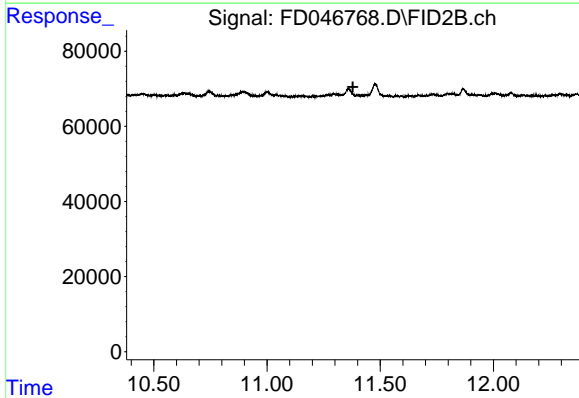
R.T.: 0.000 min
 Exp R.T. : 7.488 min
 Response: 0
 Conc: N.D.

Instrument :
 FID_D
 ClientSampleId :



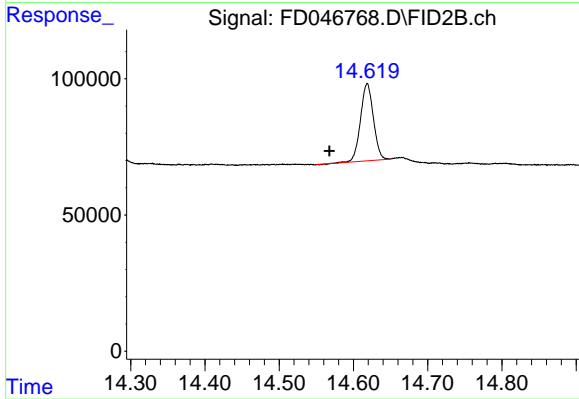
#6 2-Fluorobiphenyl (SURRE)

R.T.: 0.000 min
 Exp R.T. : 8.341 min
 Response: 0
 Conc: N.D.



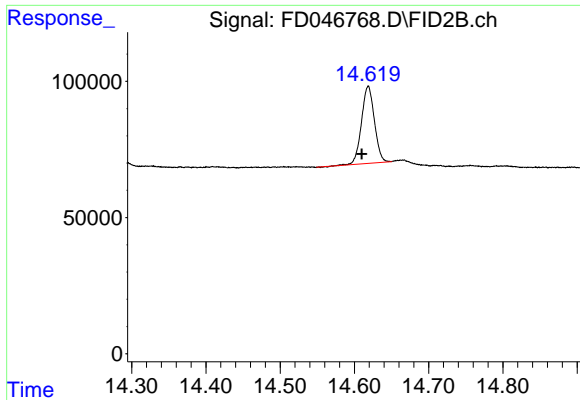
#11 ortho-Terphenyl (SURRE)

R.T.: 0.000 min
 Exp R.T. : 11.379 min
 Response: 0
 Conc: N.D.



#14 Benzo[a]anthracene (C26.37)

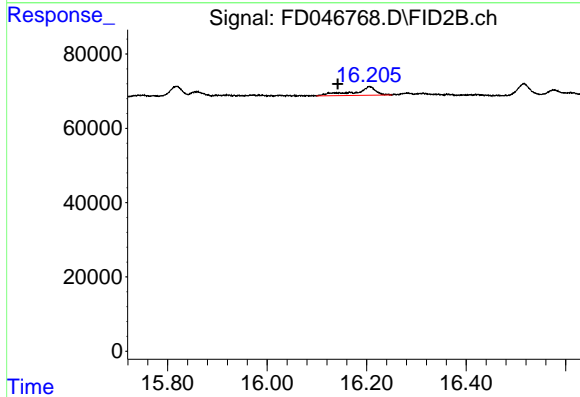
R.T.: 14.619 min
 Delta R.T.: 0.051 min
 Response: 341577
 Conc: 2.33 ug/ml



#15 Chrysene (C27.41)

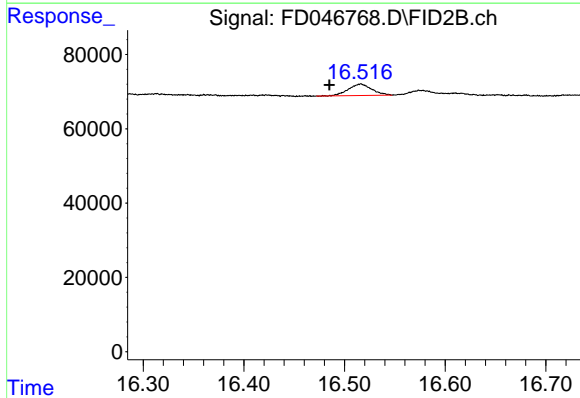
R.T.: 14.619 min
 Delta R.T.: 0.008 min
 Response: 341577
 Conc: 2.12 ug/ml

Instrument :
 FID_D
 ClientSampleId :



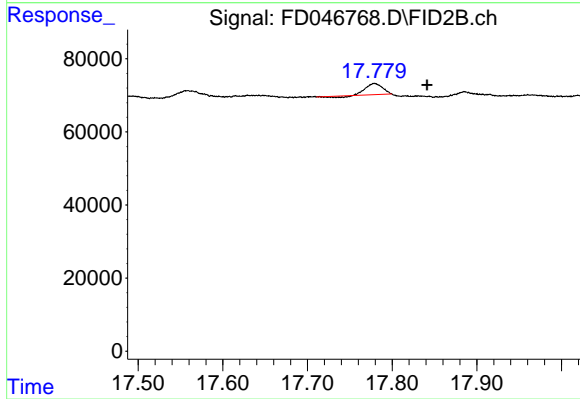
#17 Bnezo[k]fluoranthene (C30.14)

R.T.: 16.206 min
 Delta R.T.: 0.064 min
 Response: 70136
 Conc: 0.47 ug/ml



#18 Benzo[a]pyrene (C31.34)

R.T.: 16.516 min
 Delta R.T.: 0.031 min
 Response: 49881
 Conc: 0.35 ug/ml



#19 Indeno[1,2,3-cd]pyrene (C35.01)

R.T.: 17.779 min
 Delta R.T.: -0.062 min
 Response: 39327
 Conc: 0.29 ug/ml