

Data Path : Z:\pestpcbsrv\HPCHEM1\FID_D\Data\FD102119AL\
 Data File : FD031147.D
 Signal(s) : FID2B.CH
 Acq On : 22 Oct 2019 00:49
 Operator : DD\AJ
 Sample : K5447-01D
 Misc :
 ALS Vial : 69 Sample Multiplier: 1

Instrument :
 FID_D
 ClientSampleId :

Integration File: autoint1.e
 Quant Time: Oct 22 01:59:39 2019
 Quant Method : Z:\pestpcbsrv\HPCHEM1\FID_D\methods\Alaphatic EPH 101419.M
 Quant Title : GC Extractables
 QLast Update : Tue Oct 15 07:46:23 2019
 Response via : Initial Calibration
 Integrator: ChemStation 6890 Scale Mode: Large solvent peaks clipped

Volume Inj. : 1 ul
 Signal Phase : Rxi-1ms
 Signal Info : 20M x 0.18mm x 0.18um

Compound	R.T.	Response	Conc Units

System Monitoring Compounds			
9) S ortho-Terphenyl (SURR)	11.437	5627613	44.871 ug/ml
Spiked Amount	50.000	Recovery	= 89.74%
12) S 1-chlorooctadecane (S...	12.867	4468858	47.730 ug/ml
Spiked Amount	50.000	Recovery	= 95.46%
Target Compounds			
6) T n-Tetradecane (C14)	8.161	365106	3.395 ug/ml
17) T n-Tricontane (C30)	17.541	213636	2.006 ug/ml
18) T n-Dotriacontane (C32)	18.363	157865	1.534 ug/ml

(f)=RT Delta > 1/2 Window

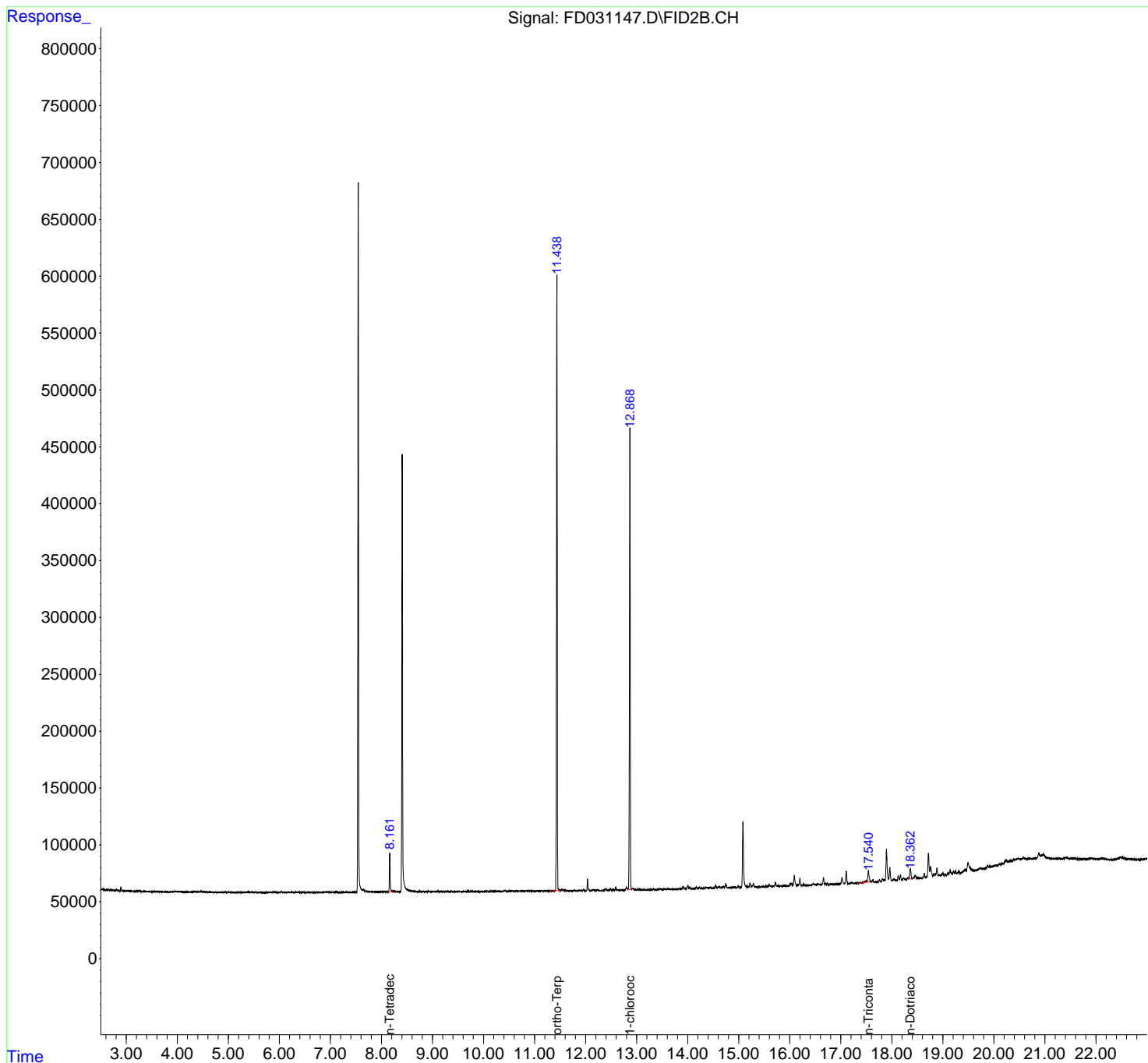
(m)=manual int.

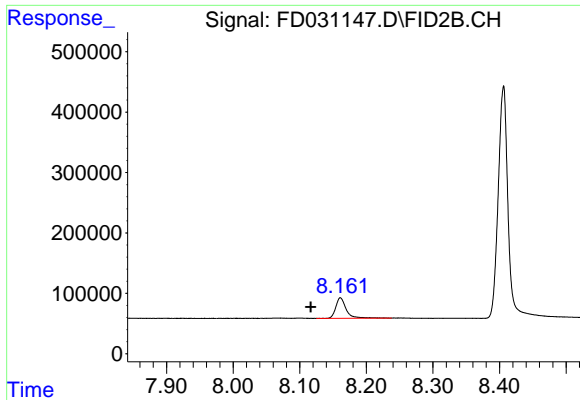
Data Path : Z:\pestpcbsrv\HPCHEM1\FID_D\Data\FD102119AL\
 Data File : FD031147.D
 Signal(s) : FID2B.CH
 Acq On : 22 Oct 2019 00:49
 Operator : DD\AJ
 Sample : K5447-01D
 Misc :
 ALS Vial : 69 Sample Multiplier: 1

Instrument :
 FID_D
 ClientSampleId :

Integration File: autoint1.e
 Quant Time: Oct 22 01:59:39 2019
 Quant Method : Z:\pestpcbsrv\HPCHEM1\FID_D\methods\Alaphatic EPH 101419.M
 Quant Title : GC Extractables
 QLast Update : Tue Oct 15 07:46:23 2019
 Response via : Initial Calibration
 Integrator: ChemStation 6890 Scale Mode: Large solvent peaks clipped

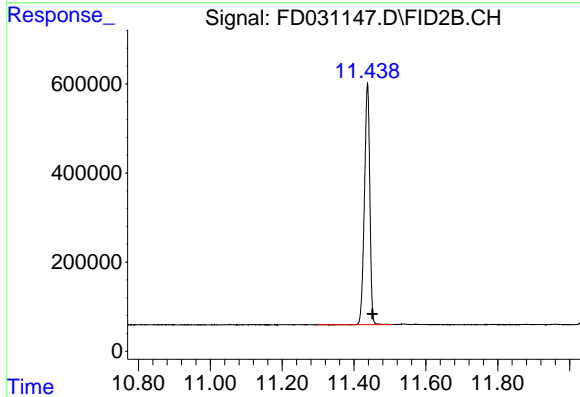
Volume Inj. : 1 ul
 Signal Phase : Rxi-1ms
 Signal Info : 20M x 0.18mm x 0.18um



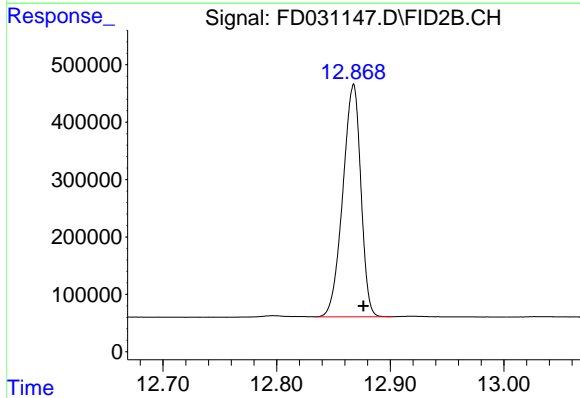


#6 n-Tetradecane (C14)
 R.T.: 8.161 min
 Delta R.T.: 0.045 min
 Response: 365106
 Conc: 3.39 ug/ml

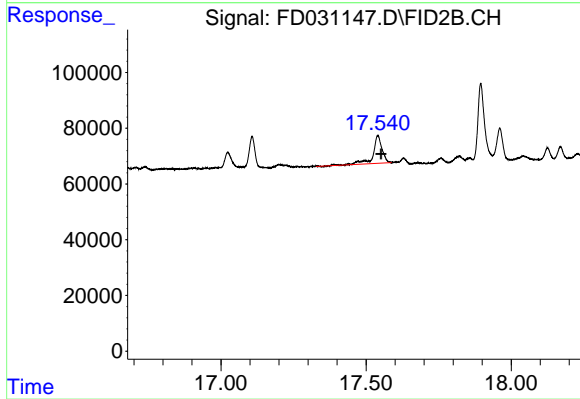
Instrument :
 FID_D
 ClientSampled :



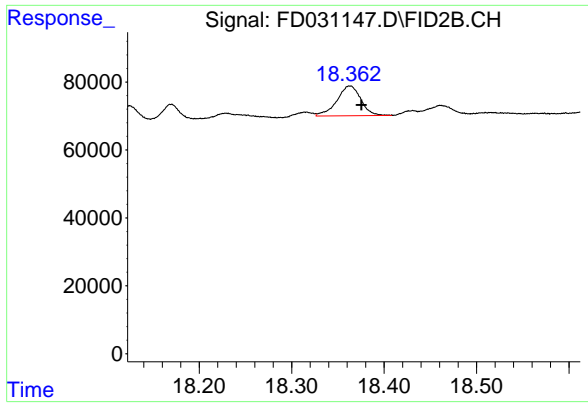
#9 ortho-Terphenyl (SURR)
 R.T.: 11.437 min
 Delta R.T.: -0.013 min
 Response: 5627613
 Conc: 44.87 ug/ml



#12 1-chlorooctadecane (SURR)
 R.T.: 12.867 min
 Delta R.T.: -0.009 min
 Response: 4468858
 Conc: 47.73 ug/ml



#17 n-Tricontane (C30)
 R.T.: 17.541 min
 Delta R.T.: -0.011 min
 Response: 213636
 Conc: 2.01 ug/ml



#18 n-Dotriacontane (C32)

R.T.: 18.363 min
Delta R.T.: -0.013 min
Response: 157865
Conc: 1.53 ug/ml

Instrument :
FID_D
ClientSampleId :