

Data Path : Z:\pestpcbsrv\HPCHEM1\FID_D\Data\FD102119AR\
 Data File : FD031172.D
 Signal(s) : FID2B.CH
 Acq On : 22 Oct 2019 15:43
 Operator : DD\AJ
 Sample : 20 PPM AROMATIC HC STD
 Misc :
 ALS Vial : 75 Sample Multiplier: 1

Integration File: autoint1.e
 Quant Time: Oct 22 16:36:58 2019
 Quant Method : Z:\pestpcbsrv\HPCHEM1\FID_D\methods\Aromatic EPH 101419.M
 Quant Title : GC Extractables
 QLast Update : Tue Oct 15 03:44:42 2019
 Response via : Initial Calibration
 Integrator: ChemStation 6890 Scale Mode: Large solvent peaks clipped

Volume Inj. : 1 µl
 Signal Phase : Rxi-1ms
 Signal Info : 20M x 0.18mm x 0.18µm

Compound	R.T.	Response	Conc Units

System Monitoring Compounds			
4) S 2-Bromonaphthalene (S...	7.541	1978829	20.702 ug/ml
Spiked Amount 50.000		Recovery =	41.40%
6) S 2-Fluorobiphenyl (SURR)	8.403	1287890	20.297 ug/ml
Spiked Amount 50.000 Range 0 - 131		Recovery =	40.59%
11) S ortho-Terphenyl (SURR)	11.431	2144392	19.566 ug/ml
Spiked Amount 50.000		Recovery =	39.13%
Target Compounds			
1) T 1,2,3-Trimethylbenzen...	4.350	2133548	21.508 ug/ml
2) T Naphthalene (C11.7)	5.883	2170551	21.438 ug/ml
3) T 2-Methylnaphthalene (...)	6.932	2154254	21.011 ug/ml
5) T Acenaphthylene (C15.06)	8.203	2070391	20.057 ug/ml
7) T Acenaphthene (C15.5)	8.497	2201619	20.169 ug/ml
8) T Flouorene (C16.55)	9.278	2086514	20.128 ug/ml
9) T Phenanthrene (C19.36)	10.670	2076313	19.875 ug/ml
10) T Anthracene (C19.43)	10.746	1906529	18.170 ug/ml
12) T Fluoranthene (C21.85)	12.477	2117630	19.934 ug/ml
13) T Pyrene (C20.8)	12.773	2035634	19.211 ug/ml
14) T Benzo[a]anthracene (C...	14.641	1928018	20.069 ug/ml
15) T Chrysene (C27.41)	14.683	2158901	19.638 ug/ml
16) T benzo[b]fluoranthene ...	16.190	2038311	21.013 ug/mlm
17) T Bnezo[k]fluoranthene ...	16.221	2153464	19.784 ug/ml
18) T Benzo[a]pyrene (C31.34)	16.569	1991284	20.292 ug/ml
19) T Indeno[1,2,3-cd]pyren...	17.935	1926998	21.320 ug/mlm
20) T Dibenz[a,h]anthracene...	17.970	2188026	21.314 ug/ml
21) T Benzo[g,h,i]perylene ...	18.187	2029680	21.293 ug/ml

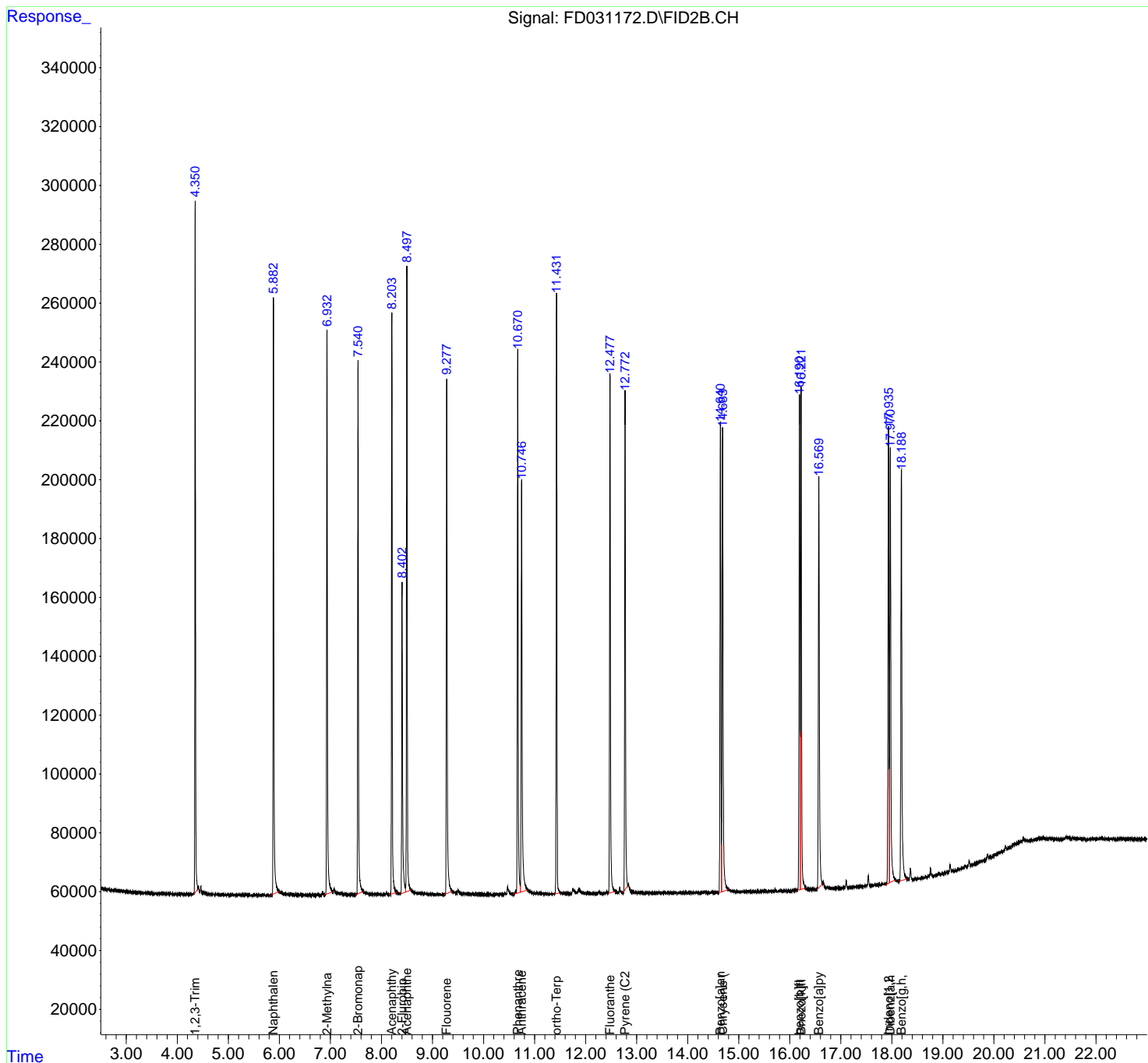
(f)=RT Delta > 1/2 Window

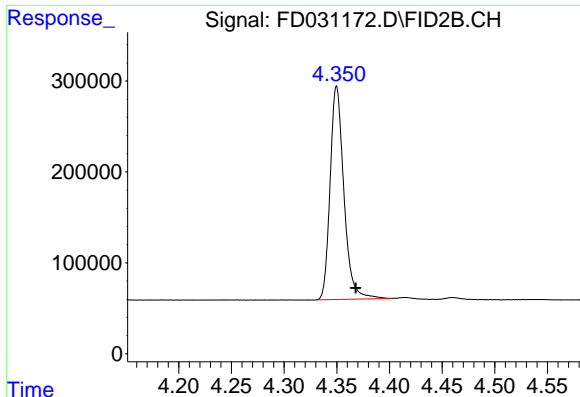
(m)=manual int.

Data Path : Z:\pestpcbsrv\HPCHEM1\FID_D\Data\FD102119AR\
 Data File : FD031172.D
 Signal(s) : FID2B.CH
 Acq On : 22 Oct 2019 15:43
 Operator : DD\AJ
 Sample : 20 PPM AROMATIC HC STD
 Misc :
 ALS Vial : 75 Sample Multiplier: 1

Integration File: autoint1.e
 Quant Time: Oct 22 16:36:58 2019
 Quant Method : Z:\pestpcbsrv\HPCHEM1\FID_D\methods\Aromatic EPH 101419.M
 Quant Title : GC Extractables
 QLast Update : Tue Oct 15 03:44:42 2019
 Response via : Initial Calibration
 Integrator: ChemStation 6890 Scale Mode: Large solvent peaks clipped

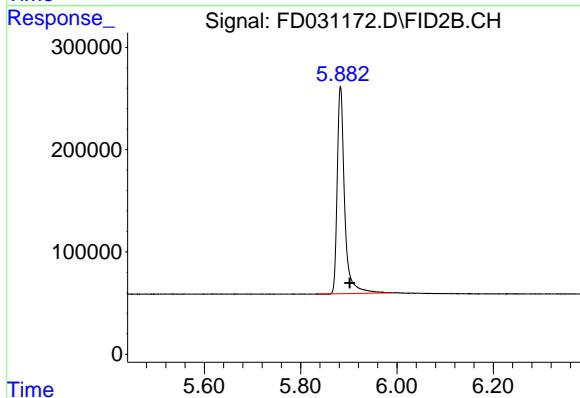
Volume Inj. : 1 µl
 Signal Phase : Rxi-1ms
 Signal Info : 20M x 0.18mm x 0.18µm





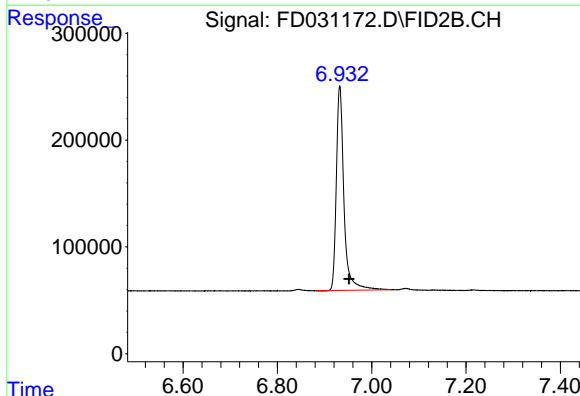
#1 1,2,3-Trimethylbenzene (C10.1)

R.T.: 4.350 min
Delta R.T.: -0.018 min
Response: 2133548
Conc: 21.51 ug/ml



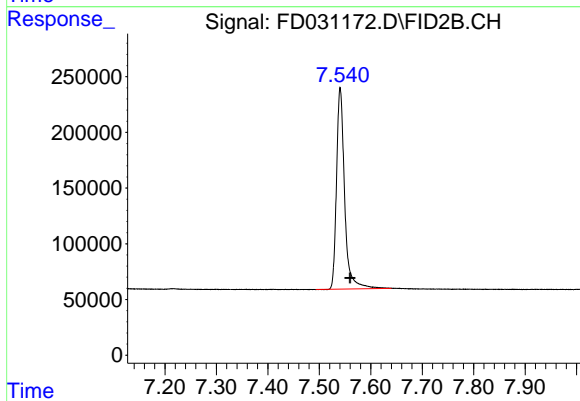
#2 Naphthalene (C11.7)

R.T.: 5.883 min
Delta R.T.: -0.019 min
Response: 2170551
Conc: 21.44 ug/ml



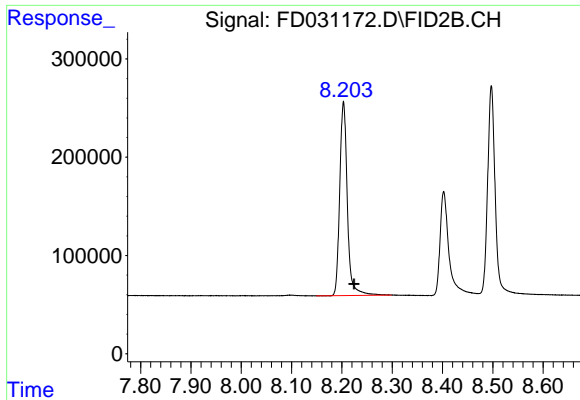
#3 2-Methylnaphthalene (C12.89)

R.T.: 6.932 min
Delta R.T.: -0.019 min
Response: 2154254
Conc: 21.01 ug/ml



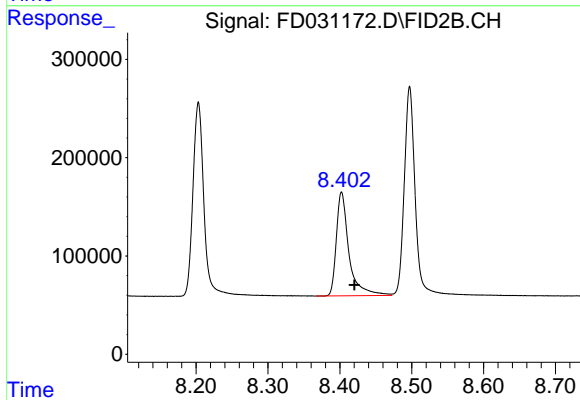
#4 2-Bromonaphthalene (SURR)

R.T.: 7.541 min
Delta R.T.: -0.019 min
Response: 1978829
Conc: 20.70 ug/ml



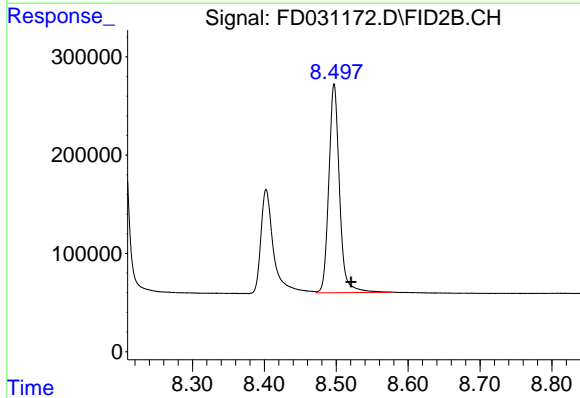
#5 Acenaphthylene (C15.06)

R.T.: 8.203 min
Delta R.T.: -0.021 min
Response: 2070391
Conc: 20.06 ug/ml



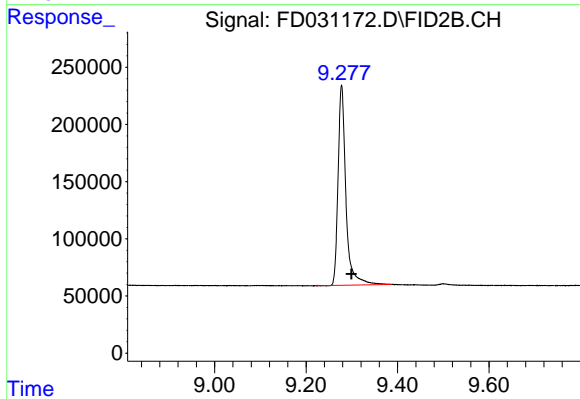
#6 2-Fluorobiphenyl (SURR)

R.T.: 8.403 min
Delta R.T.: -0.018 min
Response: 1287890
Conc: 20.30 ug/ml



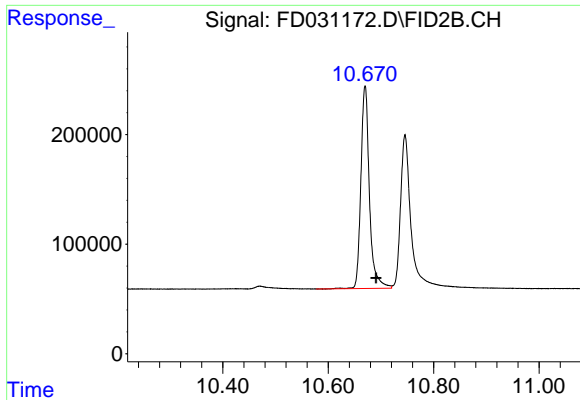
#7 Acenaphthene (C15.5)

R.T.: 8.497 min
Delta R.T.: -0.023 min
Response: 2201619
Conc: 20.17 ug/ml

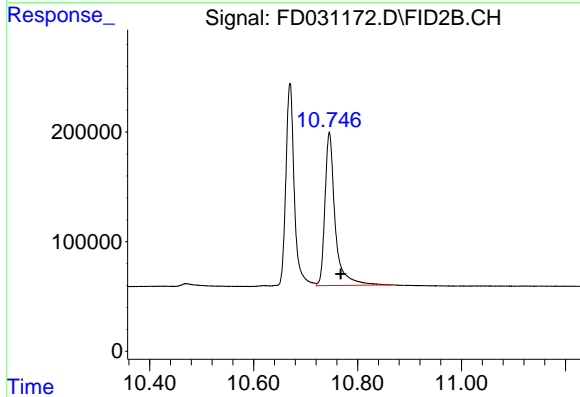


#8 Fluorene (C16.55)

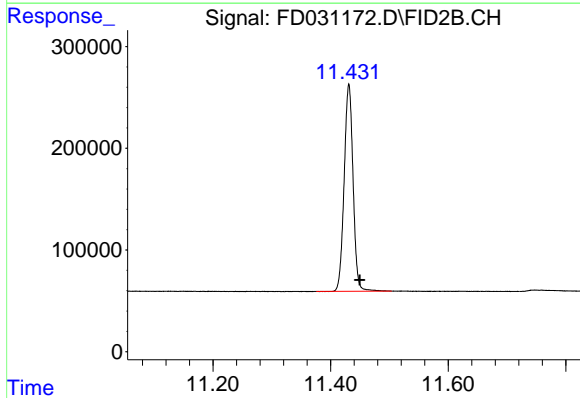
R.T.: 9.278 min
Delta R.T.: -0.021 min
Response: 2086514
Conc: 20.13 ug/ml



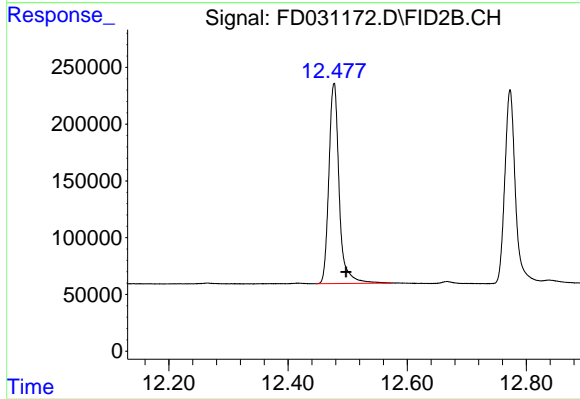
#9 Phenanthrene (C19.36)
R.T.: 10.670 min
Delta R.T.: -0.021 min
Response: 2076313
Conc: 19.88 ug/ml



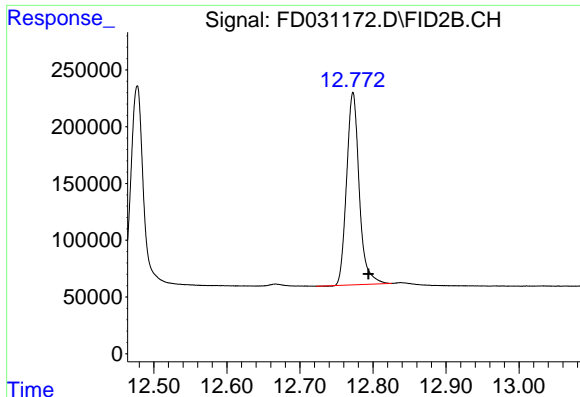
#10 Anthracene (C19.43)
R.T.: 10.746 min
Delta R.T.: -0.022 min
Response: 1906529
Conc: 18.17 ug/ml



#11 ortho-Terphenyl (SURR)
R.T.: 11.431 min
Delta R.T.: -0.018 min
Response: 2144392
Conc: 19.57 ug/ml

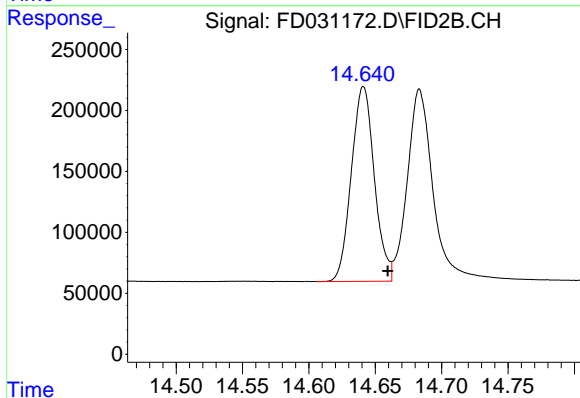


#12 Fluoranthene (C21.85)
R.T.: 12.477 min
Delta R.T.: -0.020 min
Response: 2117630
Conc: 19.93 ug/ml



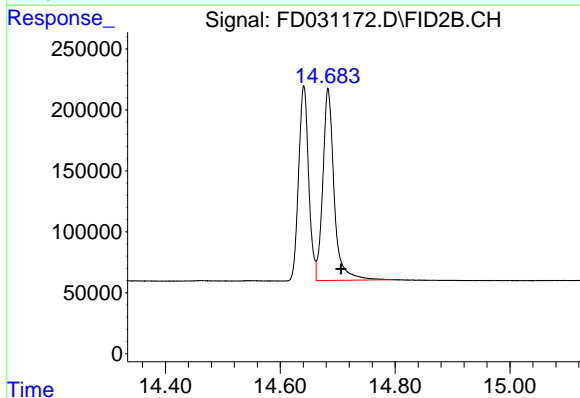
#13 Pyrene (C20.8)

R.T.: 12.773 min
Delta R.T.: -0.021 min
Response: 2035634
Conc: 19.21 ug/ml



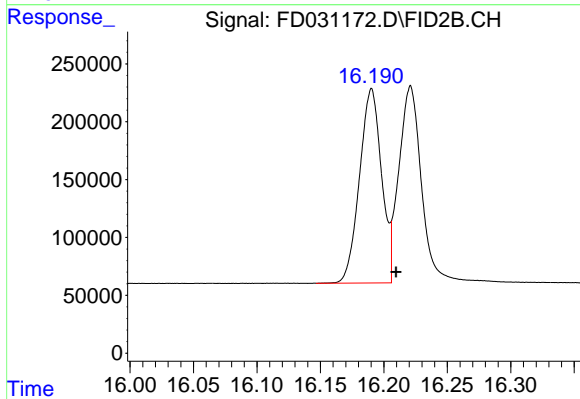
#14 Benzo[a]anthracene (C26.37)

R.T.: 14.641 min
Delta R.T.: -0.018 min
Response: 1928018
Conc: 20.07 ug/ml



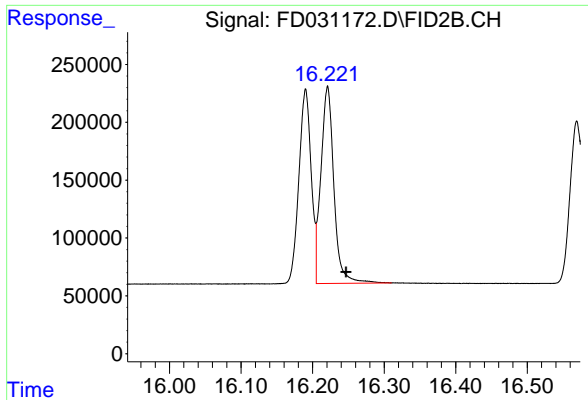
#15 Chrysene (C27.41)

R.T.: 14.683 min
Delta R.T.: -0.023 min
Response: 2158901
Conc: 19.64 ug/ml



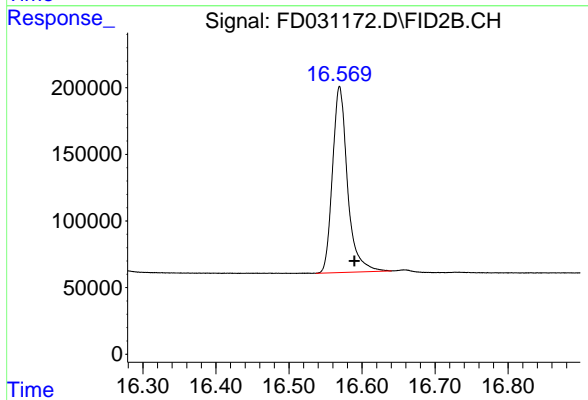
#16 benzo[b]fluoranthene (C30.41)

R.T.: 16.190 min
Delta R.T.: -0.020 min
Response: 2038311
Conc: 21.01 ug/ml m



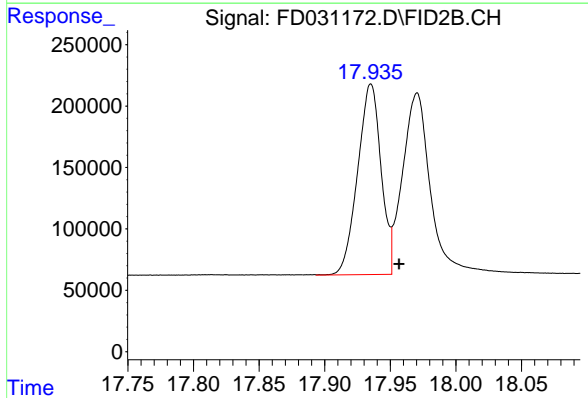
#17 Bnezo[k]fluoranthene (C30.14)

R.T.: 16.221 min
Delta R.T.: -0.026 min
Response: 2153464
Conc: 19.78 ug/ml



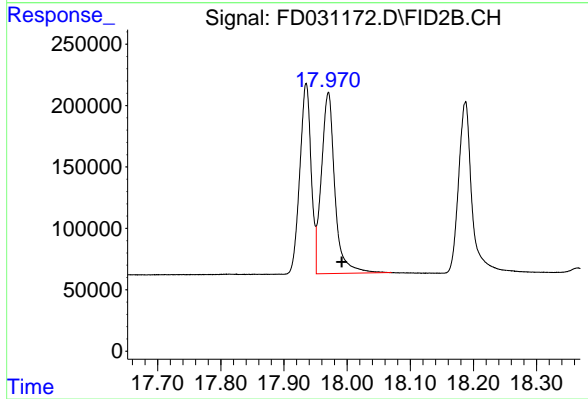
#18 Benzo[a]pyrene (C31.34)

R.T.: 16.569 min
Delta R.T.: -0.020 min
Response: 1991284
Conc: 20.29 ug/ml



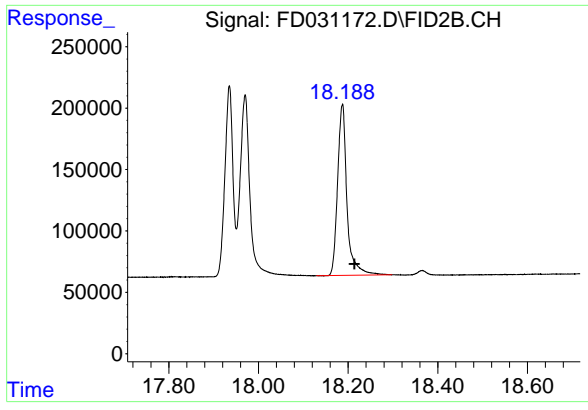
#19 Indeno[1,2,3-cd]pyrene (C35.01)

R.T.: 17.935 min
Delta R.T.: -0.022 min
Response: 1926998
Conc: 21.32 ug/ml m



#20 Dibenz[a,h]anthracene (C30.36)

R.T.: 17.970 min
Delta R.T.: -0.021 min
Response: 2188026
Conc: 21.31 ug/ml



#21 Benzo[g,h,i]perylene (C34.01)

R.T.: 18.187 min
Delta R.T.: -0.027 min
Response: 2029680
Conc: 21.29 ug/ml