

Data Path : Z:\pestpcbsrv\HPCHEM1\FID\_D\Data\FD102219AL\  
 Data File : FD031189.D  
 Signal(s) : FID2B.CH  
 Acq On : 23 Oct 2019 1:52  
 Operator : DD\AJ  
 Sample : K5146-13  
 Misc :  
 ALS Vial : 67 Sample Multiplier: 1

Integration File: autoint1.e  
 Quant Time: Oct 23 02:14:06 2019  
 Quant Method : Z:\pestpcbsrv\HPCHEM1\FID\_D\methods\Alaphatic EPH 101419.M  
 Quant Title : GC Extractables  
 QLast Update : Tue Oct 15 07:46:23 2019  
 Response via : Initial Calibration  
 Integrator: ChemStation 6890 Scale Mode: Large solvent peaks clipped

Volume Inj. : 1 ul  
 Signal Phase : Rxi-1ms  
 Signal Info : 20M x 0.18mm x 0.18um

Compound	R.T.	Response	Conc Units
System Monitoring Compounds			
9) S ortho-Terphenyl (SURR)	11.440	5175710	41.268 ug/ml
Spiked Amount	50.000	Recovery	= 82.54%
12) S 1-chlorooctadecane (S...	12.871	4245039	45.339 ug/ml
Spiked Amount	50.000	Recovery	= 90.68%

Target Compounds

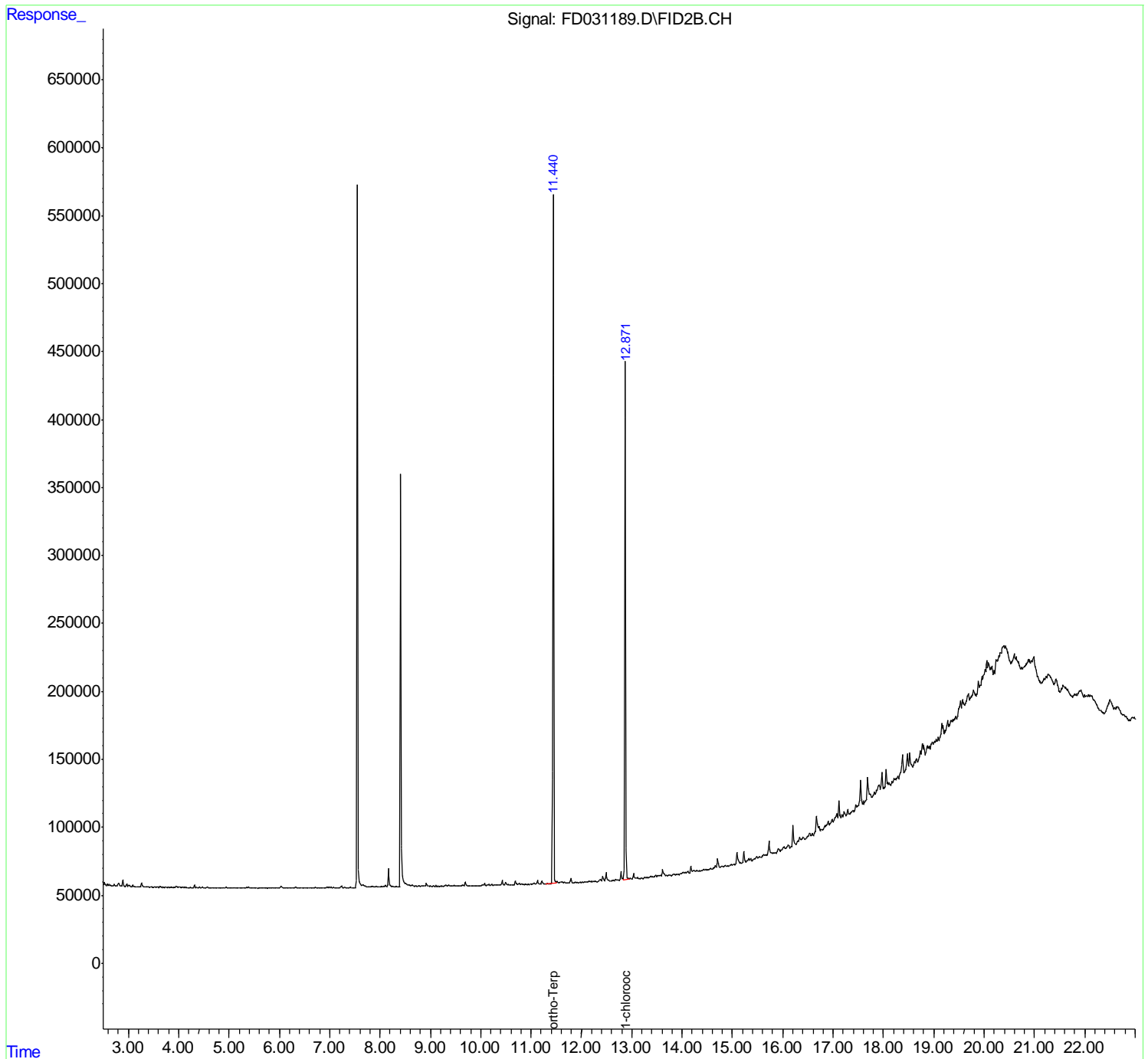
(f)=RT Delta > 1/2 Window

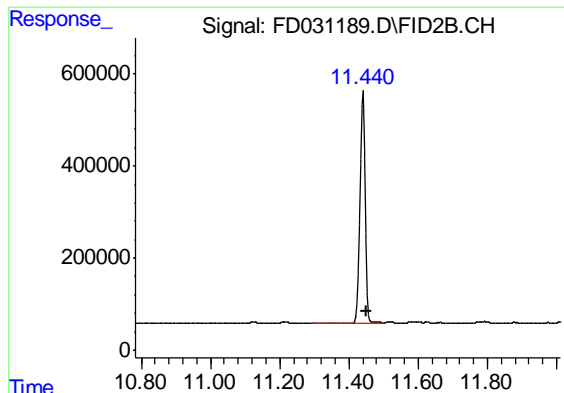
(m)=manual int.

Data Path : Z:\pestpcbsrv\HPCHEM1\FID\_D\Data\FD102219AL\  
Data File : FD031189.D  
Signal(s) : FID2B.CH  
Acq On : 23 Oct 2019 1:52  
Operator : DD\AJ  
Sample : K5146-13  
Misc :  
ALS Vial : 67 Sample Multiplier: 1

Integration File: autoint1.e  
Quant Time: Oct 23 02:14:06 2019  
Quant Method : Z:\pestpcbsrv\HPCHEM1\FID\_D\methods\Alaphatic EPH 101419.M  
Quant Title : GC Extractables  
QLast Update : Tue Oct 15 07:46:23 2019  
Response via : Initial Calibration  
Integrator: ChemStation 6890 Scale Mode: Large solvent peaks clipped

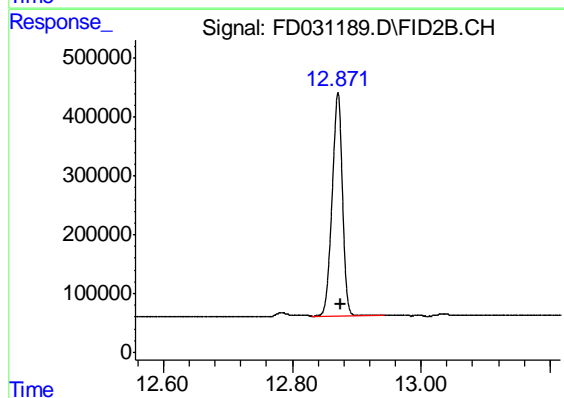
Volume Inj. : 1 ul  
Signal Phase : Rxi-1ms  
Signal Info : 20M x 0.18mm x 0.18um





#9 ortho-Terphenyl (SURR)

R.T.: 11.440 min  
Delta R.T.: -0.011 min  
Response: 5175710  
Conc: 41.27 ug/ml



#12 1-chlorooctadecane (SURR)

R.T.: 12.871 min  
Delta R.T.: -0.006 min  
Response: 4245039  
Conc: 45.34 ug/ml