

Data Path : Z:\pestpcbsrv\HPCHEM1\FID\_D\Data\FD102220AL\  
 Data File : FD035122.D  
 Signal(s) : FID2B.CH  
 Acq On : 22 Oct 2020 23:08  
 Operator : DD\AJ  
 Sample : 20 PPM ALIPHATIC HC STD ICV  
 Misc :  
 ALS Vial : 64 Sample Multiplier: 1

Integration File: autoint1.e  
 Quant Time: Oct 23 03:15:37 2020  
 Quant Method : Z:\pestpcbsrv\HPCHEM1\FID\_D\methods\Alaphatic EPH 102220.M  
 Quant Title : GC Extractables  
 QLast Update : Fri Oct 23 03:14:17 2020  
 Response via : Initial Calibration  
 Integrator: ChemStation 6890 Scale Mode: Large solvent peaks clipped

Volume Inj. : 1 ul  
 Signal Phase : Rxi-1ms  
 Signal Info : 20M x 0.18mm x 0.18um

Compound	R.T.	Response	Conc Units
-----			
System Monitoring Compounds			
9) S ortho-Terphenyl (SURR)	11.551	2672126	20.605 ug/ml
Spiked Amount	50.000	Recovery	= 41.21%
12) S 1-chlorooctadecane (S...	12.983	2145762	20.734 ug/ml
Spiked Amount	50.000	Recovery	= 41.47%
Target Compounds			
1) T n-Nonane (C9)	3.341	2323782	20.627 ug/ml
2) T n-Decane (C10)	4.405	2333335	20.614 ug/ml
3) T A~Naphthalene (C11.7)	5.984	2567415	20.776 ug/ml
4) T n-Dodecane (C12)	6.415	2382520	20.639 ug/ml
5) T A~2-methylnaphthalene...	7.037	2612152	20.798 ug/ml
6) T n-Tetradecane (C14)	8.204	2370313	20.679 ug/ml
7) T n-Hexadecane (C16)	9.799	2374155	20.628 ug/ml
8) T n-Octadecane (C18)	11.236	2492803	20.609 ug/ml
10) T n-Eicosane (C20)	12.540	2533755	20.673 ug/ml
11) T n-Heneicosane (C21)	13.149	2535010	20.699 ug/ml
13) T n-Docosane (C22)	13.733	2537283	20.755 ug/ml
14) T n-Tetracosane (C24)	14.831	2524158	20.816 ug/ml
15) T n-Hexacosane (C26)	15.848	2466982	20.848 ug/ml
16) T n-Octacosane (C28)	16.793	2403435	20.776 ug/ml
17) T n-Tricontane (C30)	17.675	2284391	20.671 ug/ml
18) T n-Dotriacontane (C32)	18.503	2058484	20.492 ug/ml
19) T n-Tetratriacontane (C34)	19.282	1885742	20.512 ug/ml
20) T n-Hexatriacontane (C36)	20.017	1720151	20.523 ug/ml
21) T n-Octatriacontane (C38)	20.739	1616666	20.482 ug/ml
22) T n-Tetracontane (C40)	21.625	1637109	20.132 ug/ml
-----			

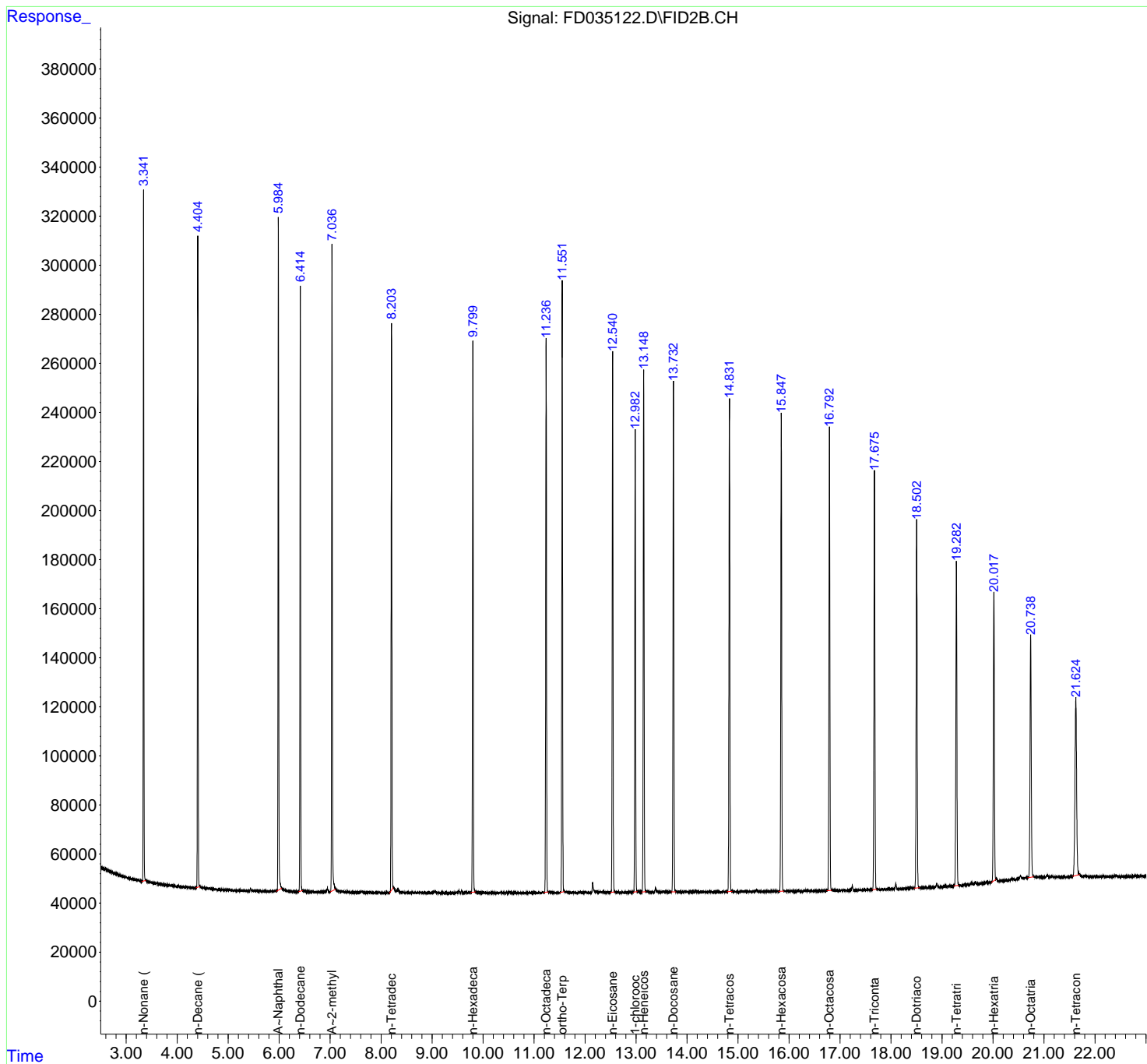
(f)=RT Delta > 1/2 Window

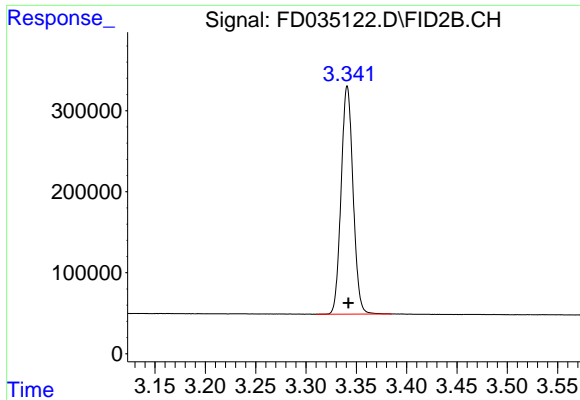
(m)=manual int.

Data Path : Z:\pestpcsrv\HPCHEM1\FID\_D\Data\FD102220AL\  
 Data File : FD035122.D  
 Signal(s) : FID2B.CH  
 Acq On : 22 Oct 2020 23:08  
 Operator : DD\AJ  
 Sample : 20 PPM ALIPHATIC HC STD ICV  
 Misc :  
 ALS Vial : 64 Sample Multiplier: 1

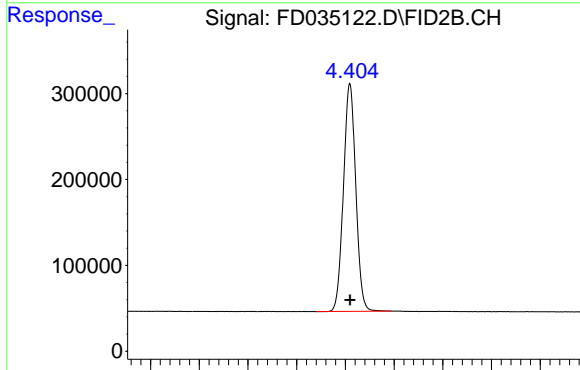
Integration File: autoint1.e  
 Quant Time: Oct 23 03:15:37 2020  
 Quant Method : Z:\pestpcsrv\HPCHEM1\FID\_D\methods\Aliphatic EPH 102220.M  
 Quant Title : GC Extractables  
 QLast Update : Fri Oct 23 03:14:17 2020  
 Response via : Initial Calibration  
 Integrator: ChemStation 6890 Scale Mode: Large solvent peaks clipped

Volume Inj. : 1 ul  
 Signal Phase : Rxi-1ms  
 Signal Info : 20M x 0.18mm x 0.18um

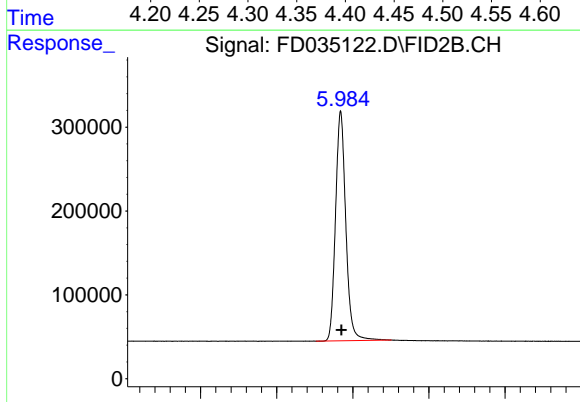




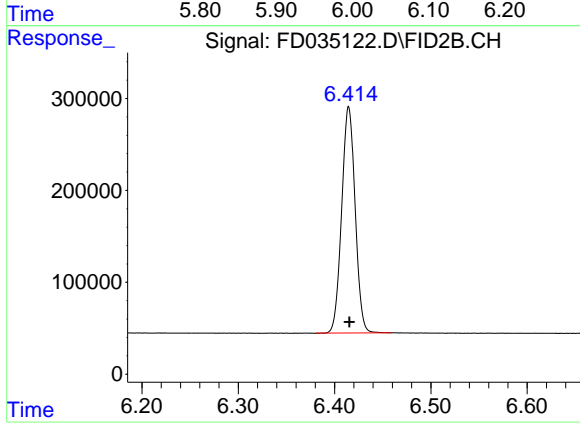
#1 n-Nonane (C9)  
R.T.: 3.341 min  
Delta R.T.: 0.000 min  
Response: 2323782  
Conc: 20.63 ug/ml



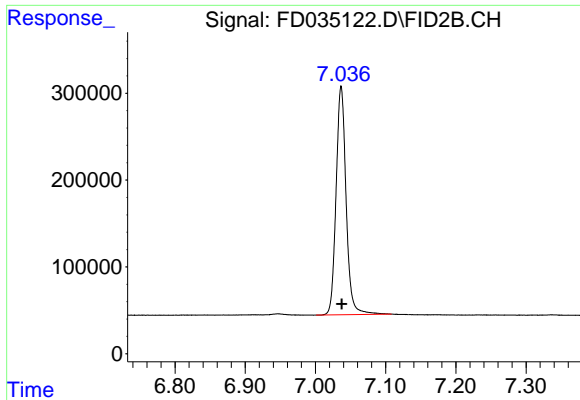
#2 n-Decane (C10)  
R.T.: 4.405 min  
Delta R.T.: 0.000 min  
Response: 2333335  
Conc: 20.61 ug/ml



#3 A~Naphthalene (C11.7)  
R.T.: 5.984 min  
Delta R.T.: 0.000 min  
Response: 2567415  
Conc: 20.78 ug/ml

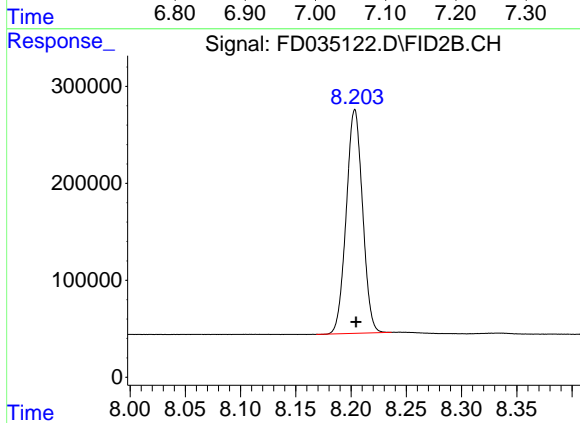


#4 n-Dodecane (C12)  
R.T.: 6.415 min  
Delta R.T.: 0.000 min  
Response: 2382520  
Conc: 20.64 ug/ml



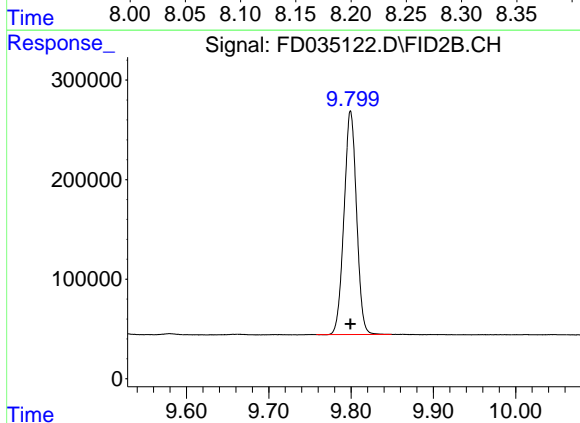
#5 A~2-methylnaphthalene (C12.89)

R.T.: 7.037 min  
Delta R.T.: 0.000 min  
Response: 2612152  
Conc: 20.80 ug/ml



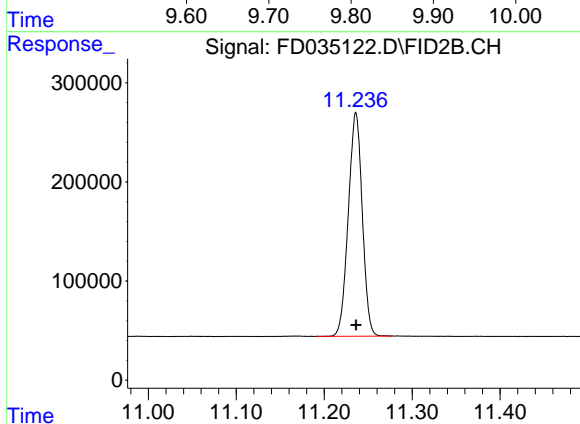
#6 n-Tetradecane (C14)

R.T.: 8.204 min  
Delta R.T.: -0.001 min  
Response: 2370313  
Conc: 20.68 ug/ml



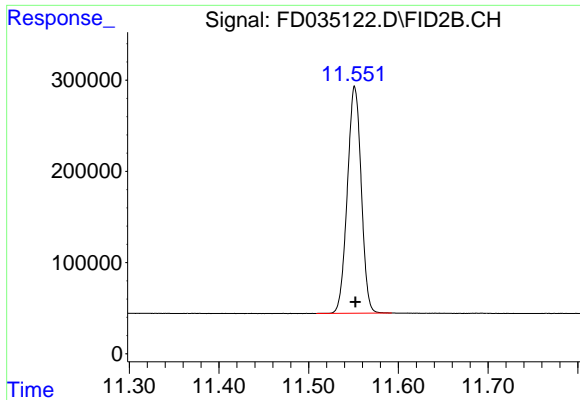
#7 n-Hexadecane (C16)

R.T.: 9.799 min  
Delta R.T.: 0.000 min  
Response: 2374155  
Conc: 20.63 ug/ml



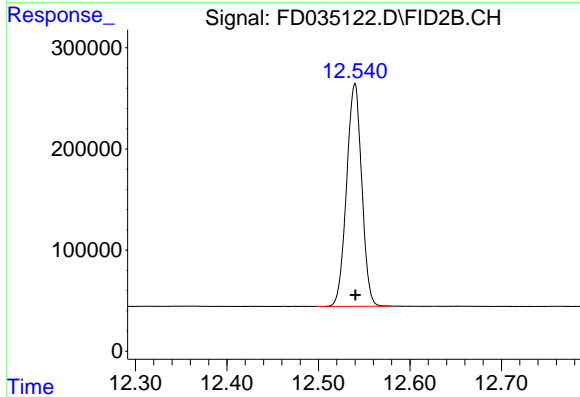
#8 n-Octadecane (C18)

R.T.: 11.236 min  
Delta R.T.: 0.000 min  
Response: 2492803  
Conc: 20.61 ug/ml



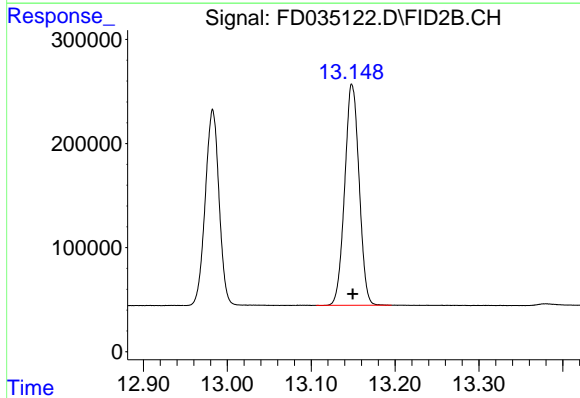
#9 ortho-Terphenyl (SURR)

R.T.: 11.551 min  
 Delta R.T.: 0.000 min  
 Response: 2672126  
 Conc: 20.60 ug/ml



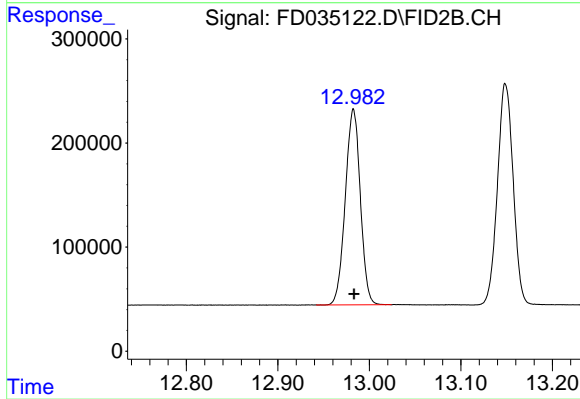
#10 n-Eicosane (C20)

R.T.: 12.540 min  
 Delta R.T.: 0.000 min  
 Response: 2533755  
 Conc: 20.67 ug/ml



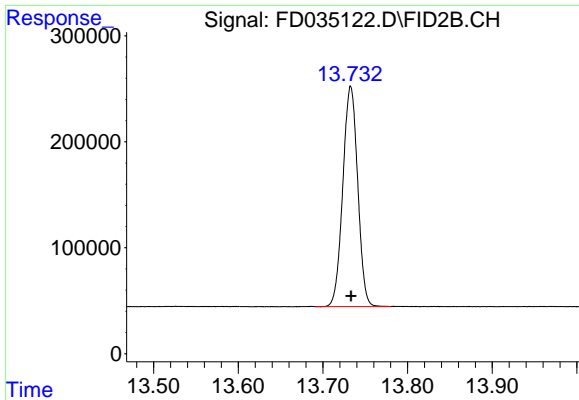
#11 n-Heneicosane (C21)

R.T.: 13.149 min  
 Delta R.T.: 0.000 min  
 Response: 2535010  
 Conc: 20.70 ug/ml

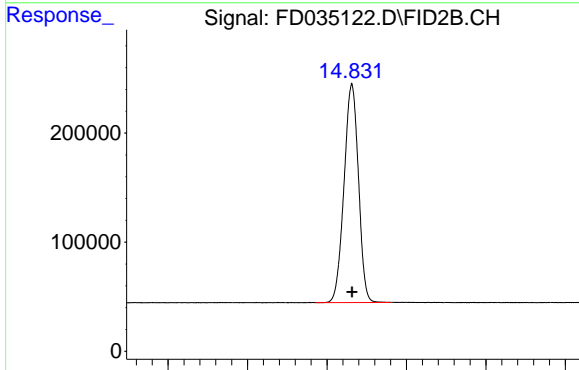


#12 1-chlorooctadecane (SURR)

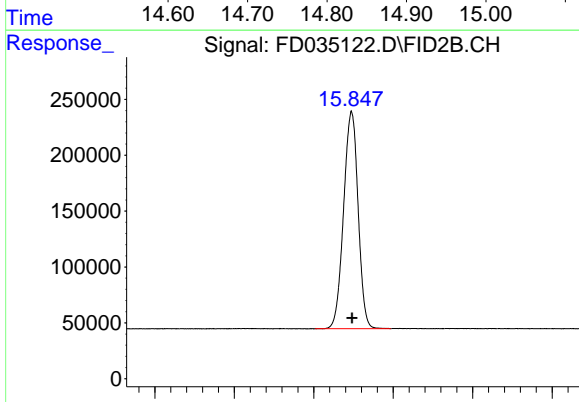
R.T.: 12.983 min  
 Delta R.T.: 0.000 min  
 Response: 2145762  
 Conc: 20.73 ug/ml



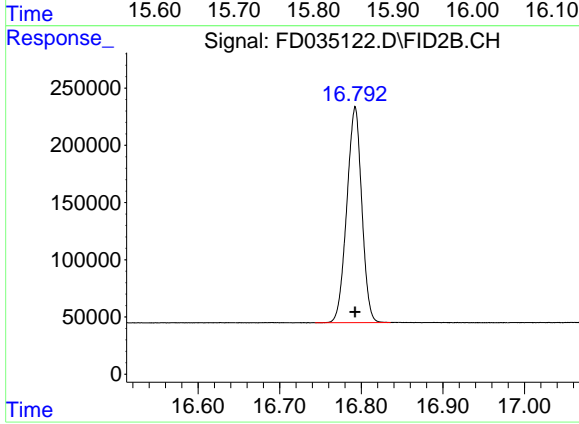
#13 n-Docosane (C22)  
R.T.: 13.733 min  
Delta R.T.: 0.000 min  
Response: 2537283  
Conc: 20.76 ug/ml



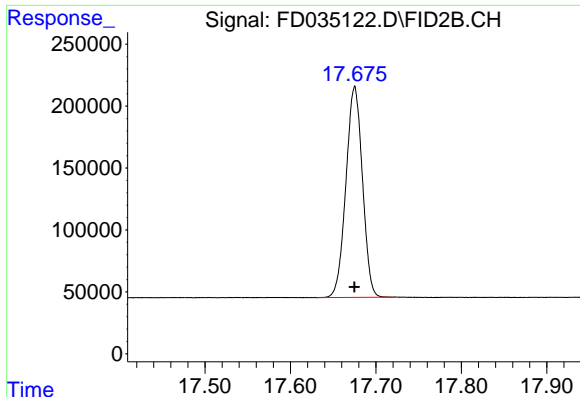
#14 n-Tetracosane (C24)  
R.T.: 14.831 min  
Delta R.T.: 0.000 min  
Response: 2524158  
Conc: 20.82 ug/ml



#15 n-Hexacosane (C26)  
R.T.: 15.848 min  
Delta R.T.: 0.000 min  
Response: 2466982  
Conc: 20.85 ug/ml

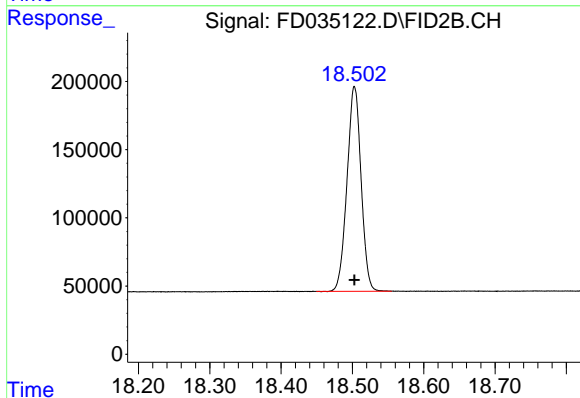


#16 n-Octacosane (C28)  
R.T.: 16.793 min  
Delta R.T.: 0.000 min  
Response: 2403435  
Conc: 20.78 ug/ml



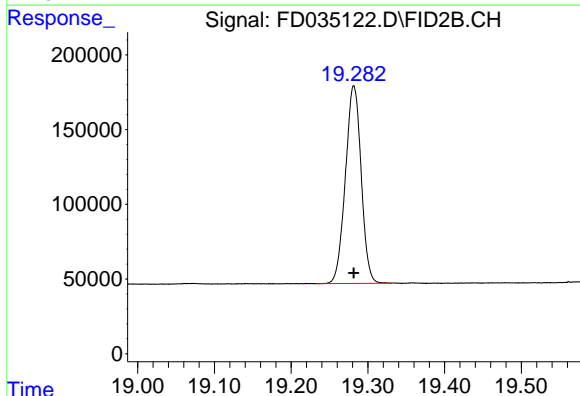
#17 n-Tricontane (C30)

R.T.: 17.675 min  
Delta R.T.: 0.000 min  
Response: 2284391  
Conc: 20.67 ug/ml



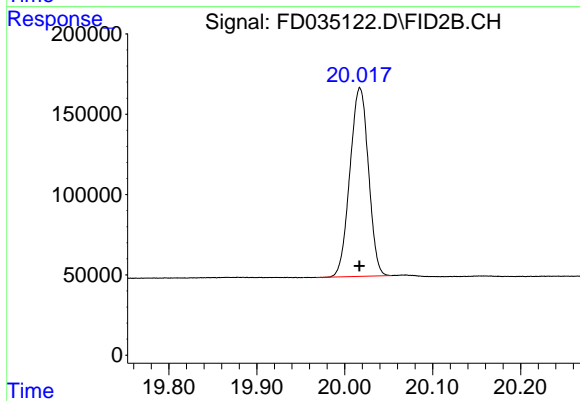
#18 n-Dotriacontane (C32)

R.T.: 18.503 min  
Delta R.T.: 0.000 min  
Response: 2058484  
Conc: 20.49 ug/ml



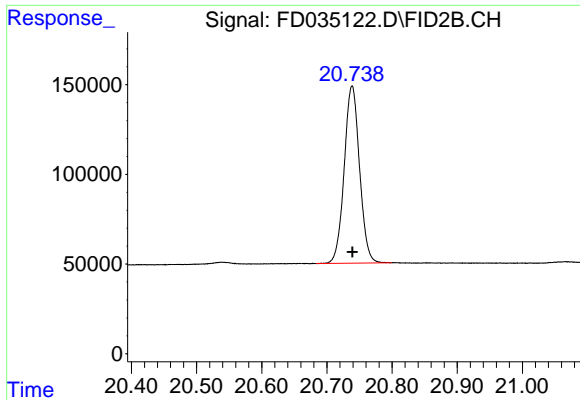
#19 n-Tetratriacontane (C34)

R.T.: 19.282 min  
Delta R.T.: 0.000 min  
Response: 1885742  
Conc: 20.51 ug/ml



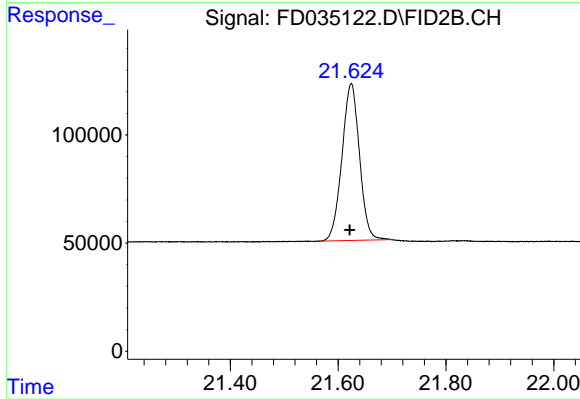
#20 n-Hexatriacontane (C36)

R.T.: 20.017 min  
Delta R.T.: 0.000 min  
Response: 1720151  
Conc: 20.52 ug/ml



#21 n-Octatriacontane (C38)

R.T.: 20.739 min  
Delta R.T.: 0.000 min  
Response: 1616666  
Conc: 20.48 ug/ml



#22 n-Tetracontane (C40)

R.T.: 21.625 min  
Delta R.T.: 0.003 min  
Response: 1637109  
Conc: 20.13 ug/ml