

Data Path : Z:\pestpcbsrv\HPCHEM1\FID_D\Data\FD102220AL\
 Data File : FD035124.D
 Signal(s) : FID2B.CH
 Acq On : 23 Oct 2020 00:22
 Operator : DD\AJ
 Sample : 20 PPM ALIPHATIC HC STD
 Misc :
 ALS Vial : 66 Sample Multiplier: 1

Integration File: autoint1.e
 Quant Time: Oct 23 03:16:00 2020
 Quant Method : Z:\pestpcbsrv\HPCHEM1\FID_D\methods\Alaphatic EPH 102220.M
 Quant Title : GC Extractables
 QLast Update : Fri Oct 23 03:14:17 2020
 Response via : Initial Calibration
 Integrator: ChemStation 6890 Scale Mode: Large solvent peaks clipped

Volume Inj. : 1 ul
 Signal Phase : Rxi-1ms
 Signal Info : 20M x 0.18mm x 0.18um

Compound	R.T.	Response	Conc Units

System Monitoring Compounds			
9) S ortho-Terphenyl (SURR)	11.551	2681223	20.675 ug/ml
Spiked Amount	50.000	Recovery	= 41.35%
12) S 1-chlorooctadecane (S...	12.983	2146615	20.743 ug/ml
Spiked Amount	50.000	Recovery	= 41.49%
Target Compounds			
1) T n-Nonane (C9)	3.341	2330890	20.690 ug/ml
2) T n-Decane (C10)	4.405	2342989	20.699 ug/ml
3) T A~Naphthalene (C11.7)	5.985	2568543	20.785 ug/ml
4) T n-Dodecane (C12)	6.416	2391864	20.720 ug/ml
5) T A~2-methylnaphthalene...	7.038	2620581	20.865 ug/ml
6) T n-Tetradecane (C14)	8.204	2377510	20.742 ug/ml
7) T n-Hexadecane (C16)	9.799	2377545	20.658 ug/ml
8) T n-Octadecane (C18)	11.235	2498388	20.655 ug/ml
10) T n-Eicosane (C20)	12.540	2535079	20.684 ug/ml
11) T n-Heneicosane (C21)	13.149	2532280	20.676 ug/ml
13) T n-Docosane (C22)	13.733	2527559	20.676 ug/ml
14) T n-Tetracosane (C24)	14.831	2513697	20.730 ug/ml
15) T n-Hexacosane (C26)	15.848	2455364	20.749 ug/ml
16) T n-Octacosane (C28)	16.793	2394976	20.703 ug/ml
17) T n-Tricontane (C30)	17.676	2282495	20.654 ug/ml
18) T n-Dotriacontane (C32)	18.503	2064679	20.554 ug/ml
19) T n-Tetratriacontane (C34)	19.282	1890438	20.563 ug/ml
20) T n-Hexatriacontane (C36)	20.017	1732806	20.674 ug/ml
21) T n-Octatriacontane (C38)	20.739	1622620	20.557 ug/ml
22) T n-Tetracontane (C40)	21.624	1638476	20.149 ug/ml

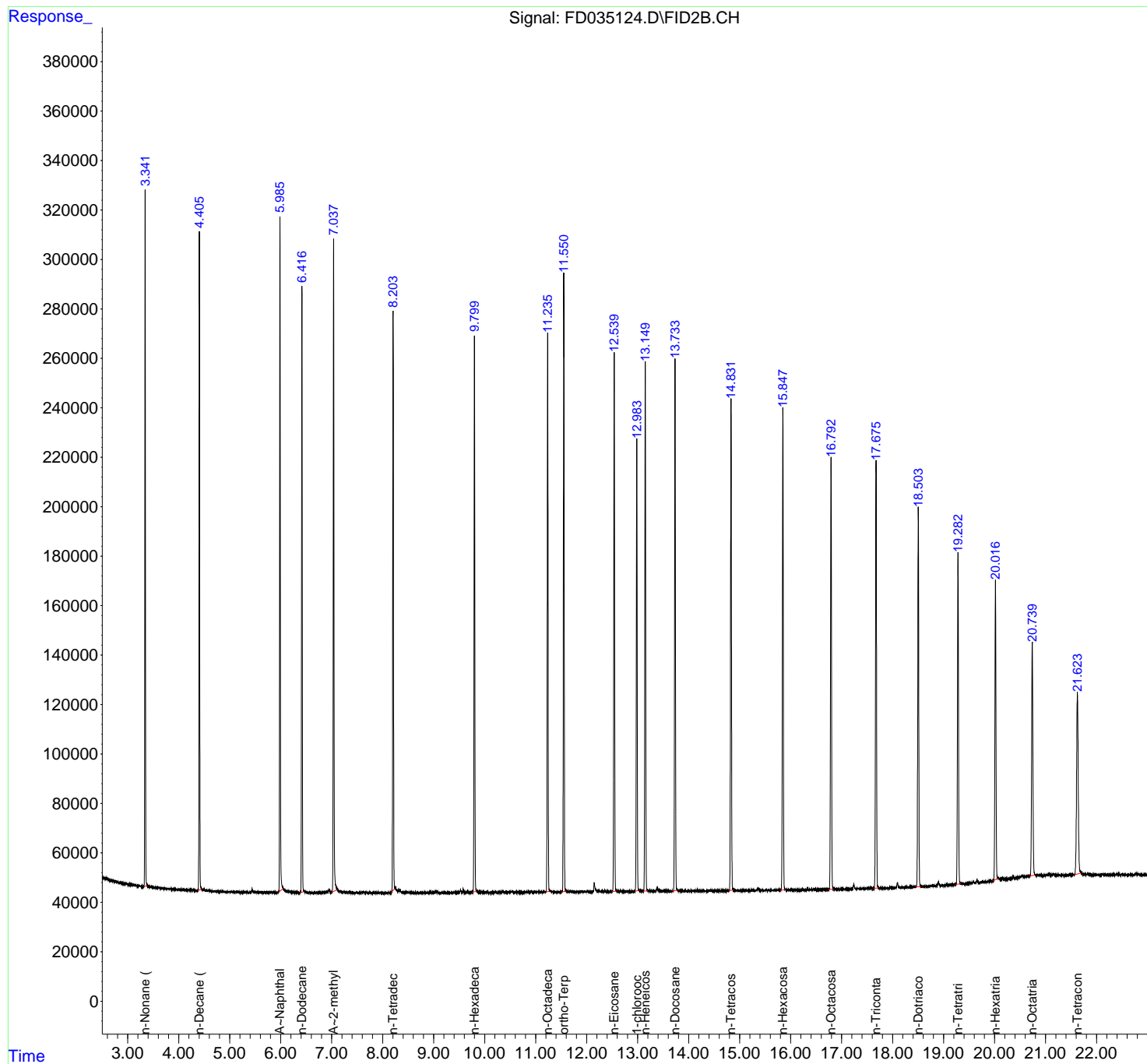
(f)=RT Delta > 1/2 Window

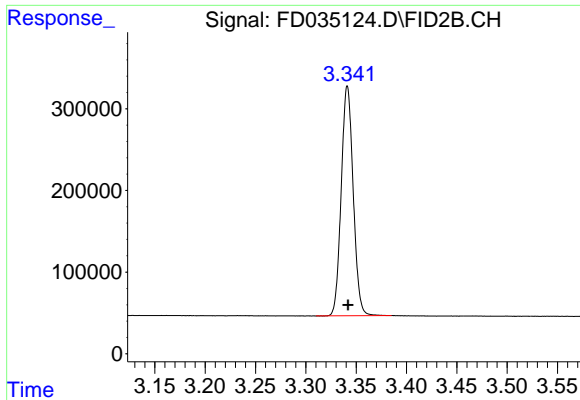
(m)=manual int.

Data Path : Z:\pestpcbsrv\HPCHEM1\FID_D\Data\FD102220AL\
Data File : FD035124.D
Signal(s) : FID2B.CH
Acq On : 23 Oct 2020 00:22
Operator : DD\AJ
Sample : 20 PPM ALIPHATIC HC STD
Misc :
ALS Vial : 66 Sample Multiplier: 1

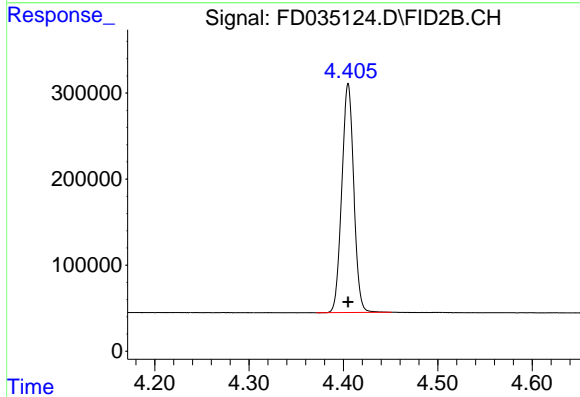
Integration File: autoint1.e
Quant Time: Oct 23 03:16:00 2020
Quant Method : Z:\pestpcbsrv\HPCHEM1\FID_D\methods\Aliphatic EPH 102220.M
Quant Title : GC Extractables
QLast Update : Fri Oct 23 03:14:17 2020
Response via : Initial Calibration
Integrator: ChemStation 6890 Scale Mode: Large solvent peaks clipped

Volume Inj. : 1 ul
Signal Phase : Rxi-1ms
Signal Info : 20M x 0.18mm x 0.18um

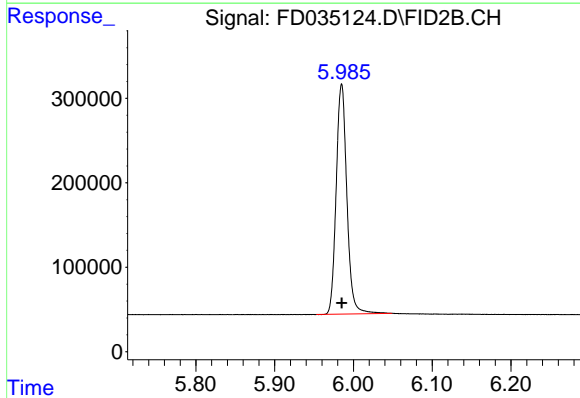




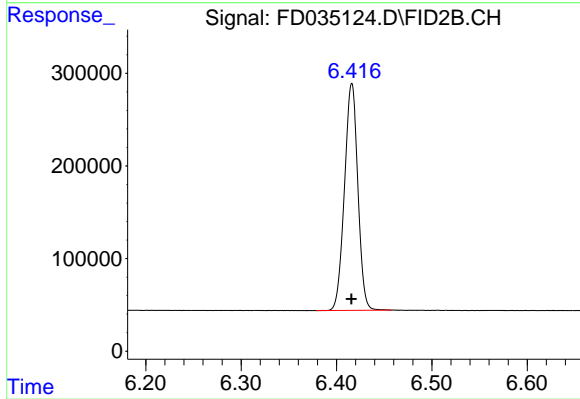
#1 n-Nonane (C9)
R.T.: 3.341 min
Delta R.T.: 0.000 min
Response: 2330890
Conc: 20.69 ug/ml



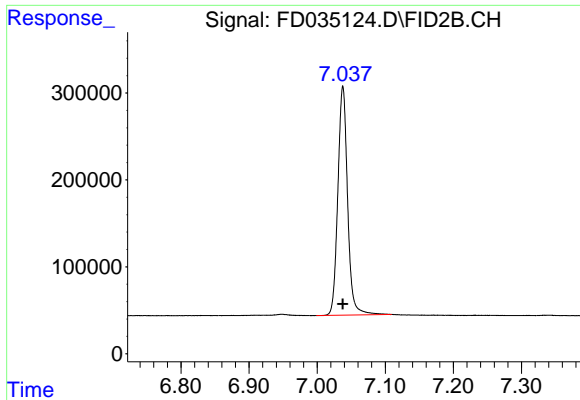
#2 n-Decane (C10)
R.T.: 4.405 min
Delta R.T.: 0.000 min
Response: 2342989
Conc: 20.70 ug/ml



#3 A~Naphthalene (C11.7)
R.T.: 5.985 min
Delta R.T.: 0.000 min
Response: 2568543
Conc: 20.79 ug/ml

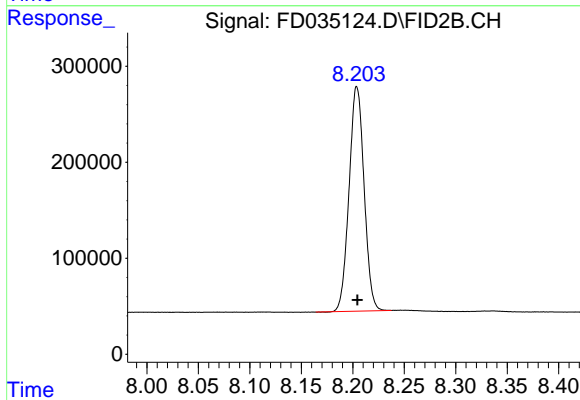


#4 n-Dodecane (C12)
R.T.: 6.416 min
Delta R.T.: 0.000 min
Response: 2391864
Conc: 20.72 ug/ml



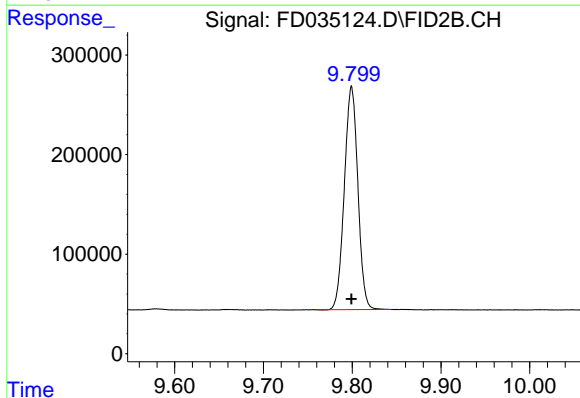
#5 A~2-methylnaphthalene (C12.89)

R.T.: 7.038 min
Delta R.T.: 0.000 min
Response: 2620581
Conc: 20.86 ug/ml



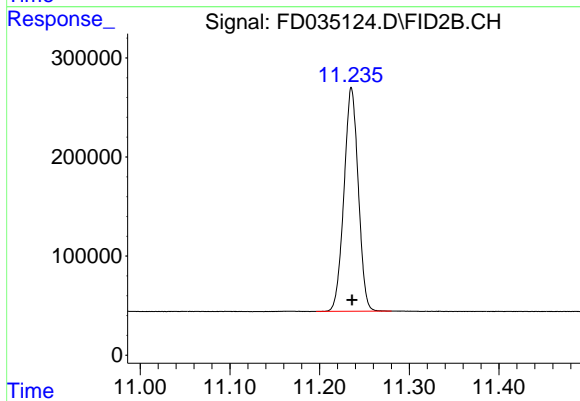
#6 n-Tetradecane (C14)

R.T.: 8.204 min
Delta R.T.: 0.000 min
Response: 2377510
Conc: 20.74 ug/ml



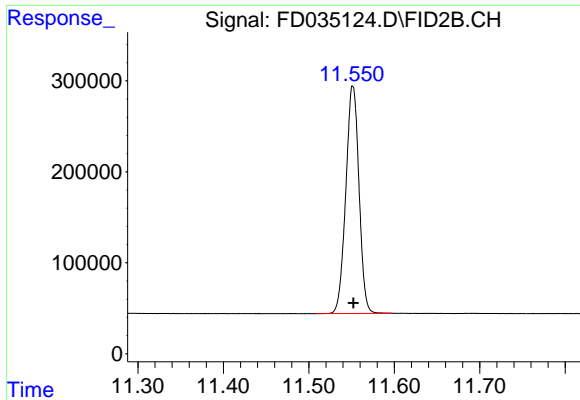
#7 n-Hexadecane (C16)

R.T.: 9.799 min
Delta R.T.: 0.000 min
Response: 2377545
Conc: 20.66 ug/ml



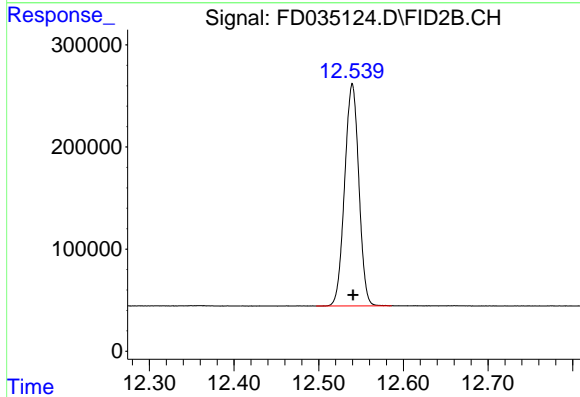
#8 n-Octadecane (C18)

R.T.: 11.235 min
Delta R.T.: 0.000 min
Response: 2498388
Conc: 20.66 ug/ml



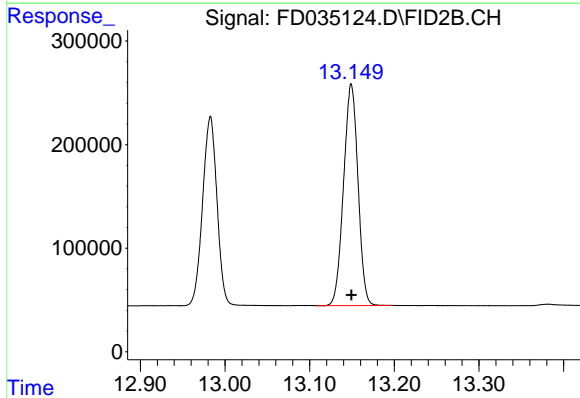
#9 ortho-Terphenyl (SURR)

R.T.: 11.551 min
Delta R.T.: 0.000 min
Response: 2681223
Conc: 20.68 ug/ml



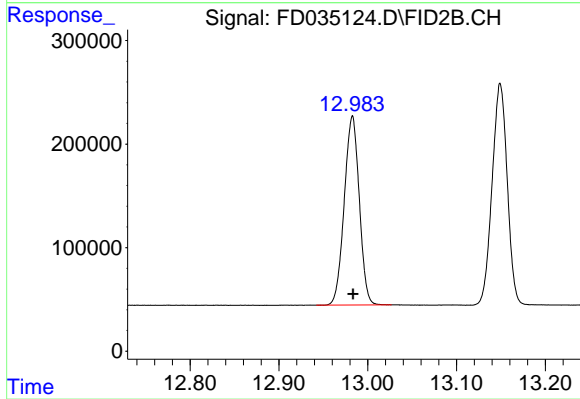
#10 n-Eicosane (C20)

R.T.: 12.540 min
Delta R.T.: 0.000 min
Response: 2535079
Conc: 20.68 ug/ml



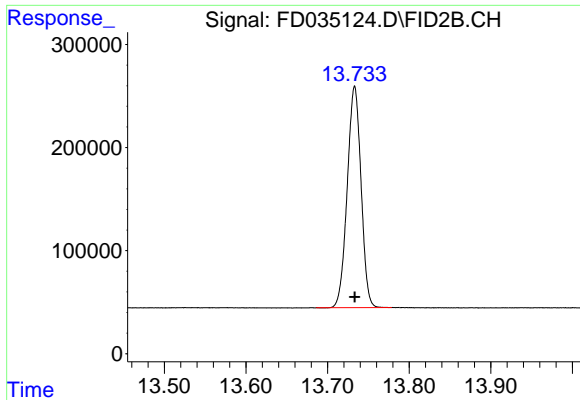
#11 n-Heneicosane (C21)

R.T.: 13.149 min
Delta R.T.: 0.000 min
Response: 2532280
Conc: 20.68 ug/ml



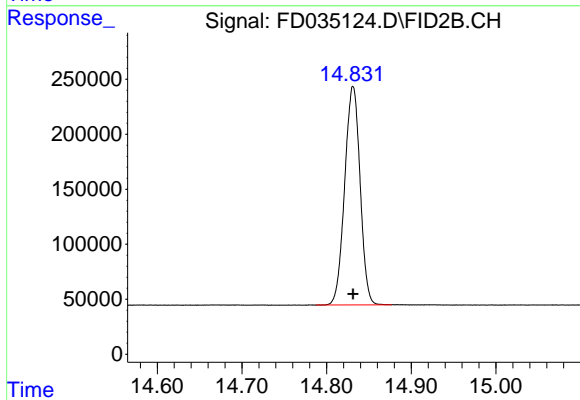
#12 1-chlorooctadecane (SURR)

R.T.: 12.983 min
Delta R.T.: 0.000 min
Response: 2146615
Conc: 20.74 ug/ml



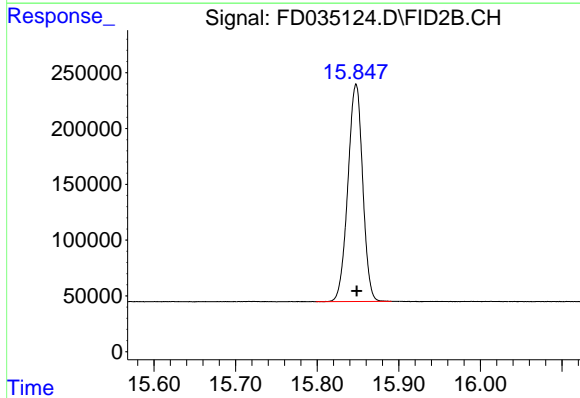
#13 n-Docosane (C22)

R.T.: 13.733 min
Delta R.T.: 0.000 min
Response: 2527559
Conc: 20.68 ug/ml



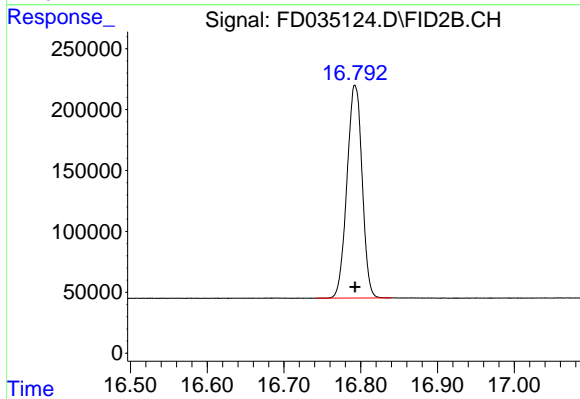
#14 n-Tetracosane (C24)

R.T.: 14.831 min
Delta R.T.: 0.000 min
Response: 2513697
Conc: 20.73 ug/ml



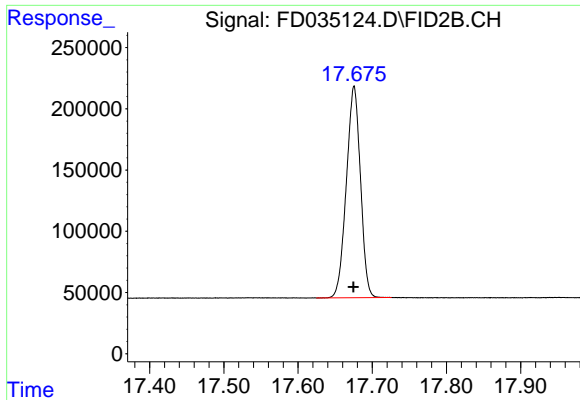
#15 n-Hexacosane (C26)

R.T.: 15.848 min
Delta R.T.: 0.000 min
Response: 2455364
Conc: 20.75 ug/ml



#16 n-Octacosane (C28)

R.T.: 16.793 min
Delta R.T.: 0.000 min
Response: 2394976
Conc: 20.70 ug/ml



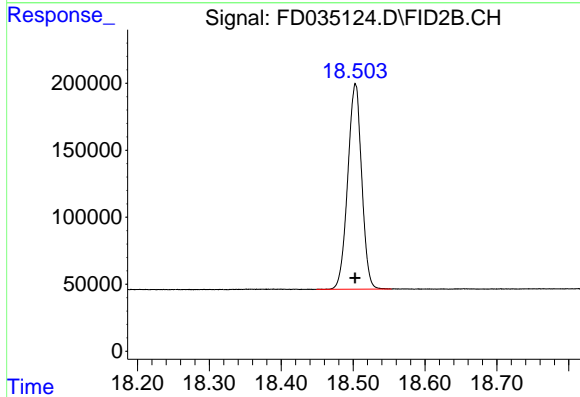
#17 n-Tricontane (C30)

R.T.: 17.676 min

Delta R.T.: 0.000 min

Response: 2282495

Conc: 20.65 ug/ml



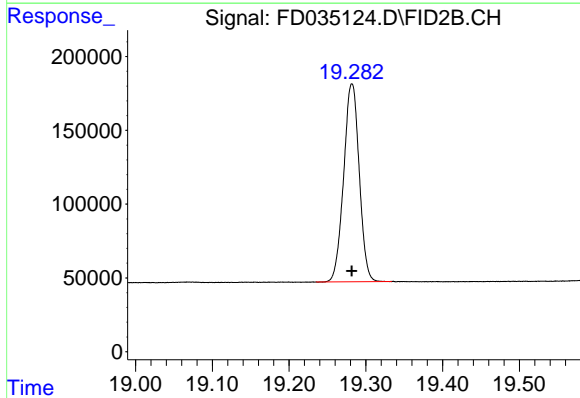
#18 n-Dotriacontane (C32)

R.T.: 18.503 min

Delta R.T.: 0.000 min

Response: 2064679

Conc: 20.55 ug/ml



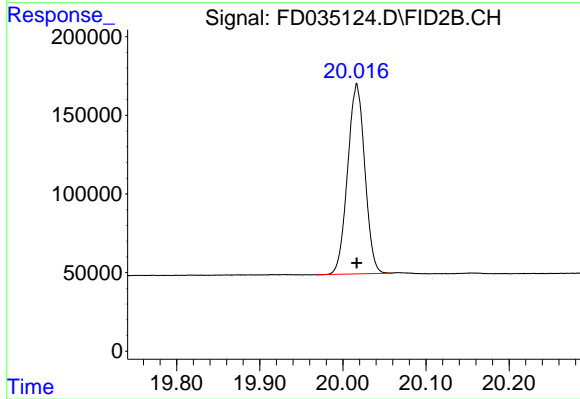
#19 n-Tetratriacontane (C34)

R.T.: 19.282 min

Delta R.T.: 0.000 min

Response: 1890438

Conc: 20.56 ug/ml



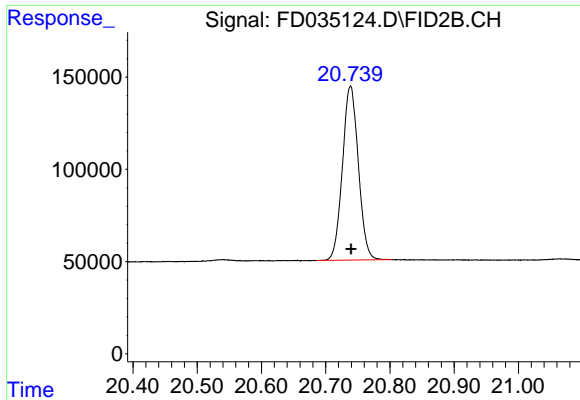
#20 n-Hexatriacontane (C36)

R.T.: 20.017 min

Delta R.T.: 0.000 min

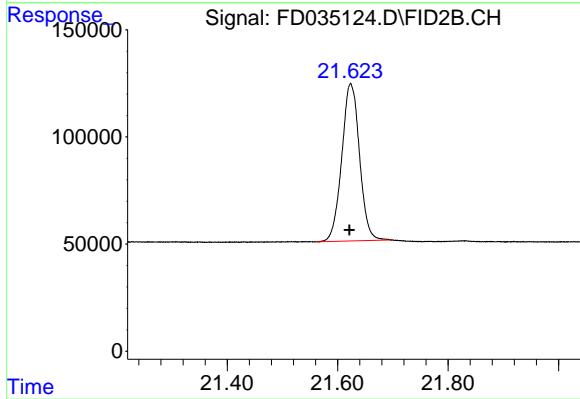
Response: 1732806

Conc: 20.67 ug/ml



#21 n-Octatriacontane (C38)

R.T.: 20.739 min
Delta R.T.: 0.000 min
Response: 1622620
Conc: 20.56 ug/ml



#22 n-Tetracontane (C40)

R.T.: 21.624 min
Delta R.T.: 0.002 min
Response: 1638476
Conc: 20.15 ug/ml