

Data Path : Z:\pestpcbsrv\HPCHEM1\FID_D\Data\FD102224AR\
Data File : FD048564.D
Signal(s) : FID2B.ch
Acq On : 23 Oct 2024 12:09
Operator : YP/AJ
Sample : I.BLK
Misc :
ALS Vial : 51 Sample Multiplier: 1

Instrument :
FID_D
ClientSampleId :
I.BLK

Integration File: autoint1.e
Quant Time: Oct 24 04:44:29 2024
Quant Method : Z:\pestpcbsrv\HPCHEM1\FID_D\methods\Aromatic EPH 093024.M
Quant Title : GC Extractables
QLast Update : Mon Sep 30 14:17:34 2024
Response via : Initial Calibration
Integrator: ChemStation

Volume Inj. : 1 µl
Signal Phase : Rxi-1ms
Signal Info : 20M x 0.18mm x 0.18µm

Compound	R.T.	Response	Conc Units
----------	------	----------	------------

System Monitoring Compounds

Target Compounds

(f)=RT Delta > 1/2 Window

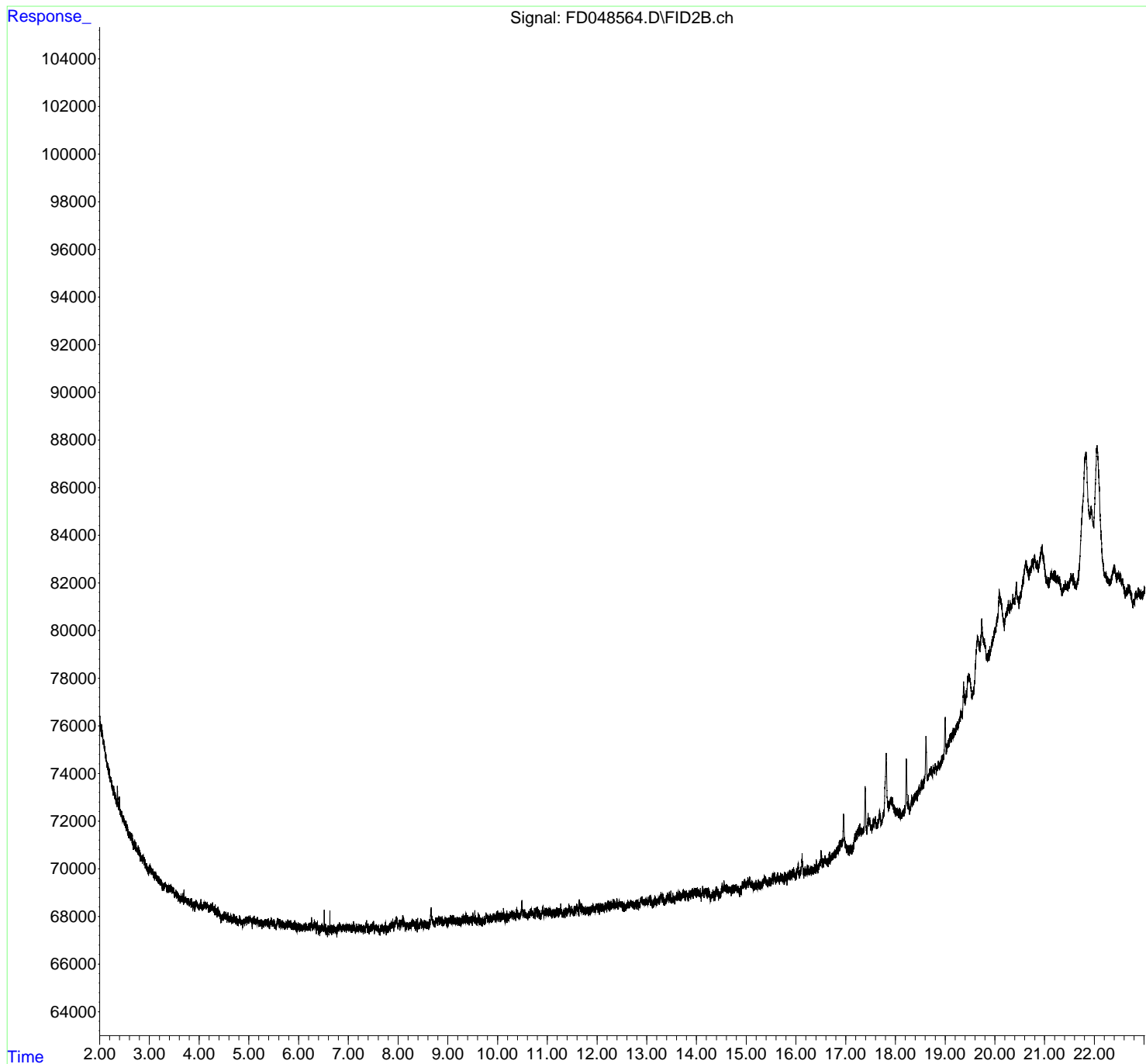
(m)=manual int.

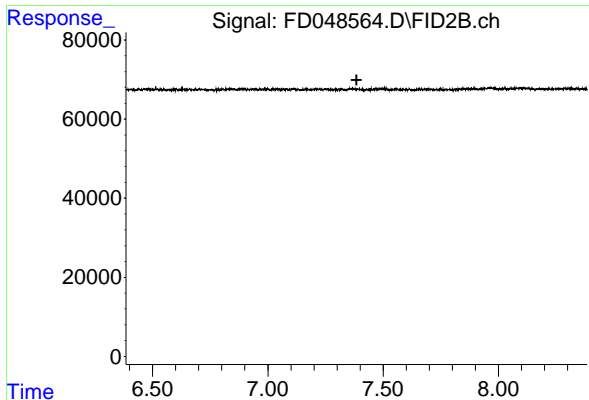
Data Path : Z:\pestpcbsrv\HPCHEM1\FID_D\Data\FD102224AR\
Data File : FD048564.D
Signal(s) : FID2B.ch
Acq On : 23 Oct 2024 12:09
Operator : YP/AJ
Sample : I.BLK
Misc :
ALS Vial : 51 Sample Multiplier: 1

Instrument :
FID_D
ClientSampleId :
I.BLK

Integration File: autoint1.e
Quant Time: Oct 24 04:44:29 2024
Quant Method : Z:\pestpcbsrv\HPCHEM1\FID_D\methods\Aromatic EPH 093024.M
Quant Title : GC Extractables
QLast Update : Mon Sep 30 14:17:34 2024
Response via : Initial Calibration
Integrator: ChemStation

Volume Inj. : 1 µl
Signal Phase : Rxi-1ms
Signal Info : 20M x 0.18mm x 0.18µm

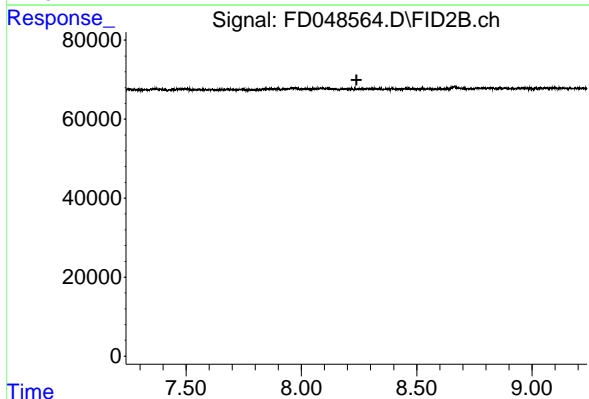




#4 2-Bromonaphthalene (SURR)

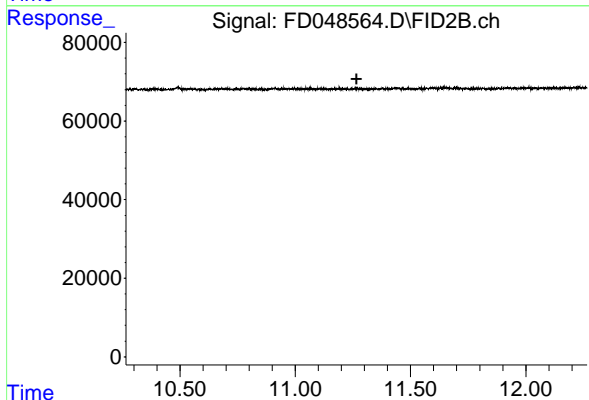
R.T.: 0.000 min
 Exp R.T. : 7.384 min
 Response: 0
 Conc: N.D.

Instrument :
 FID_D
 ClientSampleId :
 I.BLK



#6 2-Fluorobiphenyl (SURR)

R.T.: 0.000 min
 Exp R.T. : 8.239 min
 Response: 0
 Conc: N.D.



#11 ortho-Terphenyl (SURR)

R.T.: 0.000 min
 Exp R.T. : 11.266 min
 Response: 0
 Conc: N.D.