

Data Path : Z:\pestpcbsrv\HPCHEM1\FID\_D\Data\FD102518AL\  
 Data File : FD026116.D  
 Signal(s) : FID2B.CH  
 Acq On : 25 Oct 2018 22:09  
 Operator : AJ\SJ  
 Sample : J5649-05  
 Misc :  
 ALS Vial : 64 Sample Multiplier: 1

Integration File: autoint1.e  
 Quant Time: Oct 26 02:19:20 2018  
 Quant Method : Z:\pestpcbsrv\HPCHEM1\FID\_D\methods\Alaphatic EPH 101818.M  
 Quant Title : GC Extractables  
 QLast Update : Thu Oct 18 18:00:43 2018  
 Response via : Initial Calibration  
 Integrator: ChemStation 6890 Scale Mode: Large solvent peaks clipped

Volume Inj. : 1 ul  
 Signal Phase : Rxi-1ms  
 Signal Info : 20M x 0.18mm x 0.18um

Compound	R.T.	Response	Conc Units
-----			
System Monitoring Compounds			
9) S ortho-Terphenyl (SURR)	11.311	3145969	42.775 ug/ml
Spiked Amount	50.000	Recovery	= 85.55%
12) S 1-chlorooctadecane (S...	12.753	2383848	44.782 ug/ml
Spiked Amount	50.000	Recovery	= 89.56%
Target Compounds			
6) T n-Tetradecane (C14)	8.035	184666	2.868 ug/ml
16) T n-Octacosane (C28)	16.610	265459	4.363 ug/ml
-----			

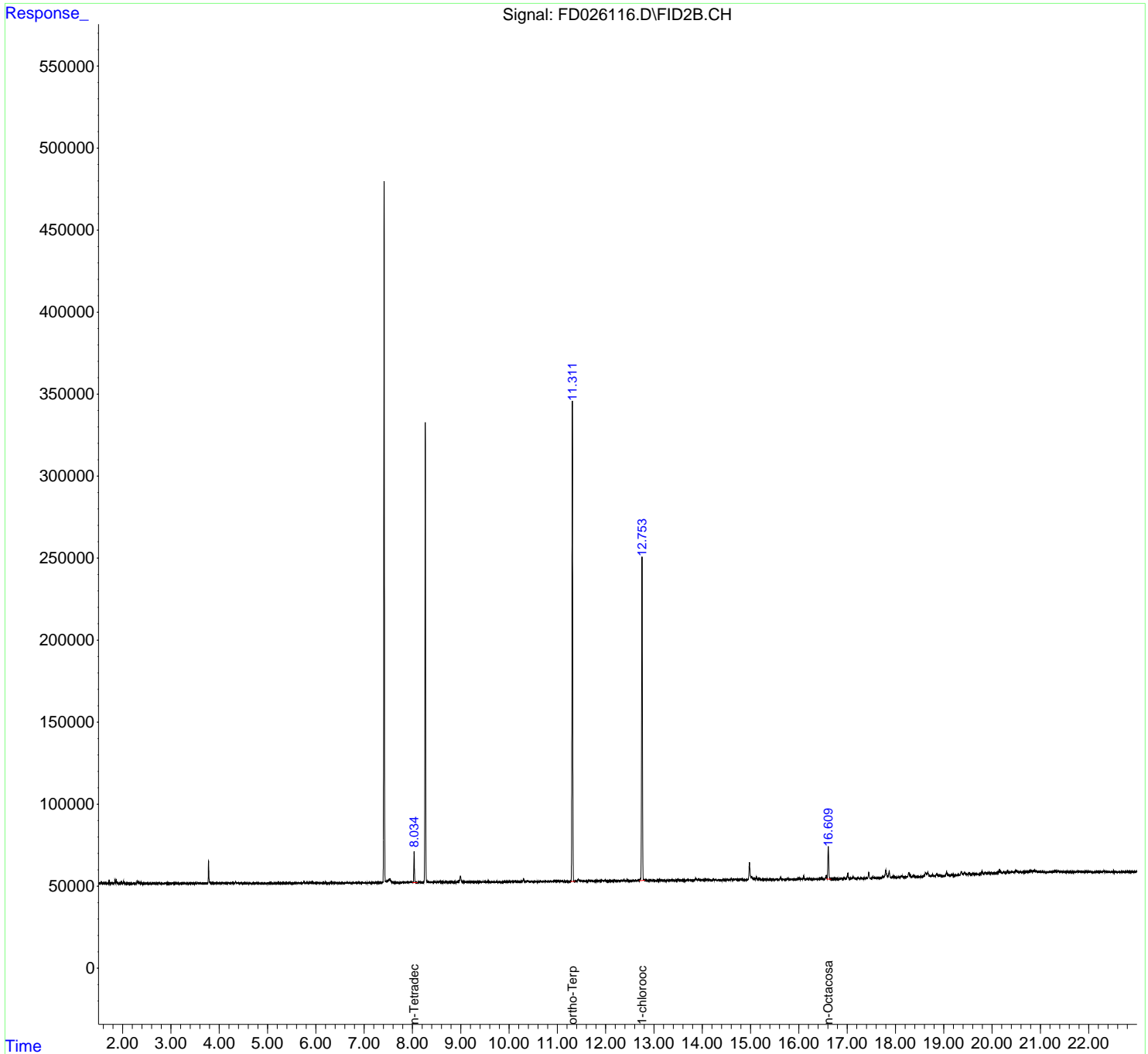
(f)=RT Delta > 1/2 Window

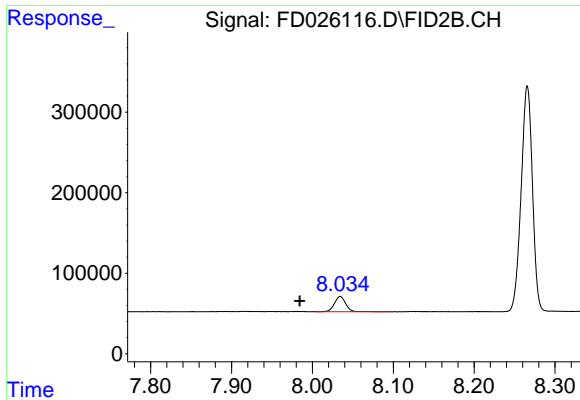
(m)=manual int.

Data Path : Z:\pestpcbsrv\HPCHEM1\FID\_D\Data\FD102518AL\  
Data File : FD026116.D  
Signal(s) : FID2B.CH  
Acq On : 25 Oct 2018 22:09  
Operator : AJ\SJ  
Sample : J5649-05  
Misc :  
ALS Vial : 64 Sample Multiplier: 1

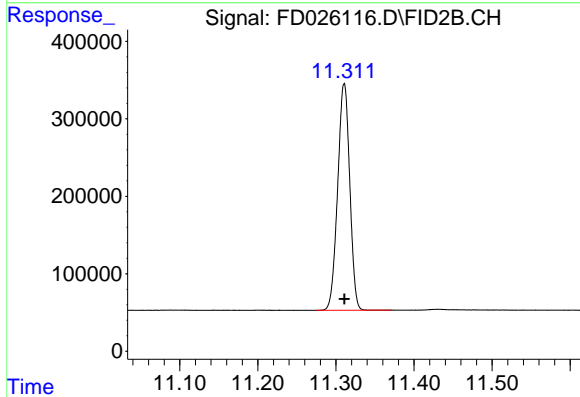
Integration File: autoint1.e  
Quant Time: Oct 26 02:19:20 2018  
Quant Method : Z:\pestpcbsrv\HPCHEM1\FID\_D\methods\Alaphatic EPH 101818.M  
Quant Title : GC Extractables  
QLast Update : Thu Oct 18 18:00:43 2018  
Response via : Initial Calibration  
Integrator: ChemStation 6890 Scale Mode: Large solvent peaks clipped

Volume Inj. : 1 ul  
Signal Phase : Rxi-1ms  
Signal Info : 20M x 0.18mm x 0.18um

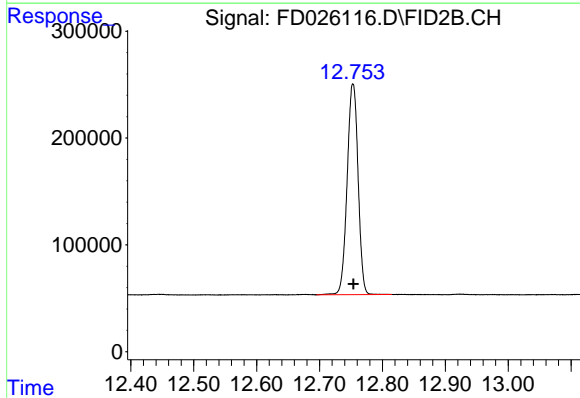




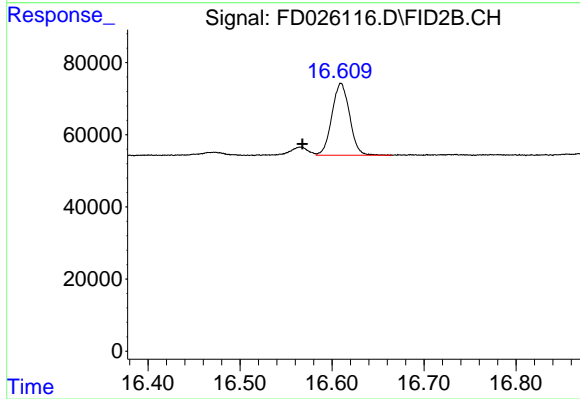
#6 n-Tetradecane (C14)  
R.T.: 8.035 min  
Delta R.T.: 0.050 min  
Response: 184666  
Conc: 2.87 ug/ml



#9 ortho-Terphenyl (SURRE)  
R.T.: 11.311 min  
Delta R.T.: 0.000 min  
Response: 3145969  
Conc: 42.78 ug/ml



#12 1-chlorooctadecane (SURRE)  
R.T.: 12.753 min  
Delta R.T.: -0.001 min  
Response: 2383848  
Conc: 44.78 ug/ml



#16 n-Octacosane (C28)  
R.T.: 16.610 min  
Delta R.T.: 0.042 min  
Response: 265459  
Conc: 4.36 ug/ml