

Data Path : Z:\pestpcbsrv\HPCHEM1\FID_D\Data\FD102618AR\
 Data File : FD026135.D
 Signal(s) : FID2B.CH
 Acq On : 26 Oct 2018 18:26
 Operator : AJ\SJ
 Sample : J5688-01
 Misc :
 ALS Vial : 59 Sample Multiplier: 1

Integration File: autoint1.e
 Quant Time: Oct 27 00:06:29 2018
 Quant Method : Z:\pestpcbsrv\HPCHEM1\FID_D\methods\Aromatic EPH 101718.M
 Quant Title : GC Extractables
 QLast Update : Thu Oct 18 11:23:05 2018
 Response via : Initial Calibration
 Integrator: ChemStation 6890 Scale Mode: Large solvent peaks clipped

Volume Inj. : 1 µl
 Signal Phase : Rxi-1ms
 Signal Info : 20M x 0.18mm x 0.18µm

Compound	R.T.	Response	Conc Units

System Monitoring Compounds			
4) S 2-Bromonaphthalene (S...	7.414	2942091	39.796 ug/ml
Spiked Amount 50.000		Recovery =	79.59%
6) S 2-Fluorobiphenyl (SURR)	8.265	1996597	38.894 ug/ml
Spiked Amount 50.000 Range 0 - 131		Recovery =	77.79%
11) S ortho-Terphenyl (SURR)	11.311	3005003	38.039 ug/ml
Spiked Amount 50.000		Recovery =	76.08%

Target Compounds

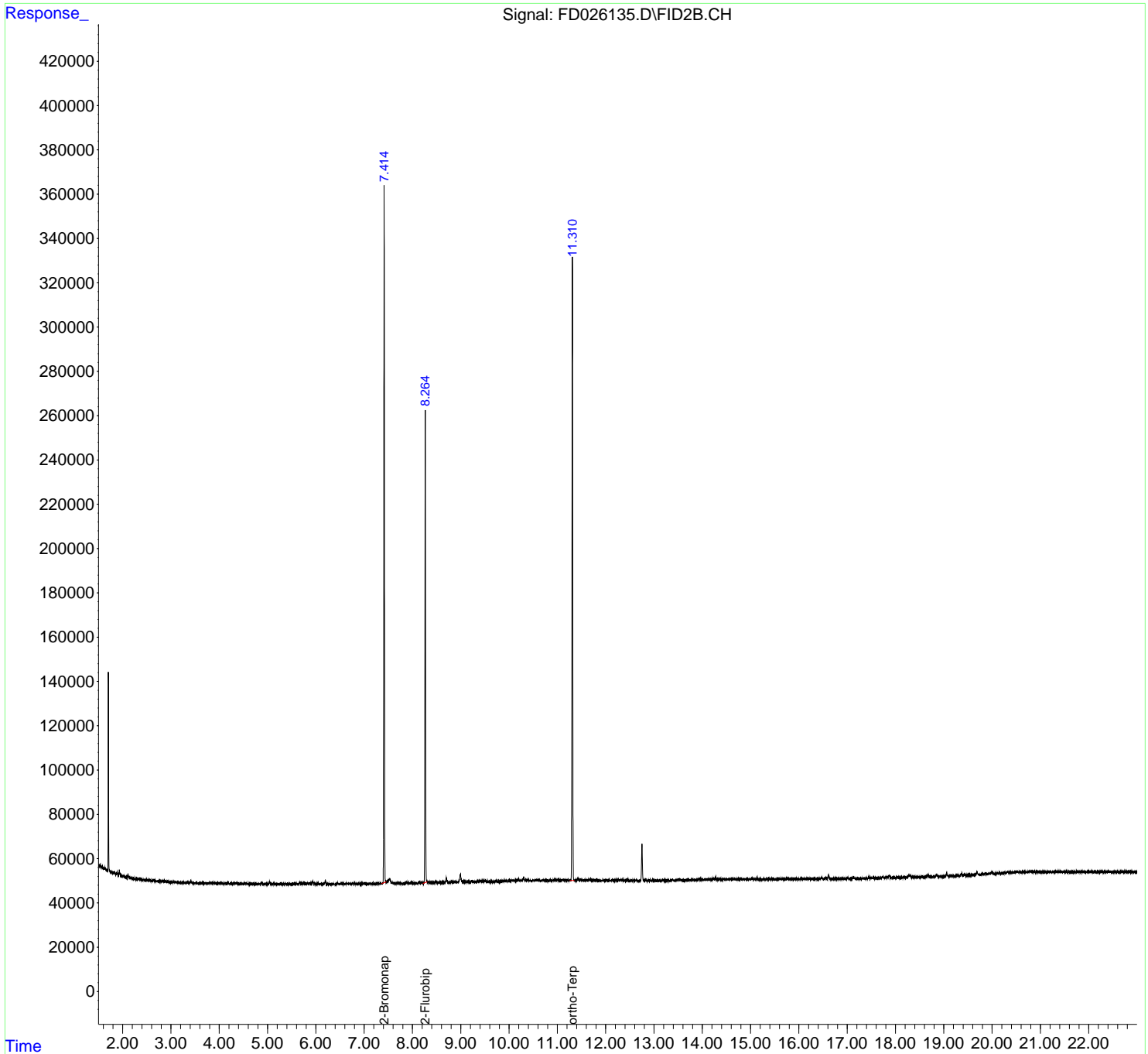
(f)=RT Delta > 1/2 Window

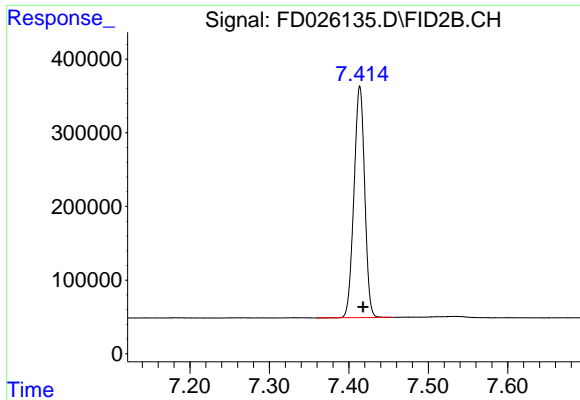
(m)=manual int.

Data Path : Z:\pestpcbsrv\HPCHEM1\FID_D\Data\FD102618AR\
Data File : FD026135.D
Signal(s) : FID2B.CH
Acq On : 26 Oct 2018 18:26
Operator : AJ\SJ
Sample : J5688-01
Misc :
ALS Vial : 59 Sample Multiplier: 1

Integration File: autoint1.e
Quant Time: Oct 27 00:06:29 2018
Quant Method : Z:\pestpcbsrv\HPCHEM1\FID_D\methods\Aromatic EPH 101718.M
Quant Title : GC Extractables
QLast Update : Thu Oct 18 11:23:05 2018
Response via : Initial Calibration
Integrator: ChemStation 6890 Scale Mode: Large solvent peaks clipped

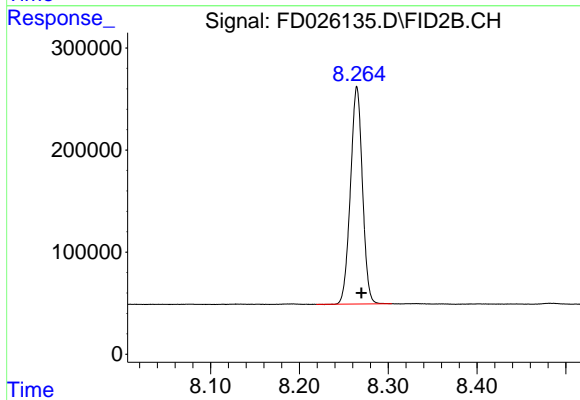
Volume Inj. : 1 µl
Signal Phase : Rxi-1ms
Signal Info : 20M x 0.18mm x 0.18µm





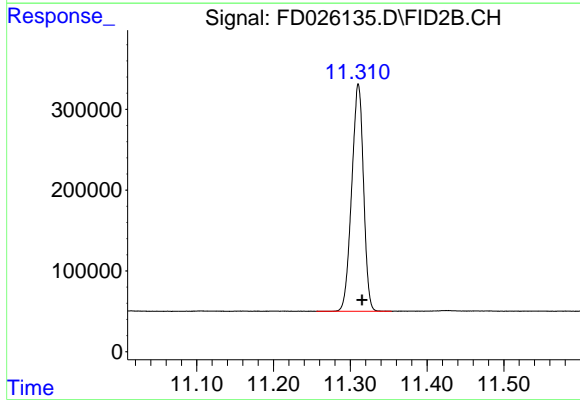
#4 2-Bromonaphthalene (SURR)

R.T.: 7.414 min
Delta R.T.: -0.004 min
Response: 2942091
Conc: 39.80 ug/ml



#6 2-Fluorobiphenyl (SURR)

R.T.: 8.265 min
Delta R.T.: -0.005 min
Response: 1996597
Conc: 38.89 ug/ml



#11 ortho-Terphenyl (SURR)

R.T.: 11.311 min
Delta R.T.: -0.005 min
Response: 3005003
Conc: 38.04 ug/ml