

Data Path : Z:\pestpcbsrv\HPCHEM1\FID_D\Data\FD102618AR\
 Data File : FD026136.D
 Signal(s) : FID2B.CH
 Acq On : 26 Oct 2018 19:05
 Operator : AJ\SJ
 Sample : J5683-02D
 Misc :
 ALS Vial : 60 Sample Multiplier: 1

Integration File: autoint1.e
 Quant Time: Oct 27 00:06:38 2018
 Quant Method : Z:\pestpcbsrv\HPCHEM1\FID_D\methods\Aromatic EPH 101718.M
 Quant Title : GC Extractables
 QLast Update : Thu Oct 18 11:23:05 2018
 Response via : Initial Calibration
 Integrator: ChemStation 6890 Scale Mode: Large solvent peaks clipped

Volume Inj. : 1 µl
 Signal Phase : Rxi-1ms
 Signal Info : 20M x 0.18mm x 0.18µm

Compound	R.T.	Response	Conc Units

System Monitoring Compounds			
4) S 2-Bromonaphthalene (S...	7.413	2346954	31.746 ug/ml
Spiked Amount 50.000		Recovery =	63.49%
6) S 2-Fluorobiphenyl (SURR)	8.265	1658231	32.303 ug/ml
Spiked Amount 50.000 Range 0 - 131		Recovery =	64.61%
11) S ortho-Terphenyl (SURR)	11.310	1948458	24.664 ug/ml
Spiked Amount 50.000		Recovery =	49.33%

Target Compounds

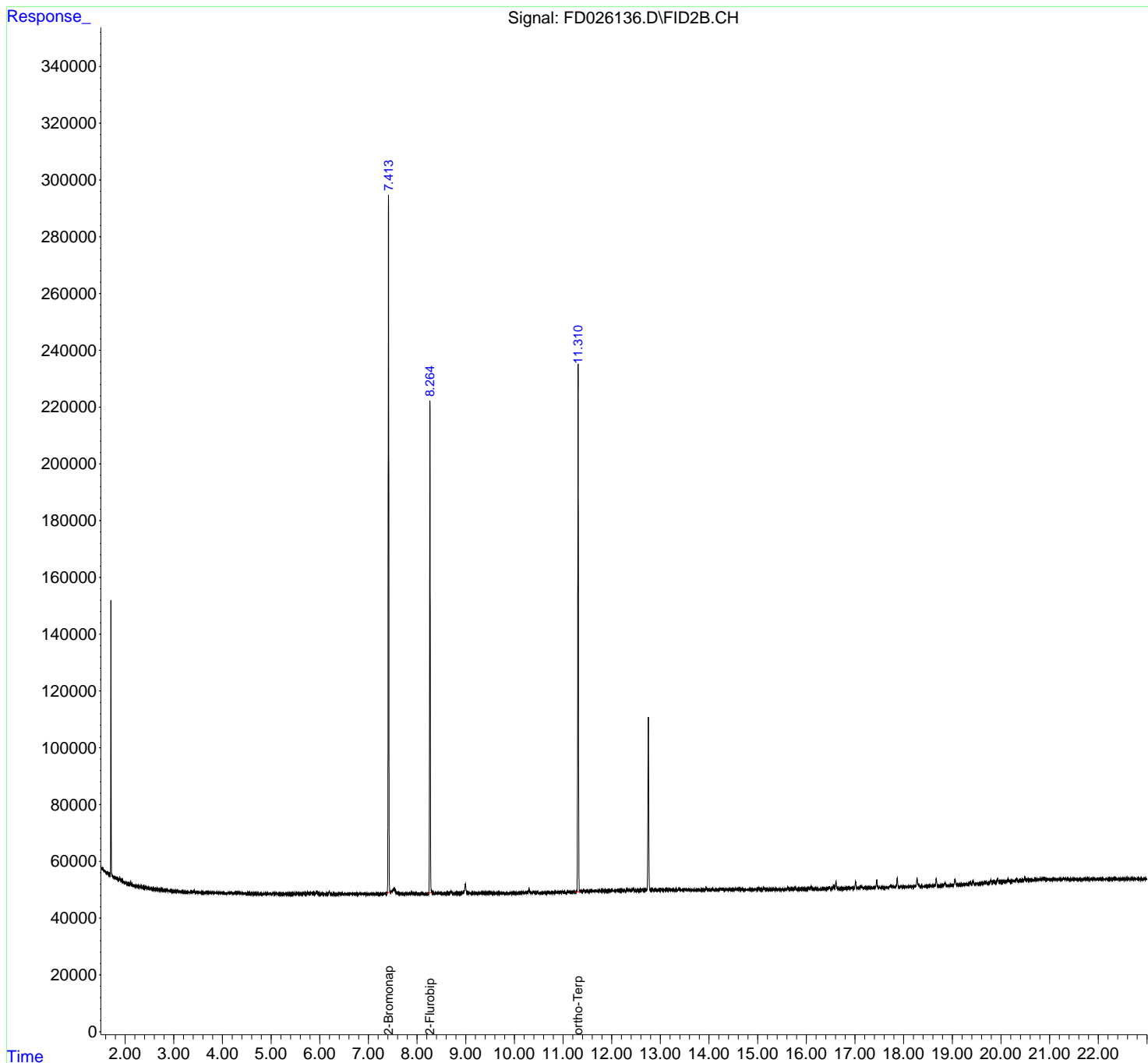
(f)=RT Delta > 1/2 Window

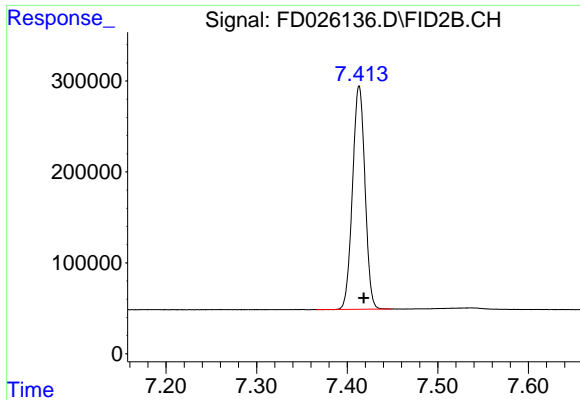
(m)=manual int.

Data Path : Z:\pestpcbsrv\HPCHEM1\FID_D\Data\FD102618AR\
Data File : FD026136.D
Signal(s) : FID2B.CH
Acq On : 26 Oct 2018 19:05
Operator : AJ\SJ
Sample : J5683-02D
Misc :
ALS Vial : 60 Sample Multiplier: 1

Integration File: autoint1.e
Quant Time: Oct 27 00:06:38 2018
Quant Method : Z:\pestpcbsrv\HPCHEM1\FID_D\methods\Aromatic EPH 101718.M
Quant Title : GC Extractables
QLast Update : Thu Oct 18 11:23:05 2018
Response via : Initial Calibration
Integrator: ChemStation 6890 Scale Mode: Large solvent peaks clipped

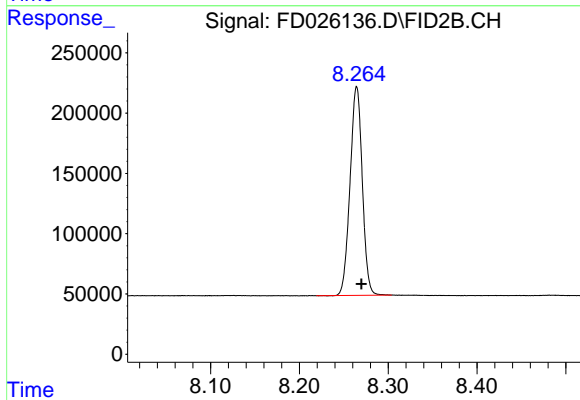
Volume Inj. : 1 µl
Signal Phase : Rxi-1ms
Signal Info : 20M x 0.18mm x 0.18µm





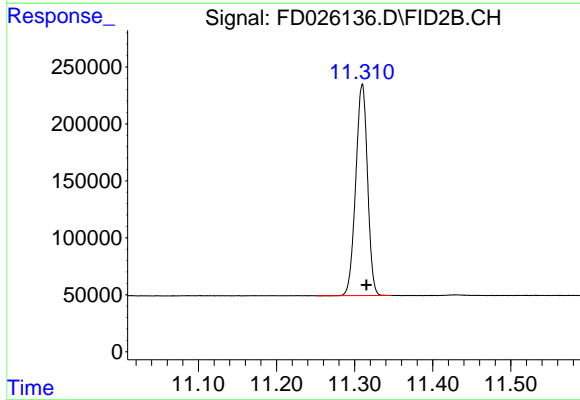
#4 2-Bromonaphthalene (SURR)

R.T.: 7.413 min
Delta R.T.: -0.005 min
Response: 2346954
Conc: 31.75 ug/ml



#6 2-Fluorobiphenyl (SURR)

R.T.: 8.265 min
Delta R.T.: -0.005 min
Response: 1658231
Conc: 32.30 ug/ml



#11 ortho-Terphenyl (SURR)

R.T.: 11.310 min
Delta R.T.: -0.005 min
Response: 1948458
Conc: 24.66 ug/ml