

Data Path : Z:\pestpcbsrv\HPCHEM1\FID\_D\Data\FD102618AR\  
Data File : FD026139.D  
Signal(s) : FID2B.CH  
Acq On : 26 Oct 2018 20:59  
Operator : AJ\SJ  
Sample : I.BLK  
Misc :  
ALS Vial : 51 Sample Multiplier: 1

Integration File: autoint1.e  
Quant Time: Oct 27 00:07:05 2018  
Quant Method : Z:\pestpcbsrv\HPCHEM1\FID\_D\methods\Aromatic EPH 101718.M  
Quant Title : GC Extractables  
QLast Update : Thu Oct 18 11:23:05 2018  
Response via : Initial Calibration  
Integrator: ChemStation 6890 Scale Mode: Large solvent peaks clipped

Volume Inj. : 1 µl  
Signal Phase : Rxi-1ms  
Signal Info : 20M x 0.18mm x 0.18µm

Compound	R.T.	Response	Conc Units
-----			
System Monitoring Compounds			
Target Compounds			
-----			

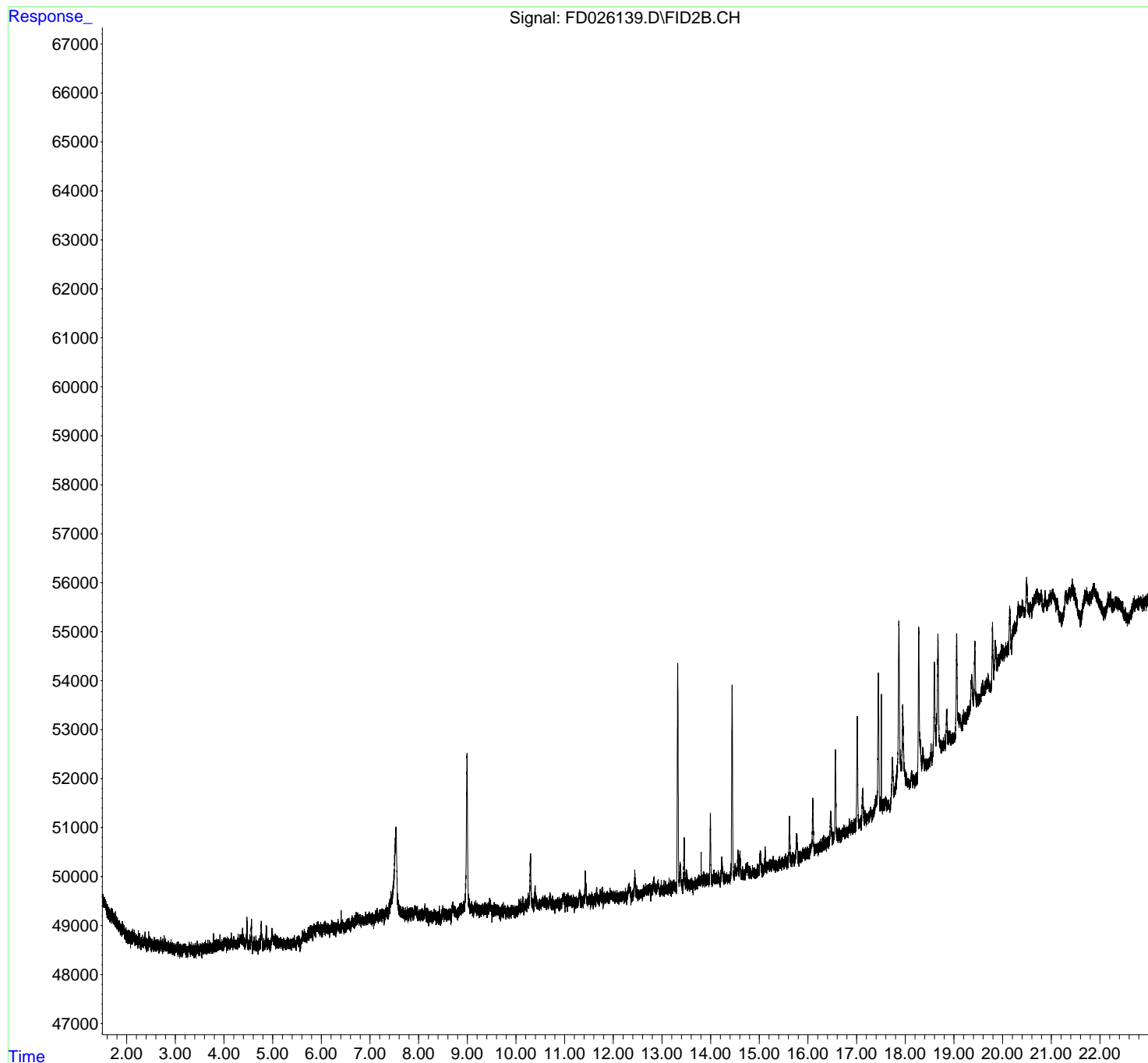
(f)=RT Delta > 1/2 Window

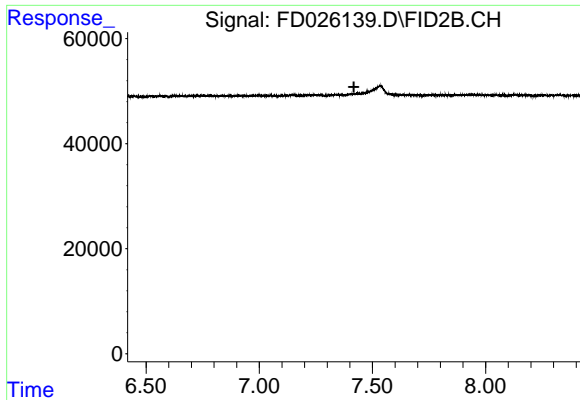
(m)=manual int.

Data Path : Z:\pestpcbsrv\HPCHEM1\FID\_D\Data\FD102618AR\  
Data File : FD026139.D  
Signal(s) : FID2B.CH  
Acq On : 26 Oct 2018 20:59  
Operator : AJ\SJ  
Sample : I.BLK  
Misc :  
ALS Vial : 51 Sample Multiplier: 1

Integration File: autoint1.e  
Quant Time: Oct 27 00:07:05 2018  
Quant Method : Z:\pestpcbsrv\HPCHEM1\FID\_D\methods\Aromatic EPH 101718.M  
Quant Title : GC Extractables  
QLast Update : Thu Oct 18 11:23:05 2018  
Response via : Initial Calibration  
Integrator: ChemStation 6890 Scale Mode: Large solvent peaks clipped

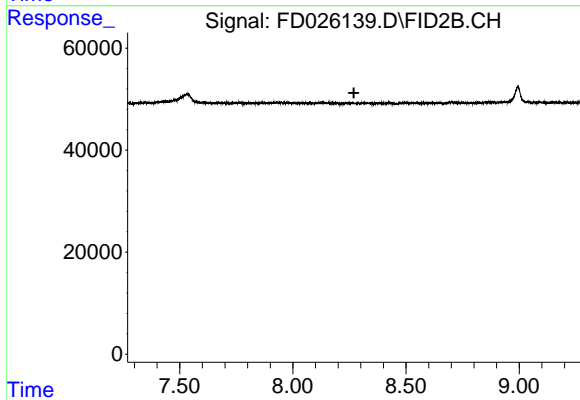
Volume Inj. : 1  $\mu$ l  
Signal Phase : Rxi-1ms  
Signal Info : 20M x 0.18mm x 0.18 $\mu$ m





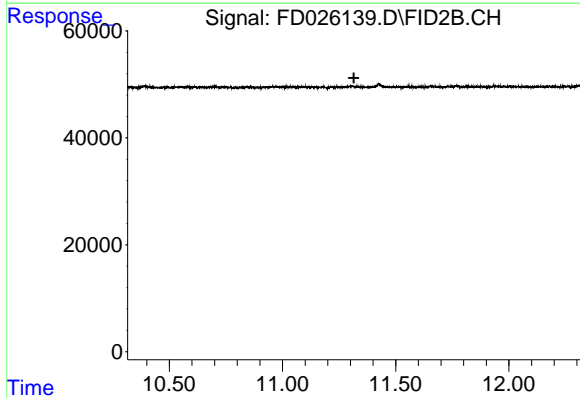
#4 2-Bromonaphthalene (SURRE)

R.T.: 0.000 min  
Exp R.T. : 7.418 min  
Response: 0  
Conc: N.D.



#6 2-Fluorobiphenyl (SURRE)

R.T.: 0.000 min  
Exp R.T. : 8.270 min  
Response: 0  
Conc: N.D.



#11 ortho-Terphenyl (SURRE)

R.T.: 0.000 min  
Exp R.T. : 11.315 min  
Response: 0  
Conc: N.D.