

Data Path : Z:\pestpcbsrv\HPCHEM1\FID_D\Data\FD102819AL\
 Data File : FD031243.D
 Signal(s) : FID2B.CH
 Acq On : 28 Oct 2019 16:16
 Operator : DD\AJ
 Sample : K5563-02
 Misc :
 ALS Vial : 56 Sample Multiplier: 1

Integration File: autoint1.e
 Quant Time: Oct 29 08:14:14 2019
 Quant Method : Z:\pestpcbsrv\HPCHEM1\FID_D\methods\Alaphatic EPH 101419.M
 Quant Title : GC Extractables
 QLast Update : Tue Oct 15 07:46:23 2019
 Response via : Initial Calibration
 Integrator: ChemStation 6890 Scale Mode: Large solvent peaks clipped

Volume Inj. : 1 ul
 Signal Phase : Rxi-1ms
 Signal Info : 20M x 0.18mm x 0.18um

Compound	R.T.	Response	Conc Units

System Monitoring Compounds			
9) S ortho-Terphenyl (SURR)	11.464	1328150	10.590 ug/ml
Spiked Amount	50.000	Recovery	= 21.18%
12) S 1-chlorooctadecane (S...	12.859	5176730	55.290 ug/ml
Spiked Amount	50.000	Recovery	= 110.58%
Target Compounds			
3) T A~Naphthalene (C11.7)	5.879	761776	6.648 ug/ml
5) T A~2-methylnaphthalene...	6.929	365897	3.174 ug/ml
6) T n-Tetradecane (C14)	8.155	463048	4.305 ug/ml
7) T n-Hexadecane (C16)	9.692	497506	4.620 ug/ml
8) T n-Octadecane (C18)	11.113	176048	1.610 ug/ml
10) T n-Eicosane (C20)	12.414	921709	8.429 ug/ml
11) T n-Heneicosane (C21)	13.038	1205894	10.972 ug/ml
13) T n-Docosane (C22)	13.631	1044057	9.547 ug/ml
14) T n-Tetracosane (C24)	14.694	8091222	74.089 ug/ml
15) T n-Hexacosane (C26)	15.714	1071182	9.898 ug/ml
16) T n-Octacosane (C28)	16.674	2553896	23.789 ug/ml
17) T n-Tricontane (C30)	17.534	1446888	13.583 ug/ml
18) T n-Dotriacontane (C32)	18.361	493064	4.790 ug/ml
19) T n-Tetratriacontane (C34)	19.137	231324	2.354 ug/ml
20) T n-Hexatriacontane (C36)	19.861	260843	2.832 ug/ml
22) T n-Tetracontane (C40)	21.418	128508	1.446 ug/ml

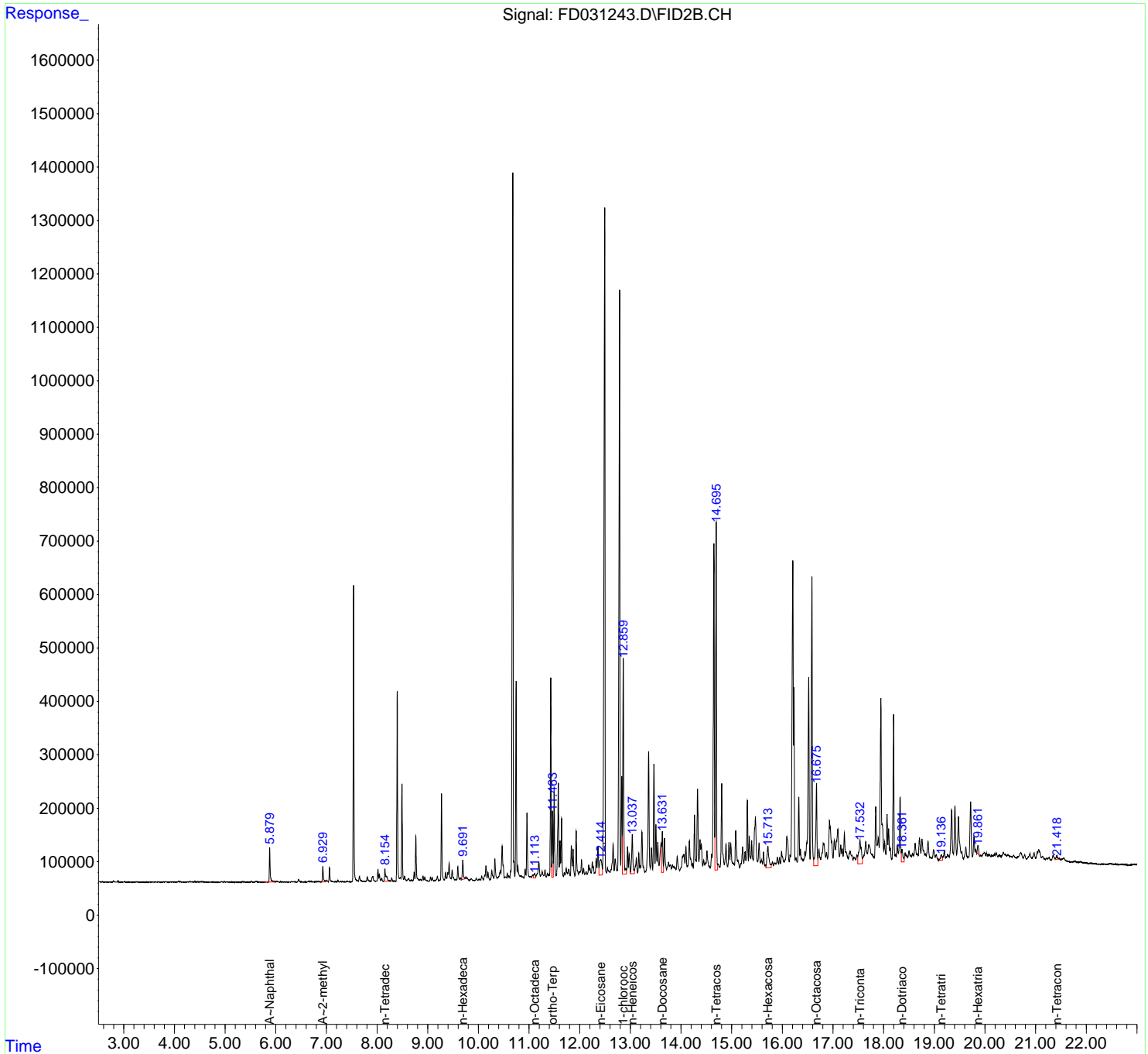
(f)=RT Delta > 1/2 Window

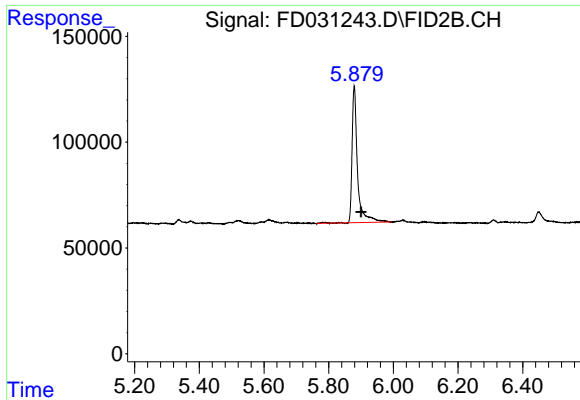
(m)=manual int.

Data Path : Z:\pestpcbsrv\HPCHEM1\FID_D\Data\FD102819AL\
 Data File : FD031243.D
 Signal(s) : FID2B.CH
 Acq On : 28 Oct 2019 16:16
 Operator : DD\AJ
 Sample : K5563-02
 Misc :
 ALS Vial : 56 Sample Multiplier: 1

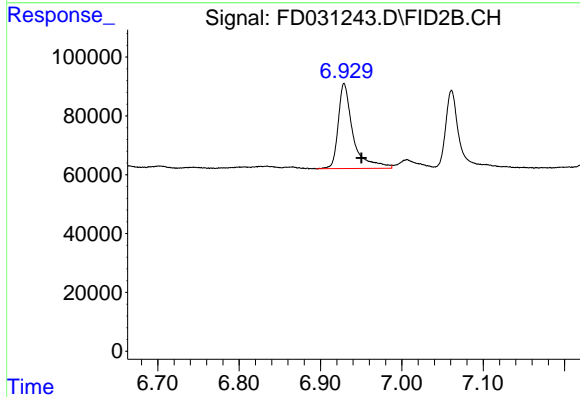
Integration File: autoint1.e
 Quant Time: Oct 29 08:14:14 2019
 Quant Method : Z:\pestpcbsrv\HPCHEM1\FID_D\methods\Alaphatic EPH 101419.M
 Quant Title : GC Extractables
 QLast Update : Tue Oct 15 07:46:23 2019
 Response via : Initial Calibration
 Integrator: ChemStation 6890 Scale Mode: Large solvent peaks clipped

Volume Inj. : 1 ul
 Signal Phase : Rxi-1ms
 Signal Info : 20M x 0.18mm x 0.18um

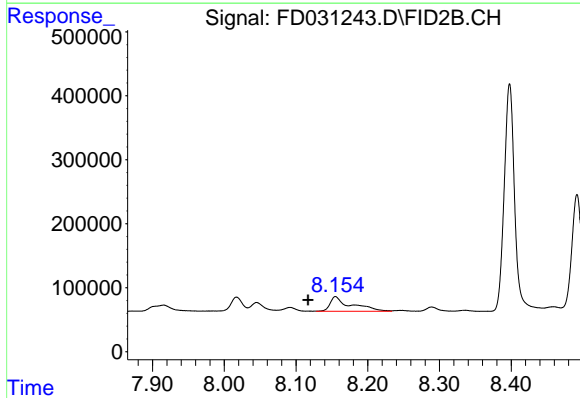




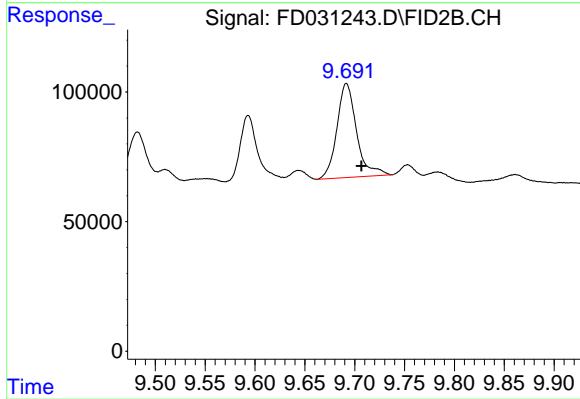
#3 A~Naphthalene (C11.7)
 R.T.: 5.879 min
 Delta R.T.: -0.021 min
 Response: 761776
 Conc: 6.65 ug/ml



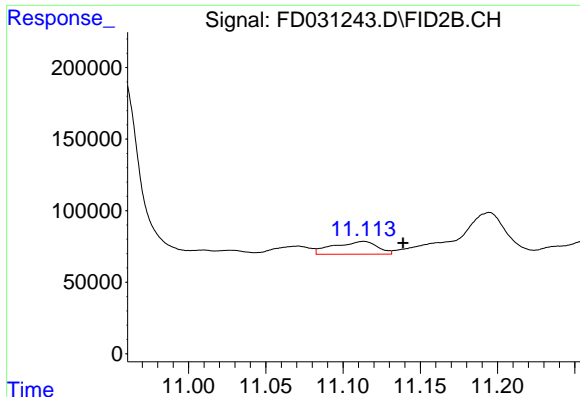
#5 A~2-methylnaphthalene (C12.89)
 R.T.: 6.929 min
 Delta R.T.: -0.021 min
 Response: 365897
 Conc: 3.17 ug/ml



#6 n-Tetradecane (C14)
 R.T.: 8.155 min
 Delta R.T.: 0.039 min
 Response: 463048
 Conc: 4.31 ug/ml

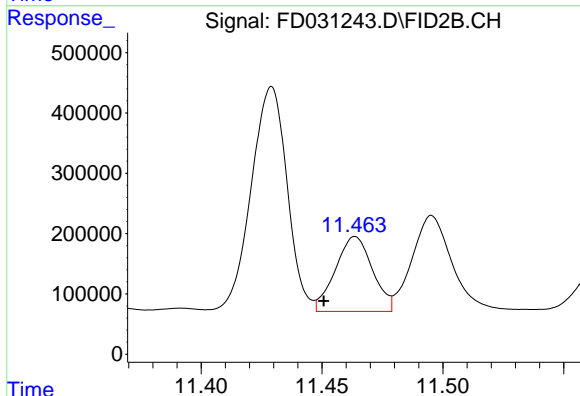


#7 n-Hexadecane (C16)
 R.T.: 9.692 min
 Delta R.T.: -0.015 min
 Response: 497506
 Conc: 4.62 ug/ml



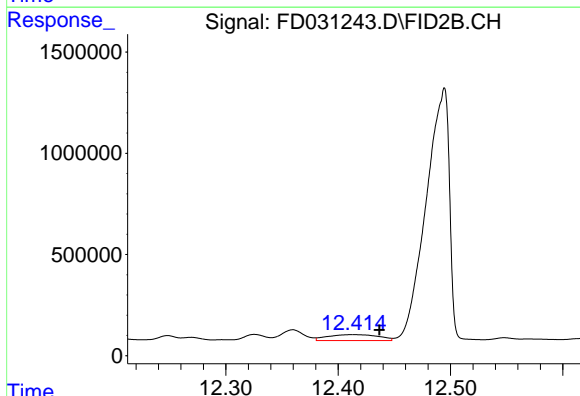
#8 n-Octadecane (C18)

R.T.: 11.113 min
Delta R.T.: -0.026 min
Response: 176048
Conc: 1.61 ug/ml



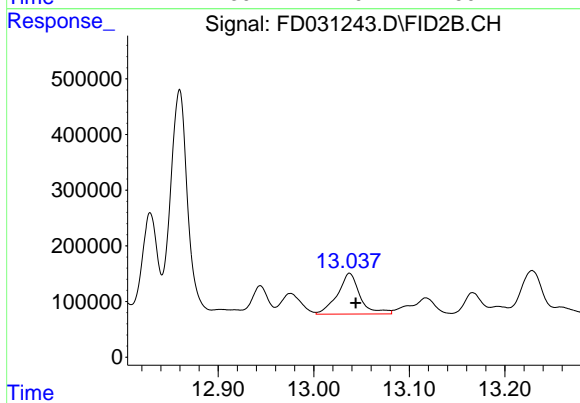
#9 ortho-Terphenyl (SURR)

R.T.: 11.464 min
Delta R.T.: 0.013 min
Response: 1328150
Conc: 10.59 ug/ml



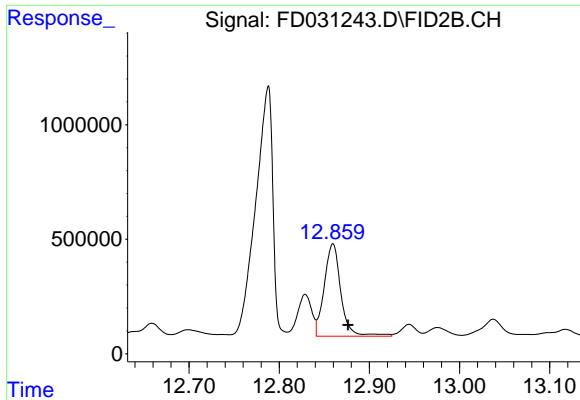
#10 n-Eicosane (C20)

R.T.: 12.414 min
Delta R.T.: -0.023 min
Response: 921709
Conc: 8.43 ug/ml



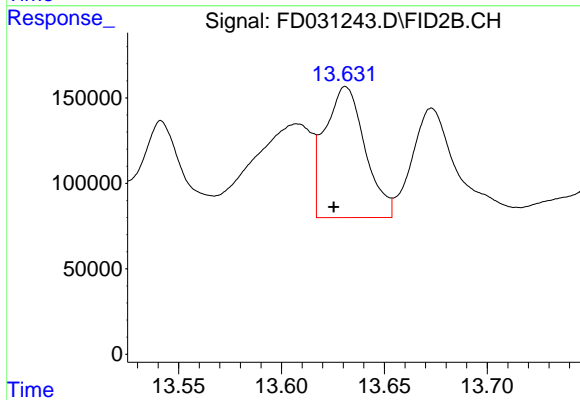
#11 n-Heneicosane (C21)

R.T.: 13.038 min
Delta R.T.: -0.007 min
Response: 1205894
Conc: 10.97 ug/ml



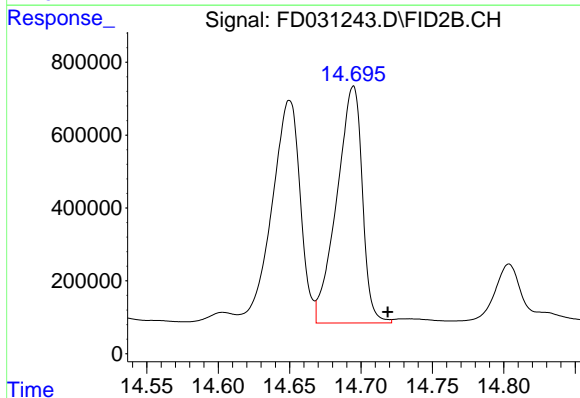
#12 1-chlorooctadecane (SURR)

R.T.: 12.859 min
Delta R.T.: -0.017 min
Response: 5176730
Conc: 55.29 ug/ml



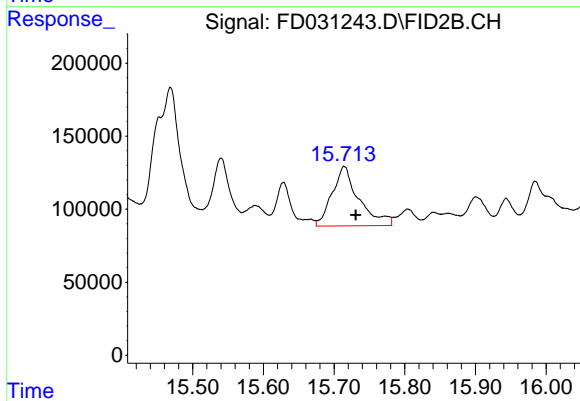
#13 n-Docosane (C22)

R.T.: 13.631 min
Delta R.T.: 0.006 min
Response: 1044057
Conc: 9.55 ug/ml



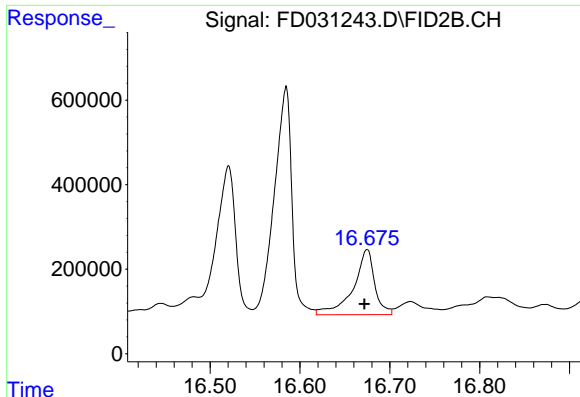
#14 n-Tetracosane (C24)

R.T.: 14.694 min
Delta R.T.: -0.025 min
Response: 8091222
Conc: 74.09 ug/ml



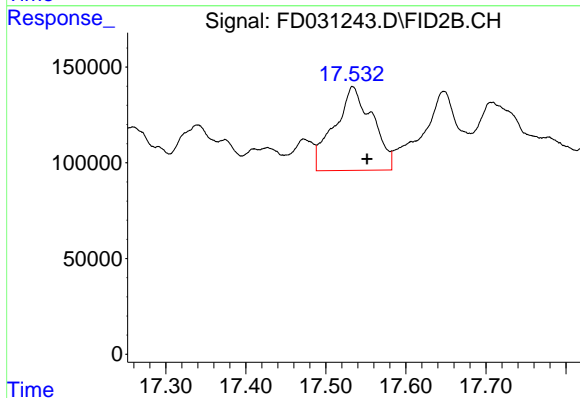
#15 n-Hexacosane (C26)

R.T.: 15.714 min
Delta R.T.: -0.016 min
Response: 1071182
Conc: 9.90 ug/ml



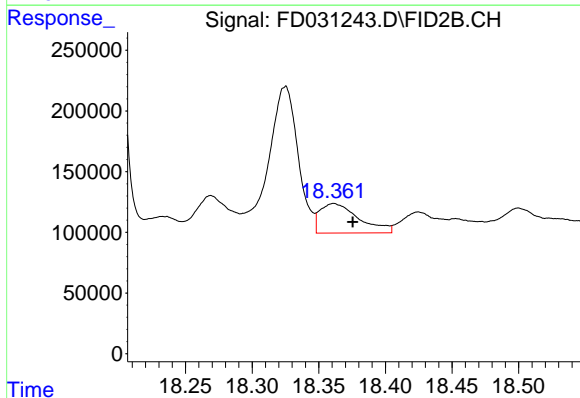
#16 n-Octacosane (C28)

R.T.: 16.674 min
Delta R.T.: 0.003 min
Response: 2553896
Conc: 23.79 ug/ml



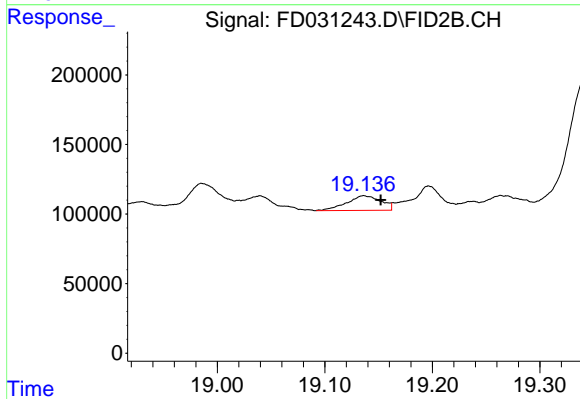
#17 n-Tricontane (C30)

R.T.: 17.534 min
Delta R.T.: -0.018 min
Response: 1446888
Conc: 13.58 ug/ml



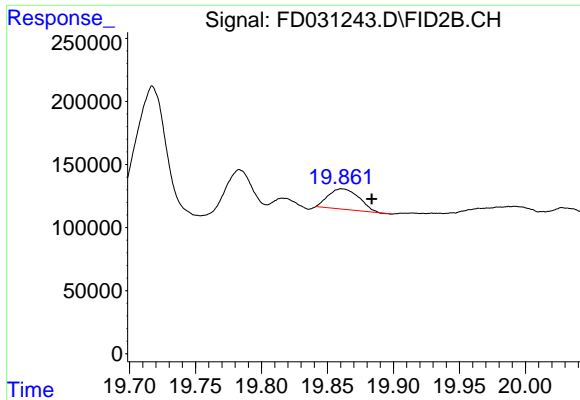
#18 n-Dotriacontane (C32)

R.T.: 18.361 min
Delta R.T.: -0.014 min
Response: 493064
Conc: 4.79 ug/ml



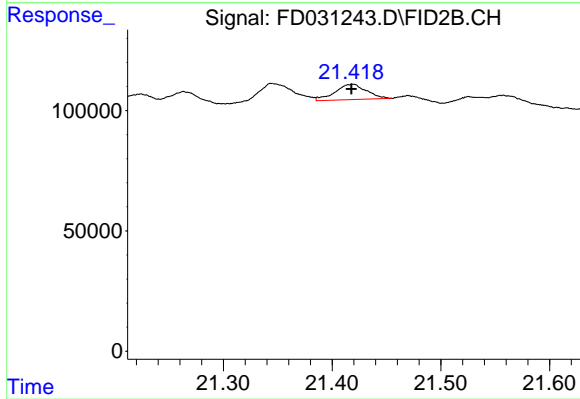
#19 n-Tetratriacontane (C34)

R.T.: 19.137 min
Delta R.T.: -0.015 min
Response: 231324
Conc: 2.35 ug/ml



#20 n-Hexatriacontane (C36)

R.T.: 19.861 min
Delta R.T.: -0.022 min
Response: 260843
Conc: 2.83 ug/ml



#22 n-Tetracontane (C40)

R.T.: 21.418 min
Delta R.T.: 0.000 min
Response: 128508
Conc: 1.45 ug/ml