

Data Path : Z:\pestpcbsrv\HPCHEM1\FID_D\Data\FD102922AR\
 Data File : FD044332.D
 Signal(s) : FID2B.ch
 Acq On : 29 Oct 2022 14:58
 Operator : YP/AJ
 Sample : PB148612BL
 Misc :
 ALS Vial : 56 Sample Multiplier: 1

Instrument :
 FID_D
 ClientSampleId :
 PB148612BL

Integration File: sample.E
 Quant Time: Oct 30 01:24:05 2022
 Quant Method : Z:\pestpcbsrv\HPCHEM1\FID_D\methods\Aromatic EPH 101322.M
 Quant Title : GC Extractables
 QLast Update : Fri Oct 14 01:33:37 2022
 Response via : Initial Calibration
 Integrator: ChemStation

Volume Inj. : 1 µl
 Signal Phase : Rxi-1ms
 Signal Info : 20M x 0.18mm x 0.18µm

Compound	R.T.	Response	Conc Units

System Monitoring Compounds			
4) S 2-Bromonaphthalene (S...	7.411	5419660	43.652 ug/ml
Spiked Amount 50.000		Recovery =	87.30%
6) S 2-Fluorobiphenyl (SURR)	8.270	3432691	45.588 ug/ml
Spiked Amount 50.000 Range 0 - 131		Recovery =	91.18%
11) S ortho-Terphenyl (SURR)	11.293	5816362	34.363 ug/ml
Spiked Amount 50.000		Recovery =	68.73%

Target Compounds

(f)=RT Delta > 1/2 Window

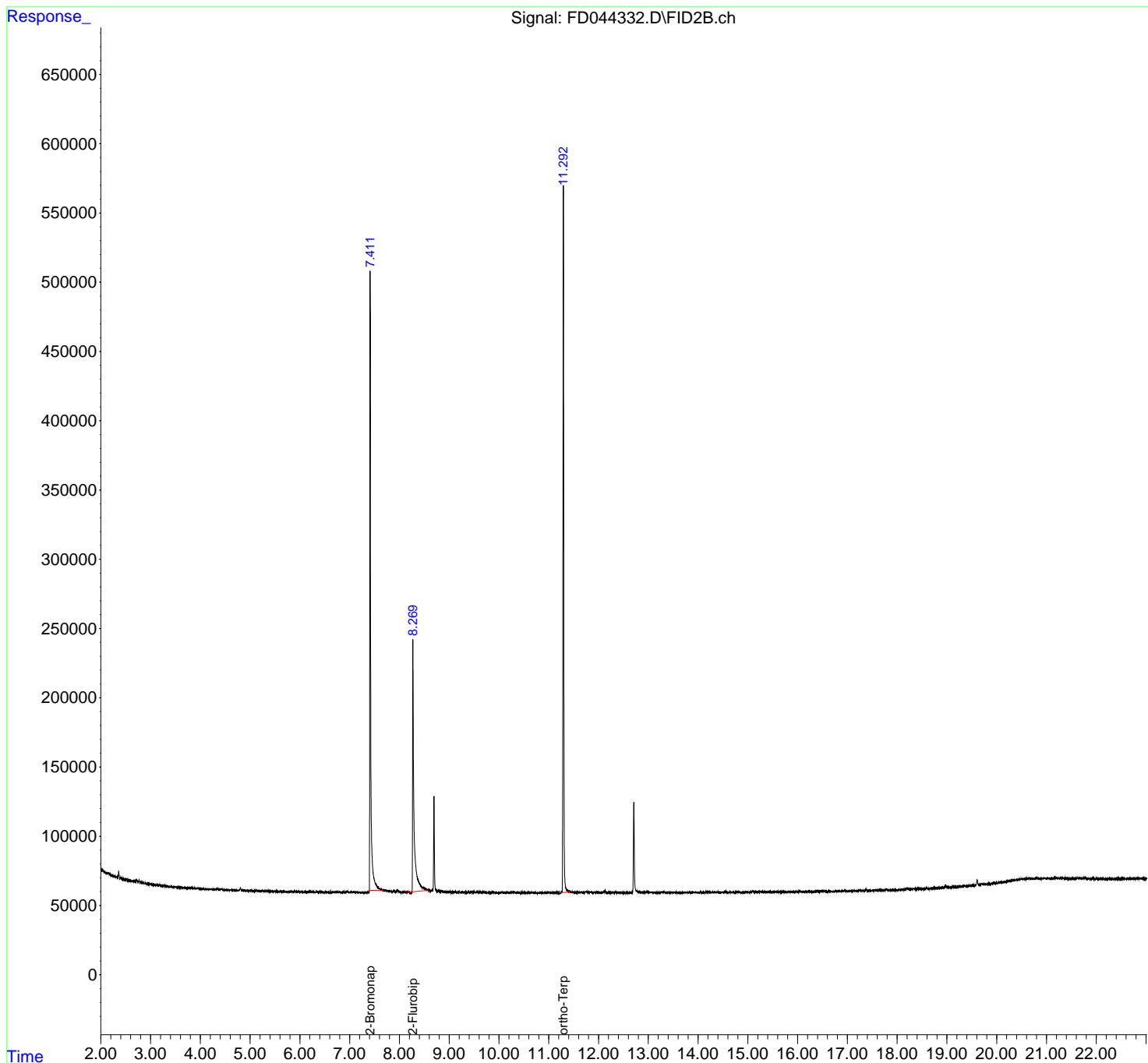
(m)=manual int.

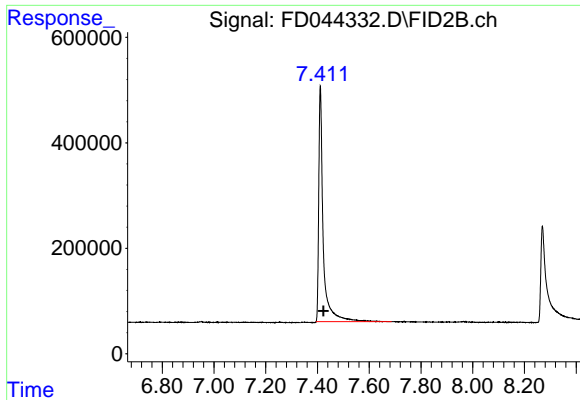
Data Path : Z:\pestpcbsrv\HPCHEM1\FID_D\Data\FD102922AR\
 Data File : FD044332.D
 Signal(s) : FID2B.ch
 Acq On : 29 Oct 2022 14:58
 Operator : YP/AJ
 Sample : PB148612BL
 Misc :
 ALS Vial : 56 Sample Multiplier: 1

Instrument :
 FID_D
 ClientSampleId :
 PB148612BL

Integration File: sample.E
 Quant Time: Oct 30 01:24:05 2022
 Quant Method : Z:\pestpcbsrv\HPCHEM1\FID_D\methods\Aromatic EPH 101322.M
 Quant Title : GC Extractables
 QLast Update : Fri Oct 14 01:33:37 2022
 Response via : Initial Calibration
 Integrator: ChemStation

Volume Inj. : 1 µl
 Signal Phase : Rxi-1ms
 Signal Info : 20M x 0.18mm x 0.18µm

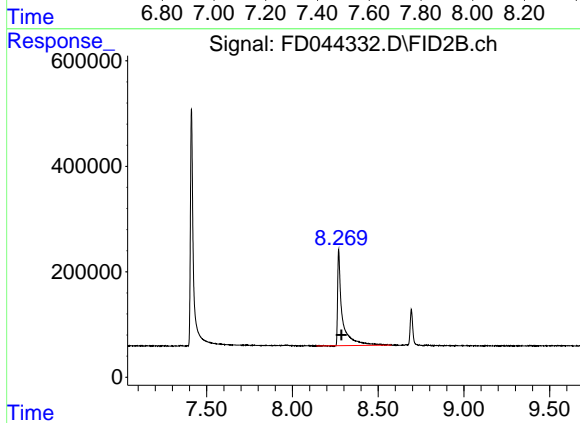




#4 2-Bromonaphthalene (SURR)

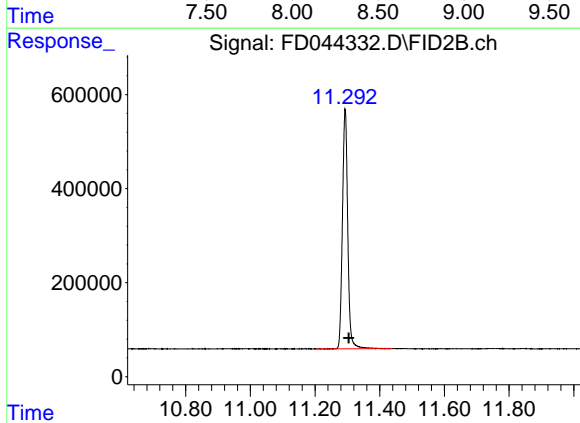
R.T.: 7.411 min
 Delta R.T.: -0.012 min
 Response: 5419660
 Conc: 43.65 ug/ml

Instrument :
 FID_D
 ClientSampleId :
 PB148612BL



#6 2-Fluorobiphenyl (SURR)

R.T.: 8.270 min
 Delta R.T.: -0.016 min
 Response: 3432691
 Conc: 45.59 ug/ml



#11 ortho-Terphenyl (SURR)

R.T.: 11.293 min
 Delta R.T.: -0.011 min
 Response: 5816362
 Conc: 34.36 ug/ml