

Data Path : Z:\pestpcbsrv\HPCHEM1\FID_D\Data\FD110118AR\
 Data File : FD026218.D
 Signal(s) : FID2B.CH
 Acq On : 01 Nov 2018 19:04
 Operator : AJ\SJ
 Sample : J5737-03
 Misc :
 ALS Vial : 55 Sample Multiplier: 1

Integration File: autoint1.e
 Quant Time: Nov 02 01:13:31 2018
 Quant Method : Z:\pestpcbsrv\HPCHEM1\FID_D\methods\Aromatic EPH 101718.M
 Quant Title : GC Extractables
 QLast Update : Thu Oct 18 11:23:05 2018
 Response via : Initial Calibration
 Integrator: ChemStation 6890 Scale Mode: Large solvent peaks clipped

Volume Inj. : 1 µl
 Signal Phase : Rxi-1ms
 Signal Info : 20M x 0.18mm x 0.18µm

Compound	R.T.	Response	Conc Units

System Monitoring Compounds			
4) S 2-Bromonaphthalene (S...	7.411	2645836	35.789 ug/ml
Spiked Amount 50.000		Recovery =	71.58%
6) S 2-Fluorobiphenyl (SURR)	8.263	1912500	37.256 ug/ml
Spiked Amount 50.000 Range 0 - 131		Recovery =	74.51%
11) S ortho-Terphenyl (SURR)	11.309	2665184	33.737 ug/ml
Spiked Amount 50.000		Recovery =	67.47%

Target Compounds

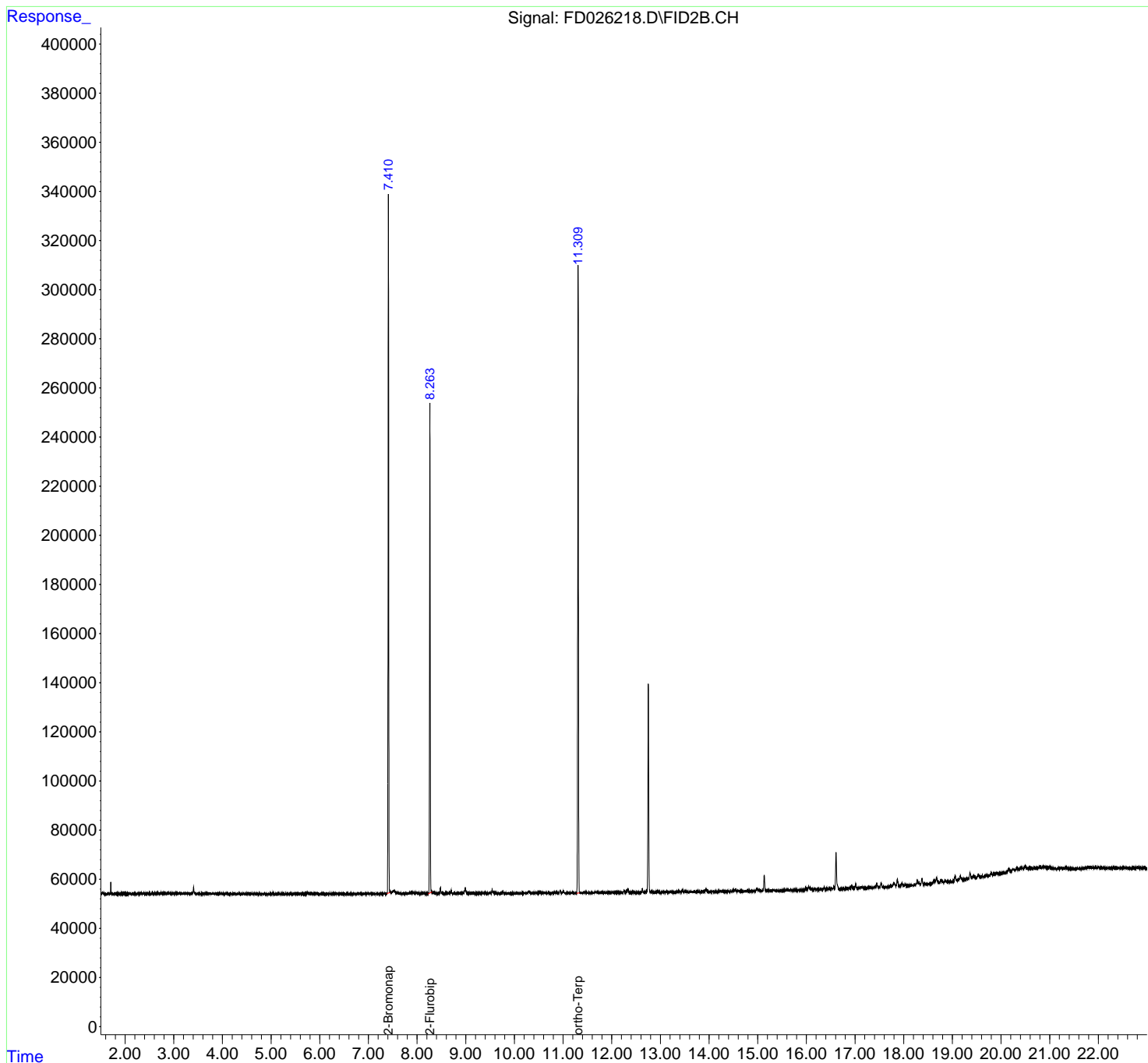
(f)=RT Delta > 1/2 Window

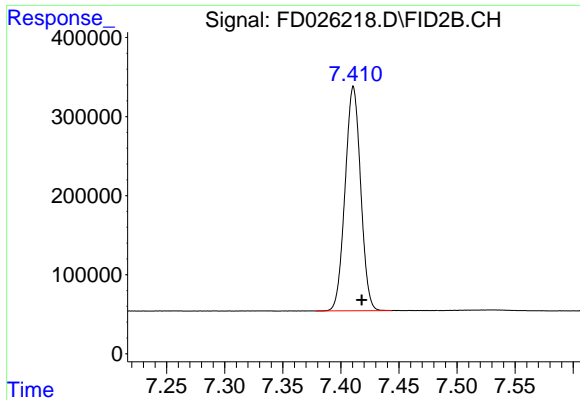
(m)=manual int.

Data Path : Z:\pestpcbsrv\HPCHEM1\FID_D\Data\FD110118AR\
Data File : FD026218.D
Signal(s) : FID2B.CH
Acq On : 01 Nov 2018 19:04
Operator : AJ\SJ
Sample : J5737-03
Misc :
ALS Vial : 55 Sample Multiplier: 1

Integration File: autoint1.e
Quant Time: Nov 02 01:13:31 2018
Quant Method : Z:\pestpcbsrv\HPCHEM1\FID_D\methods\Aromatic EPH 101718.M
Quant Title : GC Extractables
QLast Update : Thu Oct 18 11:23:05 2018
Response via : Initial Calibration
Integrator: ChemStation 6890 Scale Mode: Large solvent peaks clipped

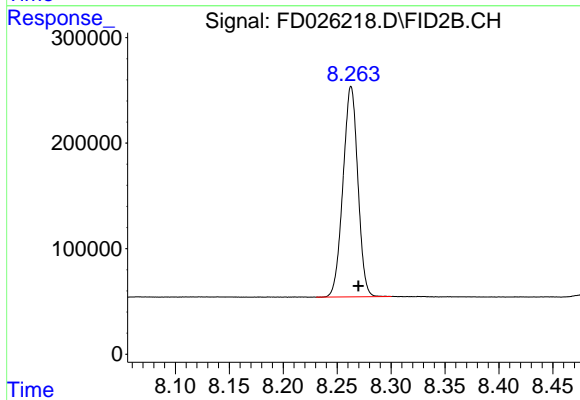
Volume Inj. : 1 µl
Signal Phase : Rxi-1ms
Signal Info : 20M x 0.18mm x 0.18µm





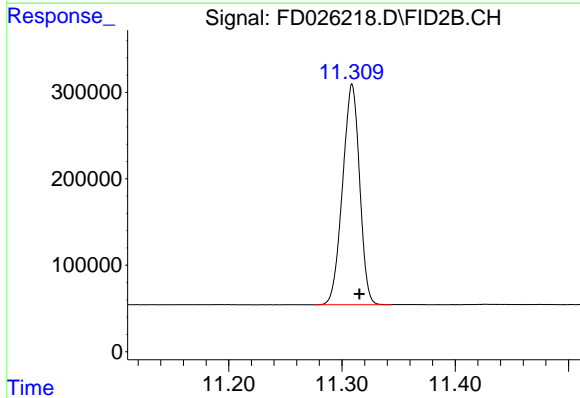
#4 2-Bromonaphthalene (SURR)

R.T.: 7.411 min
Delta R.T.: -0.007 min
Response: 2645836
Conc: 35.79 ug/ml



#6 2-Fluorobiphenyl (SURR)

R.T.: 8.263 min
Delta R.T.: -0.007 min
Response: 1912500
Conc: 37.26 ug/ml



#11 ortho-Terphenyl (SURR)

R.T.: 11.309 min
Delta R.T.: -0.006 min
Response: 2665184
Conc: 33.74 ug/ml