

Data Path : \\74.0.250.170\Terastorage\pestpcbsrv\HPCHEM1\FID\_D\Data\FD110218AL\  
 Data File : FD026272.D  
 Signal(s) : FID2B.CH  
 Acq On : 03 Nov 2018 8:18  
 Operator : AJ\SJ  
 Sample : J5759-17  
 Misc :  
 ALS Vial : 81 Sample Multiplier: 1

Integration File: sample.E  
 Quant Time: Nov 05 02:38:31 2018  
 Quant Method : Z:\pestpcbsrv\HPCHEM1\FID\_D\methods\Alaphatic EPH 101818.M  
 Quant Title : GC Extractables  
 QLast Update : Thu Oct 18 18:00:43 2018  
 Response via : Initial Calibration  
 Integrator: ChemStation 6890 Scale Mode: Large solvent peaks clipped

Volume Inj. : 1 ul  
 Signal Phase : Rxi-1ms  
 Signal Info : 20M x 0.18mm x 0.18um

Compound	R.T.	Response	Conc Units
System Monitoring Compounds			
9) S ortho-Terphenyl (SURR)	11.309	2171069	29.520 ug/ml
Spiked Amount	50.000	Recovery =	59.04%
12) S 1-chlorooctadecane (S...	12.752	1374080	25.813 ug/mlm
Spiked Amount	50.000	Recovery =	51.63%

Target Compounds

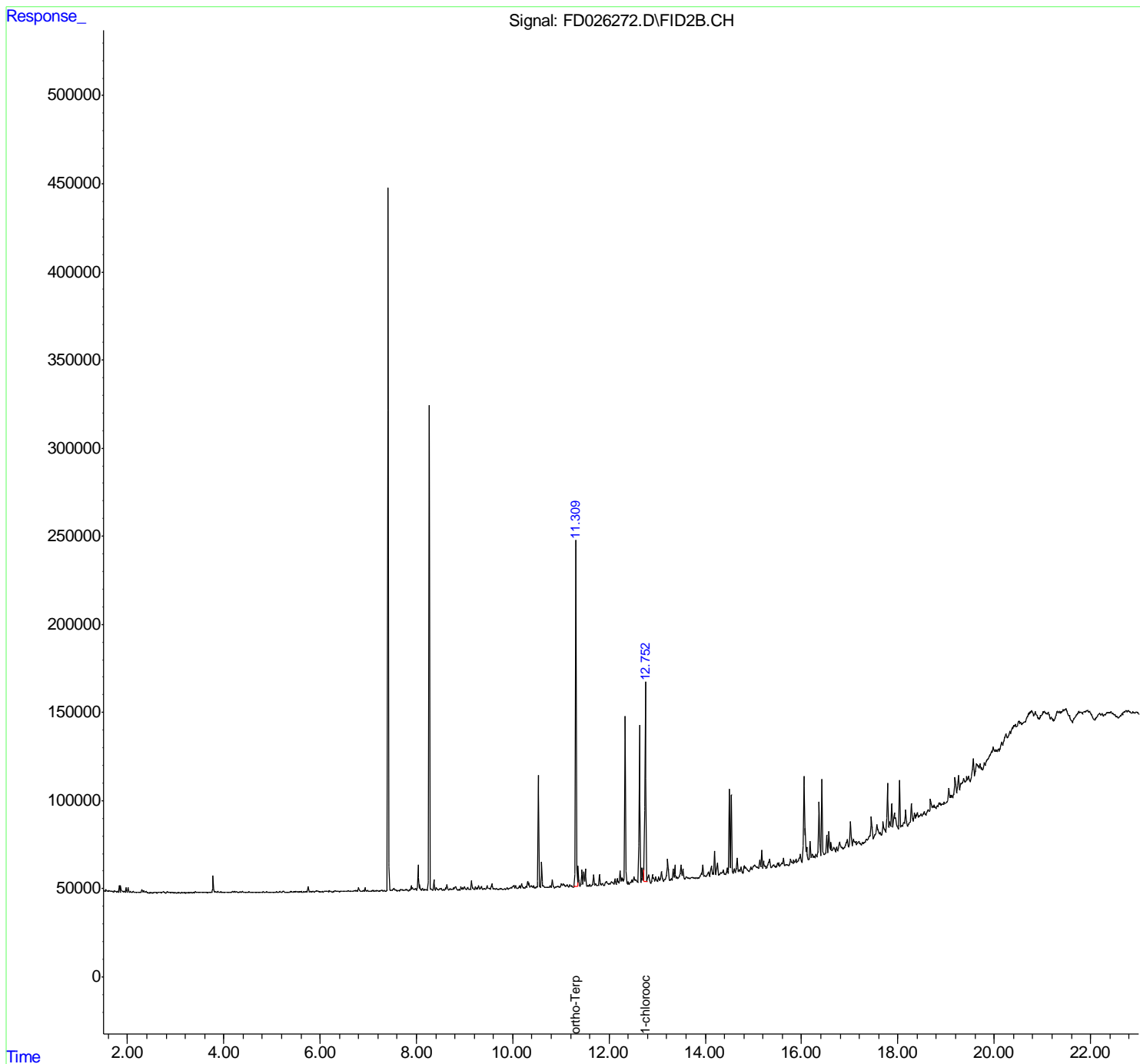
(f)=RT Delta > 1/2 Window

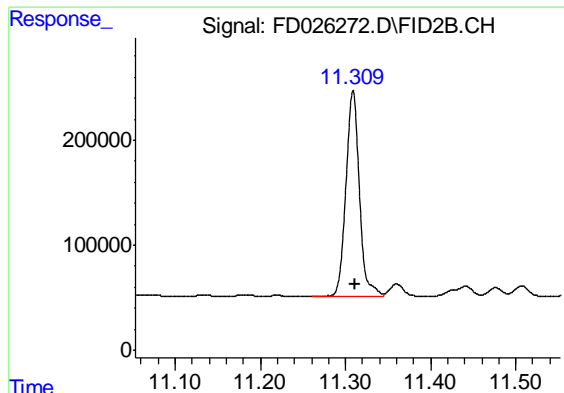
(m)=manual int.

Data Path : \\74.0.250.170\Terastorage\pestpcbsrv\HPCHEM1\FID\_D\Data\FD110218AL\  
Data File : FD026272.D  
Signal(s) : FID2B.CH  
Acq On : 03 Nov 2018 8:18  
Operator : AJ\SJ  
Sample : J5759-17  
Misc :  
ALS Vial : 81 Sample Multiplier: 1

Integration File: sample.E  
Quant Time: Nov 05 02:38:31 2018  
Quant Method : Z:\pestpcbsrv\HPCHEM1\FID\_D\methods\Alaphatic EPH 101818.M  
Quant Title : GC Extractables  
QLast Update : Thu Oct 18 18:00:43 2018  
Response via : Initial Calibration  
Integrator: ChemStation 6890 Scale Mode: Large solvent peaks clipped

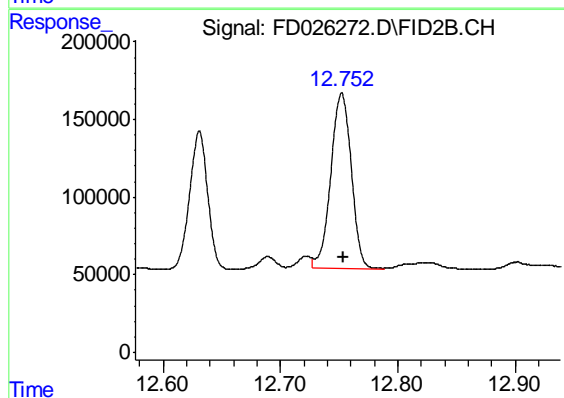
Volume Inj. : 1 ul  
Signal Phase : Rxi-1ms  
Signal Info : 20M x 0.18mm x 0.18um





#9 ortho-Terphenyl (SURR)

R.T.: 11.309 min  
Delta R.T.: -0.002 min  
Response: 2171069  
Conc: 29.52 ug/ml



#12 1-chlorooctadecane (SURR)

R.T.: 12.752 min  
Delta R.T.: -0.002 min  
Response: 1374080  
Conc: 25.81 ug/ml m