

Data Path : Z:\pestpcbsrv\HPCHEM1\FID_D\Data\FD110220AL\
 Data File : FD035249.D
 Signal(s) : FID2B.CH
 Acq On : 03 Nov 2020 00:22
 Operator : DD\AJ
 Sample : 20 PPM ALIPHATIC HC STD ICV
 Misc :
 ALS Vial : 64 Sample Multiplier: 1

Instrument :
 FID_D
 ClientSampleId :
 20 PPM ALIPHATIC HC STD ICV

Integration File: autoint1.e
 Quant Time: Nov 03 03:04:19 2020
 Quant Method : Z:\pestpcbsrv\HPCHEM1\FID_D\methods\Alaphatic EPH 110220.M
 Quant Title : GC Extractables
 QLast Update : Tue Nov 03 03:02:29 2020
 Response via : Initial Calibration
 Integrator: ChemStation 6890 Scale Mode: Large solvent peaks clipped

Volume Inj. : 1 ul
 Signal Phase : Rxi-1ms
 Signal Info : 20M x 0.18mm x 0.18um

Compound	R.T.	Response	Conc Units

System Monitoring Compounds			
9) S ortho-Terphenyl (SURR)	11.544	2538486	19.514 ug/ml
Spiked Amount	50.000	Recovery	= 39.03%
12) S 1-chlorooctadecane (S...	12.975	2038245	19.557 ug/ml
Spiked Amount	50.000	Recovery	= 39.11%
Target Compounds			
1) T n-Nonane (C9)	3.335	2198554	19.525 ug/ml
2) T n-Decane (C10)	4.398	2211058	19.566 ug/ml
3) T A~Naphthalene (C11.7)	5.978	2413897	19.738 ug/ml
4) T n-Dodecane (C12)	6.409	2256778	19.520 ug/ml
5) T A~2-methylnaphthalene...	7.030	2449947	19.775 ug/ml
6) T n-Tetradecane (C14)	8.197	2249971	19.537 ug/ml
7) T n-Hexadecane (C16)	9.792	2237632	19.583 ug/ml
8) T n-Octadecane (C18)	11.228	2355613	19.520 ug/ml
10) T n-Eicosane (C20)	12.533	2391559	19.502 ug/ml
11) T n-Heneicosane (C21)	13.142	2399744	19.518 ug/ml
13) T n-Docosane (C22)	13.726	2405041	19.504 ug/ml
14) T n-Tetracosane (C24)	14.825	2415489	19.524 ug/ml
15) T n-Hexacosane (C26)	15.841	2403549	19.527 ug/ml
16) T n-Octacosane (C28)	16.785	2408477	19.562 ug/ml
17) T n-Tricontane (C30)	17.669	2371382	19.622 ug/ml
18) T n-Dotriacontane (C32)	18.496	2203361	19.596 ug/ml
19) T n-Tetratriacontane (C34)	19.275	2058675	19.614 ug/ml
20) T n-Hexatriacontane (C36)	20.012	1894691	19.779 ug/ml
21) T n-Octatriacontane (C38)	20.734	1739889	19.588 ug/ml
22) T n-Tetracontane (C40)	21.615	1704189	19.418 ug/ml

(f)=RT Delta > 1/2 Window

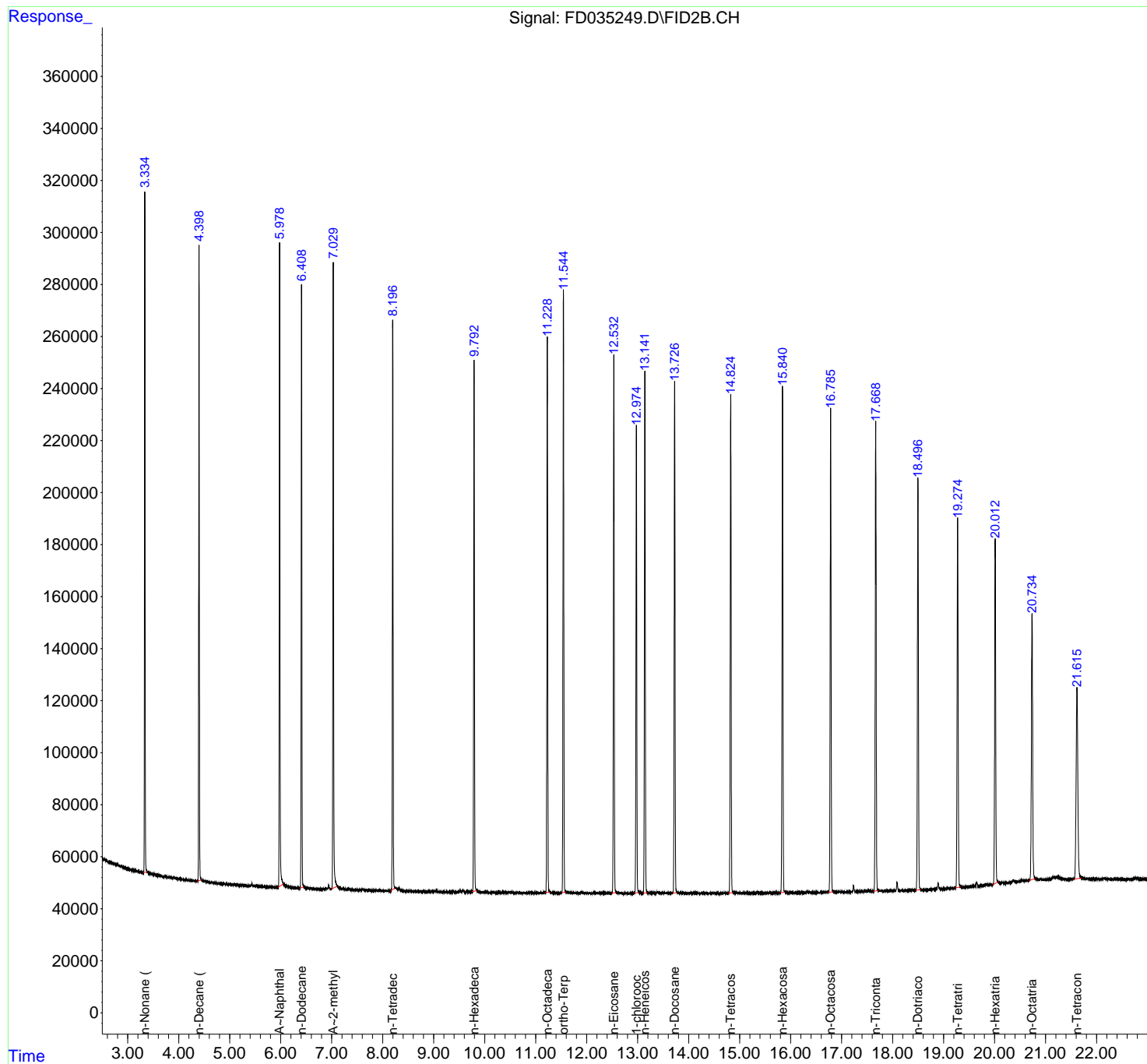
(m)=manual int.

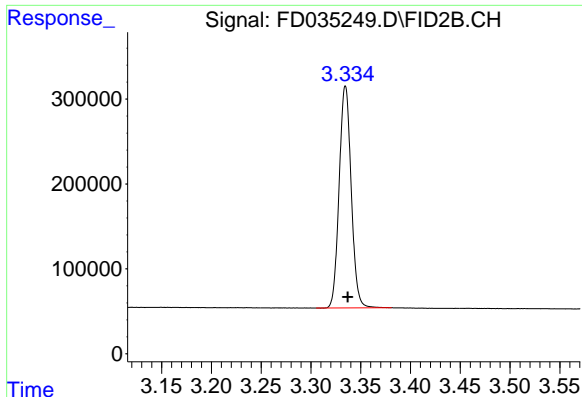
Data Path : Z:\pestpcbsrv\HPCHEM1\FID_D\Data\FD110220AL\
Data File : FD035249.D
Signal(s) : FID2B.CH
Acq On : 03 Nov 2020 00:22
Operator : DD\AJ
Sample : 20 PPM ALIPHATIC HC STD ICV
Misc :
ALS Vial : 64 Sample Multiplier: 1

Instrument :
FID_D
Client Sampled :
20 PPM ALIPHATIC HC STD ICV

Integration File: autoint1.e
Quant Time: Nov 03 03:04:19 2020
Quant Method : Z:\pestpcbsrv\HPCHEM1\FID_D\methods\Aliphatic EPH 110220.M
Quant Title : GC Extractables
QLast Update : Tue Nov 03 03:02:29 2020
Response via : Initial Calibration
Integrator: ChemStation 6890 Scale Mode: Large solvent peaks clipped

Volume Inj. : 1 ul
Signal Phase : Rxi-1ms
Signal Info : 20M x 0.18mm x 0.18um

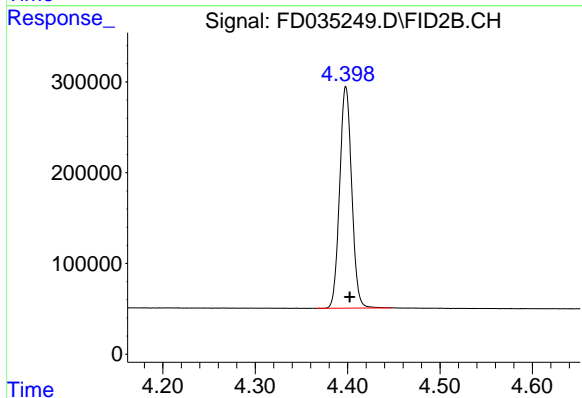




#1 n-Nonane (C9)

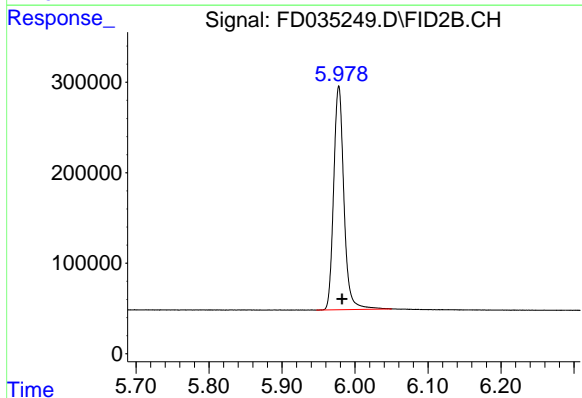
R.T.: 3.335 min
Delta R.T.: -0.002 min
Response: 2198554
Conc: 19.52 ug/ml

Instrument :
FID_D
ClientSampleId :
20 PPM ALIPHATIC HC STD ICV



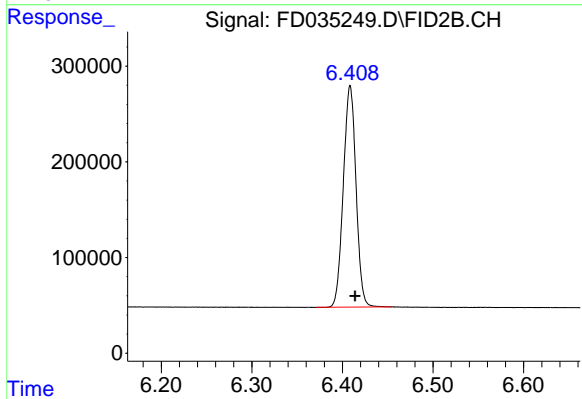
#2 n-Decane (C10)

R.T.: 4.398 min
Delta R.T.: -0.004 min
Response: 2211058
Conc: 19.57 ug/ml



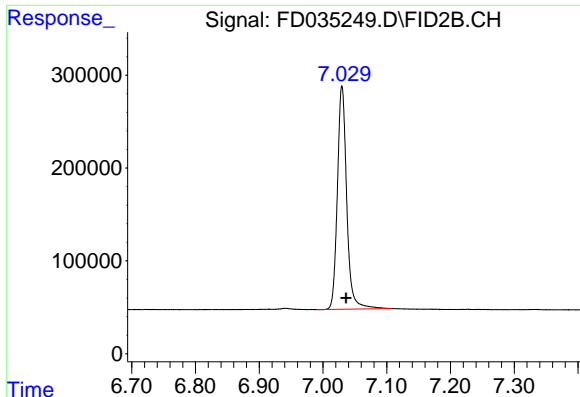
#3 A-Naphthalene (C11.7)

R.T.: 5.978 min
Delta R.T.: -0.005 min
Response: 2413897
Conc: 19.74 ug/ml



#4 n-Dodecane (C12)

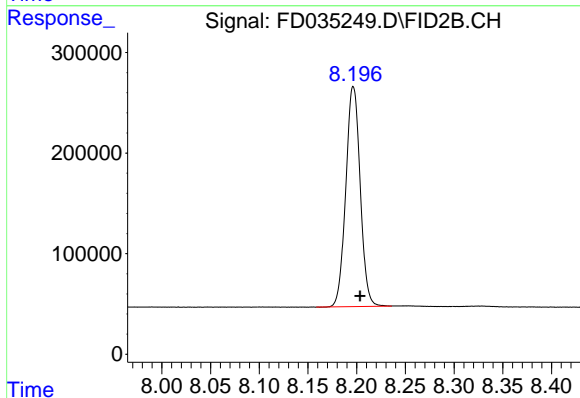
R.T.: 6.409 min
Delta R.T.: -0.005 min
Response: 2256778
Conc: 19.52 ug/ml



#5 A~2-methylnaphthalene (C12.89)

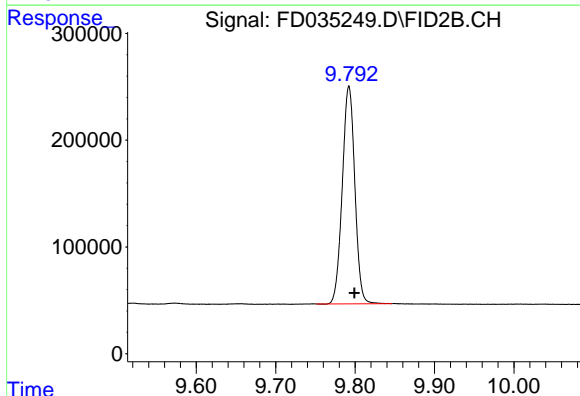
R.T.: 7.030 min
Delta R.T.: -0.007 min
Response: 2449947
Conc: 19.77 ug/ml

Instrument :
FID_D
ClientSampleId :
20 PPM ALIPHATIC HC STD ICV



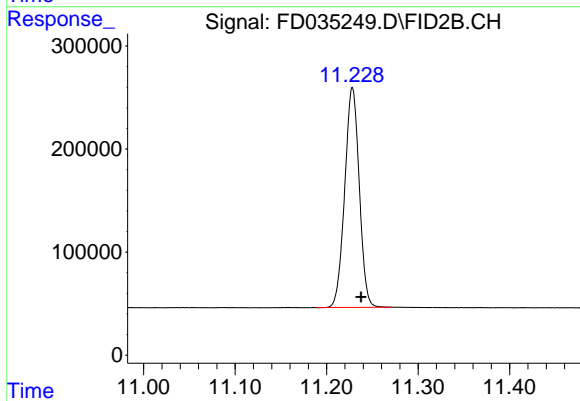
#6 n-Tetradecane (C14)

R.T.: 8.197 min
Delta R.T.: -0.007 min
Response: 2249971
Conc: 19.54 ug/ml



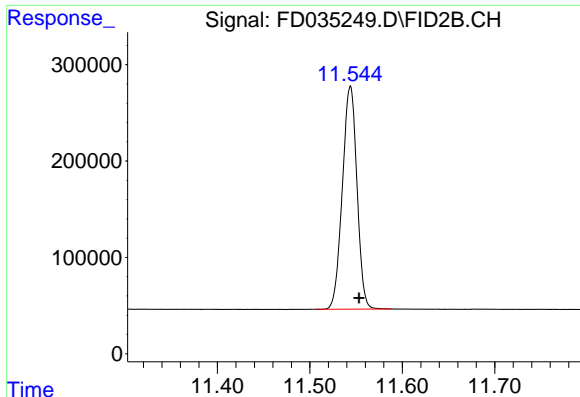
#7 n-Hexadecane (C16)

R.T.: 9.792 min
Delta R.T.: -0.007 min
Response: 2237632
Conc: 19.58 ug/ml



#8 n-Octadecane (C18)

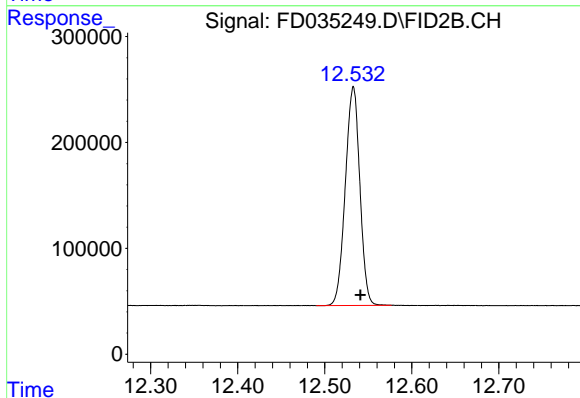
R.T.: 11.228 min
Delta R.T.: -0.009 min
Response: 2355613
Conc: 19.52 ug/ml



#9 ortho-Terphenyl (SURR)

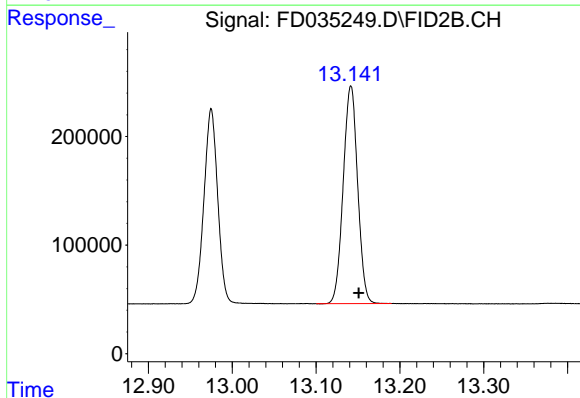
R.T.: 11.544 min
 Delta R.T.: -0.009 min
 Response: 2538486
 Conc: 19.51 ug/ml

Instrument :
 FID_D
 ClientSampled :
 20 PPM ALIPHATIC HC STD ICV



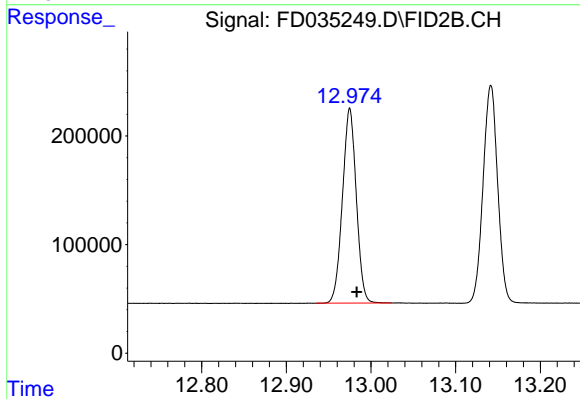
#10 n-Eicosane (C20)

R.T.: 12.533 min
 Delta R.T.: -0.008 min
 Response: 2391559
 Conc: 19.50 ug/ml



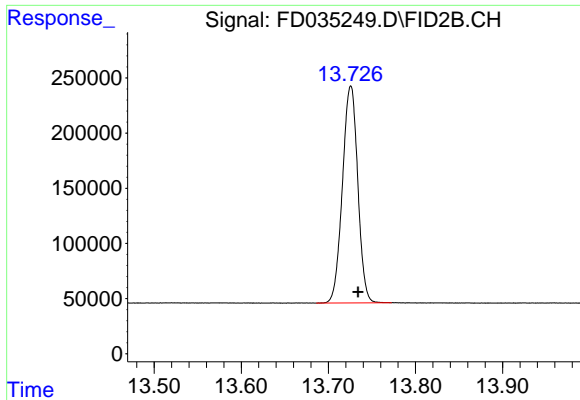
#11 n-Heneicosane (C21)

R.T.: 13.142 min
 Delta R.T.: -0.009 min
 Response: 2399744
 Conc: 19.52 ug/ml



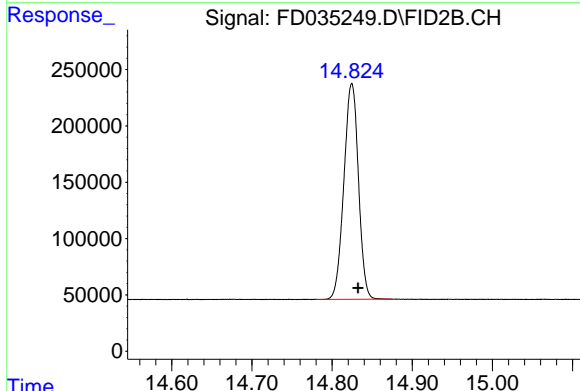
#12 1-chlorooctadecane (SURR)

R.T.: 12.975 min
 Delta R.T.: -0.008 min
 Response: 2038245
 Conc: 19.56 ug/ml

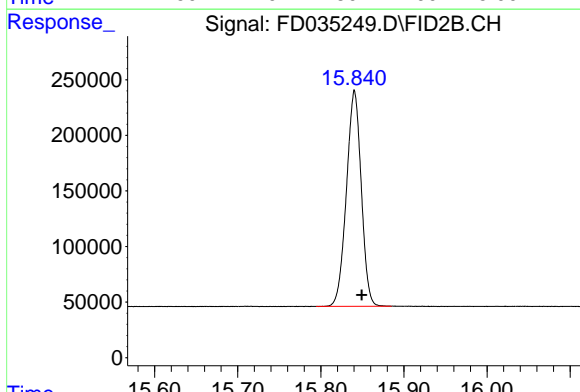


#13 n-Docosane (C22)
R.T.: 13.726 min
Delta R.T.: -0.008 min
Response: 2405041
Conc: 19.50 ug/ml

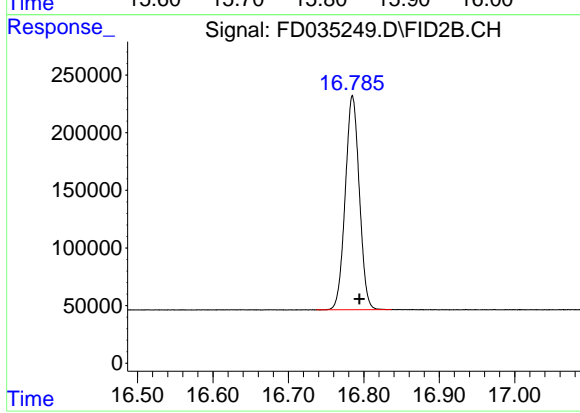
Instrument :
FID_D
ClientSampleId :
20 PPM ALIPHATIC HC STD ICV



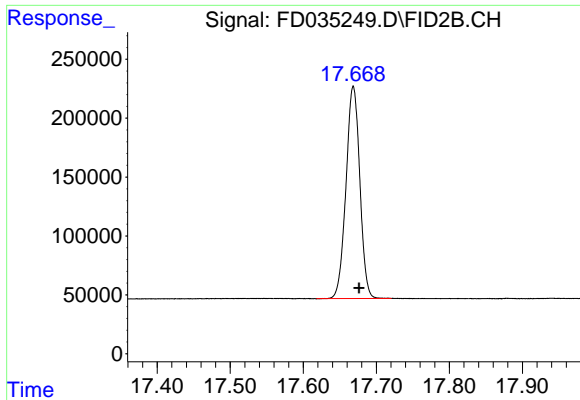
#14 n-Tetracosane (C24)
R.T.: 14.825 min
Delta R.T.: -0.008 min
Response: 2415489
Conc: 19.52 ug/ml



#15 n-Hexacosane (C26)
R.T.: 15.841 min
Delta R.T.: -0.009 min
Response: 2403549
Conc: 19.53 ug/ml

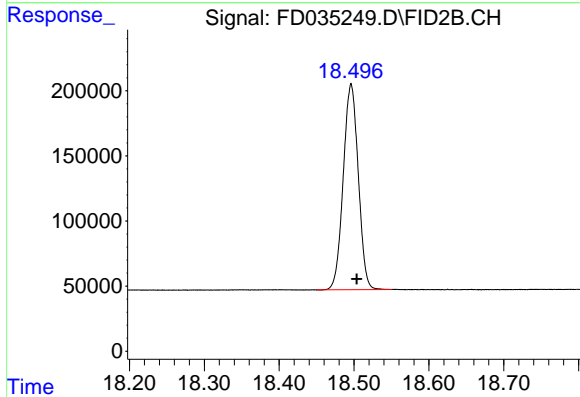


#16 n-Octacosane (C28)
R.T.: 16.785 min
Delta R.T.: -0.009 min
Response: 2408477
Conc: 19.56 ug/ml

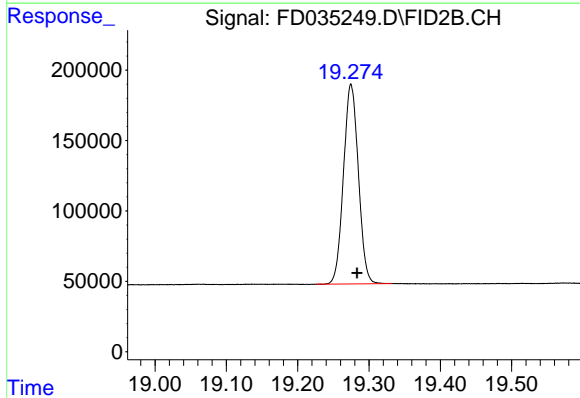


#17 n-Tricontane (C30)
R.T.: 17.669 min
Delta R.T.: -0.008 min
Response: 2371382
Conc: 19.62 ug/ml

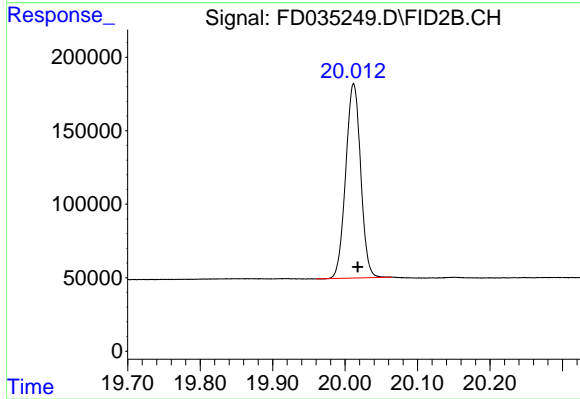
Instrument :
FID_D
ClientSampleId :
20 PPM ALIPHATIC HC STD ICV



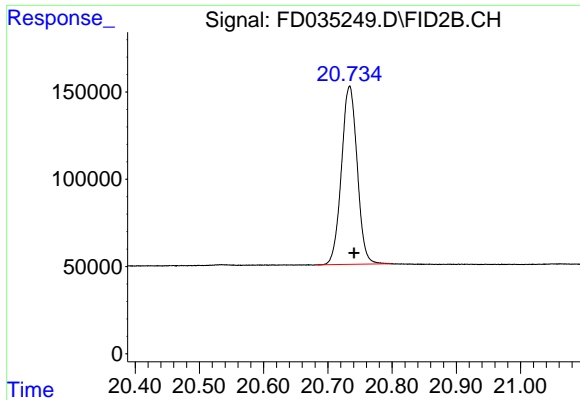
#18 n-Dotriacontane (C32)
R.T.: 18.496 min
Delta R.T.: -0.007 min
Response: 2203361
Conc: 19.60 ug/ml



#19 n-Tetratriacontane (C34)
R.T.: 19.275 min
Delta R.T.: -0.009 min
Response: 2058675
Conc: 19.61 ug/ml



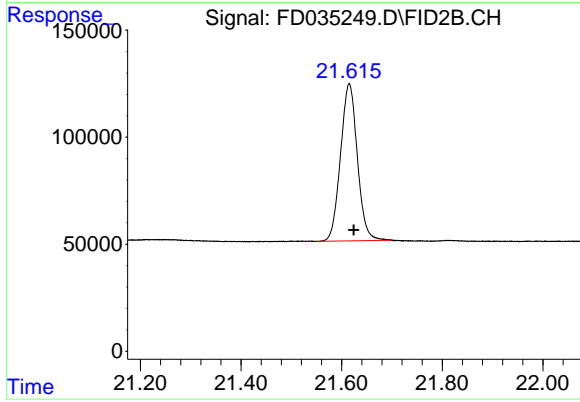
#20 n-Hexatriacontane (C36)
R.T.: 20.012 min
Delta R.T.: -0.006 min
Response: 1894691
Conc: 19.78 ug/ml



#21 n-Octatriacontane (C38)

R.T.: 20.734 min
Delta R.T.: -0.007 min
Response: 1739889
Conc: 19.59 ug/ml

Instrument :
FID_D
ClientSampleId :
20 PPM ALIPHATIC HC STD ICV



#22 n-Tetracontane (C40)

R.T.: 21.615 min
Delta R.T.: -0.009 min
Response: 1704189
Conc: 19.42 ug/ml