

Data Path : Z:\pestpcbsrv\HPCHEM1\FID_D\Data\FD110424AR\
 Data File : FD048651.D
 Signal(s) : FID2B.ch
 Acq On : 04 Nov 2024 22:42
 Operator : YP/AJ
 Sample : P4620-22
 Misc :
 ALS Vial : 66 Sample Multiplier: 1

Instrument :
 FID_D
 ClientSampleId :

Integration File: autoint1.e
 Quant Time: Nov 05 02:08:55 2024
 Quant Method : Z:\pestpcbsrv\HPCHEM1\FID_D\methods\Aromatic EPH 102324.M
 Quant Title : GC Extractables
 QLast Update : Wed Oct 23 18:14:59 2024
 Response via : Initial Calibration
 Integrator: ChemStation

Volume Inj. : 1 µl
 Signal Phase : Rxi-1ms
 Signal Info : 20M x 0.18mm x 0.18µm

Compound	R.T.	Response	Conc Units

System Monitoring Compounds			
4) S 2-Bromonaphthalene (S...	7.370	6486550	42.737 ug/ml
Spiked Amount 50.000		Recovery =	85.47%
6) S 2-Fluorobiphenyl (SURR)	8.220	4270030	43.487 ug/ml
Spiked Amount 50.000 Range 0 - 131		Recovery =	86.97%
11) S ortho-Terphenyl (SURR)	11.255	5998394	35.214 ug/ml
Spiked Amount 50.000		Recovery =	70.43%
Target Compounds			
12) T Fluoranthene (C21.85)	12.313	58400	0.355 ug/ml
19) T Indeno[1,2,3-cd]pyren...	17.736	208235	1.596 ug/ml
20) T Dibenz[a,h]anthracene...	17.807	67459	0.415 ug/ml

(f)=RT Delta > 1/2 Window

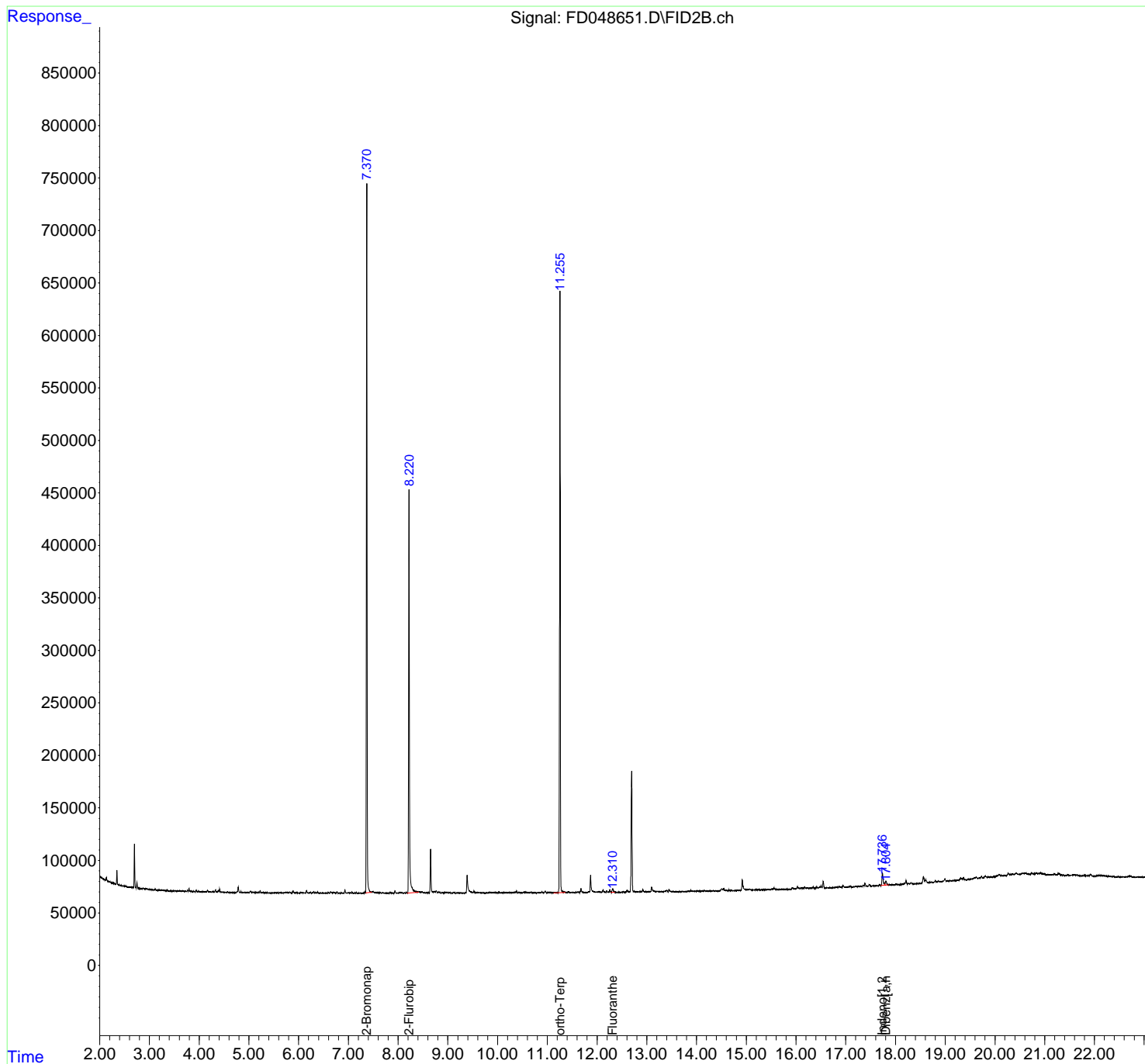
(m)=manual int.

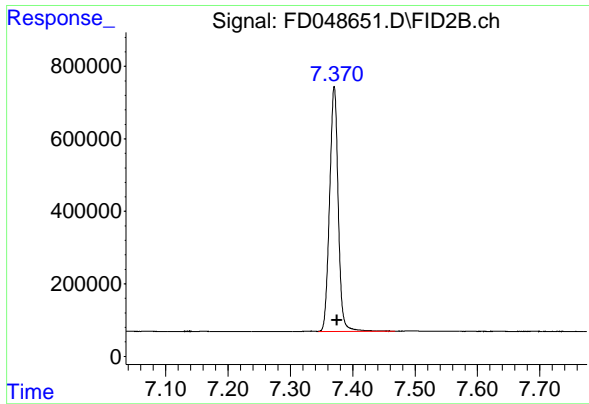
Data Path : Z:\pestpcbsrv\HPCHEM1\FID_D\Data\FD110424AR\
 Data File : FD048651.D
 Signal(s) : FID2B.ch
 Acq On : 04 Nov 2024 22:42
 Operator : YP/AJ
 Sample : P4620-22
 Misc :
 ALS Vial : 66 Sample Multiplier: 1

Instrument :
 FID_D
 ClientSampleId :

Integration File: autoint1.e
 Quant Time: Nov 05 02:08:55 2024
 Quant Method : Z:\pestpcbsrv\HPCHEM1\FID_D\methods\Aromatic EPH 102324.M
 Quant Title : GC Extractables
 QLast Update : Wed Oct 23 18:14:59 2024
 Response via : Initial Calibration
 Integrator: ChemStation

Volume Inj. : 1 µl
 Signal Phase : Rxi-1ms
 Signal Info : 20M x 0.18mm x 0.18µm

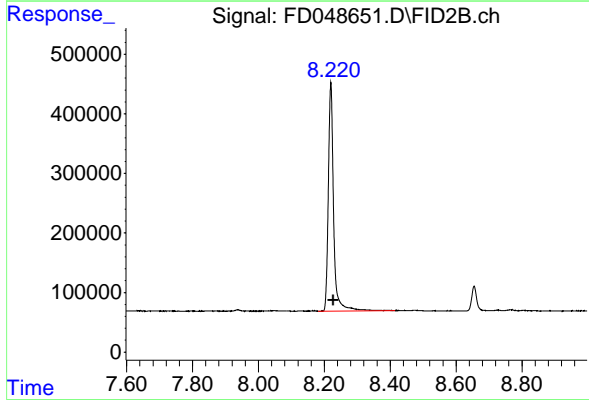




#4 2-Bromonaphthalene (SURR)

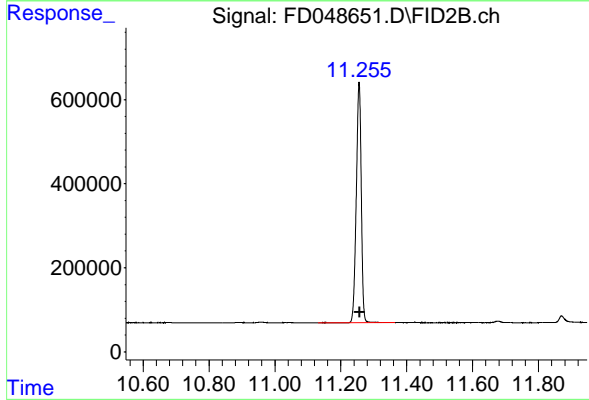
R.T.: 7.370 min
 Delta R.T.: -0.004 min
 Response: 6486550
 Conc: 42.74 ug/ml

Instrument :
 FID_D
 ClientSampleId :



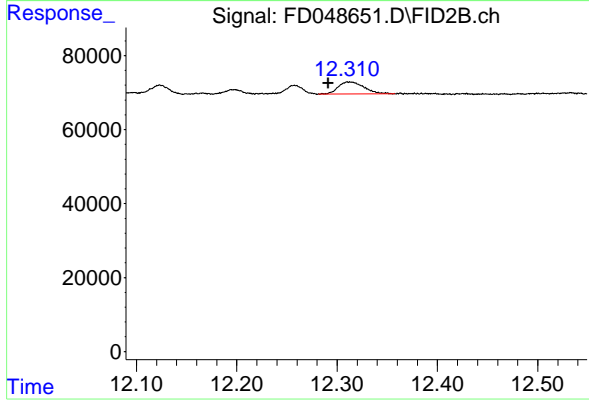
#6 2-Fluorobiphenyl (SURR)

R.T.: 8.220 min
 Delta R.T.: -0.008 min
 Response: 4270030
 Conc: 43.49 ug/ml



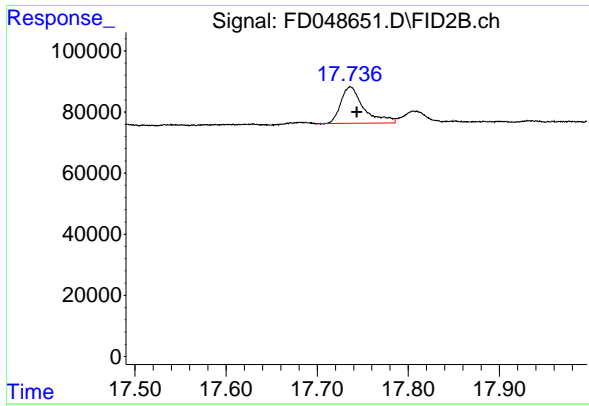
#11 ortho-Terphenyl (SURR)

R.T.: 11.255 min
 Delta R.T.: -0.002 min
 Response: 5998394
 Conc: 35.21 ug/ml



#12 Fluoranthene (C21.85)

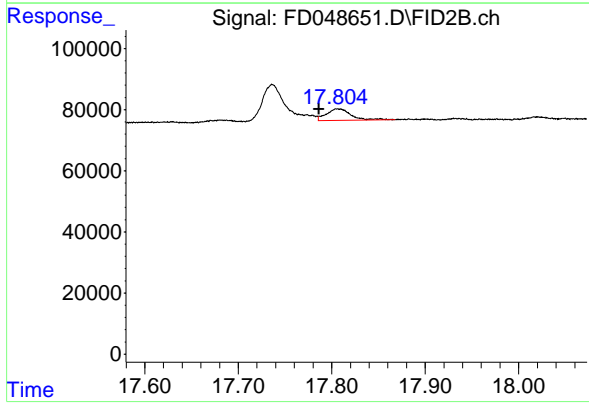
R.T.: 12.313 min
 Delta R.T.: 0.021 min
 Response: 58400
 Conc: 0.35 ug/ml



#19 Indeno[1,2,3-cd]pyrene (C35.01)

R.T.: 17.736 min
 Delta R.T.: -0.007 min
 Response: 208235
 Conc: 1.60 ug/ml

Instrument :
 FID_D
 ClientSampleId :



#20 Dibenz[a,h]anthracene (C30.36)

R.T.: 17.807 min
 Delta R.T.: 0.021 min
 Response: 67459
 Conc: 0.41 ug/ml