

Data Path : Z:\pestpcbsrv\HPCHEM1\FID\_D\Data\FD110518AL\  
 Data File : FD026361.D  
 Signal(s) : FID2B.CH  
 Acq On : 06 Nov 2018 11:18  
 Operator : AJ\SJ  
 Sample : 20 PPM ALIPHATIC HC STD  
 Misc :  
 ALS Vial : 66 Sample Multiplier: 1

Integration File: autoint1.e  
 Quant Time: Nov 06 11:52:15 2018  
 Quant Method : Z:\pestpcbsrv\HPCHEM1\FID\_D\methods\Alaphatic EPH 101818.M  
 Quant Title : GC Extractables  
 QLast Update : Thu Oct 18 18:00:43 2018  
 Response via : Initial Calibration  
 Integrator: ChemStation 6890 Scale Mode: Large solvent peaks clipped

Volume Inj. : 1 ul  
 Signal Phase : Rxi-1ms  
 Signal Info : 20M x 0.18mm x 0.18um

Compound	R.T.	Response	Conc Units
-----			
System Monitoring Compounds			
9) S ortho-Terphenyl (SURR)	11.298	1686120	22.926 ug/ml
Spiked Amount	50.000	Recovery	= 45.85%
12) S 1-chlorooctadecane (S...	12.742	1265638	23.776 ug/ml
Spiked Amount	50.000	Recovery	= 47.55%
Target Compounds			
1) T n-Nonane (C9)	3.109	1342948	19.881 ug/ml
2) T n-Decane (C10)	4.173	1410874	20.892 ug/ml
3) T A~Naphthalene (C11.7)	5.736	1692656	21.729 ug/ml
4) T n-Dodecane (C12)	6.186	1439991	21.870 ug/ml
5) T A~2-methylnaphthalene...	6.788	1712513	22.212 ug/ml
6) T n-Tetradecane (C14)	7.972	1463046	22.724 ug/ml
7) T n-Hexadecane (C16)	9.565	1461528	23.286 ug/ml
8) T n-Octadecane (C18)	11.000	1447144	23.916 ug/ml
10) T n-Eicosane (C20)	12.304	1451168	23.879 ug/ml
11) T n-Heneicosane (C21)	12.913	1441886	23.973 ug/ml
13) T n-Docosane (C22)	13.497	1440195	23.980 ug/ml
14) T n-Tetracosane (C24)	14.596	1439503	23.895 ug/ml
15) T n-Hexacosane (C26)	15.612	1438795	23.908 ug/ml
16) T n-Octacosane (C28)	16.558	1448874	23.812 ug/ml
17) T n-Tricontane (C30)	17.441	1438585	23.472 ug/ml
18) T n-Dotriacontane (C32)	18.271	1441045	21.772 ug/ml
19) T n-Tetratriacontane (C34)	19.050	1426094	22.078 ug/ml
20) T n-Hexatriacontane (C36)	19.787	1375166	22.579 ug/ml
21) T n-Octatriacontane (C38)	20.486	1430870	24.018 ug/ml
22) T n-Tetracontane (C40)	21.289	1354030	22.745 ug/ml
-----			

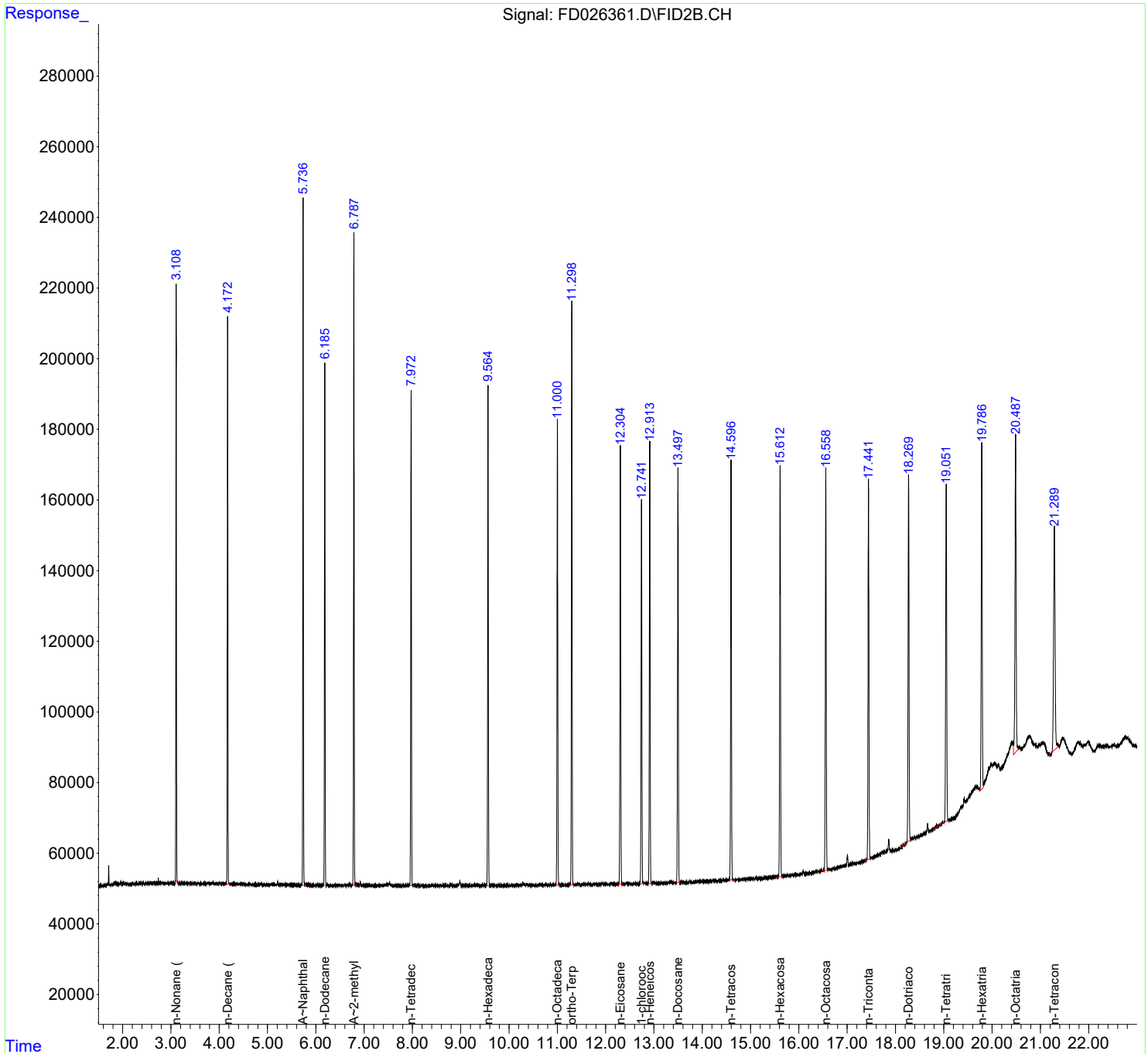
(f)=RT Delta > 1/2 Window

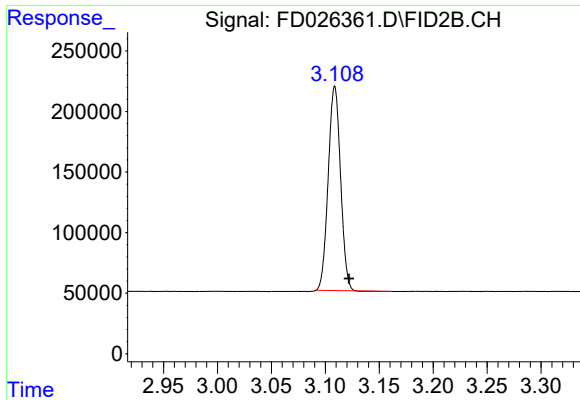
(m)=manual int.

Data Path : Z:\pestpcbsrv\HPCHEM1\FID\_D\Data\FD110518AL\  
 Data File : FD026361.D  
 Signal(s) : FID2B.CH  
 Acq On : 06 Nov 2018 11:18  
 Operator : AJ\SJ  
 Sample : 20 PPM ALIPHATIC HC STD  
 Misc :  
 ALS Vial : 66 Sample Multiplier: 1

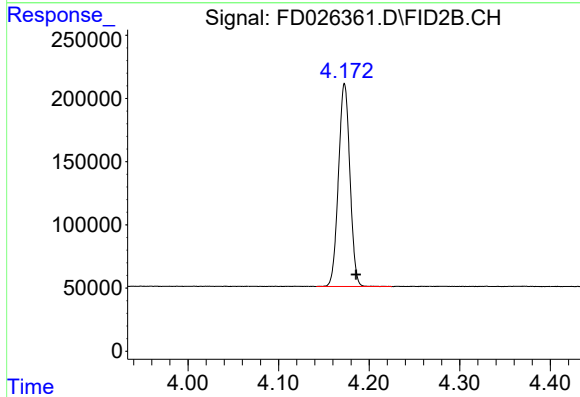
Integration File: autoint1.e  
 Quant Time: Nov 06 11:52:15 2018  
 Quant Method : Z:\pestpcbsrv\HPCHEM1\FID\_D\methods\Aliphatic EPH 101818.M  
 Quant Title : GC Extractables  
 QLast Update : Thu Oct 18 18:00:43 2018  
 Response via : Initial Calibration  
 Integrator: ChemStation 6890 Scale Mode: Large solvent peaks clipped

Volume Inj. : 1 ul  
 Signal Phase : Rxi-1ms  
 Signal Info : 20M x 0.18mm x 0.18um

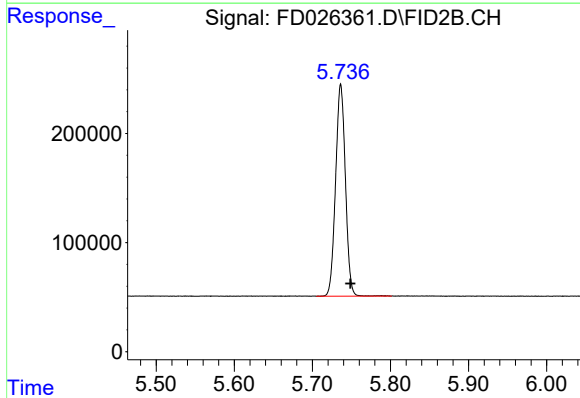




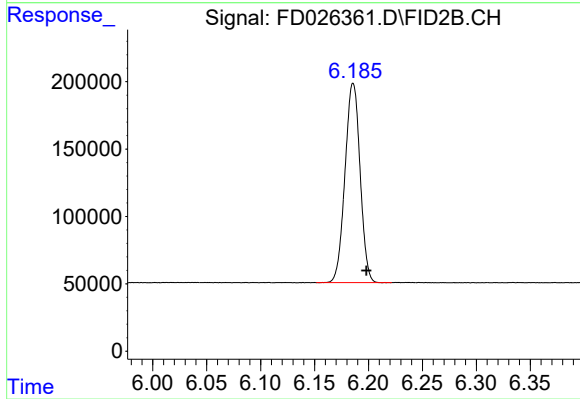
#1 n-Nonane (C9)  
R.T.: 3.109 min  
Delta R.T.: -0.013 min  
Response: 1342948  
Conc: 19.88 ug/ml



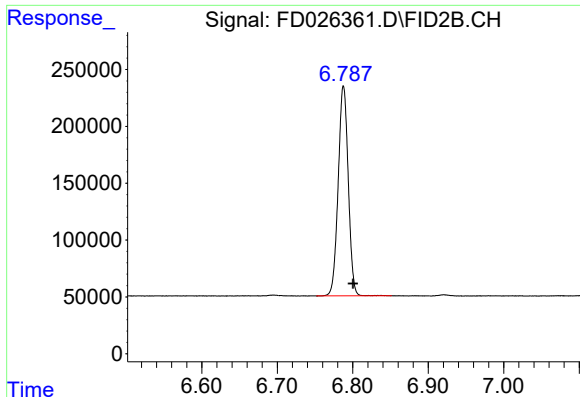
#2 n-Decane (C10)  
R.T.: 4.173 min  
Delta R.T.: -0.013 min  
Response: 1410874  
Conc: 20.89 ug/ml



#3 A-Naphthalene (C11.7)  
R.T.: 5.736 min  
Delta R.T.: -0.012 min  
Response: 1692656  
Conc: 21.73 ug/ml

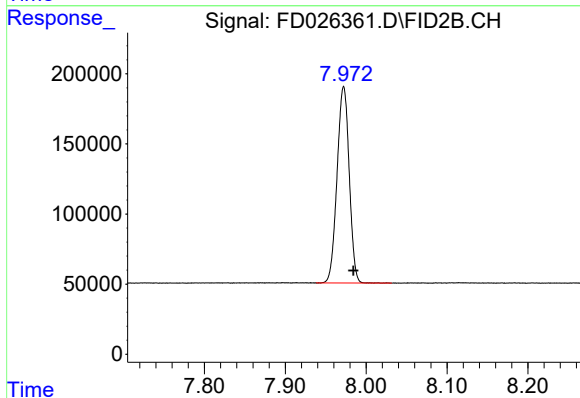


#4 n-Dodecane (C12)  
R.T.: 6.186 min  
Delta R.T.: -0.012 min  
Response: 1439991  
Conc: 21.87 ug/ml



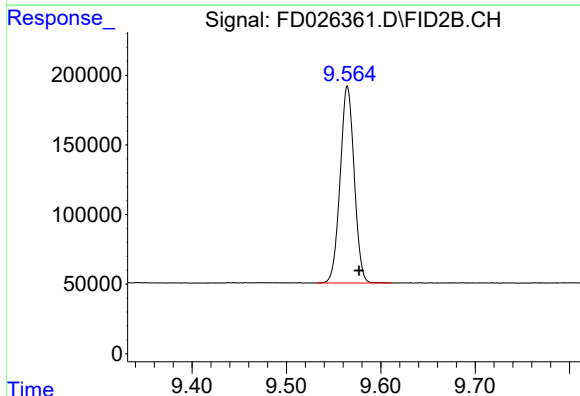
#5 A~2-methylnaphthalene (C12.89)

R.T.: 6.788 min  
Delta R.T.: -0.012 min  
Response: 1712513  
Conc: 22.21 ug/ml



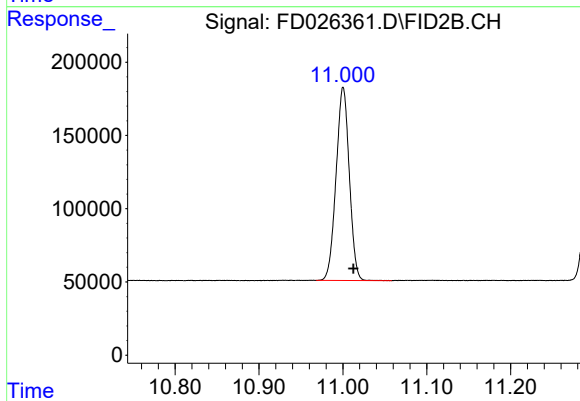
#6 n-Tetradecane (C14)

R.T.: 7.972 min  
Delta R.T.: -0.012 min  
Response: 1463046  
Conc: 22.72 ug/ml



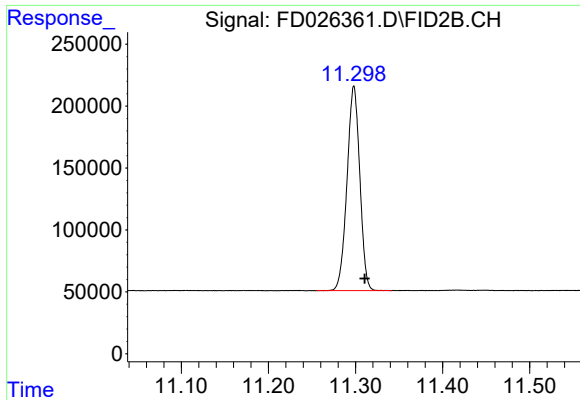
#7 n-Hexadecane (C16)

R.T.: 9.565 min  
Delta R.T.: -0.012 min  
Response: 1461528  
Conc: 23.29 ug/ml



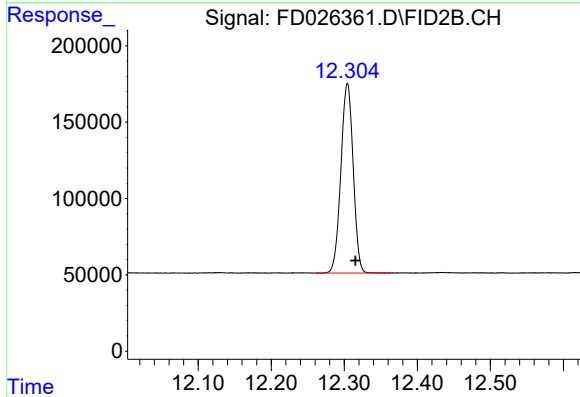
#8 n-Octadecane (C18)

R.T.: 11.000 min  
Delta R.T.: -0.012 min  
Response: 1447144  
Conc: 23.92 ug/ml



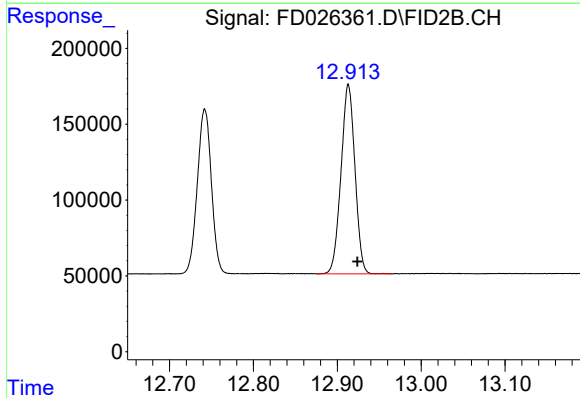
#9 ortho-Terphenyl (SURR)

R.T.: 11.298 min  
Delta R.T.: -0.013 min  
Response: 1686120  
Conc: 22.93 ug/ml



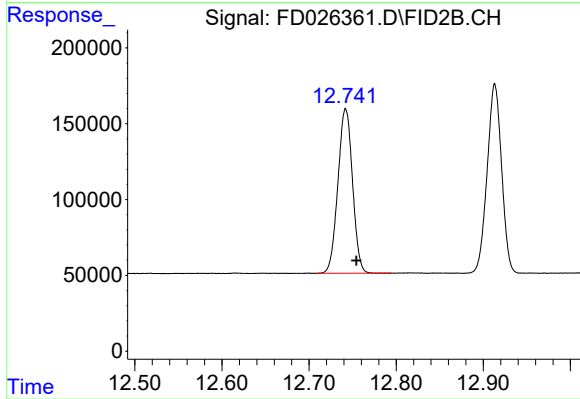
#10 n-Eicosane (C20)

R.T.: 12.304 min  
Delta R.T.: -0.011 min  
Response: 1451168  
Conc: 23.88 ug/ml



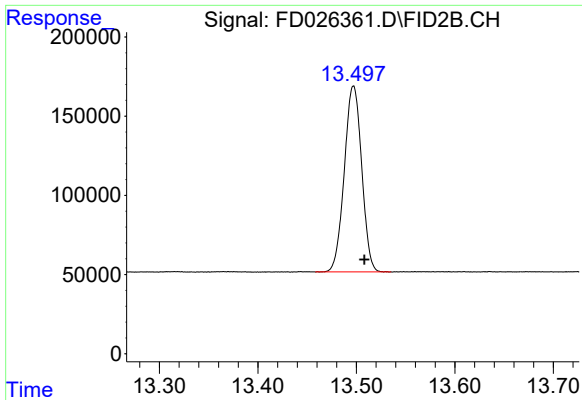
#11 n-Heneicosane (C21)

R.T.: 12.913 min  
Delta R.T.: -0.011 min  
Response: 1441886  
Conc: 23.97 ug/ml



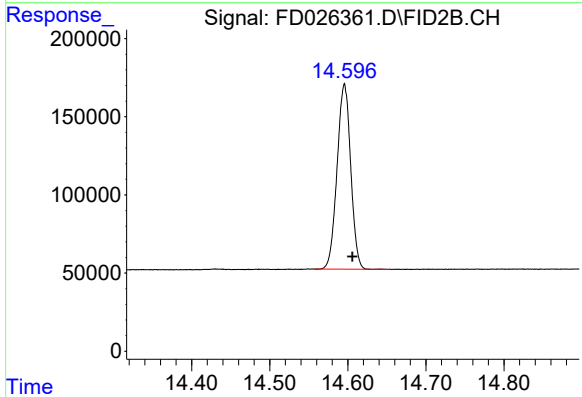
#12 1-chlorooctadecane (SURR)

R.T.: 12.742 min  
Delta R.T.: -0.012 min  
Response: 1265638  
Conc: 23.78 ug/ml



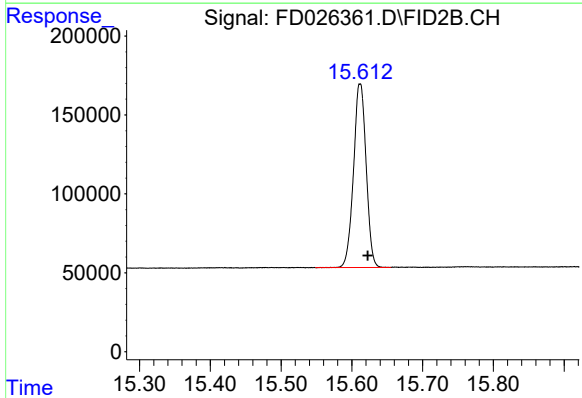
#13 n-Docosane (C22)

R.T.: 13.497 min  
Delta R.T.: -0.011 min  
Response: 1440195  
Conc: 23.98 ug/ml



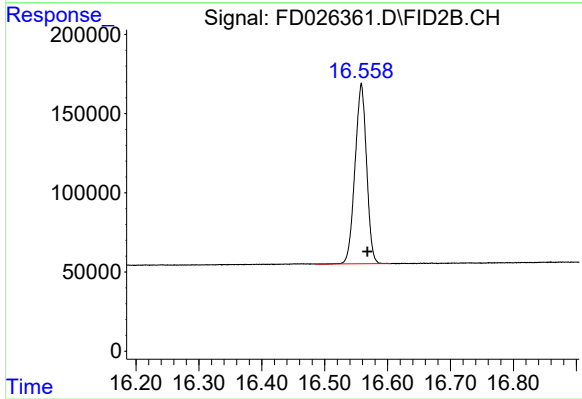
#14 n-Tetracosane (C24)

R.T.: 14.596 min  
Delta R.T.: -0.010 min  
Response: 1439503  
Conc: 23.90 ug/ml



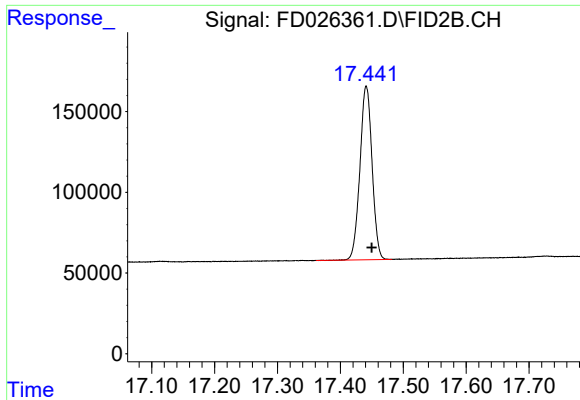
#15 n-Hexacosane (C26)

R.T.: 15.612 min  
Delta R.T.: -0.011 min  
Response: 1438795  
Conc: 23.91 ug/ml

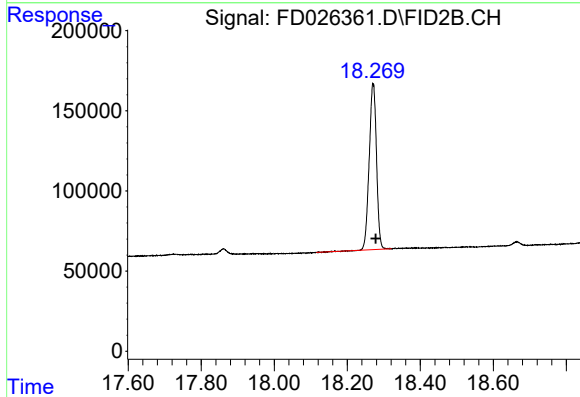


#16 n-Octacosane (C28)

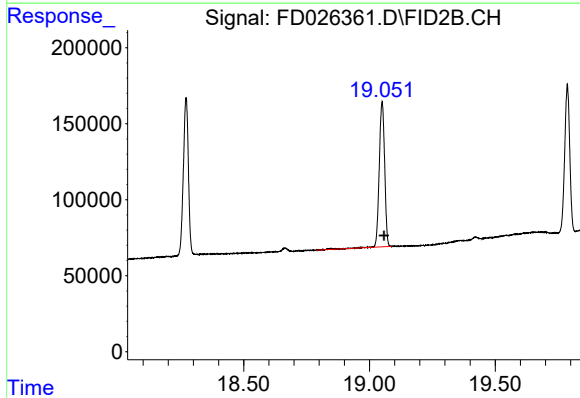
R.T.: 16.558 min  
Delta R.T.: -0.010 min  
Response: 1448874  
Conc: 23.81 ug/ml



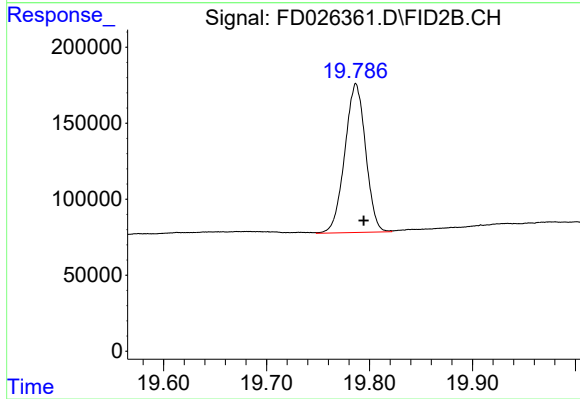
#17 n-Tricontane (C30)  
R.T.: 17.441 min  
Delta R.T.: -0.009 min  
Response: 1438585  
Conc: 23.47 ug/ml



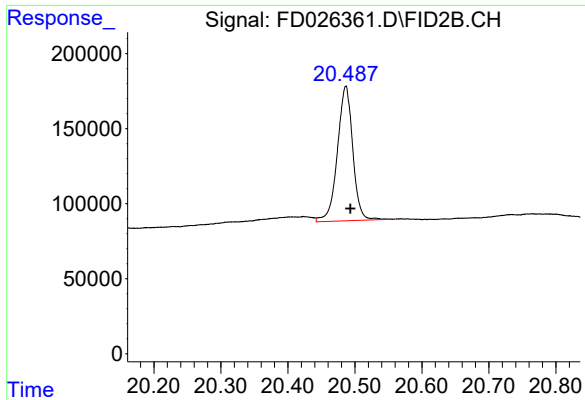
#18 n-Dotriacontane (C32)  
R.T.: 18.271 min  
Delta R.T.: -0.007 min  
Response: 1441045  
Conc: 21.77 ug/ml



#19 n-Tetracontane (C34)  
R.T.: 19.050 min  
Delta R.T.: -0.008 min  
Response: 1426094  
Conc: 22.08 ug/ml

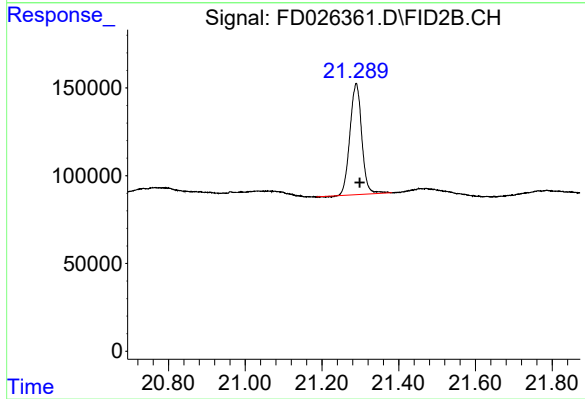


#20 n-Hexatriacontane (C36)  
R.T.: 19.787 min  
Delta R.T.: -0.007 min  
Response: 1375166  
Conc: 22.58 ug/ml



#21 n-Octatriacontane (C38)

R.T.: 20.486 min  
Delta R.T.: -0.007 min  
Response: 1430870  
Conc: 24.02 ug/ml



#22 n-Tetracontane (C40)

R.T.: 21.289 min  
Delta R.T.: -0.009 min  
Response: 1354030  
Conc: 22.75 ug/ml