

Data Path : Z:\pestpcbsrv\HPCHEM1\FID_D\Data\FD110519AL\
 Data File : FD031360.D
 Signal(s) : FID2B.CH
 Acq On : 06 Nov 2019 8:00
 Operator : DD\AJ
 Sample : 20 PPM ALIPHATIC HC STD
 Misc :
 ALS Vial : 70 Sample Multiplier: 1

Integration File: autoint1.e
 Quant Time: Nov 06 08:34:35 2019
 Quant Method : Z:\pestpcbsrv\HPCHEM1\FID_D\methods\Alaphatic EPH 110519.M
 Quant Title : GC Extractables
 QLast Update : Wed Nov 06 06:45:13 2019
 Response via : Initial Calibration
 Integrator: ChemStation 6890 Scale Mode: Large solvent peaks clipped

Volume Inj. : 1 ul
 Signal Phase : Rxi-1ms
 Signal Info : 20M x 0.18mm x 0.18um

Compound	R.T.	Response	Conc Units

System Monitoring Compounds			
9) S ortho-Terphenyl (SURR)	11.537	3076617	20.219 ug/ml
Spiked Amount	50.000	Recovery	= 40.44%
12) S 1-chlorooctadecane (S...	12.968	2289509	20.148 ug/ml
Spiked Amount	50.000	Recovery	= 40.30%
Target Compounds			
1) T n-Nonane (C9)	3.332	2669140	20.121 ug/ml
2) T n-Decane (C10)	4.397	2686947	20.146 ug/ml
3) T A~Naphthalene (C11.7)	5.974	3021424	20.173 ug/ml
4) T n-Dodecane (C12)	6.408	2713633	20.150 ug/ml
5) T A~2-methylnaphthalene...	7.025	3057618	20.173 ug/ml
6) T n-Tetradecane (C14)	8.195	2720446	20.189 ug/ml
7) T n-Hexadecane (C16)	9.789	2714581	20.246 ug/ml
8) T n-Octadecane (C18)	11.224	2695281	20.208 ug/ml
10) T n-Eicosane (C20)	12.526	2660339	20.168 ug/ml
11) T n-Heneicosane (C21)	13.136	2672484	20.196 ug/ml
13) T n-Docosane (C22)	13.719	2642794	20.127 ug/ml
14) T n-Tetracosane (C24)	14.816	2631926	20.113 ug/ml
15) T n-Hexacosane (C26)	15.831	2594101	20.080 ug/ml
16) T n-Octacosane (C28)	16.776	2567154	20.061 ug/ml
17) T n-Tricontane (C30)	17.658	2546419	19.963 ug/ml
18) T n-Dotriacontane (C32)	18.486	2459386	19.936 ug/ml
19) T n-Tetratriacontane (C34)	19.265	2387518	19.959 ug/ml
20) T n-Hexatriacontane (C36)	19.999	2377044	20.827 ug/ml
21) T n-Octatriacontane (C38)	20.715	2102017	20.014 ug/ml
22) T n-Tetracontane (C40)	21.584	2167759	20.187 ug/ml

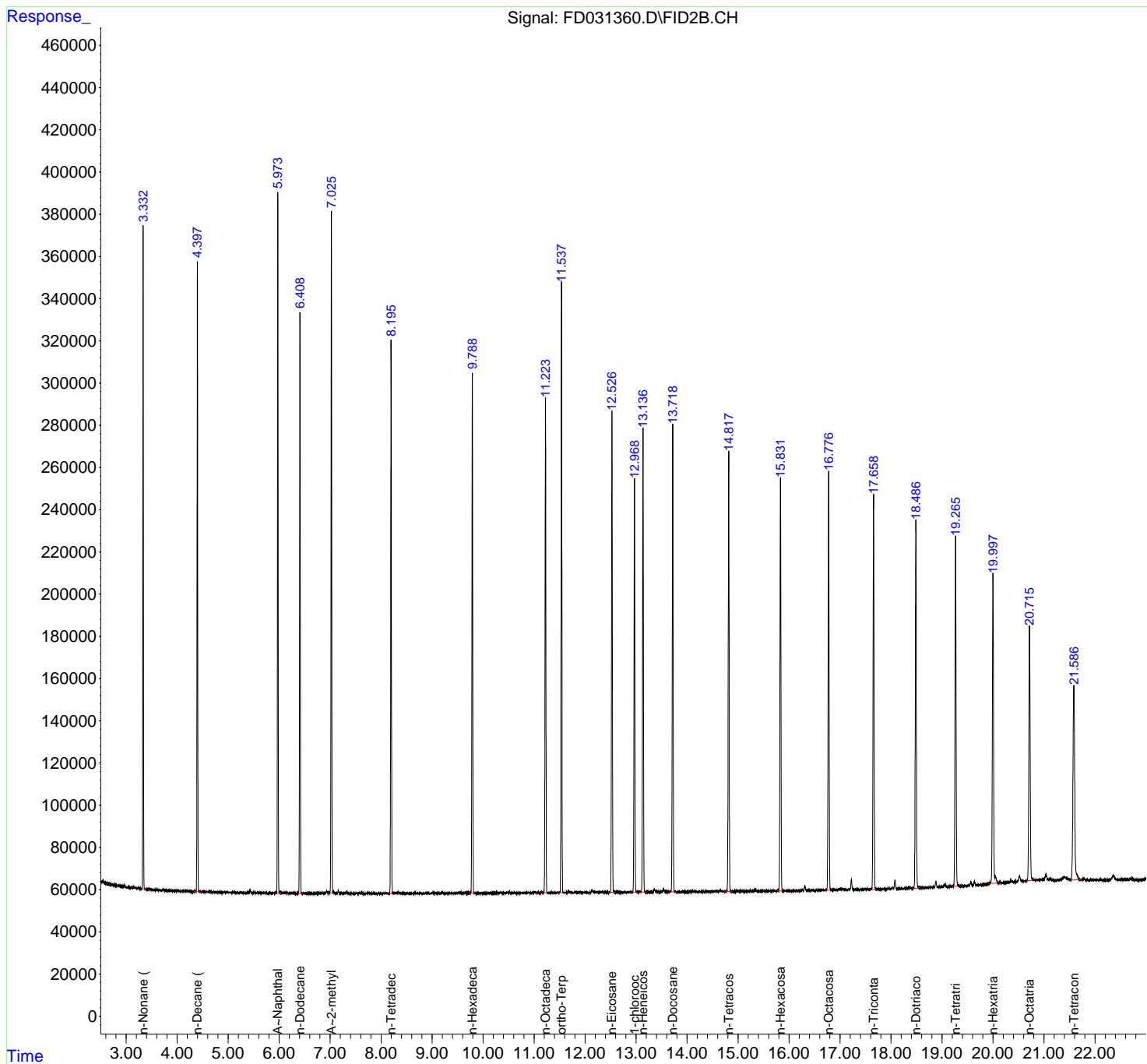
(f)=RT Delta > 1/2 Window

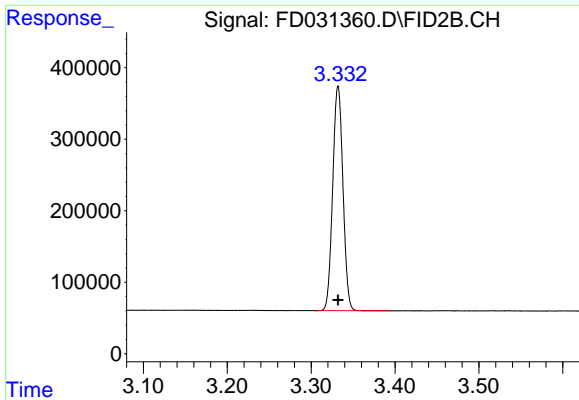
(m)=manual int.

Data Path : Z:\pestpcbsrv\HPCHEM1\FID_D\Data\FD110519AL\
 Data File : FD031360.D
 Signal(s) : FID2B.CH
 Acq On : 06 Nov 2019 8:00
 Operator : DD\AJ
 Sample : 20 PPM ALIPHATIC HC STD
 Misc :
 ALS Vial : 70 Sample Multiplier: 1

Integration File: autoint1.e
 Quant Time: Nov 06 08:34:35 2019
 Quant Method : Z:\pestpcbsrv\HPCHEM1\FID_D\methods\Aliphatic EPH 110519.M
 Quant Title : GC Extractables
 QLast Update : Wed Nov 06 06:45:13 2019
 Response via : Initial Calibration
 Integrator: ChemStation 6890 Scale Mode: Large solvent peaks clipped

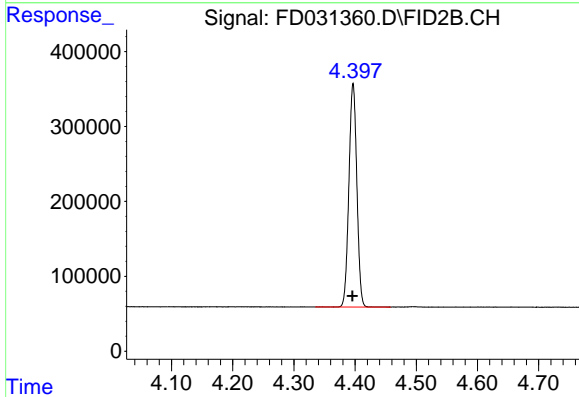
Volume Inj. : 1 ul
 Signal Phase : Rxi-1ms
 Signal Info : 20M x 0.18mm x 0.18um





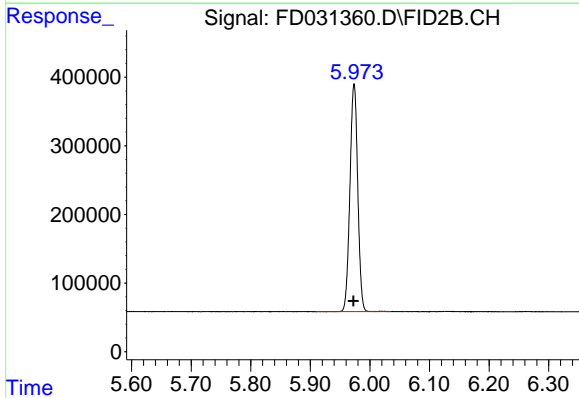
#1 n-Nonane (C9)

R.T.: 3.332 min
Delta R.T.: 0.000 min
Response: 2669140
Conc: 20.12 ug/ml



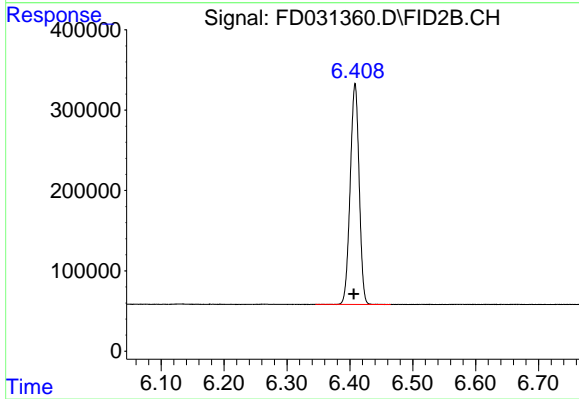
#2 n-Decane (C10)

R.T.: 4.397 min
Delta R.T.: 0.001 min
Response: 2686947
Conc: 20.15 ug/ml



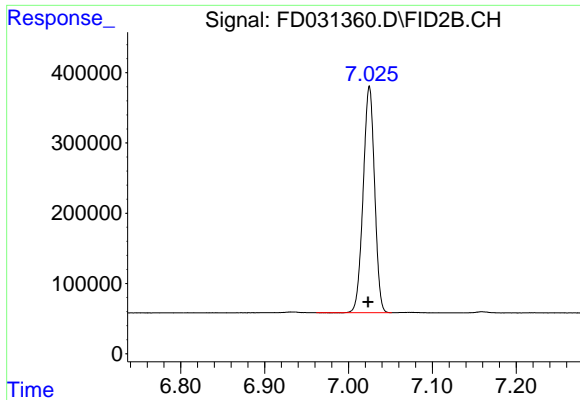
#3 A~Naphthalene (C11.7)

R.T.: 5.974 min
Delta R.T.: 0.001 min
Response: 3021424
Conc: 20.17 ug/ml



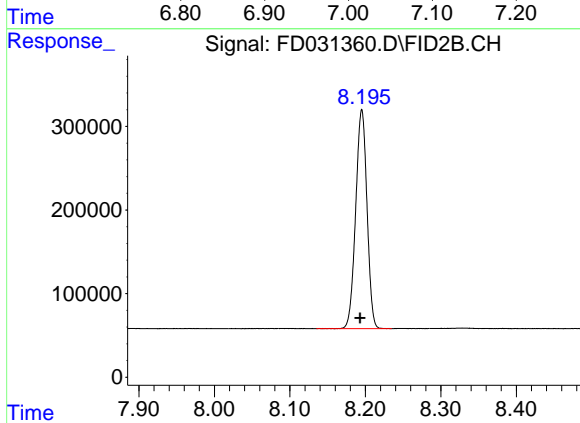
#4 n-Dodecane (C12)

R.T.: 6.408 min
Delta R.T.: 0.002 min
Response: 2713633
Conc: 20.15 ug/ml



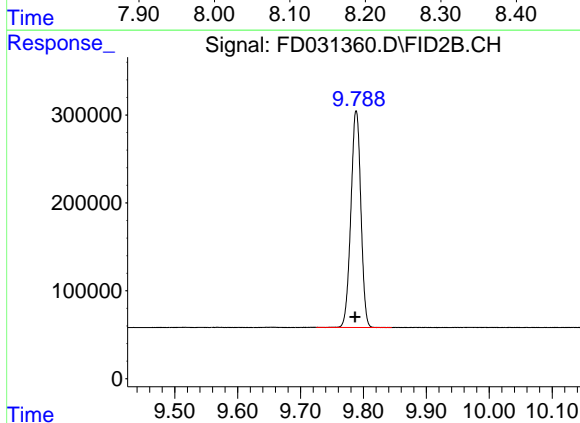
#5 A~2-methylnaphthalene (C12.89)

R.T.: 7.025 min
Delta R.T.: 0.001 min
Response: 3057618
Conc: 20.17 ug/ml



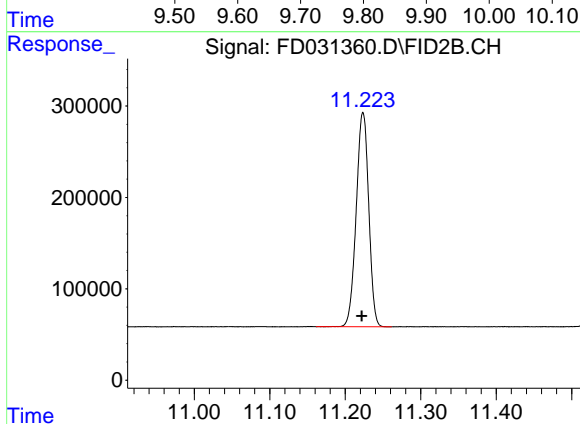
#6 n-Tetradecane (C14)

R.T.: 8.195 min
Delta R.T.: 0.002 min
Response: 2720446
Conc: 20.19 ug/ml



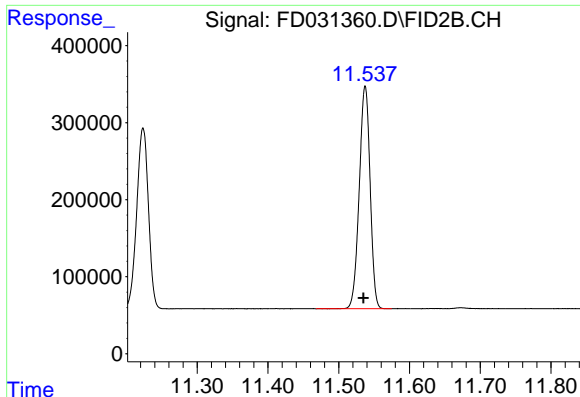
#7 n-Hexadecane (C16)

R.T.: 9.789 min
Delta R.T.: 0.002 min
Response: 2714581
Conc: 20.25 ug/ml



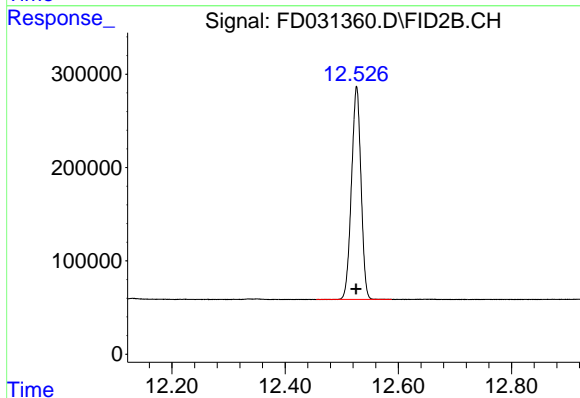
#8 n-Octadecane (C18)

R.T.: 11.224 min
Delta R.T.: 0.002 min
Response: 2695281
Conc: 20.21 ug/ml



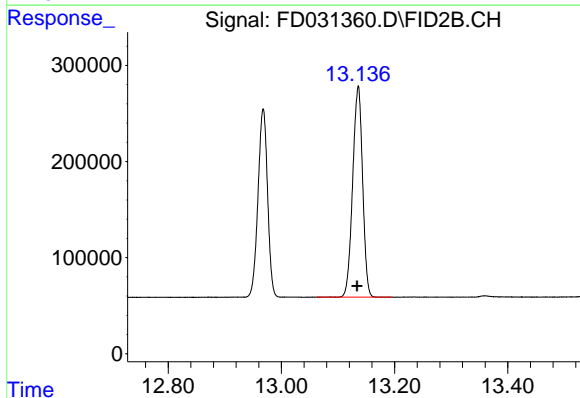
#9 ortho-Terphenyl (SURR)

R.T.: 11.537 min
 Delta R.T.: 0.002 min
 Response: 3076617
 Conc: 20.22 ug/ml



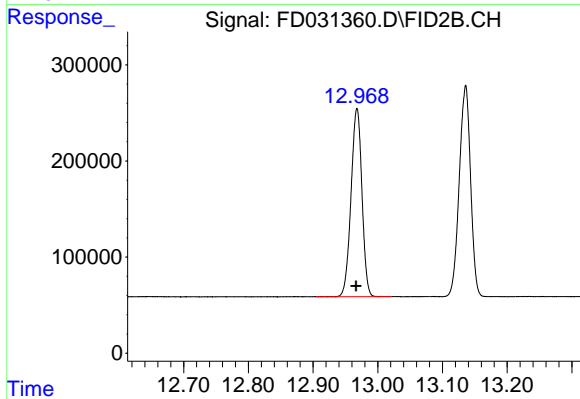
#10 n-Eicosane (C20)

R.T.: 12.526 min
 Delta R.T.: 0.001 min
 Response: 2660339
 Conc: 20.17 ug/ml



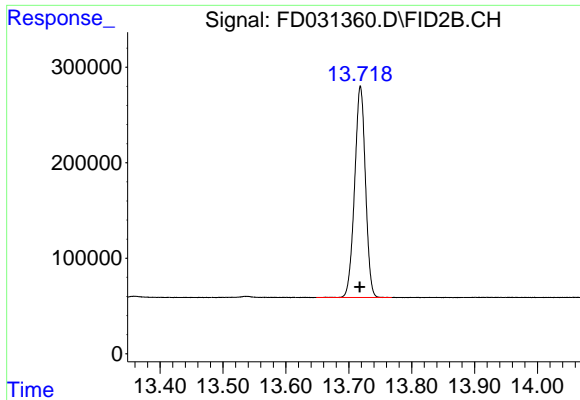
#11 n-Heneicosane (C21)

R.T.: 13.136 min
 Delta R.T.: 0.002 min
 Response: 2672484
 Conc: 20.20 ug/ml



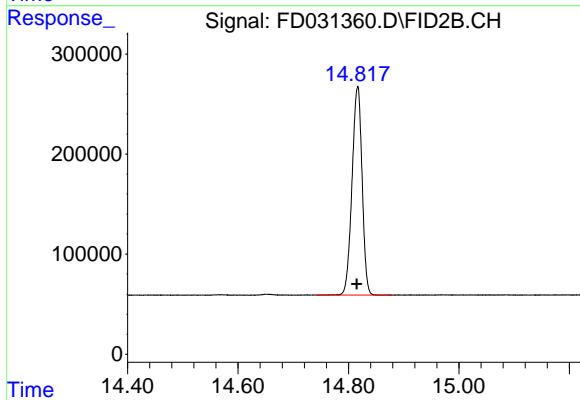
#12 1-chlorooctadecane (SURR)

R.T.: 12.968 min
 Delta R.T.: 0.001 min
 Response: 2289509
 Conc: 20.15 ug/ml



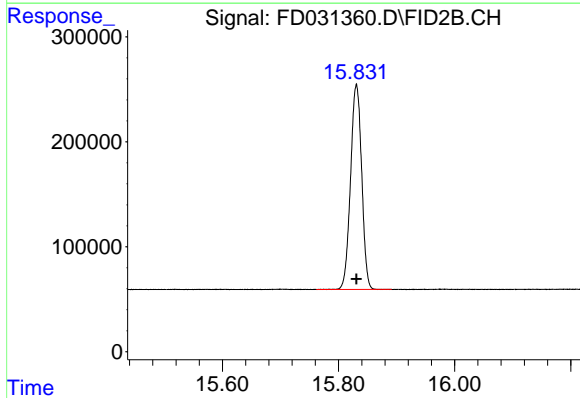
#13 n-Docosane (C22)

R.T.: 13.719 min
Delta R.T.: 0.000 min
Response: 2642794
Conc: 20.13 ug/ml



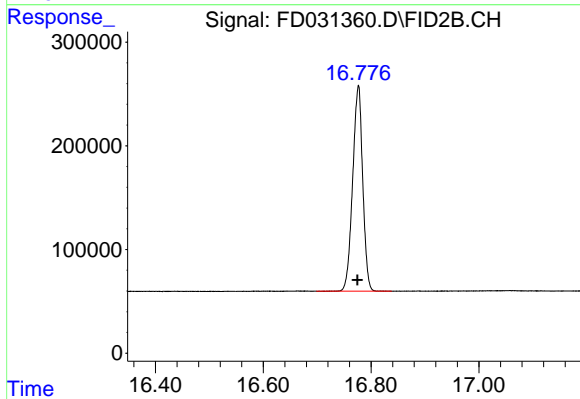
#14 n-Tetracosane (C24)

R.T.: 14.816 min
Delta R.T.: 0.002 min
Response: 2631926
Conc: 20.11 ug/ml



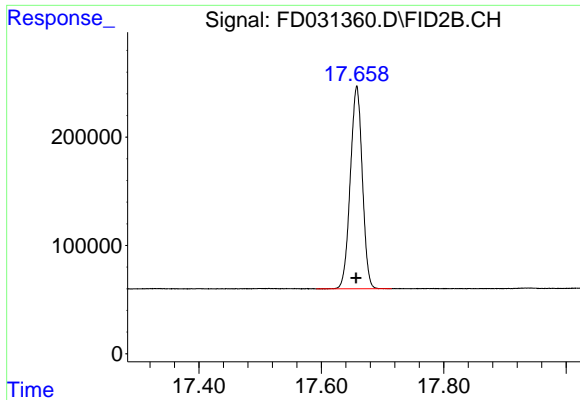
#15 n-Hexacosane (C26)

R.T.: 15.831 min
Delta R.T.: 0.000 min
Response: 2594101
Conc: 20.08 ug/ml

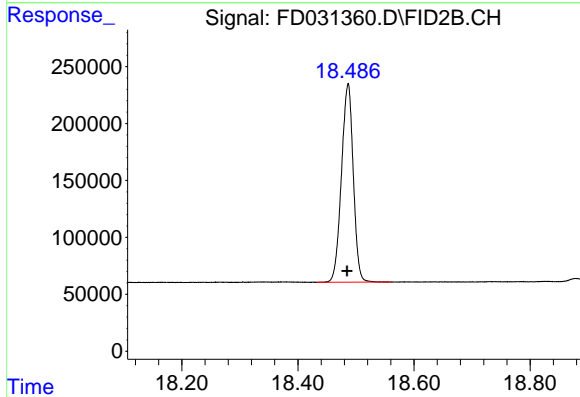


#16 n-Octacosane (C28)

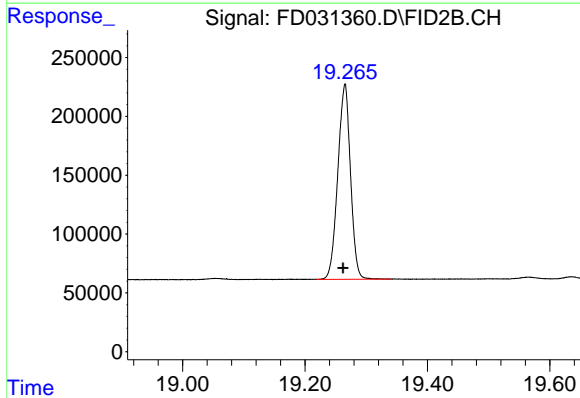
R.T.: 16.776 min
Delta R.T.: 0.002 min
Response: 2567154
Conc: 20.06 ug/ml



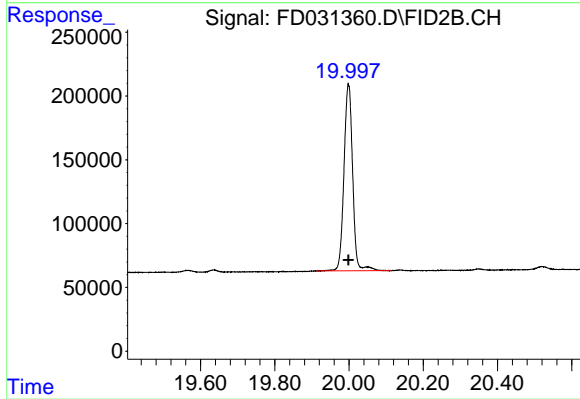
#17 n-Tricontane (C30)
R.T.: 17.658 min
Delta R.T.: 0.001 min
Response: 2546419
Conc: 19.96 ug/ml



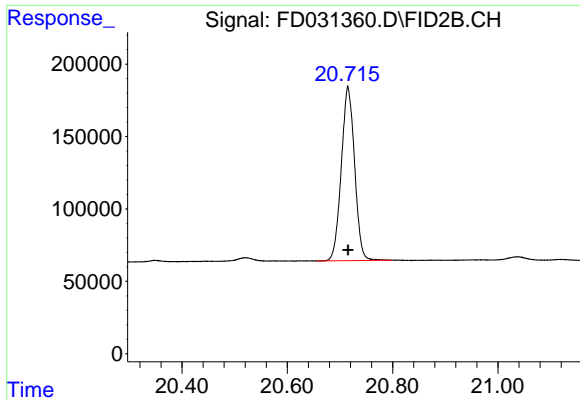
#18 n-Dotriacontane (C32)
R.T.: 18.486 min
Delta R.T.: 0.002 min
Response: 2459386
Conc: 19.94 ug/ml



#19 n-Tetratriacontane (C34)
R.T.: 19.265 min
Delta R.T.: 0.002 min
Response: 2387518
Conc: 19.96 ug/ml

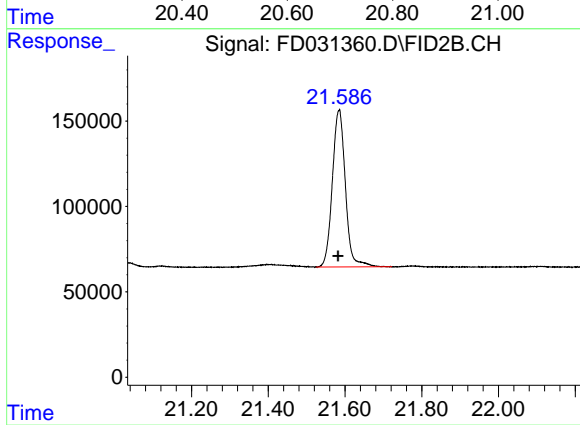


#20 n-Hexatriacontane (C36)
R.T.: 19.999 min
Delta R.T.: 0.000 min
Response: 2377044
Conc: 20.83 ug/ml



#21 n-Octatriacontane (C38)

R.T.: 20.715 min
Delta R.T.: 0.000 min
Response: 2102017
Conc: 20.01 ug/ml



#22 n-Tetracontane (C40)

R.T.: 21.584 min
Delta R.T.: 0.002 min
Response: 2167759
Conc: 20.19 ug/ml