

Data Path : Z:\pestpcbsrv\HPCHEM1\FID_D\Data\FD110718AL\
 Data File : FD026391.D
 Signal(s) : FID2B.CH
 Acq On : 07 Nov 2018 14:23
 Operator : AJ\SJ
 Sample : J5816-09
 Misc :
 ALS Vial : 58 Sample Multiplier: 1

Integration File: autoint1.e
 Quant Time: Nov 07 14:51:26 2018
 Quant Method : Z:\pestpcbsrv\HPCHEM1\FID_D\methods\Alaphatic EPH 101818.M
 Quant Title : GC Extractables
 QLast Update : Thu Oct 18 18:00:43 2018
 Response via : Initial Calibration
 Integrator: ChemStation 6890 Scale Mode: Large solvent peaks clipped

Volume Inj. : 1 ul
 Signal Phase : Rxi-1ms
 Signal Info : 20M x 0.18mm x 0.18um

Compound	R.T.	Response	Conc Units

System Monitoring Compounds			
12) S 1-chlorooctadecane (S...	12.739	1724081	32.388 ug/ml
Spiked Amount 50.000		Recovery =	64.78%

Target Compounds

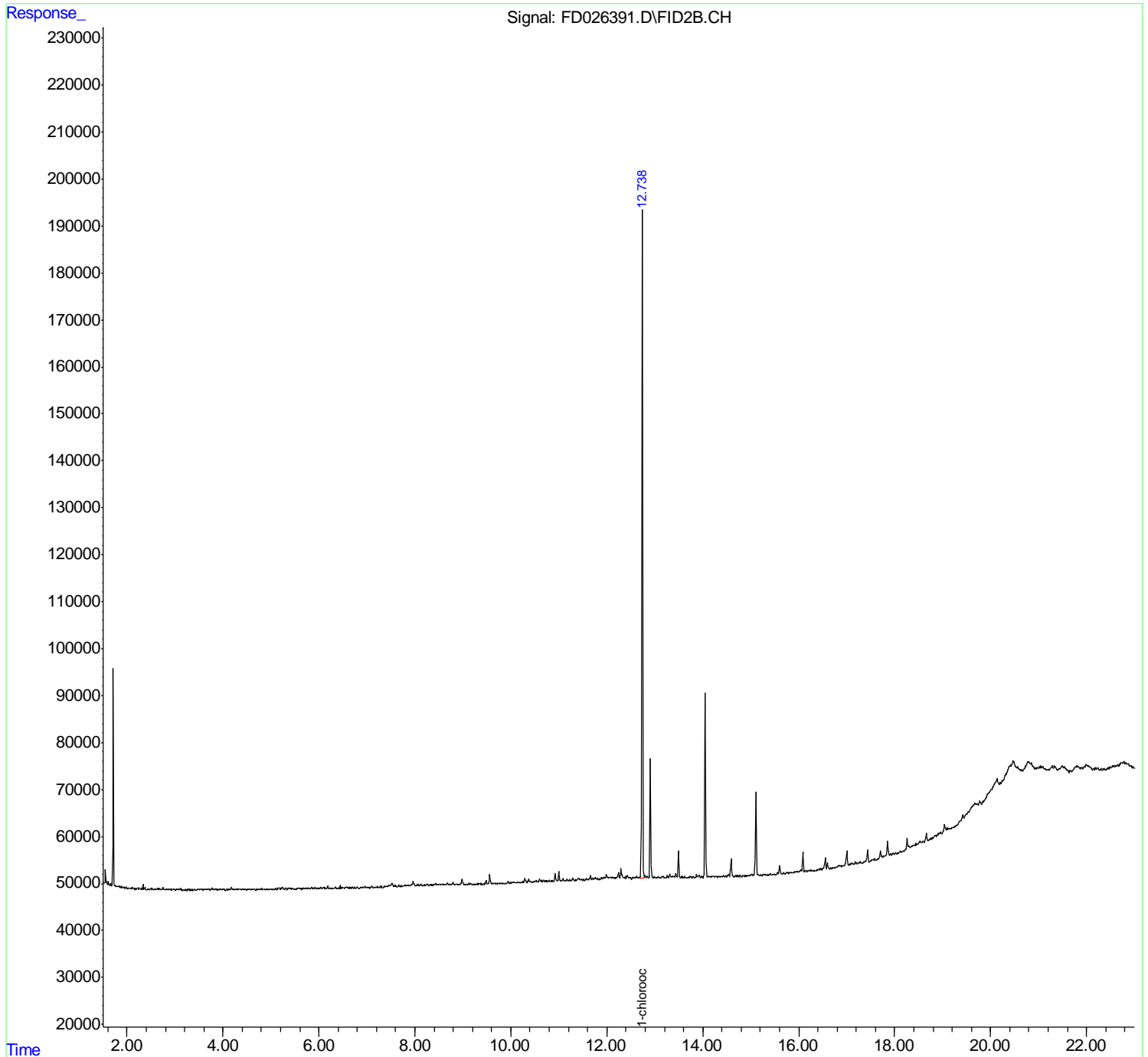
(f)=RT Delta > 1/2 Window

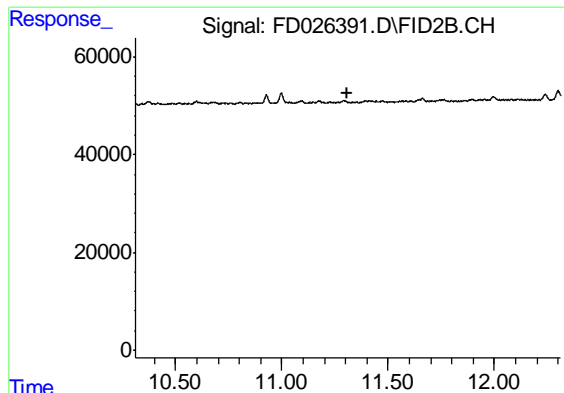
(m)=manual int.

Data Path : Z:\pestpcbsrv\HPCHEM1\FID_D\Data\FD110718AL\
Data File : FD026391.D
Signal(s) : FID2B.CH
Acq On : 07 Nov 2018 14:23
Operator : AJ\SJ
Sample : J5816-09
Misc :
ALS Vial : 58 Sample Multiplier: 1

Integration File: autoint1.e
Quant Time: Nov 07 14:51:26 2018
Quant Method : Z:\pestpcbsrv\HPCHEM1\FID_D\methods\Alaphatic EPH 101818.M
Quant Title : GC Extractables
QLast Update : Thu Oct 18 18:00:43 2018
Response via : Initial Calibration
Integrator: ChemStation 6890 Scale Mode: Large solvent peaks clipped

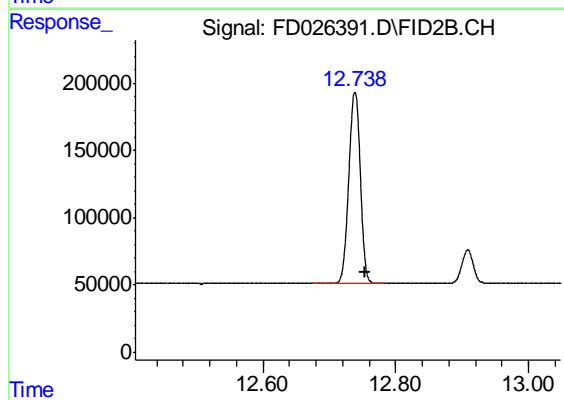
Volume Inj. : 1 ul
Signal Phase : Rxi-1ms
Signal Info : 20M x 0.18mm x 0.18um





#9 ortho-Terphenyl (SURR)

R.T.: 0.000 min
Exp R.T. : 11.311 min
Response: 0
Conc: N.D.



#12 1-chlorooctadecane (SURR)

R.T.: 12.739 min
Delta R.T.: -0.016 min
Response: 1724081
Conc: 32.39 ug/ml