

Data Path : Z:\pestpcbsrv\HPCHEM1\FID_D\Data\FD110718AR\
 Data File : FD026404.D
 Signal(s) : FID2B.CH
 Acq On : 07 Nov 2018 22:07
 Operator : AJ\SJ
 Sample : J5827-16
 Misc :
 ALS Vial : 59 Sample Multiplier: 1

Integration File: autoint1.e
 Quant Time: Nov 08 09:59:14 2018
 Quant Method : Z:\pestpcbsrv\HPCHEM1\FID_D\methods\Aromatic EPH 101718.M
 Quant Title : GC Extractables
 QLast Update : Thu Oct 18 11:23:05 2018
 Response via : Initial Calibration
 Integrator: ChemStation 6890 Scale Mode: Large solvent peaks clipped

Volume Inj. : 1 µl
 Signal Phase : Rxi-1ms
 Signal Info : 20M x 0.18mm x 0.18µm

Compound	R.T.	Response	Conc Units
System Monitoring Compounds			
4) S 2-Bromonaphthalene (S...	7.401	4798916	64.913 ug/ml
Spiked Amount	50.000	Recovery	= 129.83%
6) S 2-Fluorobiphenyl (SURR)	8.253	3505995	68.297 ug/ml
Spiked Amount	50.000	Recovery	= 136.59%#
11) S ortho-Terphenyl (SURR)	11.293	756845	9.580 ug/ml
Spiked Amount	50.000	Recovery	= 19.16%

Target Compounds

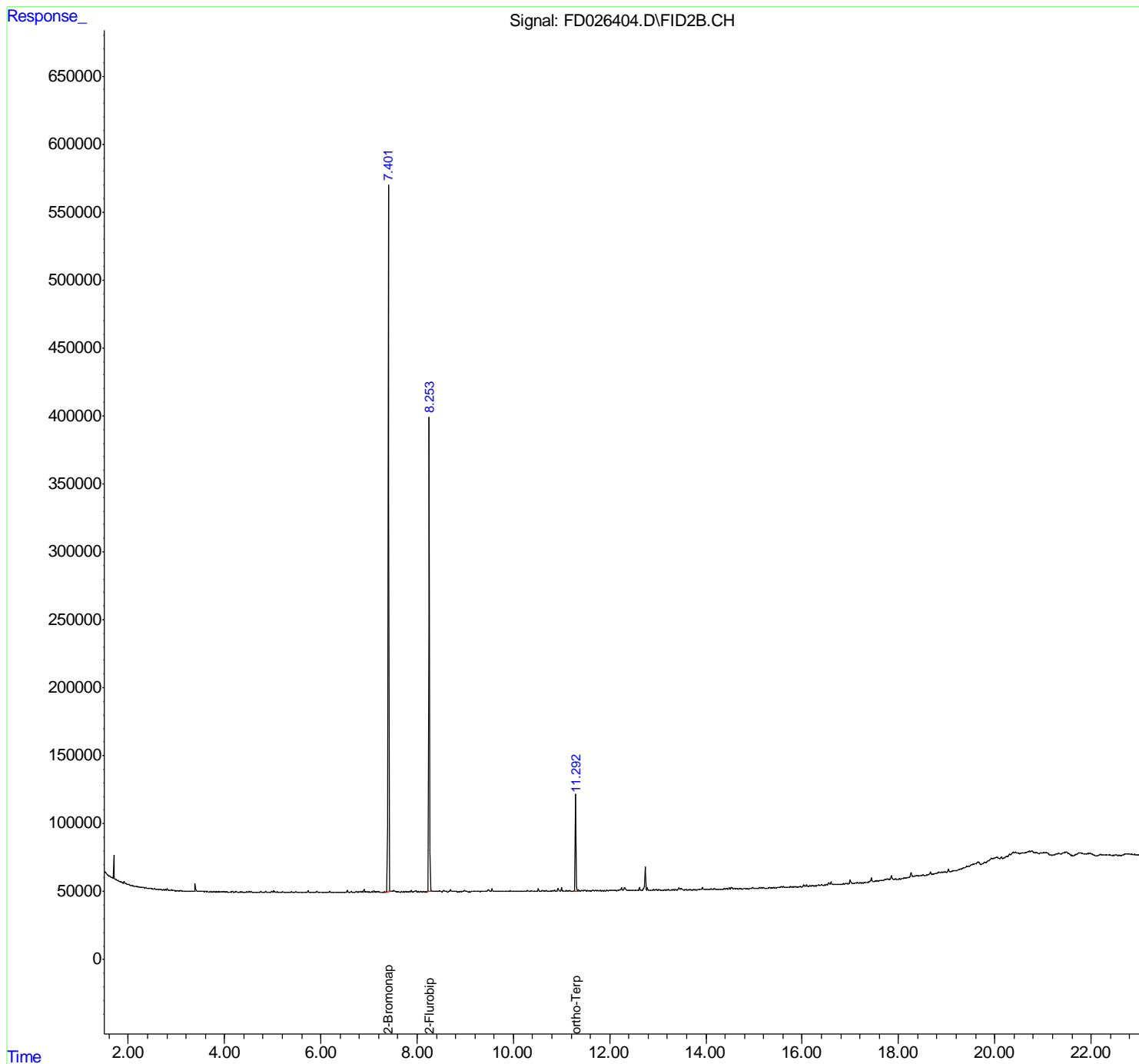
(f)=RT Delta > 1/2 Window

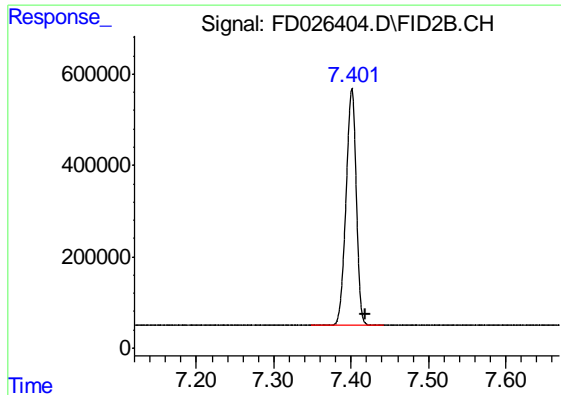
(m)=manual int.

Data Path : Z:\pestpcbsrv\HPCHEM1\FID_D\Data\FD110718AR\
Data File : FD026404.D
Signal(s) : FID2B.CH
Acq On : 07 Nov 2018 22:07
Operator : AJ\SJ
Sample : J5827-16
Misc :
ALS Vial : 59 Sample Multiplier: 1

Integration File: autoint1.e
Quant Time: Nov 08 09:59:14 2018
Quant Method : Z:\pestpcbsrv\HPCHEM1\FID_D\methods\Aromatic EPH 101718.M
Quant Title : GC Extractables
QLast Update : Thu Oct 18 11:23:05 2018
Response via : Initial Calibration
Integrator: ChemStation 6890 Scale Mode: Large solvent peaks clipped

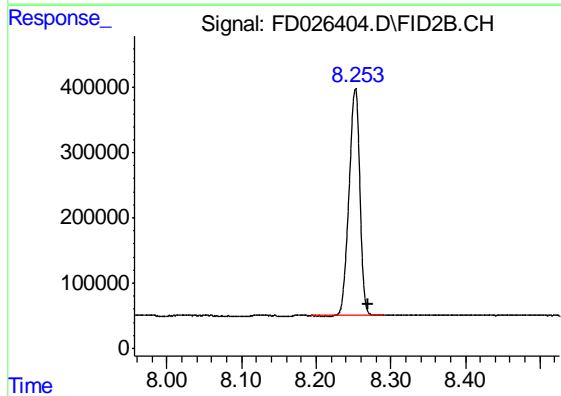
Volume Inj. : 1 µl
Signal Phase : Rxi-1ms
Signal Info : 20M x 0.18mm x 0.18µm





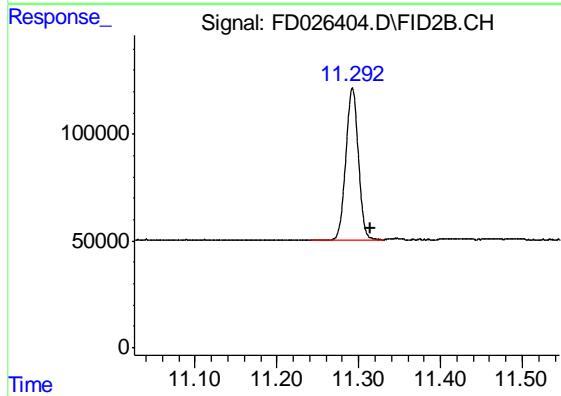
#4 2-Bromonaphthalene (SURR)

R.T.: 7.401 min
Delta R.T.: -0.017 min
Response: 4798916
Conc: 64.91 ug/ml



#6 2-Fluorobiphenyl (SURR)

R.T.: 8.253 min
Delta R.T.: -0.017 min
Response: 3505995
Conc: 68.30 ug/ml



#11 ortho-Terphenyl (SURR)

R.T.: 11.293 min
Delta R.T.: -0.023 min
Response: 756845
Conc: 9.58 ug/ml