

Data Path : Z:\pestpcbsrv\HPCHEM1\FID_D\Data\FD110819AR\
 Data File : FD031392.D
 Signal(s) : FID2B.CH
 Acq On : 08 Nov 2019 22:51
 Operator : DD\AJ
 Sample : K5725-08MSD
 Misc :
 ALS Vial : 60 Sample Multiplier: 1

Instrument :
 FID_D
 ClientSampleId :
 SO-3MSD

Integration File: autoint1.e
 Quant Time: Nov 09 02:43:57 2019
 Quant Method : Z:\pestpcbsrv\HPCHEM1\FID_D\methods\Aromatic EPH 110519.M
 Quant Title : GC Extractables
 QLast Update : Wed Nov 06 03:03:26 2019
 Response via : Initial Calibration
 Integrator: ChemStation 6890 Scale Mode: Large solvent peaks clipped

Volume Inj. : 1 µl
 Signal Phase : Rxi-1ms
 Signal Info : 20M x 0.18mm x 0.18µm

Compound	R.T.	Response	Conc Units
System Monitoring Compounds			
4) S 2-Bromonaphthalene (S...	7.638	11339071	95.257 ug/ml
Spiked Amount 50.000		Recovery =	190.51%
6) S 2-Fluorobiphenyl (SURR)	8.503	13341322	161.924 ug/ml
Spiked Amount 50.000 Range 0 - 131		Recovery =	323.85%#
11) S ortho-Terphenyl (SURR)	11.553	12657389	98.912 ug/ml
Spiked Amount 50.000		Recovery =	197.82%
Target Compounds			
1) T 1,2,3-Trimethylbenzen...	4.428	3313377	27.604 ug/ml
2) T Naphthalene (C11.7)	6.000	903424	7.017 ug/ml
3) T 2-Methylnaphthalene (...)	7.026	10901074	84.881 ug/ml
5) T Acenaphthylene (C15.06)	8.305	17926878	142.403 ug/ml
7) T Acenaphthene (C15.5)	8.605	15522512	118.552 ug/ml
8) T Fluorene (C16.55)	9.392	13751788	105.181 ug/ml
9) T Phenanthrene (C19.36)	10.795	20146318	152.905 ug/ml
10) T Anthracene (C19.43)	10.867	19783930	153.429 ug/ml
12) T Fluoranthene (C21.85)	12.607	20682107	156.061 ug/ml
13) T Pyrene (C20.8)	12.902	15881272	120.588 ug/ml
14) T Benzo[a]anthracene (C...	14.757	8299483	65.565 ug/ml
15) T Chrysene (C27.41)	14.802	8549743	67.409 ug/ml
16) T benzo[b]fluoranthene ...	16.306	8040591	64.054 ug/ml
17) T Bnezo[k]fluoranthene ...	16.337	6377683	50.680 ug/ml
18) T Benzo[a]pyrene (C31.34)	16.681	6708009	54.055 ug/ml
19) T Indeno[1,2,3-cd]pyren...	18.045	6902300	56.745 ug/ml
20) T Dibenz[a,h]anthracene...	18.083	5844558	47.201 ug/ml
21) T Benzo[g,h,i]perylene ...	18.302	6421209	53.229 ug/ml

(f)=RT Delta > 1/2 Window

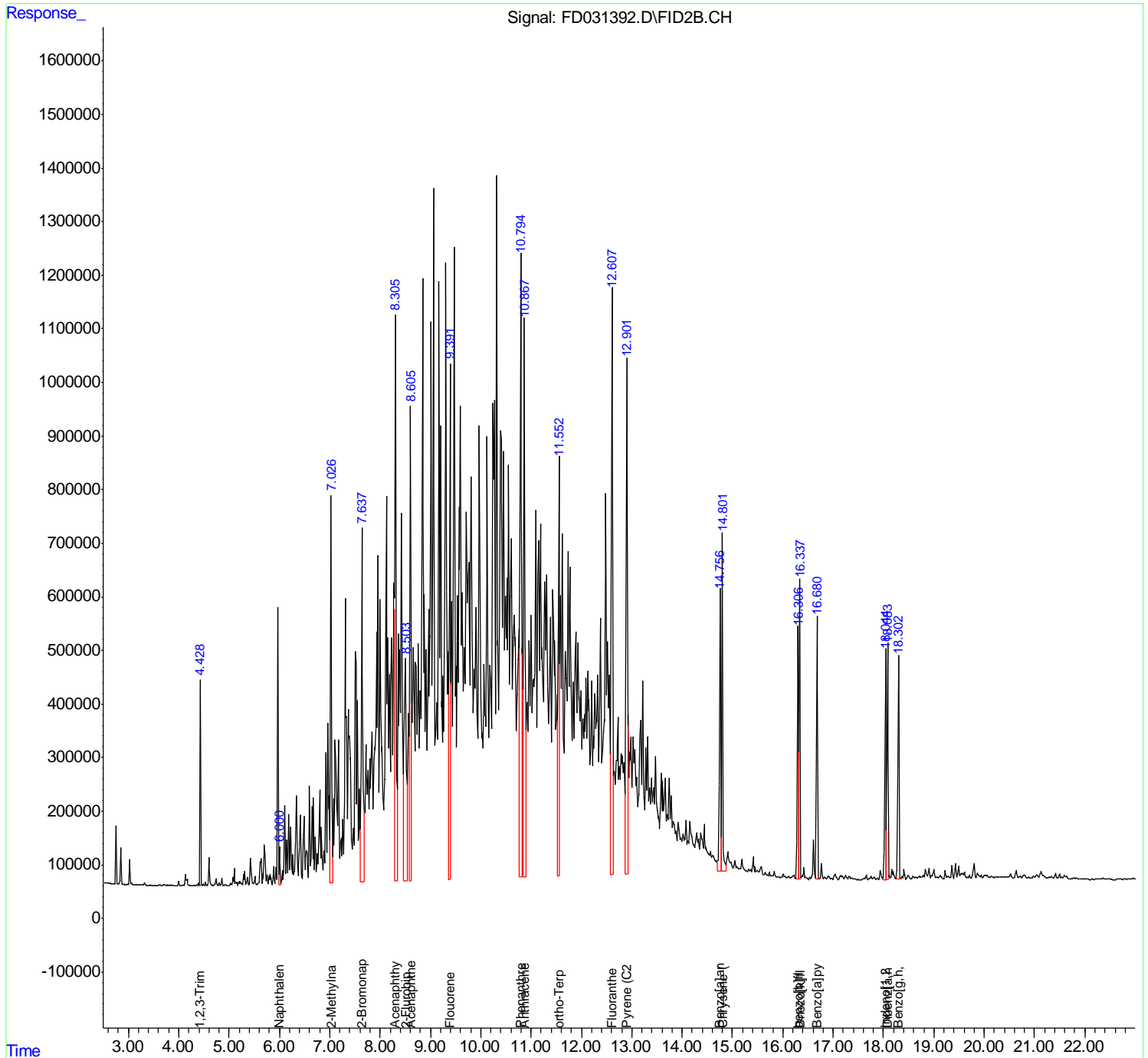
(m)=manual int.

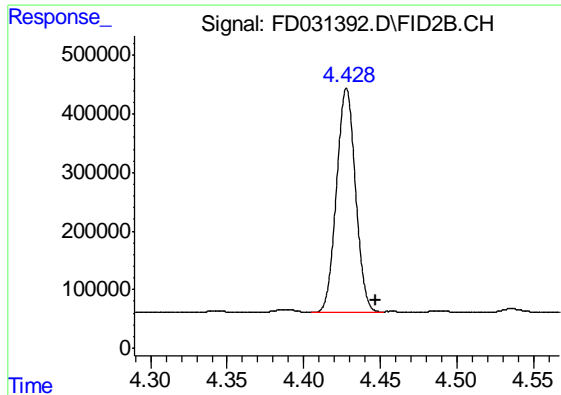
Data Path : Z:\pestpcbsrv\HPCHEM1\FID_D\Data\FD110819AR\
 Data File : FD031392.D
 Signal(s) : FID2B.CH
 Acq On : 08 Nov 2019 22:51
 Operator : DD\AJ
 Sample : K5725-08MSD
 Misc :
 ALS Vial : 60 Sample Multiplier: 1

Instrument :
 FID_D
 ClientSampleID :
 SO-3MSD

Integration File: autoint1.e
 Quant Time: Nov 09 02:43:57 2019
 Quant Method : Z:\pestpcbsrv\HPCHEM1\FID_D\methods\Aromatic EPH 110519.M
 Quant Title : GC Extractables
 QLast Update : Wed Nov 06 03:03:26 2019
 Response via : Initial Calibration
 Integrator: ChemStation 6890 Scale Mode: Large solvent peaks clipped

Volume Inj. : 1 µl
 Signal Phase : Rxi-1ms
 Signal Info : 20M x 0.18mm x 0.18µm

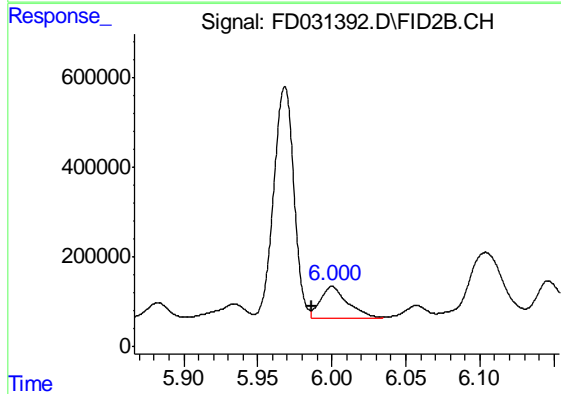




#1 1,2,3-Trimethylbenzene (C10.1)

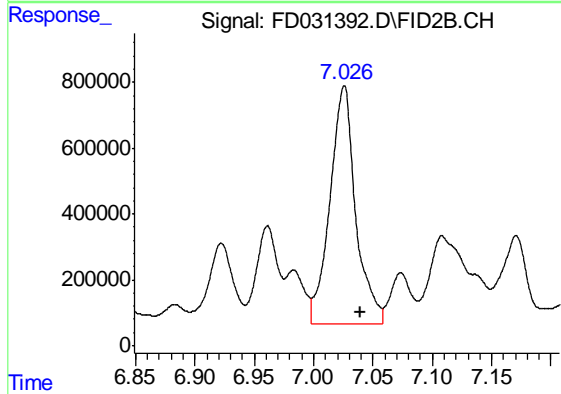
R.T.: 4.428 min
Delta R.T.: -0.019 min
Response: 3313377
Conc: 27.60 ug/ml

Instrument :
FID_D
ClientSampleId :
SO-3MSD



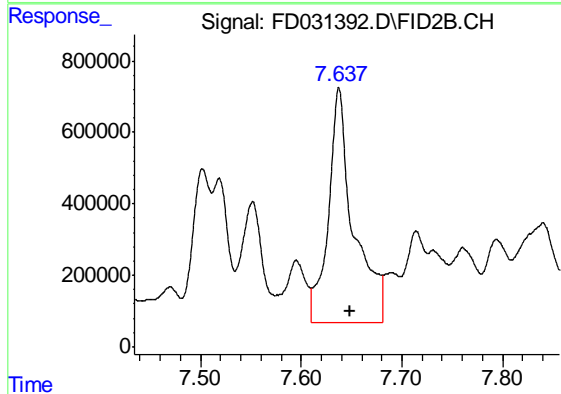
#2 Naphthalene (C11.7)

R.T.: 6.000 min
Delta R.T.: 0.014 min
Response: 903424
Conc: 7.02 ug/ml



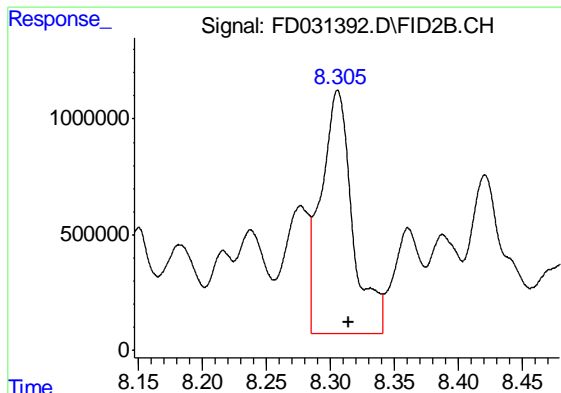
#3 2-Methylnaphthalene (C12.89)

R.T.: 7.026 min
Delta R.T.: -0.013 min
Response: 10901074
Conc: 84.88 ug/ml



#4 2-Bromonaphthalene (SURRE)

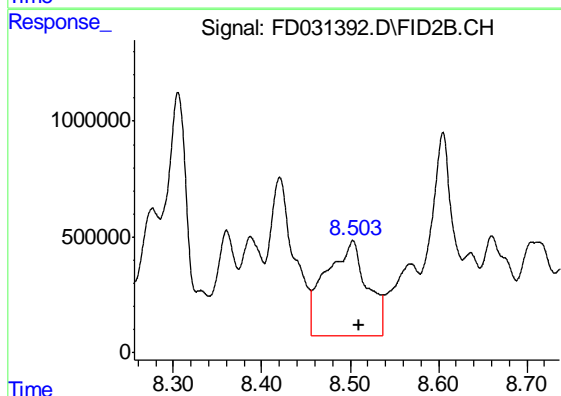
R.T.: 7.638 min
Delta R.T.: -0.011 min
Response: 11339071
Conc: 95.26 ug/ml



#5 Acenaphthylene (C15.06)

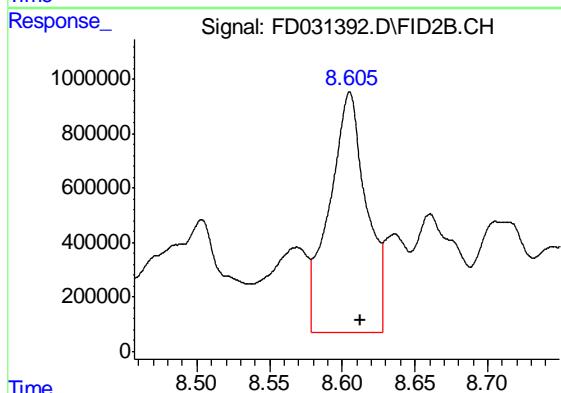
R.T.: 8.305 min
 Delta R.T.: -0.009 min
 Response: 17926878
 Conc: 142.40 ug/ml

Instrument :
 FID_D
 ClientSampleId :
 SO-3MSD



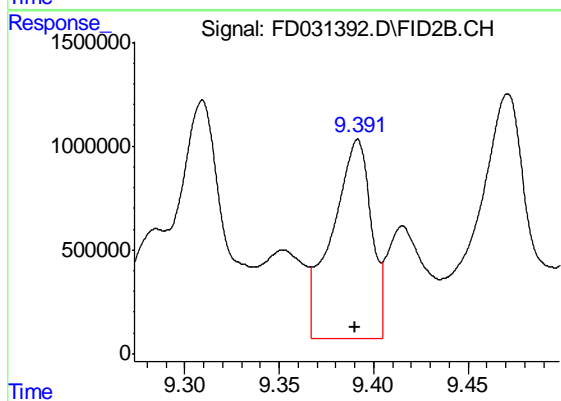
#6 2-Fluorobiphenyl (SURR)

R.T.: 8.503 min
 Delta R.T.: -0.007 min
 Response: 13341322
 Conc: 161.92 ug/ml



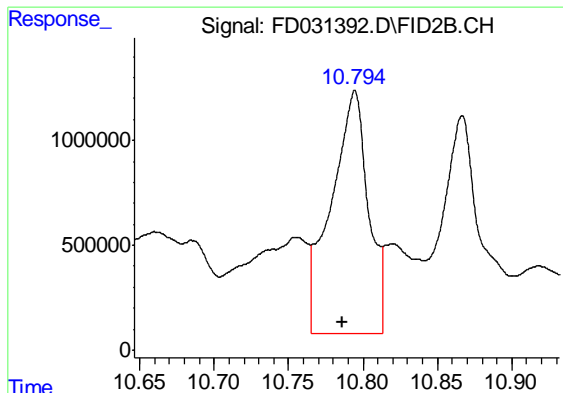
#7 Acenaphthene (C15.5)

R.T.: 8.605 min
 Delta R.T.: -0.007 min
 Response: 15522512
 Conc: 118.55 ug/ml



#8 Flouorene (C16.55)

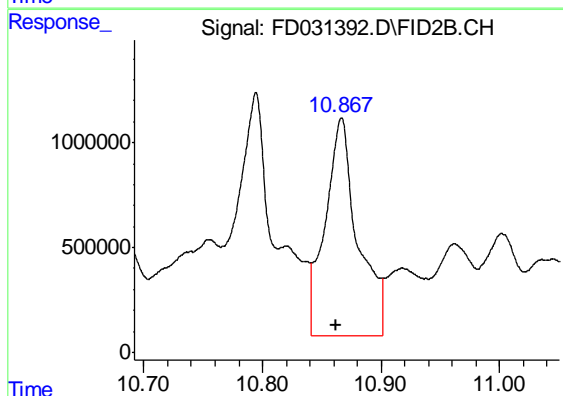
R.T.: 9.392 min
 Delta R.T.: 0.001 min
 Response: 13751788
 Conc: 105.18 ug/ml



#9 Phenanthrene (C19.36)

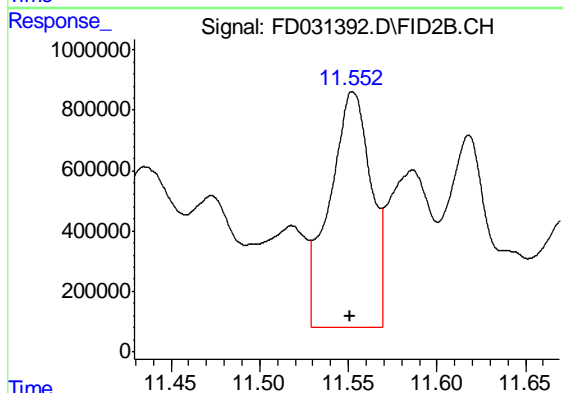
R.T.: 10.795 min
Delta R.T.: 0.008 min
Response: 20146318
Conc: 152.91 ug/ml

Instrument :
FID_D
ClientSampled :
SO-3MSD



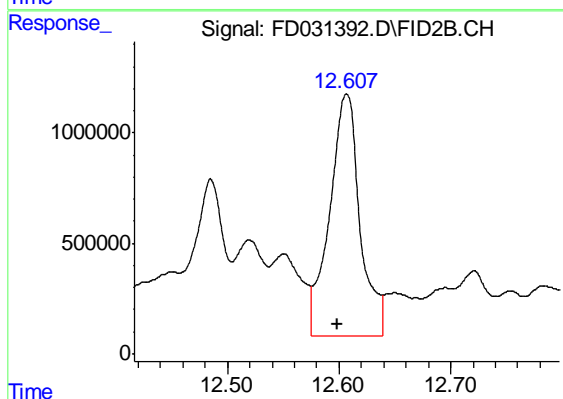
#10 Anthracene (C19.43)

R.T.: 10.867 min
Delta R.T.: 0.004 min
Response: 19783930
Conc: 153.43 ug/ml



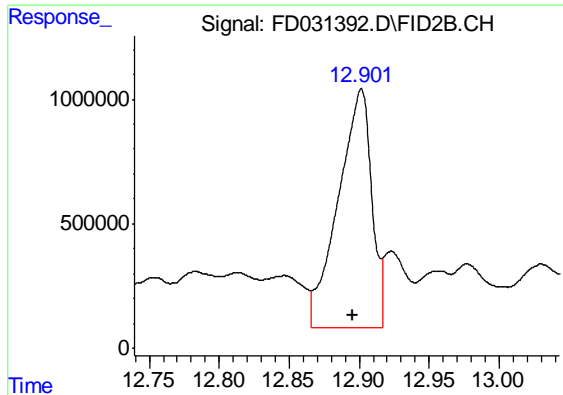
#11 ortho-Terphenyl (SURRE)

R.T.: 11.553 min
Delta R.T.: 0.002 min
Response: 12657389
Conc: 98.91 ug/ml



#12 Fluoranthene (C21.85)

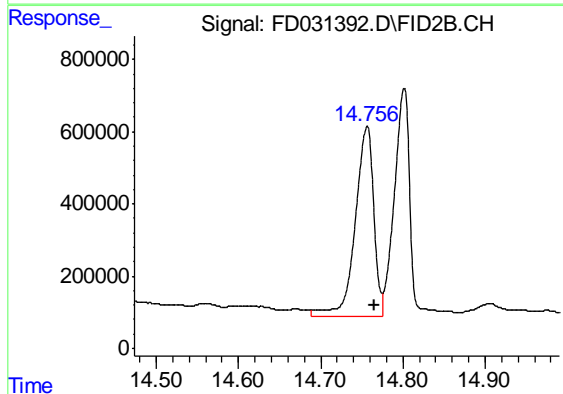
R.T.: 12.607 min
Delta R.T.: 0.009 min
Response: 20682107
Conc: 156.06 ug/ml



#13 Pyrene (C20.8)

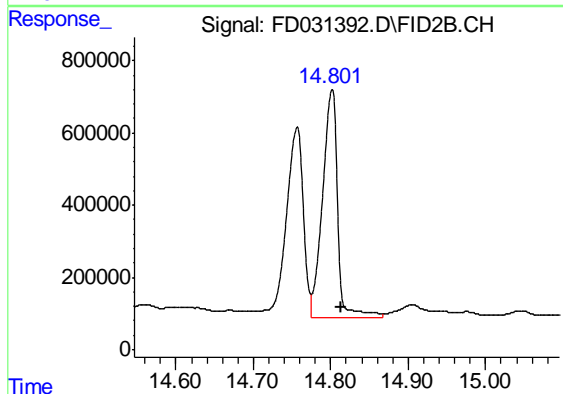
R.T.: 12.902 min
 Delta R.T.: 0.006 min
 Response: 15881272
 Conc: 120.59 ug/ml

Instrument :
 FID_D
 ClientSampleId :
 SO-3MSD



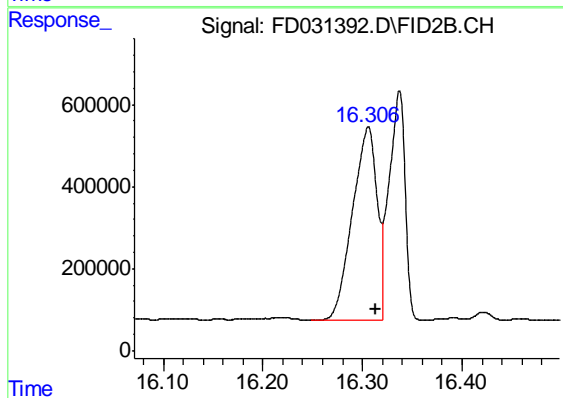
#14 Benzo[a]anthracene (C26.37)

R.T.: 14.757 min
 Delta R.T.: -0.008 min
 Response: 8299483
 Conc: 65.56 ug/ml



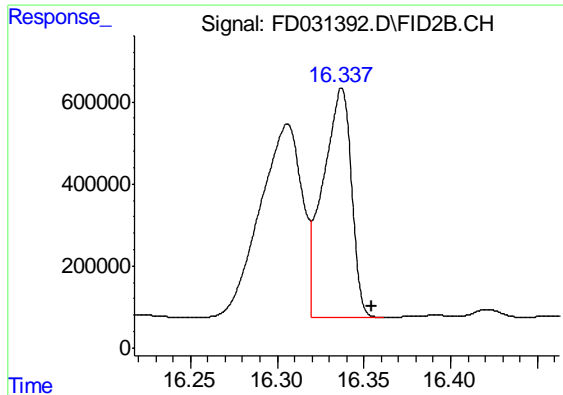
#15 Chrysene (C27.41)

R.T.: 14.802 min
 Delta R.T.: -0.011 min
 Response: 8549743
 Conc: 67.41 ug/ml



#16 benzo[b]fluoranthene (C30.41)

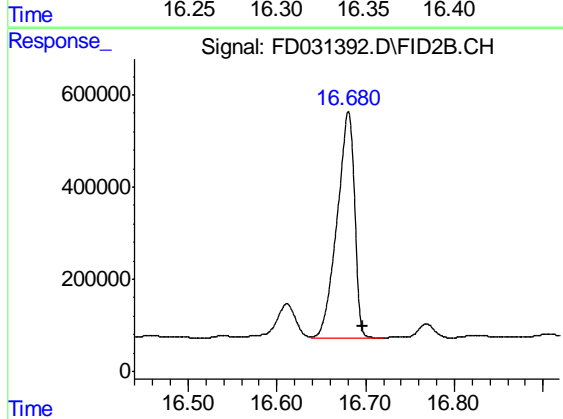
R.T.: 16.306 min
 Delta R.T.: -0.008 min
 Response: 8040591
 Conc: 64.05 ug/ml



#17 Bnezo[k]fluoranthene (C30.14)

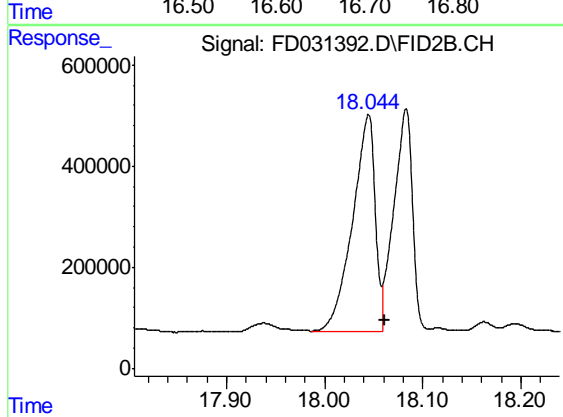
R.T.: 16.337 min
 Delta R.T.: -0.018 min
 Response: 6377683
 Conc: 50.68 ug/ml

Instrument :
 FID_D
 ClientSampled :
 SO-3MSD



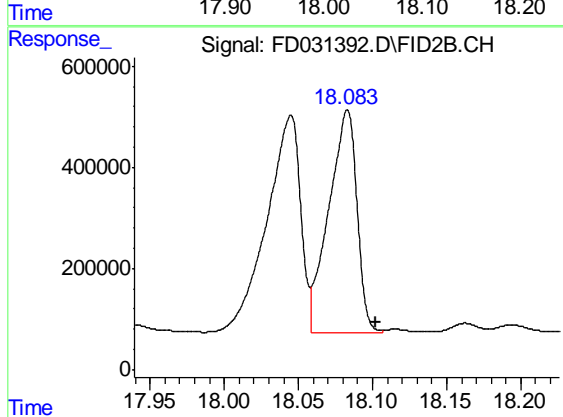
#18 Benzo[a]pyrene (C31.34)

R.T.: 16.681 min
 Delta R.T.: -0.016 min
 Response: 6708009
 Conc: 54.05 ug/ml



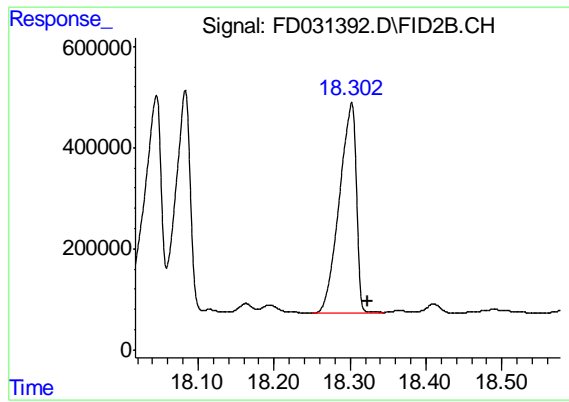
#19 Indeno[1,2,3-cd]pyrene (C35.01)

R.T.: 18.045 min
 Delta R.T.: -0.016 min
 Response: 6902300
 Conc: 56.74 ug/ml



#20 Dibenz[a,h]anthracene (C30.36)

R.T.: 18.083 min
 Delta R.T.: -0.019 min
 Response: 5844558
 Conc: 47.20 ug/ml



#21 Benzo[g,h,i]perylene (C34.01)

R.T.: 18.302 min
Delta R.T.: -0.020 min
Response: 6421209
Conc: 53.23 ug/ml

Instrument :
FID_D
ClientSampleId :
SO-3MSD