

Data Path : Z:\pestpcbsrv\HPCHEM1\FID_D\Data\FD111219AL\
 Data File : FD031467.D
 Signal(s) : FID2B.CH
 Acq On : 12 Nov 2019 18:45
 Operator : DD\AJ
 Sample : K5789-09
 Misc :
 ALS Vial : 60 Sample Multiplier: 1

Integration File: autoint1.e
 Quant Time: Nov 13 02:14:06 2019
 Quant Method : Z:\pestpcbsrv\HPCHEM1\FID_D\methods\Alaphatic EPH 110519.M
 Quant Title : GC Extractables
 QLast Update : Wed Nov 06 06:45:13 2019
 Response via : Initial Calibration
 Integrator: ChemStation 6890 Scale Mode: Large solvent peaks clipped

Volume Inj. : 1 ul
 Signal Phase : Rxi-1ms
 Signal Info : 20M x 0.18mm x 0.18um

Compound	R.T.	Response	Conc Units

System Monitoring Compounds			
9) S ortho-Terphenyl (SURR)	11.549	6515110	42.817 ug/ml
Spiked Amount	50.000	Recovery	= 85.63%
12) S 1-chlorooctadecane (S...	12.979	5577709	49.085 ug/ml
Spiked Amount	50.000	Recovery	= 98.17%

Target Compounds

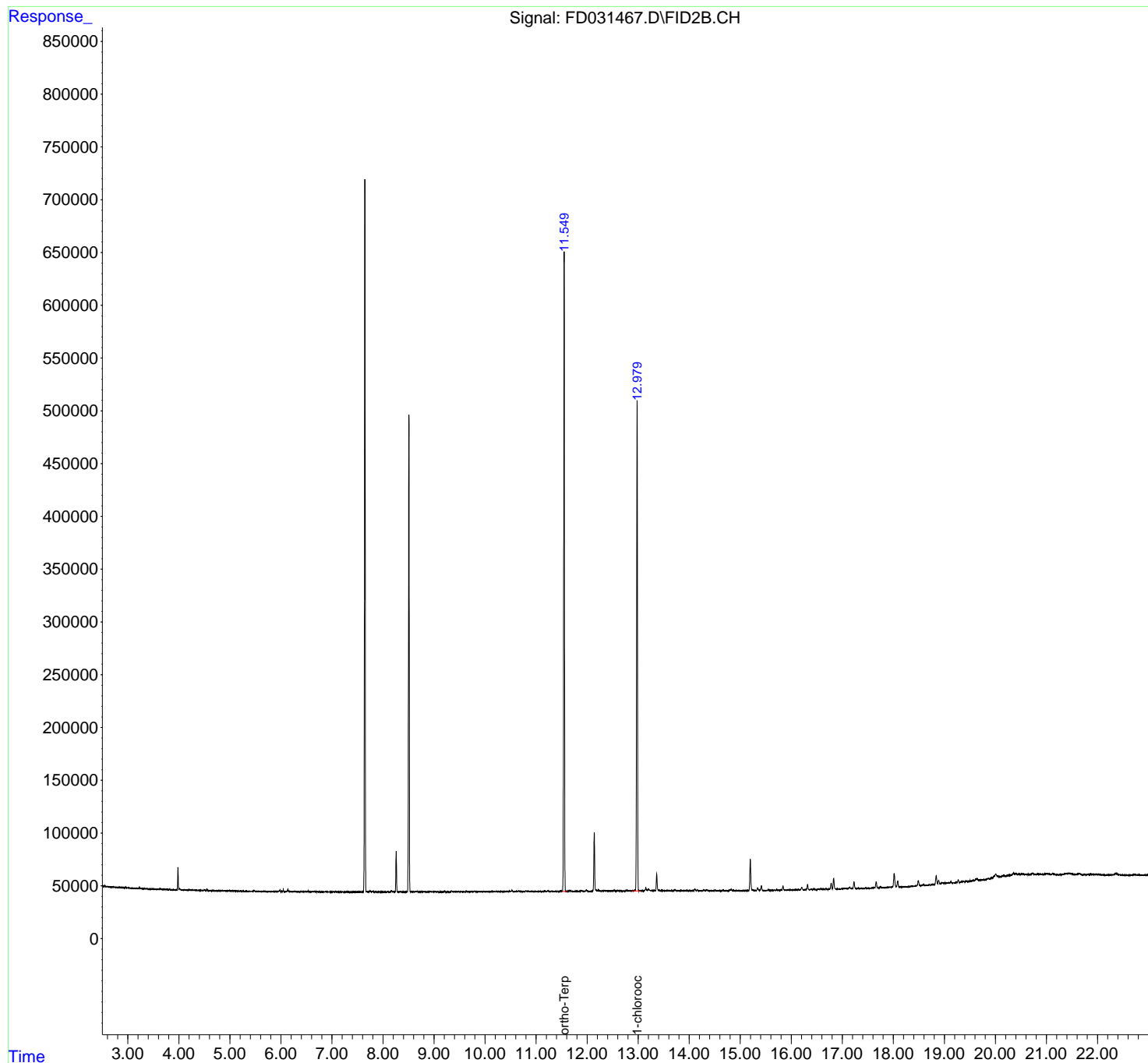
(f)=RT Delta > 1/2 Window

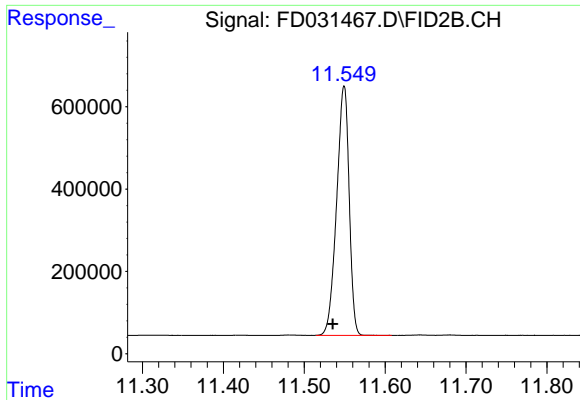
(m)=manual int.

Data Path : Z:\pestpcbsrv\HPCHEM1\FID_D\Data\FD111219AL\
Data File : FD031467.D
Signal(s) : FID2B.CH
Acq On : 12 Nov 2019 18:45
Operator : DD\AJ
Sample : K5789-09
Misc :
ALS Vial : 60 Sample Multiplier: 1

Integration File: autoint1.e
Quant Time: Nov 13 02:14:06 2019
Quant Method : Z:\pestpcbsrv\HPCHEM1\FID_D\methods\Alaphatic EPH 110519.M
Quant Title : GC Extractables
QLast Update : Wed Nov 06 06:45:13 2019
Response via : Initial Calibration
Integrator: ChemStation 6890 Scale Mode: Large solvent peaks clipped

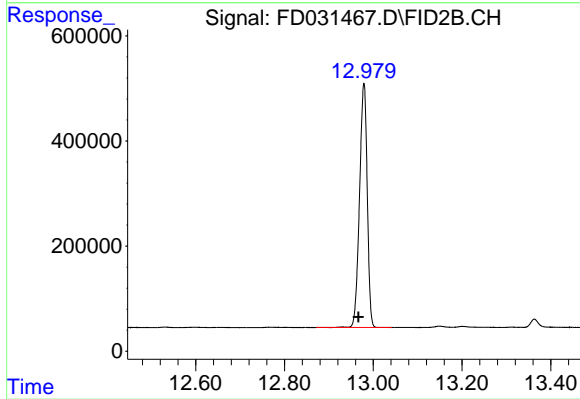
Volume Inj. : 1 ul
Signal Phase : Rxi-1ms
Signal Info : 20M x 0.18mm x 0.18um





#9 ortho-Terphenyl (SURR)

R.T.: 11.549 min
Delta R.T.: 0.014 min
Response: 6515110
Conc: 42.82 ug/ml



#12 1-chlorooctadecane (SURR)

R.T.: 12.979 min
Delta R.T.: 0.012 min
Response: 5577709
Conc: 49.08 ug/ml