

Data Path : Z:\pestpcbsrv\HPCHEM1\FID_C\Data\FC111220AL\
 Data File : FC050795.D
 Signal(s) : FID1A.CH
 Acq On : 13 Nov 2020 10:01
 Operator : DD\AJ
 Sample : 20 PPM ALIPHATIC HC STD
 Misc :
 ALS Vial : 2 Sample Multiplier: 1

Integration File: autoint1.e
 Quant Time: Nov 13 10:26:50 2020
 Quant Method : Z:\pestpcbsrv\HPCHEM1\FID_C\Method\Alaphatic EPH 110220.M
 Quant Title : GC Extractables
 QLast Update : Tue Nov 03 02:36:40 2020
 Response via : Initial Calibration
 Integrator: ChemStation 6890 Scale Mode: Large solvent peaks clipped

Volume Inj. : 1 ul
 Signal Phase : Rxi-1ms
 Signal Info : 20M x 0.18mm x 0.18um

Compound	R.T.	Response	Conc Units

System Monitoring Compounds			
9) S ortho-Terphenyl (SURR)	11.614	2386543	19.430 ug/ml
Spiked Amount	50.000	Recovery	= 38.86%
12) S 1-chlorooctadecane (S...	13.048	1864171	19.308 ug/ml
Spiked Amount	50.000	Recovery	= 38.62%
Target Compounds			
1) T n-Nonane (C9)	3.360	2242705	21.077 ug/ml
2) T n-Decane (C10)	4.431	2283354	21.470 ug/ml
3) T A~Naphthalene (C11.7)	6.025	2440371	21.191 ug/ml
4) T n-Dodecane (C12)	6.452	2332105	21.509 ug/ml
5) T A~2-methylnaphthalene...	7.084	2454214	21.391 ug/ml
6) T n-Tetradecane (C14)	8.249	2318727	21.498 ug/ml
7) T n-Hexadecane (C16)	9.850	2275630	21.377 ug/ml
8) T n-Octadecane (C18)	11.293	2327201	20.688 ug/ml
10) T n-Eicosane (C20)	12.603	2281706	19.991 ug/ml
11) T n-Heneicosane (C21)	13.214	2235225	19.593 ug/ml
13) T n-Docosane (C22)	13.800	2224937	19.496 ug/ml
14) T n-Tetracosane (C24)	14.902	2135286	18.698 ug/ml
15) T n-Hexacosane (C26)	15.922	2084118	18.381 ug/ml
16) T n-Octacosane (C28)	16.872	2076614	18.301 ug/ml
17) T n-Tricontane (C30)	17.758	2079753	18.706 ug/ml
18) T n-Dotriacontane (C32)	18.589	1976062	19.154 ug/ml
19) T n-Tetratriacontane (C34)	19.372	1850396	19.230 ug/ml
20) T n-Hexatriacontane (C36)	20.110	1779689	19.809 ug/ml
21) T n-Octatriacontane (C38)	20.853	1612822	19.397 ug/ml
22) T n-Tetracontane (C40)	21.781	1846287	22.063 ug/ml

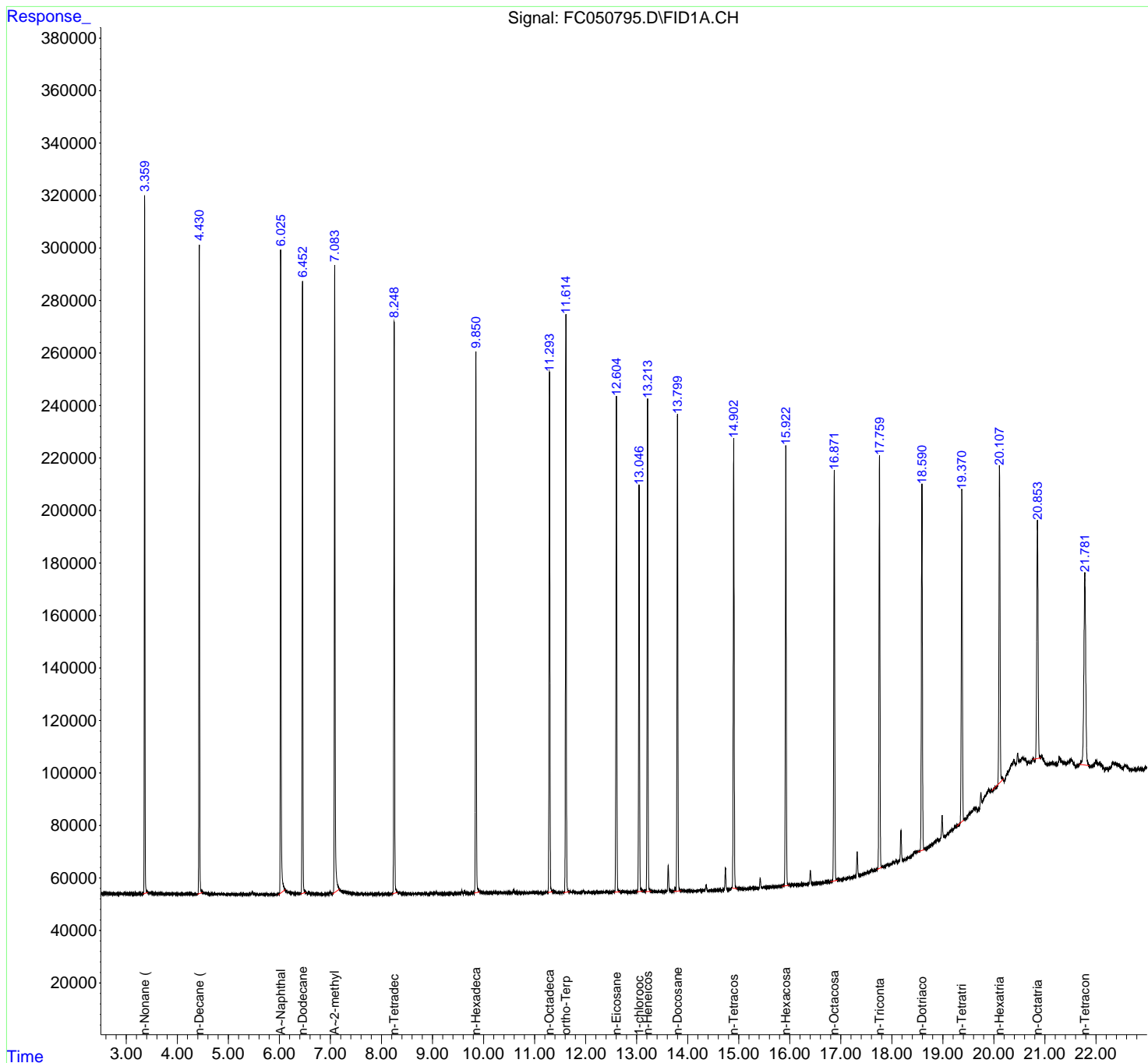
(f)=RT Delta > 1/2 Window

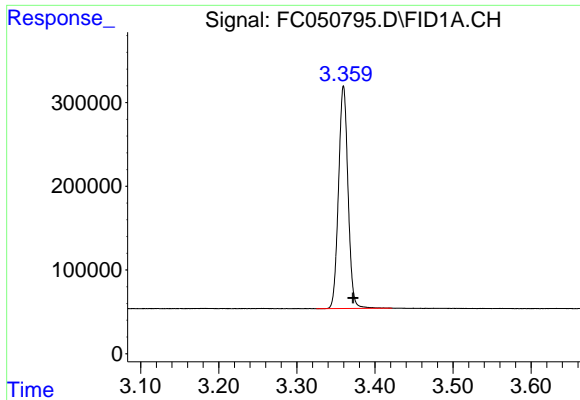
(m)=manual int.

Data Path : Z:\pestpcbsrv\HPCHEM1\FID_C\Data\FC111220AL\
 Data File : FC050795.D
 Signal(s) : FID1A.CH
 Acq On : 13 Nov 2020 10:01
 Operator : DD\AJ
 Sample : 20 PPM ALIPHATIC HC STD
 Misc :
 ALS Vial : 2 Sample Multiplier: 1

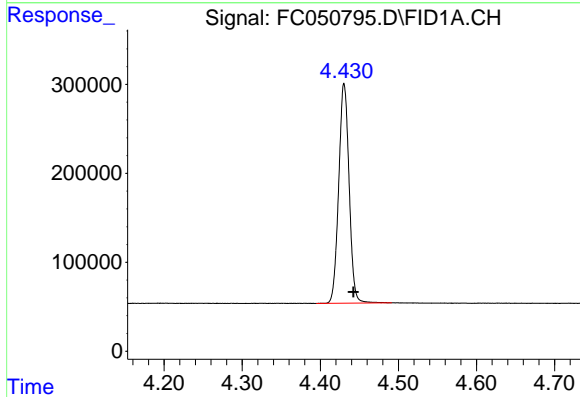
Integration File: autoint1.e
 Quant Time: Nov 13 10:26:50 2020
 Quant Method : Z:\pestpcbsrv\HPCHEM1\FID_C\Method\Aliphatic EPH 110220.M
 Quant Title : GC Extractables
 QLast Update : Tue Nov 03 02:36:40 2020
 Response via : Initial Calibration
 Integrator: ChemStation 6890 Scale Mode: Large solvent peaks clipped

Volume Inj. : 1 ul
 Signal Phase : Rxi-1ms
 Signal Info : 20M x 0.18mm x 0.18um

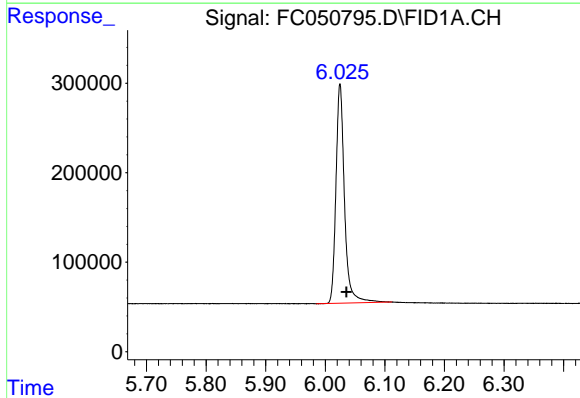




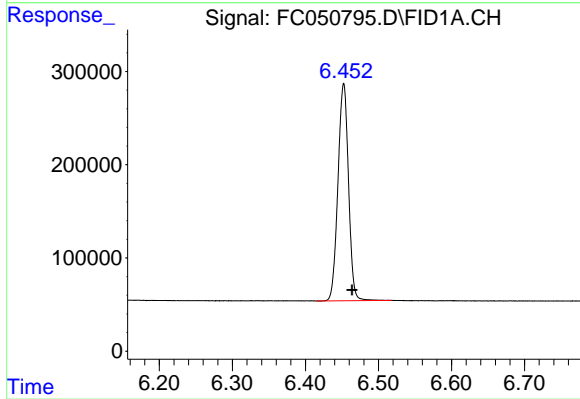
#1 n-Nonane (C9)
R.T.: 3.360 min
Delta R.T.: -0.012 min
Response: 2242705
Conc: 21.08 ug/ml



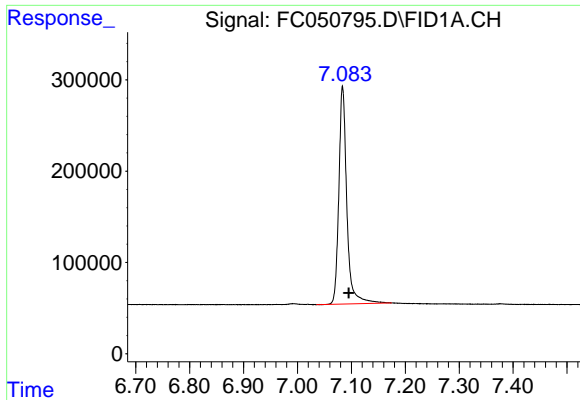
#2 n-Decane (C10)
R.T.: 4.431 min
Delta R.T.: -0.012 min
Response: 2283354
Conc: 21.47 ug/ml



#3 A~Naphthalene (C11.7)
R.T.: 6.025 min
Delta R.T.: -0.010 min
Response: 2440371
Conc: 21.19 ug/ml

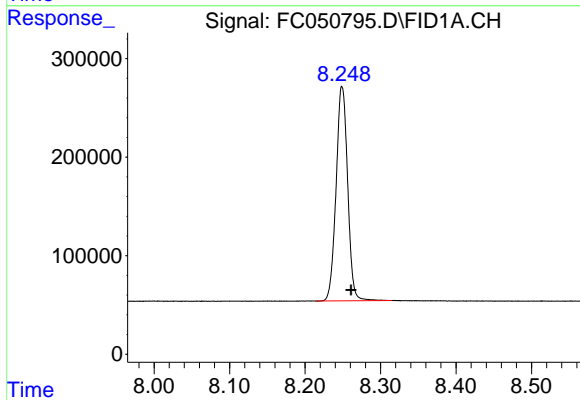


#4 n-Dodecane (C12)
R.T.: 6.452 min
Delta R.T.: -0.012 min
Response: 2332105
Conc: 21.51 ug/ml



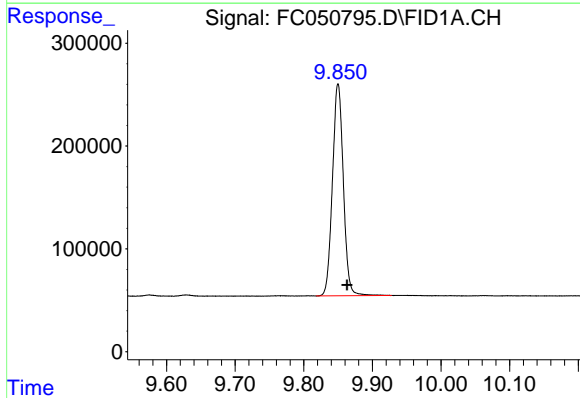
#5 A~2-methylnaphthalene (C12.89)

R.T.: 7.084 min
Delta R.T.: -0.011 min
Response: 2454214
Conc: 21.39 ug/ml



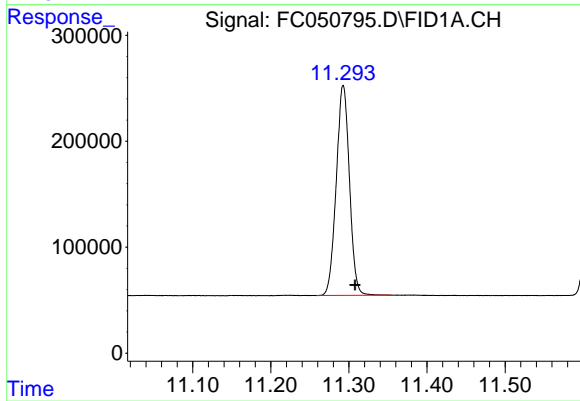
#6 n-Tetradecane (C14)

R.T.: 8.249 min
Delta R.T.: -0.012 min
Response: 2318727
Conc: 21.50 ug/ml



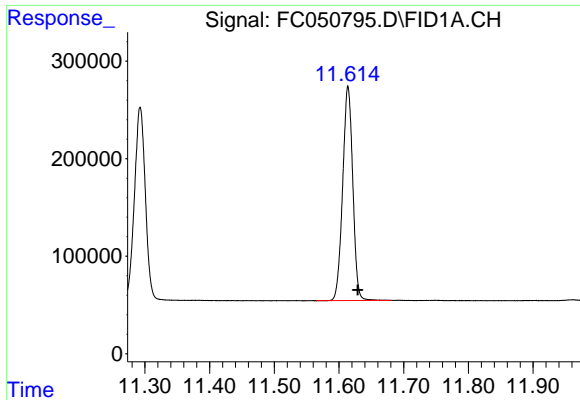
#7 n-Hexadecane (C16)

R.T.: 9.850 min
Delta R.T.: -0.013 min
Response: 2275630
Conc: 21.38 ug/ml



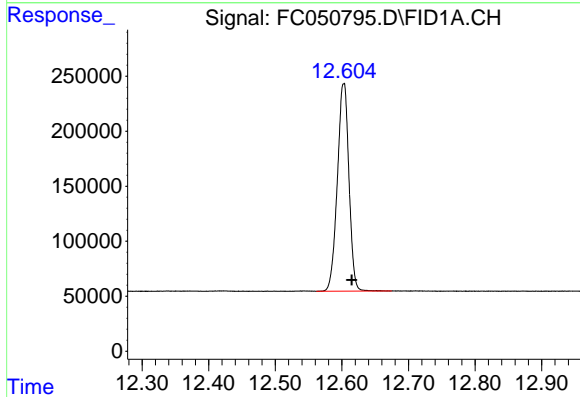
#8 n-Octadecane (C18)

R.T.: 11.293 min
Delta R.T.: -0.015 min
Response: 2327201
Conc: 20.69 ug/ml



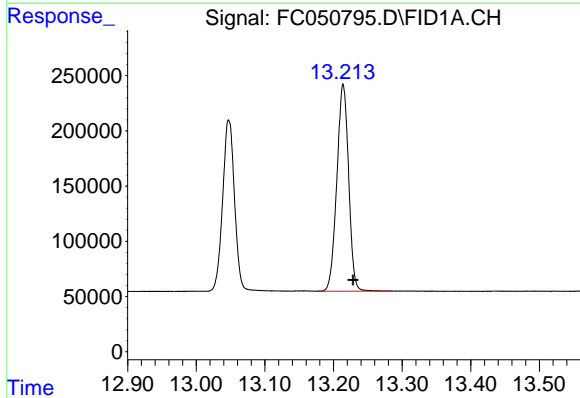
#9 ortho-Terphenyl (SURR)

R.T.: 11.614 min
 Delta R.T.: -0.015 min
 Response: 2386543
 Conc: 19.43 ug/ml



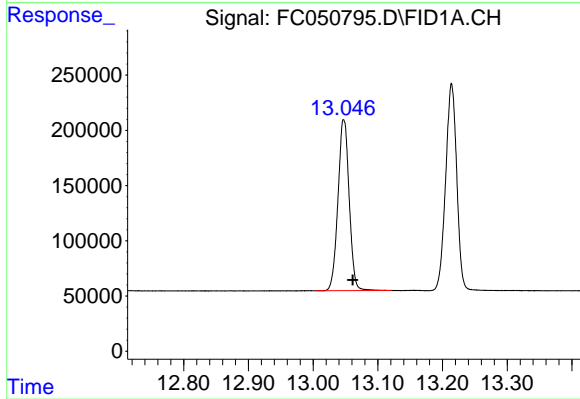
#10 n-Eicosane (C20)

R.T.: 12.603 min
 Delta R.T.: -0.012 min
 Response: 2281706
 Conc: 19.99 ug/ml



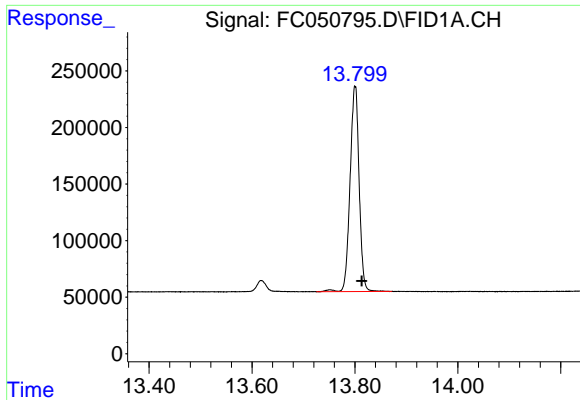
#11 n-Heneicosane (C21)

R.T.: 13.214 min
 Delta R.T.: -0.014 min
 Response: 2235225
 Conc: 19.59 ug/ml



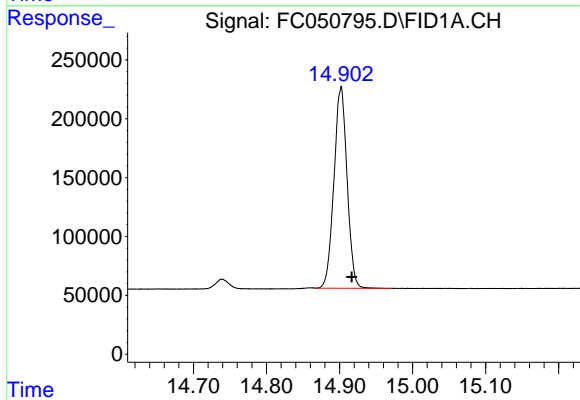
#12 1-chlorooctadecane (SURR)

R.T.: 13.048 min
 Delta R.T.: -0.014 min
 Response: 1864171
 Conc: 19.31 ug/ml



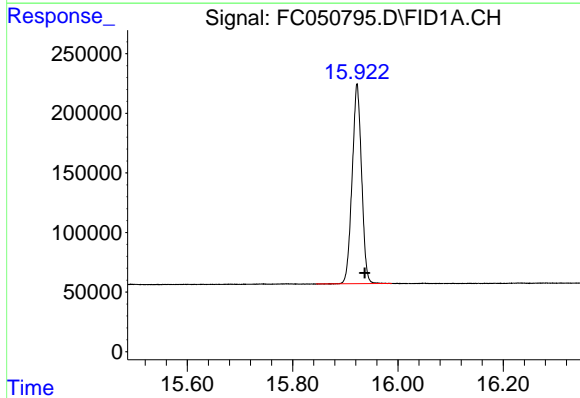
#13 n-Docosane (C22)

R.T.: 13.800 min
Delta R.T.: -0.013 min
Response: 2224937
Conc: 19.50 ug/ml



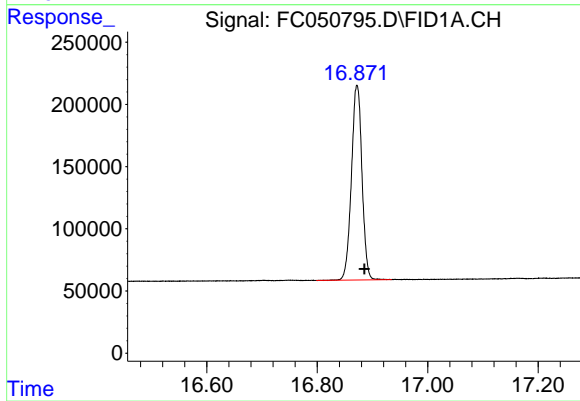
#14 n-Tetracosane (C24)

R.T.: 14.902 min
Delta R.T.: -0.015 min
Response: 2135286
Conc: 18.70 ug/ml



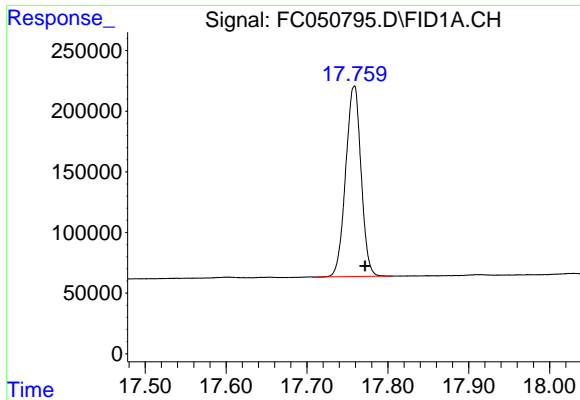
#15 n-Hexacosane (C26)

R.T.: 15.922 min
Delta R.T.: -0.014 min
Response: 2084118
Conc: 18.38 ug/ml

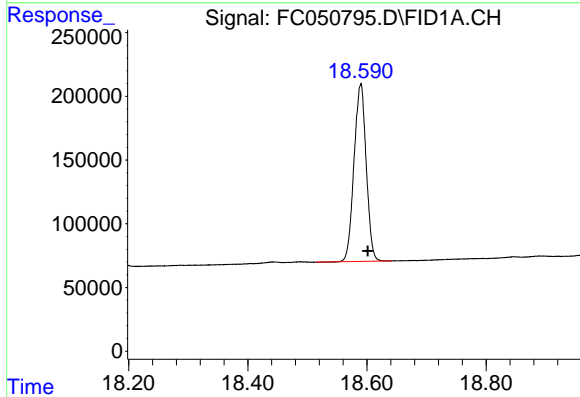


#16 n-Octacosane (C28)

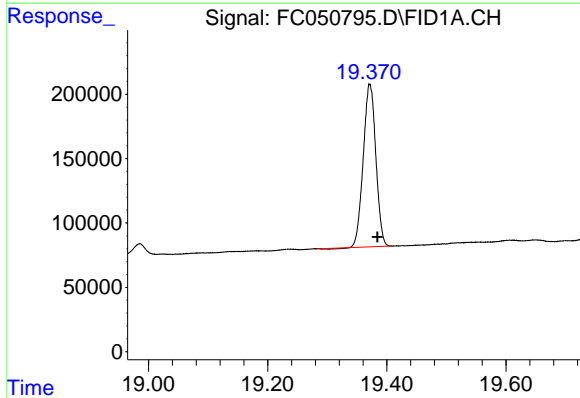
R.T.: 16.872 min
Delta R.T.: -0.013 min
Response: 2076614
Conc: 18.30 ug/ml



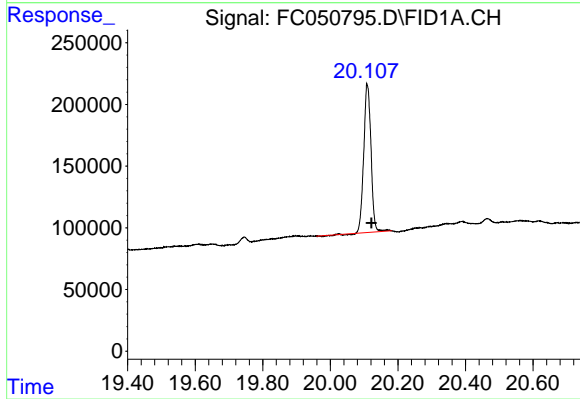
#17 n-Tricontane (C30)
R.T.: 17.758 min
Delta R.T.: -0.013 min
Response: 2079753
Conc: 18.71 ug/ml



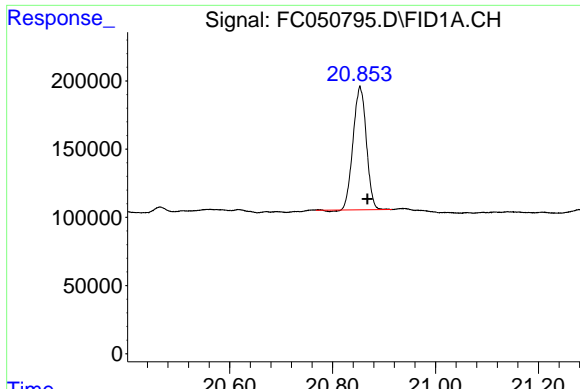
#18 n-Dotriacontane (C32)
R.T.: 18.589 min
Delta R.T.: -0.012 min
Response: 1976062
Conc: 19.15 ug/ml



#19 n-Tetratriacontane (C34)
R.T.: 19.372 min
Delta R.T.: -0.013 min
Response: 1850396
Conc: 19.23 ug/ml

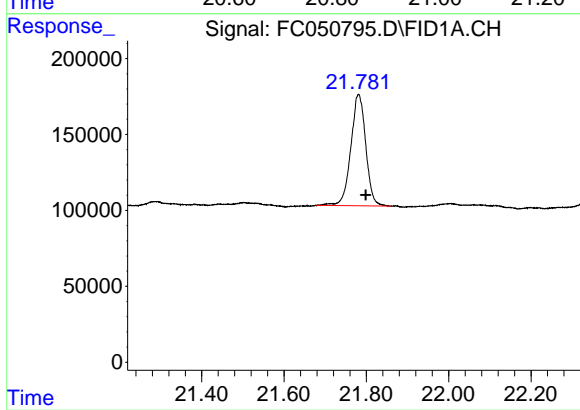


#20 n-Hexatriacontane (C36)
R.T.: 20.110 min
Delta R.T.: -0.012 min
Response: 1779689
Conc: 19.81 ug/ml



#21 n-Octatriacontane (C38)

R.T.: 20.853 min
Delta R.T.: -0.014 min
Response: 1612822
Conc: 19.40 ug/ml



#22 n-Tetracontane (C40)

R.T.: 21.781 min
Delta R.T.: -0.018 min
Response: 1846287
Conc: 22.06 ug/ml