

Data Path : Z:\pestpcbsrv\HPCHEM1\FID\_D\Data\FD111220AL\  
 Data File : FD035501.D  
 Signal(s) : FID2B.CH  
 Acq On : 13 Nov 2020 8:08  
 Operator : DD\AJ  
 Sample : L4704-02DL 10X  
 Misc :  
 ALS Vial : 79 Sample Multiplier: 1

Integration File: autoint1.e  
 Quant Time: Nov 13 10:23:41 2020  
 Quant Method : Z:\pestpcbsrv\HPCHEM1\FID\_D\methods\Alaphatic EPH 110220.M  
 Quant Title : GC Extractables  
 QLast Update : Tue Nov 03 11:48:08 2020  
 Response via : Initial Calibration  
 Integrator: ChemStation 6890 Scale Mode: Large solvent peaks clipped

Volume Inj. : 1 ul  
 Signal Phase : Rxi-1ms  
 Signal Info : 20M x 0.18mm x 0.18um

Compound	R.T.	Response	Conc Units
-----			
System Monitoring Compounds			
9) S ortho-Terphenyl (SURR)	11.537	301168	2.315 ug/ml
Spiked Amount	50.000	Recovery =	4.63%
12) S 1-chlorooctadecane (S...	12.969	226170	2.170 ug/ml
Spiked Amount	50.000	Recovery =	4.34%
Target Compounds			
21) T n-Octatriacontane (C38)	20.733	2544102	28.642 ug/ml
-----			

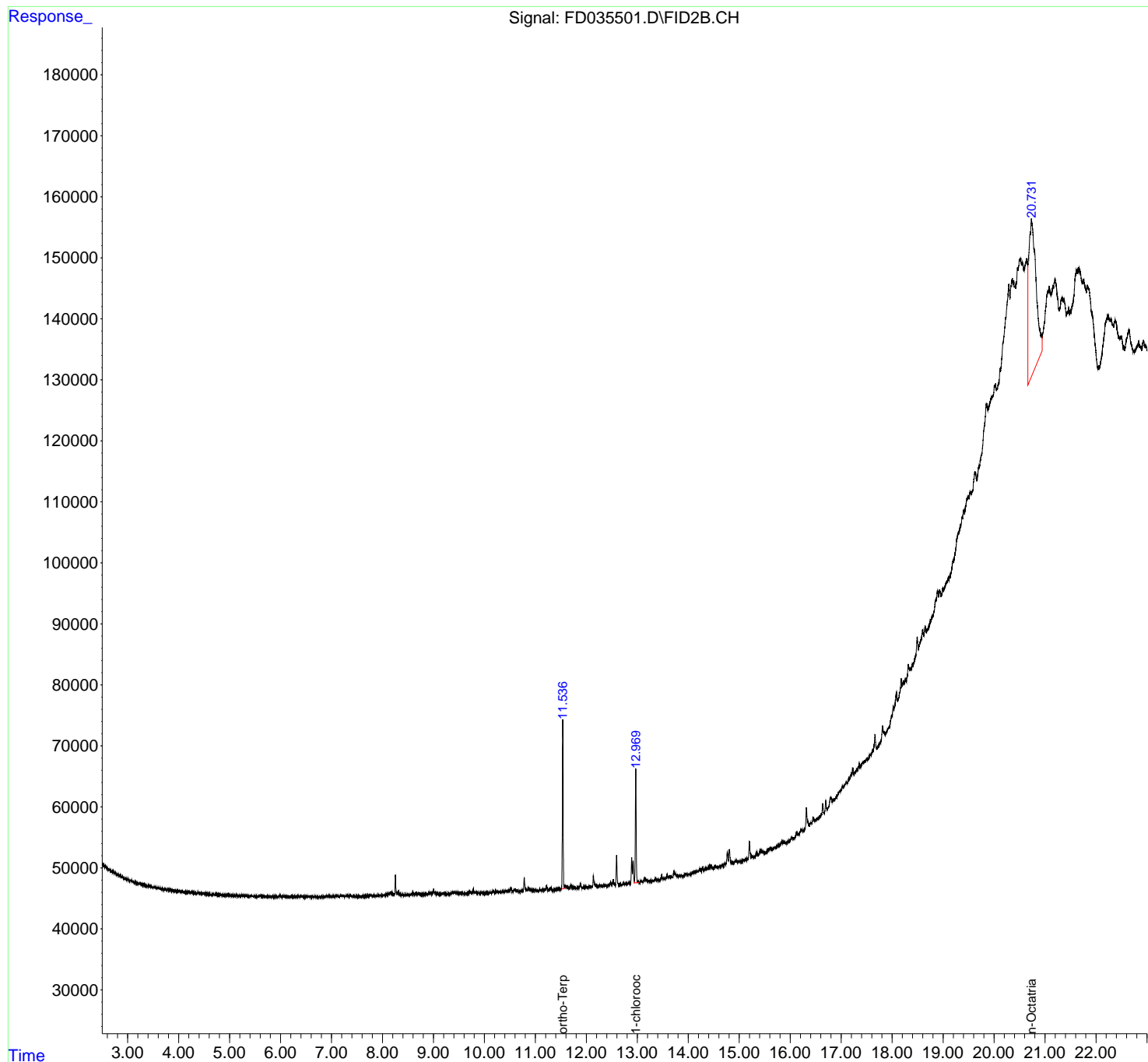
(f)=RT Delta > 1/2 Window

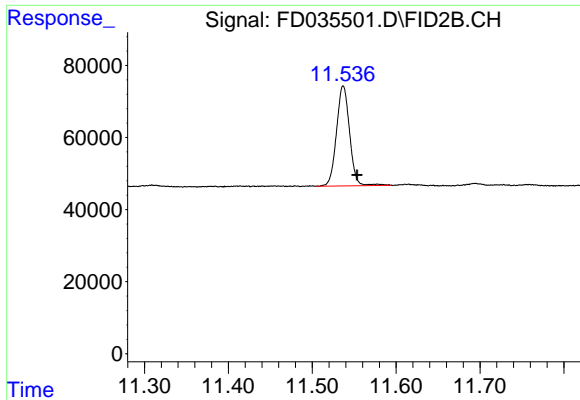
(m)=manual int.

Data Path : Z:\pestpcbsrv\HPCHEM1\FID\_D\Data\FD111220AL\  
 Data File : FD035501.D  
 Signal(s) : FID2B.CH  
 Acq On : 13 Nov 2020 8:08  
 Operator : DD\AJ  
 Sample : L4704-02DL 10X  
 Misc :  
 ALS Vial : 79 Sample Multiplier: 1

Integration File: autoint1.e  
 Quant Time: Nov 13 10:23:41 2020  
 Quant Method : Z:\pestpcbsrv\HPCHEM1\FID\_D\methods\Alaphatic EPH 110220.M  
 Quant Title : GC Extractables  
 QLast Update : Tue Nov 03 11:48:08 2020  
 Response via : Initial Calibration  
 Integrator: ChemStation 6890 Scale Mode: Large solvent peaks clipped

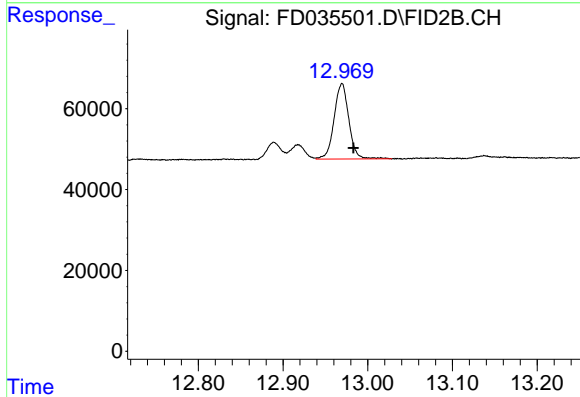
Volume Inj. : 1 ul  
 Signal Phase : Rxi-1ms  
 Signal Info : 20M x 0.18mm x 0.18um





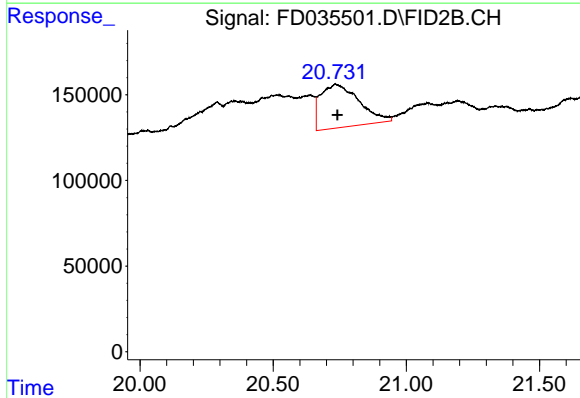
#9 ortho-Terphenyl (SURR)

R.T.: 11.537 min  
 Delta R.T.: -0.016 min  
 Response: 301168  
 Conc: 2.32 ug/ml



#12 1-chlorooctadecane (SURR)

R.T.: 12.969 min  
 Delta R.T.: -0.014 min  
 Response: 226170  
 Conc: 2.17 ug/ml



#21 n-Octatriacontane (C38)

R.T.: 20.733 min  
 Delta R.T.: -0.008 min  
 Response: 2544102  
 Conc: 28.64 ug/ml