

Data Path : Z:\pestpcbsrv\HPCHEM1\FID_D\Data\FD111220AL\
 Data File : FD035499.D
 Signal(s) : FID2B.CH
 Acq On : 13 Nov 2020 6:53
 Operator : DD\AJ
 Sample : L4595-01DL 10X
 Misc :
 ALS Vial : 77 Sample Multiplier: 1

Integration File: autoint1.e
 Quant Time: Nov 13 08:12:13 2020
 Quant Method : Z:\pestpcbsrv\HPCHEM1\FID_D\methods\Alaphatic EPH 110220.M
 Quant Title : GC Extractables
 QLast Update : Tue Nov 03 11:48:08 2020
 Response via : Initial Calibration
 Integrator: ChemStation 6890 Scale Mode: Large solvent peaks clipped

Volume Inj. : 1 ul
 Signal Phase : Rxi-1ms
 Signal Info : 20M x 0.18mm x 0.18um

Compound	R.T.	Response	Conc Units

System Monitoring Compounds			
9) S ortho-Terphenyl (SURR)	11.538	397404	3.055 ug/mlm
Spiked Amount	50.000	Recovery	= 6.11%
12) S 1-chlorooctadecane (S...	12.957	1297752	12.452 ug/mlm
Spiked Amount	50.000	Recovery	= 24.90%

Target Compounds

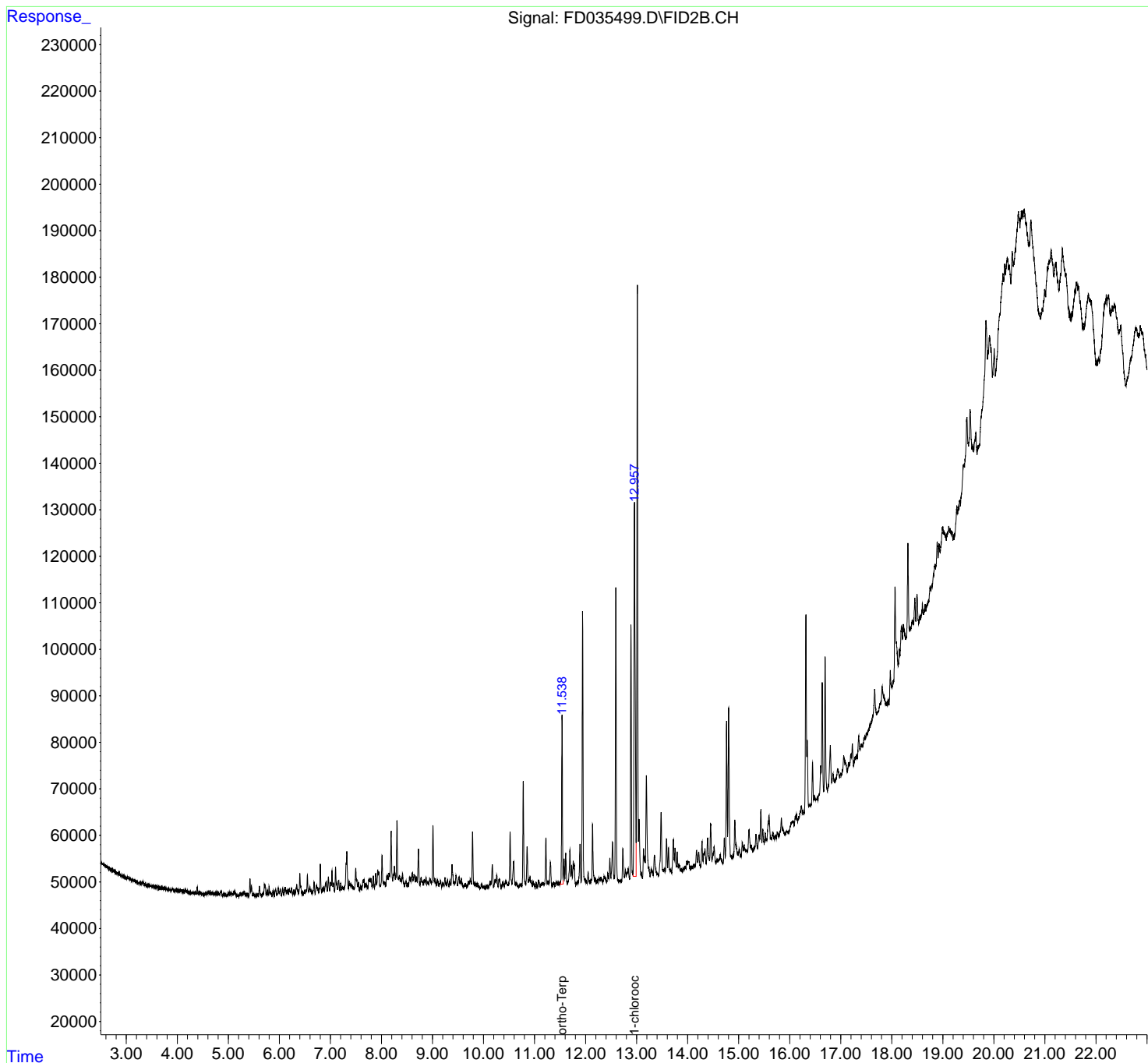
(f)=RT Delta > 1/2 Window

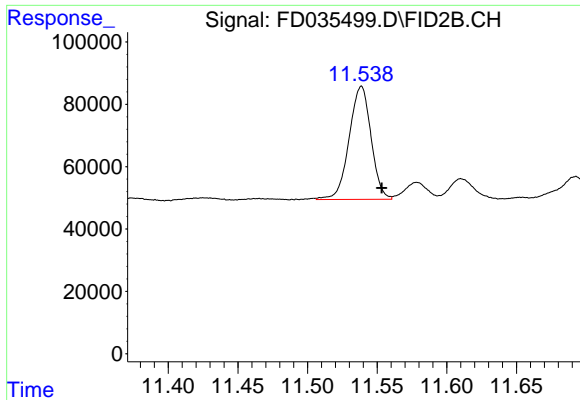
(m)=manual int.

Data Path : Z:\pestpcbsrv\HPCHEM1\FID_D\Data\FD111220AL\
Data File : FD035499.D
Signal(s) : FID2B.CH
Acq On : 13 Nov 2020 6:53
Operator : DD\AJ
Sample : L4595-01DL 10X
Misc :
ALS Vial : 77 Sample Multiplier: 1

Integration File: autoint1.e
Quant Time: Nov 13 08:12:13 2020
Quant Method : Z:\pestpcbsrv\HPCHEM1\FID_D\methods\Alaphatic EPH 110220.M
Quant Title : GC Extractables
QLast Update : Tue Nov 03 11:48:08 2020
Response via : Initial Calibration
Integrator: ChemStation 6890 Scale Mode: Large solvent peaks clipped

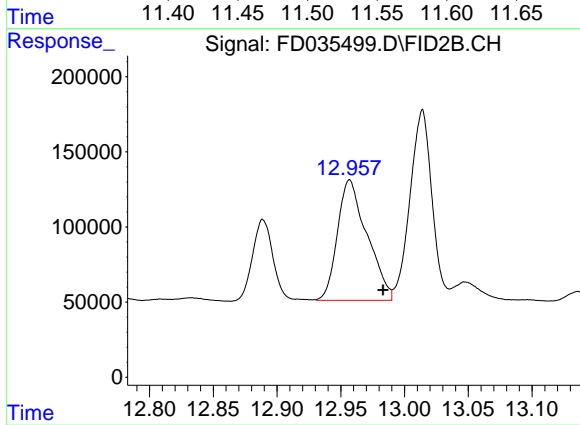
Volume Inj. : 1 ul
Signal Phase : Rxi-1ms
Signal Info : 20M x 0.18mm x 0.18um





#9 ortho-Terphenyl (SURR)

R.T.: 11.538 min
Delta R.T.: -0.015 min
Response: 397404
Conc: 3.05 ug/ml m



#12 1-chlorooctadecane (SURR)

R.T.: 12.957 min
Delta R.T.: -0.027 min
Response: 1297752
Conc: 12.45 ug/ml m