

Data Path : Z:\pestpcbsrv\HPCHEM1\FID_C\Data\FC111224AL\
 Data File : FC067714.D
 Signal(s) : FID1A.ch
 Acq On : 12 Nov 2024 18:00
 Operator : YP/AJ
 Sample : 20 PPM ALIPHATIC HC STD
 Misc :
 ALS Vial : 2 Sample Multiplier: 1

Instrument :
 FID_D
 ClientSampleId :

Integration File: autoint1.e
 Quant Time: Nov 12 23:55:38 2024
 Quant Method : Z:\pestpcbsrv\HPCHEM1\FID_C\Method\Aliphatic EPH 102324.M
 Quant Title : GC Extractables
 QLast Update : Wed Oct 23 18:12:58 2024
 Response via : Initial Calibration
 Integrator: ChemStation

Volume Inj. : 1 ul
 Signal Phase : Rxi-1ms
 Signal Info : 20M x 0.18mm x 0.18um

Compound	R.T.	Response	Conc Units

System Monitoring Compounds			
9) S ortho-Terphenyl (SURR)	11.487	2960777	20.178 ug/ml
Spiked Amount	50.000	Recovery =	40.36%
12) S 1-chlorooctadecane (S...	12.926	2219724	20.555 ug/ml
Spiked Amount	50.000	Recovery =	41.11%
Target Compounds			
1) T n-Nonane (C9)	3.270	2736516	20.313 ug/ml
2) T n-Decane (C10)	4.334	2782110	20.420 ug/ml
3) T A~Naphthalene (C11.7)	5.911	3034496	20.477 ug/ml
4) T n-Dodecane (C12)	6.348	2765689	20.420 ug/ml
5) T A~2-methylnaphthalene...	6.965	2892454	20.482 ug/ml
6) T n-Tetradecane (C14)	8.140	2686124	20.464 ug/ml
7) T n-Hexadecane (C16)	9.737	2712926	20.536 ug/ml
8) T n-Octadecane (C18)	11.176	2716429	20.561 ug/ml
10) T n-Eicosane (C20)	12.484	2577432	20.427 ug/ml
11) T n-Heneicosane (C21)	13.094	2519043	20.411 ug/ml
13) T n-Docosane (C22)	13.679	2504815	20.456 ug/ml
14) T n-Tetracosane (C24)	14.781	2497063	20.601 ug/ml
15) T n-Hexacosane (C26)	15.800	2452721	20.601 ug/ml
16) T n-Octacosane (C28)	16.748	2457295	20.887 ug/ml
17) T n-Tricontane (C30)	17.634	2597955	21.494 ug/ml
18) T n-Dotriacontane (C32)	18.465	2572408	21.741 ug/ml
19) T n-Tetratriacontane (C34)	19.247	2286642	21.834 ug/ml
20) T n-Hexatriacontane (C36)	19.985	1952987	21.455 ug/ml
21) T n-Octatriacontane (C38)	20.705	2343541	27.061 ug/ml
22) T n-Tetracontane (C40)	21.588	1770087	20.822 ug/ml

(f)=RT Delta > 1/2 Window

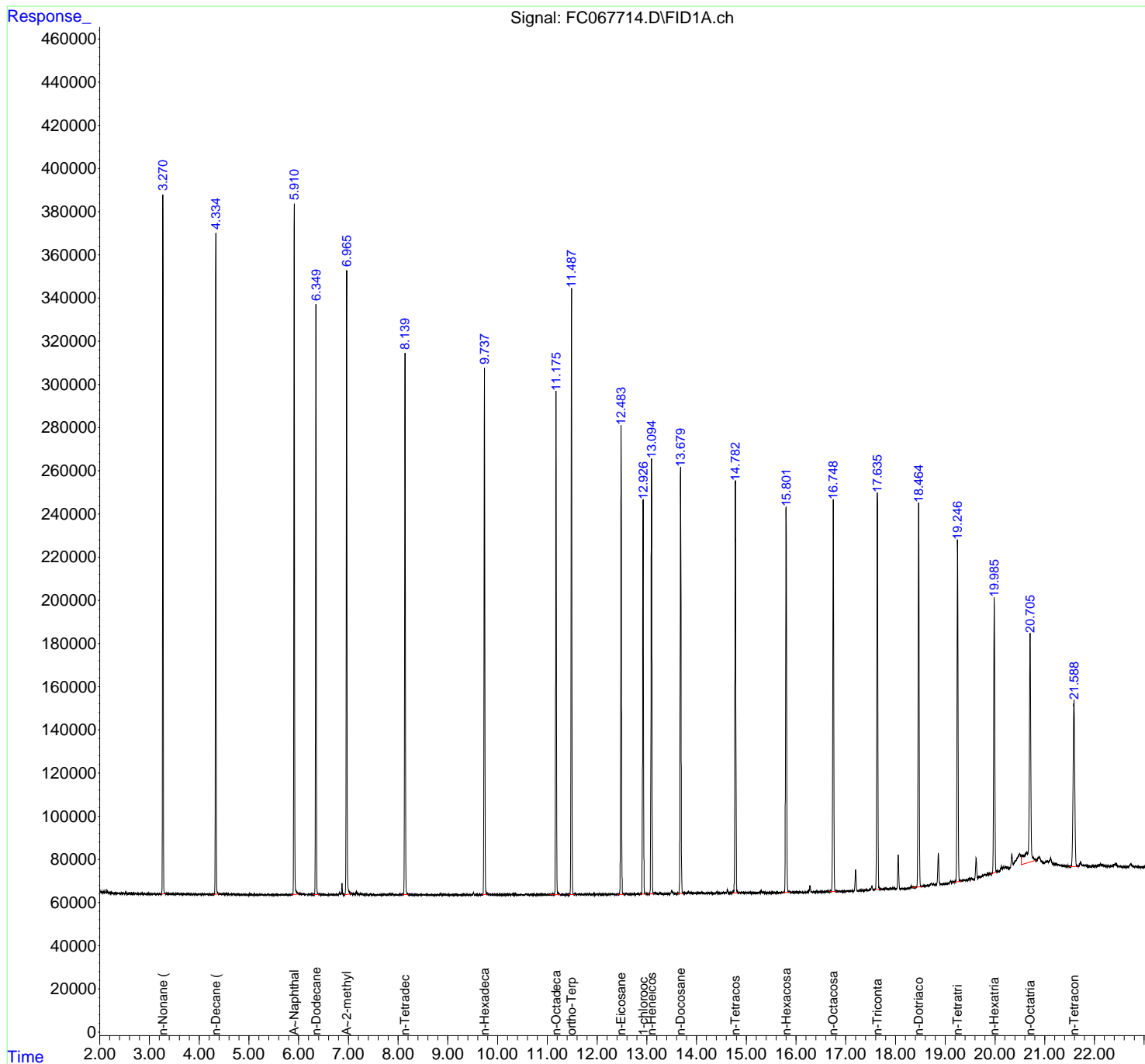
(m)=manual int.

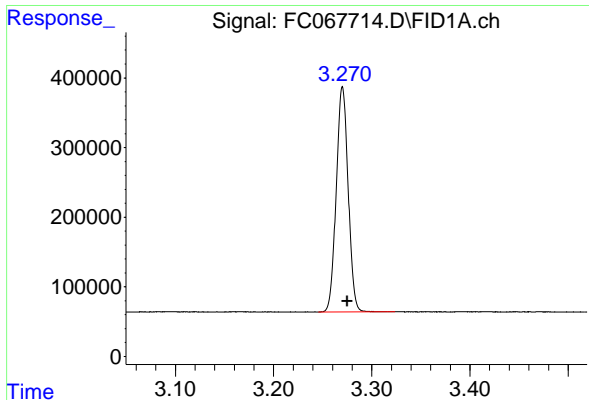
Data Path : Z:\pestpcbsrv\HPCHEM1\FID_C\Data\FC11224AL\
 Data File : FC067714.D
 Signal(s) : FID1A.ch
 Acq On : 12 Nov 2024 18:00
 Operator : YP/AJ
 Sample : 20 PPM ALIPHATIC HC STD
 Misc :
 ALS Vial : 2 Sample Multiplier: 1

Instrument :
 FID_D
 ClientSampleId :

Integration File: autoint1.e
 Quant Time: Nov 12 23:55:38 2024
 Quant Method : Z:\pestpcbsrv\HPCHEM1\FID_C\Method\Aliphatic EPH 102324.M
 Quant Title : GC Extractables
 QLast Update : Wed Oct 23 18:12:58 2024
 Response via : Initial Calibration
 Integrator: ChemStation

Volume Inj. : 1 ul
 Signal Phase : Rxi-1ms
 Signal Info : 20M x 0.18mm x 0.18um

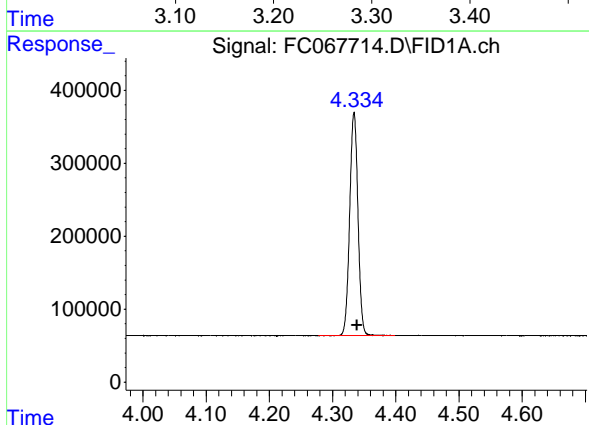




#1 n-Nonane (C9)

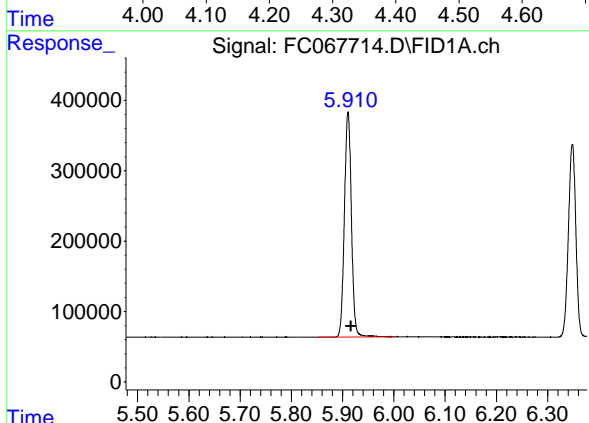
R.T.: 3.270 min
Delta R.T.: -0.005 min
Response: 2736516
Conc: 20.31 ug/ml

Instrument :
FID_D
ClientSampleId :



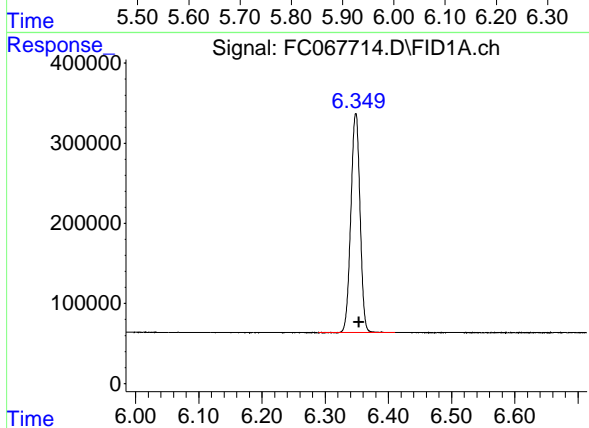
#2 n-Decane (C10)

R.T.: 4.334 min
Delta R.T.: -0.005 min
Response: 2782110
Conc: 20.42 ug/ml



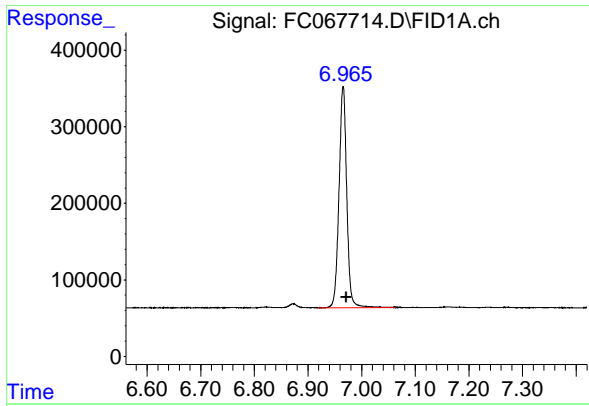
#3 A~Naphthalene (C11.7)

R.T.: 5.911 min
Delta R.T.: -0.006 min
Response: 3034496
Conc: 20.48 ug/ml



#4 n-Dodecane (C12)

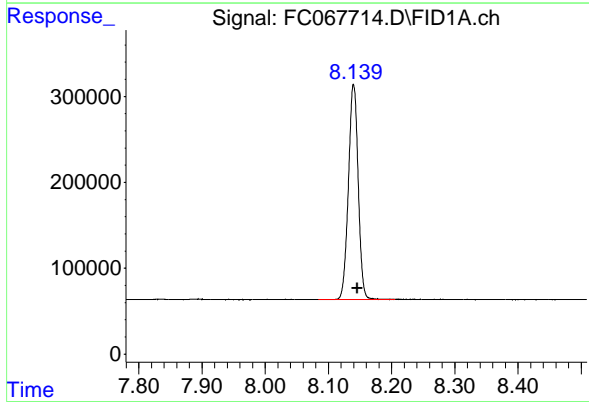
R.T.: 6.348 min
Delta R.T.: -0.005 min
Response: 2765689
Conc: 20.42 ug/ml



#5 A~2-methylnaphthalene (C12.89)

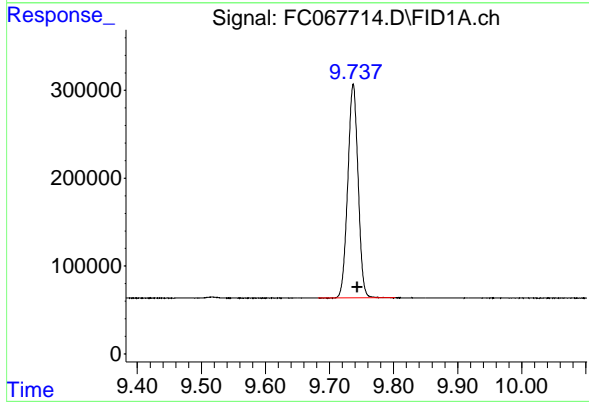
R.T.: 6.965 min
 Delta R.T.: -0.006 min
 Response: 2892454
 Conc: 20.48 ug/ml

Instrument :
 FID_D
 ClientSampleId :



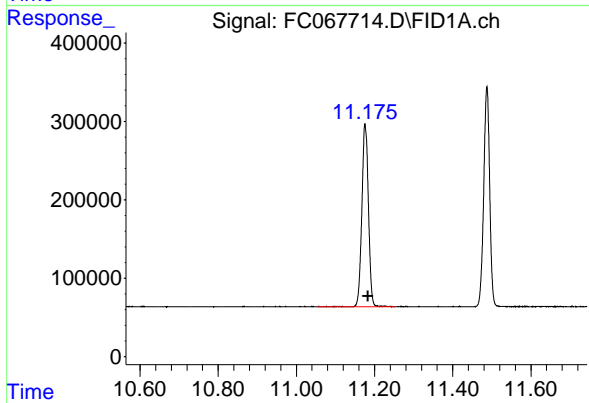
#6 n-Tetradecane (C14)

R.T.: 8.140 min
 Delta R.T.: -0.006 min
 Response: 2686124
 Conc: 20.46 ug/ml



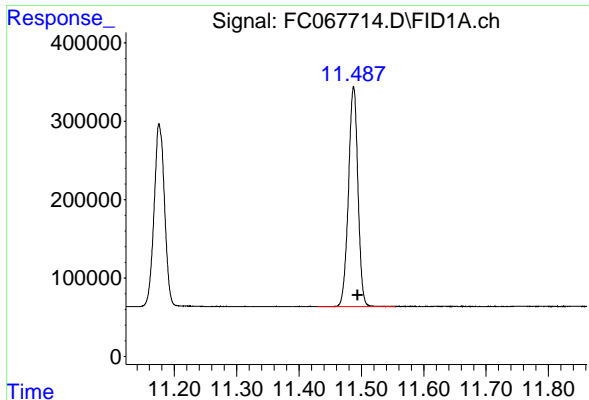
#7 n-Hexadecane (C16)

R.T.: 9.737 min
 Delta R.T.: -0.007 min
 Response: 2712926
 Conc: 20.54 ug/ml



#8 n-Octadecane (C18)

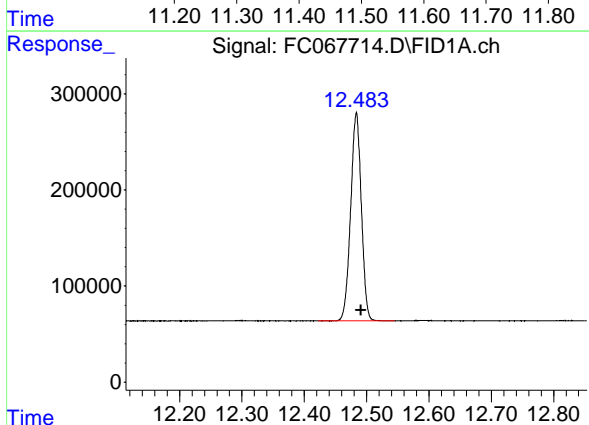
R.T.: 11.176 min
 Delta R.T.: -0.008 min
 Response: 2716429
 Conc: 20.56 ug/ml



#9 ortho-Terphenyl (SURR)

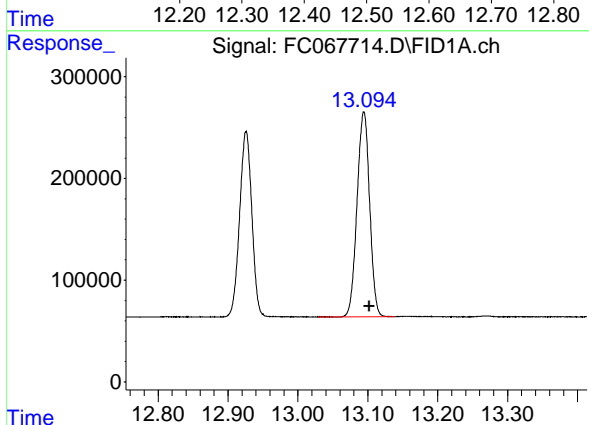
R.T.: 11.487 min
 Delta R.T.: -0.007 min
 Response: 2960777
 Conc: 20.18 ug/ml

Instrument :
 FID_D
 ClientSampleId :



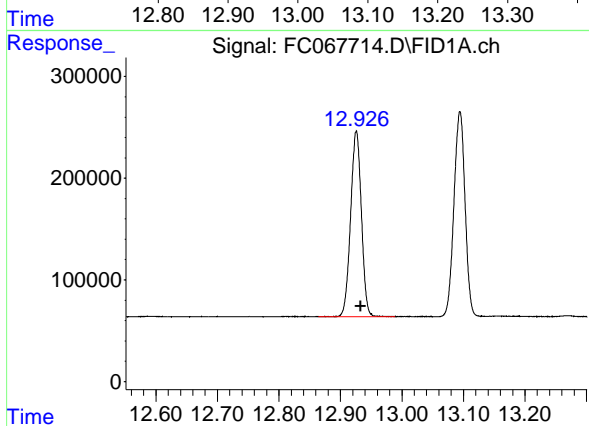
#10 n-Eicosane (C20)

R.T.: 12.484 min
 Delta R.T.: -0.007 min
 Response: 2577432
 Conc: 20.43 ug/ml



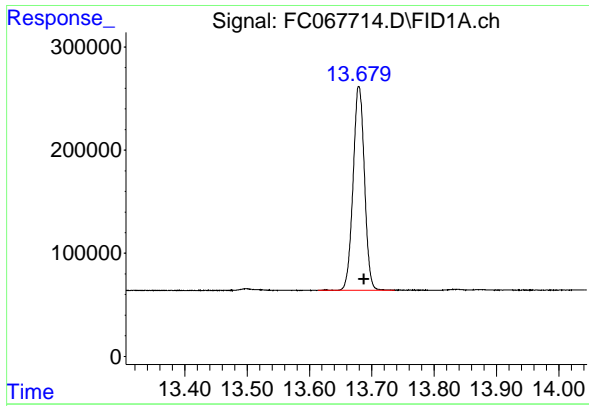
#11 n-Heneicosane (C21)

R.T.: 13.094 min
 Delta R.T.: -0.008 min
 Response: 2519043
 Conc: 20.41 ug/ml



#12 1-chlorooctadecane (SURR)

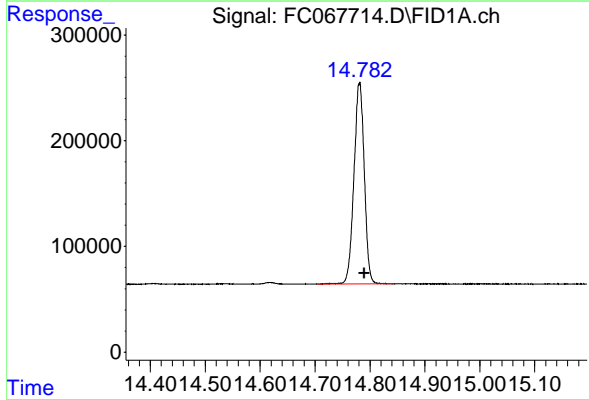
R.T.: 12.926 min
 Delta R.T.: -0.007 min
 Response: 2219724
 Conc: 20.56 ug/ml



#13 n-Docosane (C22)

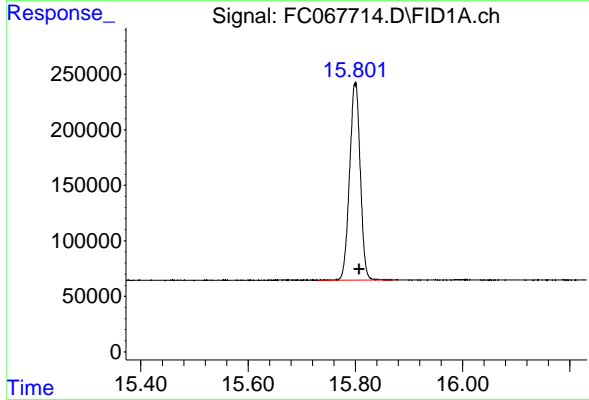
R.T.: 13.679 min
Delta R.T.: -0.008 min
Response: 2504815
Conc: 20.46 ug/ml

Instrument :
FID_D
ClientSampleId :



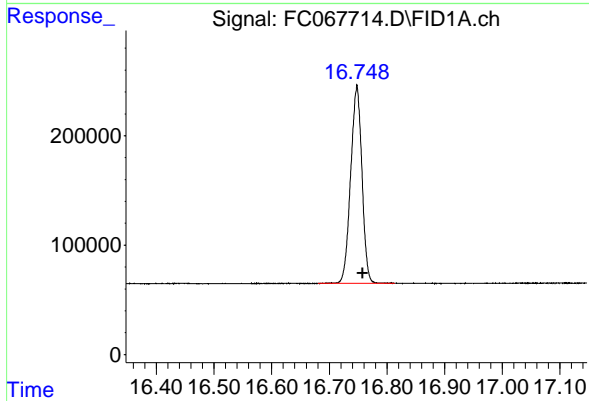
#14 n-Tetracosane (C24)

R.T.: 14.781 min
Delta R.T.: -0.008 min
Response: 2497063
Conc: 20.60 ug/ml



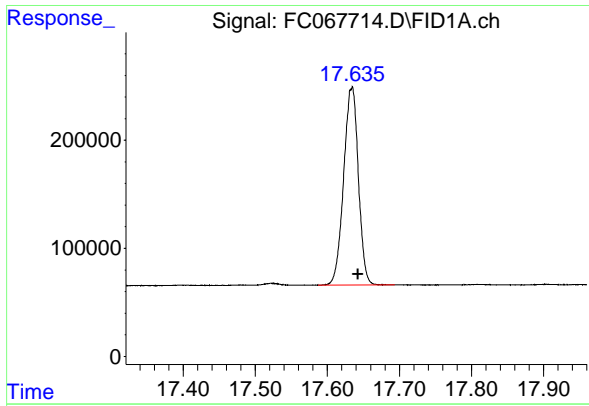
#15 n-Hexacosane (C26)

R.T.: 15.800 min
Delta R.T.: -0.008 min
Response: 2452721
Conc: 20.60 ug/ml



#16 n-Octacosane (C28)

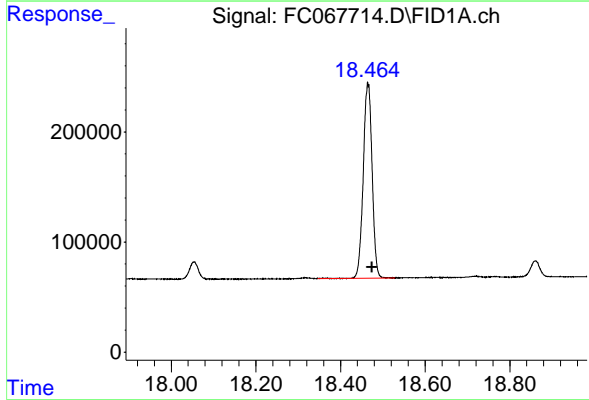
R.T.: 16.748 min
Delta R.T.: -0.010 min
Response: 2457295
Conc: 20.89 ug/ml



#17 n-Tricontane (C30)

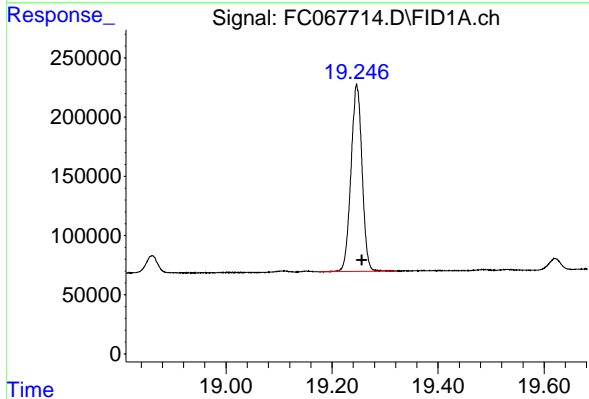
R.T.: 17.634 min
Delta R.T.: -0.009 min
Response: 2597955
Conc: 21.49 ug/ml

Instrument :
FID_D
ClientSampleId :



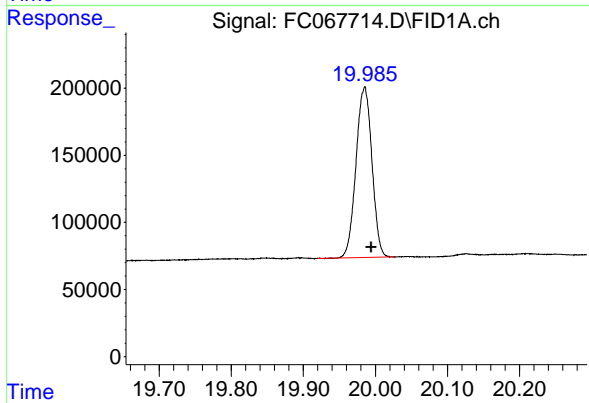
#18 n-Dotriacontane (C32)

R.T.: 18.465 min
Delta R.T.: -0.009 min
Response: 2572408
Conc: 21.74 ug/ml



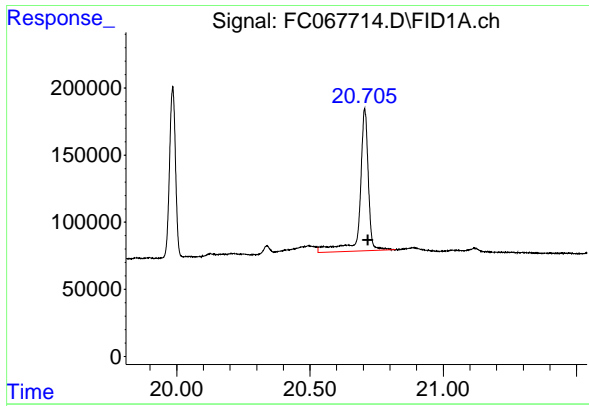
#19 n-Tetracontane (C34)

R.T.: 19.247 min
Delta R.T.: -0.009 min
Response: 2286642
Conc: 21.83 ug/ml



#20 n-Hexatriacontane (C36)

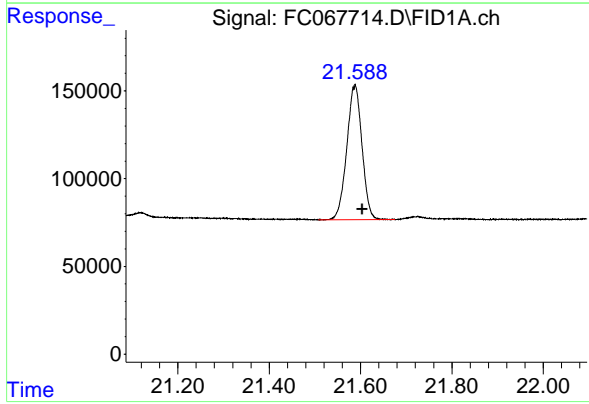
R.T.: 19.985 min
Delta R.T.: -0.009 min
Response: 1952987
Conc: 21.46 ug/ml



#21 n-Octatriacontane (C38)

R.T.: 20.705 min
Delta R.T.: -0.013 min
Response: 2343541
Conc: 27.06 ug/ml

Instrument :
FID_D
ClientSampleId :



#22 n-Tetracontane (C40)

R.T.: 21.588 min
Delta R.T.: -0.016 min
Response: 1770087
Conc: 20.82 ug/ml