

Data Path : Z:\pestpcbsrv\HPCHEM1\FID_E\Data\FE111224AL\
 Data File : FE051182.D
 Signal(s) : FID1B.ch
 Acq On : 12 Nov 2024 23:47
 Operator : YP\AJ
 Sample : P4816-02
 Misc :
 ALS Vial : 16 Sample Multiplier: 1

Instrument :
 FID_D
 ClientSampleId :

Integration File: autoint1.e
 Quant Time: Nov 13 02:51:32 2024
 Quant Method : Z:\pestpcbsrv\HPCHEM1\FID_E\methods\Aliphatic EPH 110724.M
 Quant Title : GC Extractables
 QLast Update : Thu Nov 07 04:56:04 2024
 Response via : Initial Calibration
 Integrator: ChemStation

Volume Inj. : 1 ul
 Signal Phase : Rxi-1ms
 Signal Info : 20M x 0.18mm x 0.18um

Compound	R.T.	Response	Conc Units

System Monitoring Compounds			
9) S ortho-Terphenyl (SURR)	11.858	6062697	40.392 ug/ml
Spiked Amount	50.000	Recovery	= 80.78%
12) S 1-chlorooctadecane (S...	13.290	4278864	37.689 ug/ml
Spiked Amount	50.000	Recovery	= 75.38%
Target Compounds			
11) T n-Heneicosane (C21)	13.500f	690415	5.166 ug/ml
20) T n-Hexatriacontane (C36)	20.382	1174130	9.840 ug/ml
21) T n-Octatriacontane (C38)	21.093	2166356	19.034 ug/ml

(f)=RT Delta > 1/2 Window

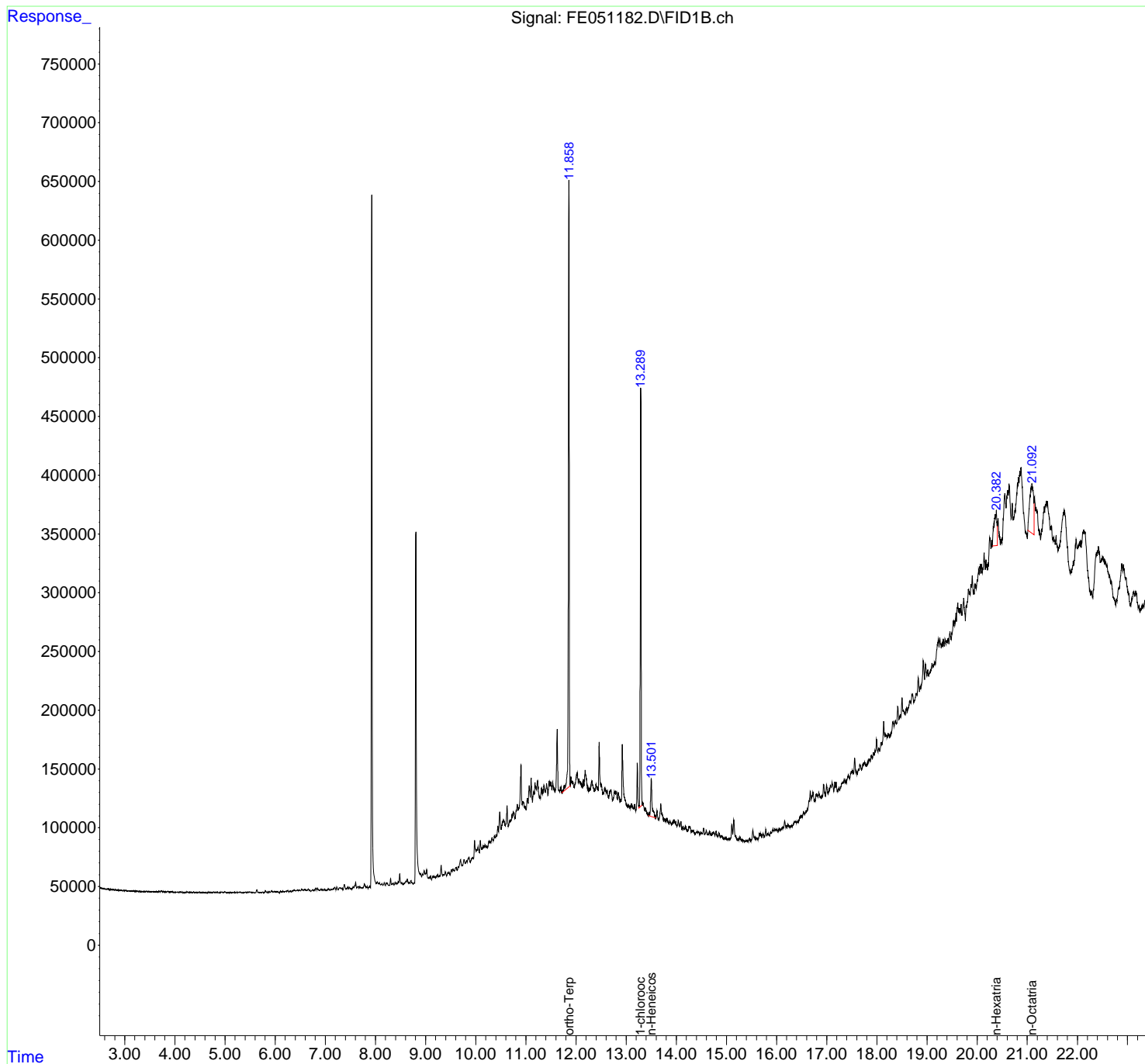
(m)=manual int.

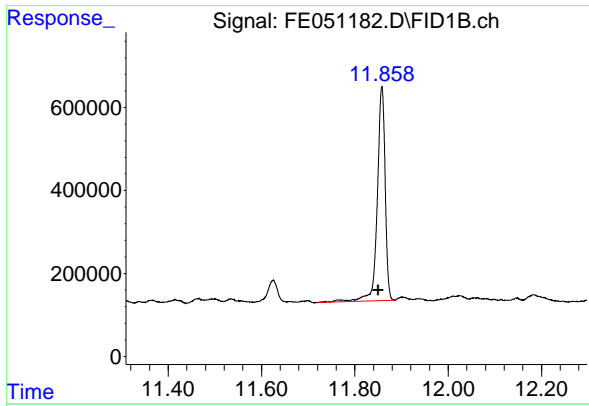
Data Path : Z:\pestpcbsrv\HPCHEM1\FID_E\Data\FE11224AL\
 Data File : FE051182.D
 Signal(s) : FID1B.ch
 Acq On : 12 Nov 2024 23:47
 Operator : YP\AJ
 Sample : P4816-02
 Misc :
 ALS Vial : 16 Sample Multiplier: 1

Instrument :
 FID_D
 ClientSampleId :

Integration File: autoint1.e
 Quant Time: Nov 13 02:51:32 2024
 Quant Method : Z:\pestpcbsrv\HPCHEM1\FID_E\methods\Aliphatic EPH 110724.M
 Quant Title : GC Extractables
 QLast Update : Thu Nov 07 04:56:04 2024
 Response via : Initial Calibration
 Integrator: ChemStation

Volume Inj. : 1 ul
 Signal Phase : Rxi-1ms
 Signal Info : 20M x 0.18mm x 0.18um

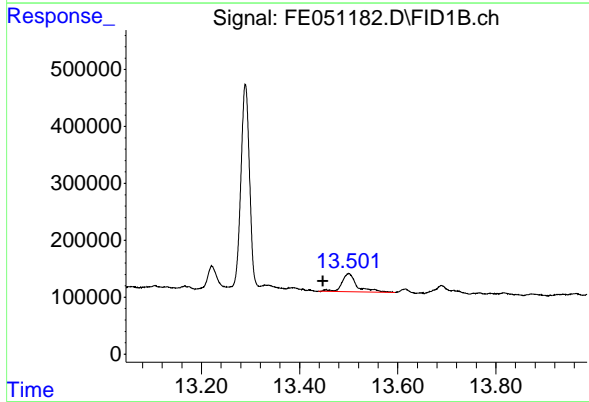




#9 ortho-Terphenyl (SURR)

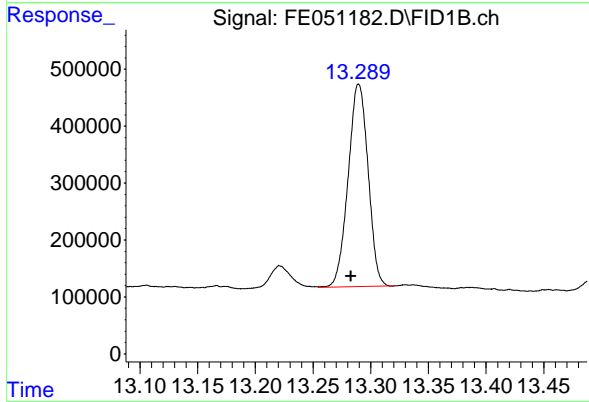
R.T.: 11.858 min
 Delta R.T.: 0.007 min
 Response: 6062697
 Conc: 40.39 ug/ml

Instrument : FID_D
 ClientSampleId :



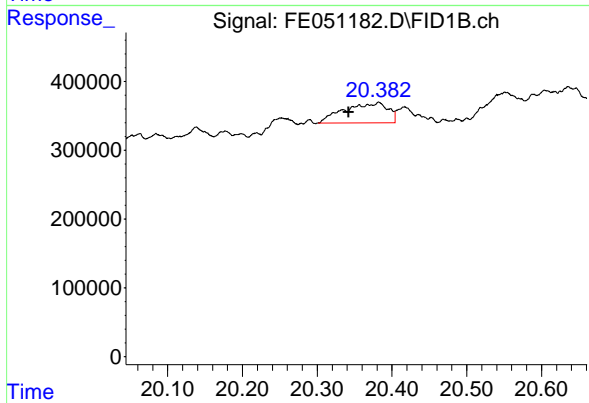
#11 n-Heneicosane (C21)

R.T.: 13.500 min
 Delta R.T.: 0.052 min
 Response: 690415
 Conc: 5.17 ug/ml



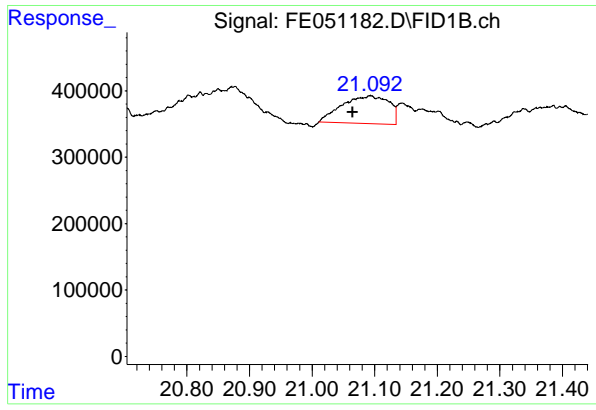
#12 1-chlorooctadecane (SURR)

R.T.: 13.290 min
 Delta R.T.: 0.007 min
 Response: 4278864
 Conc: 37.69 ug/ml



#20 n-Hexatriacontane (C36)

R.T.: 20.382 min
 Delta R.T.: 0.041 min
 Response: 1174130
 Conc: 9.84 ug/ml



#21 n-Octatriacontane (C38)

R.T.: 21.093 min
Delta R.T.: 0.028 min
Response: 2166356
Conc: 19.03 ug/ml

Instrument :
FID_D
ClientSampleId :