

Data Path : Z:\pestpcbsrv\HPCHEM1\FID_F\Data\FF111124AR\
 Data File : FF014997.D
 Signal(s) : FID2B.ch
 Acq On : 11 Nov 2024 13:40
 Operator : YP\AJ
 Sample : I.BLK
 Misc :
 ALS Vial : 51 Sample Multiplier: 1

Instrument :
 FID_D
 ClientSampleId :

Integration File: autoint1.e
 Quant Time: Nov 11 20:48:53 2024
 Quant Method : Z:\pestpcbsrv\HPCHEM1\FID_F\Method\Aromatic EPH 110724.M
 Quant Title : GC Extractables
 QLast Update : Fri Nov 08 08:49:17 2024
 Response via : Initial Calibration
 Integrator: ChemStation

Volume Inj. : 1 µl
 Signal Phase : Rxi-1ms
 Signal Info : 20M x 0.18mm x 0.18µm

Compound	R.T.	Response	Conc Units

System Monitoring Compounds			
Target Compounds			
19) T Indeno[1,2,3-cd]pyren...	18.504	39008	0.284 ug/ml
20) T Dibenz[a,h]anthracene...	18.504	39008	0.264 ug/ml

(f)=RT Delta > 1/2 Window

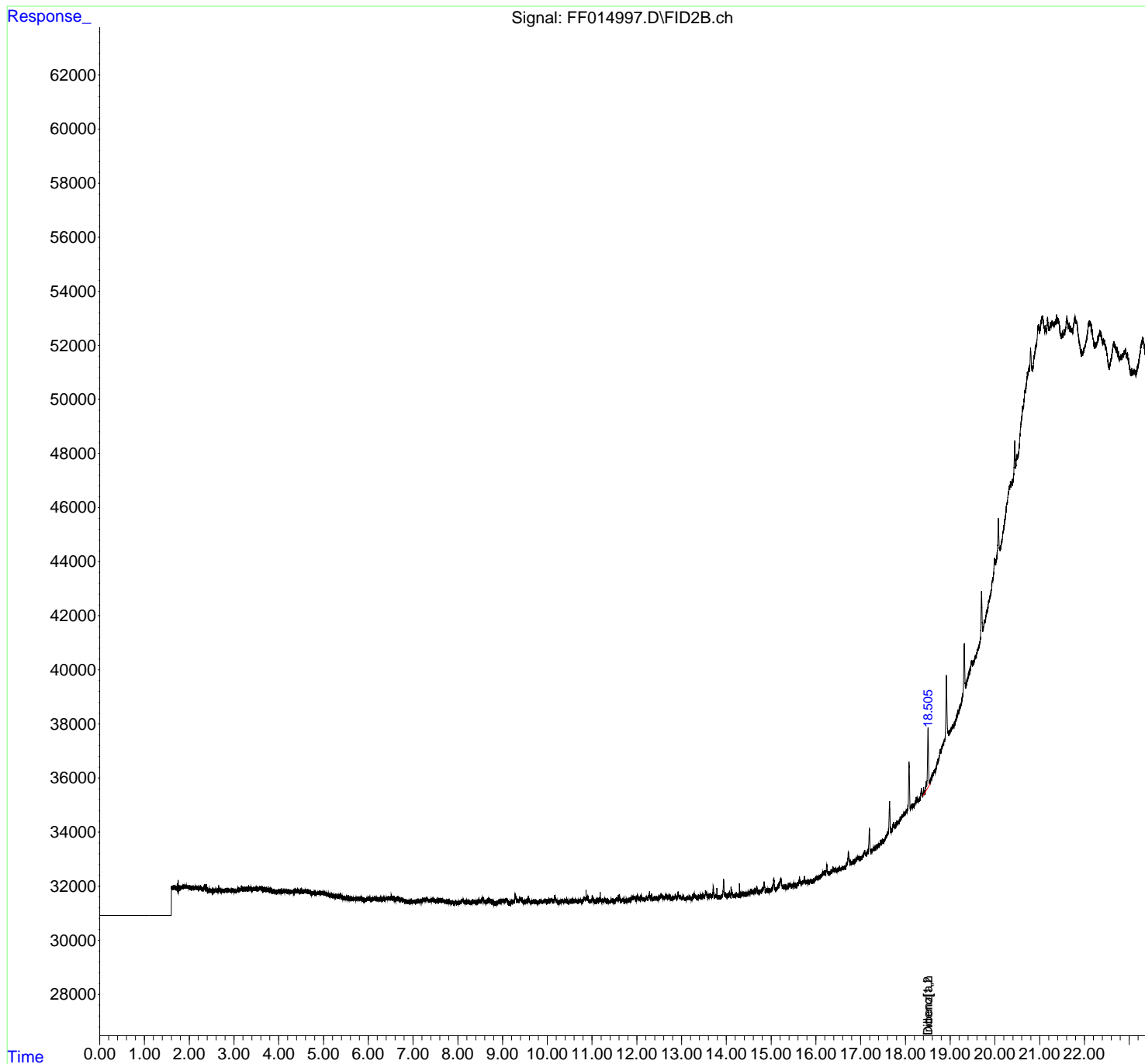
(m)=manual int.

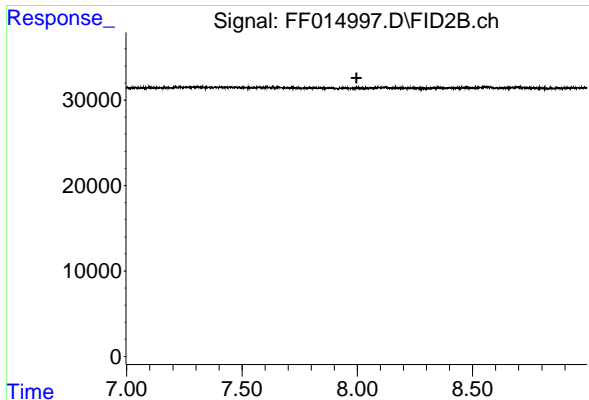
Data Path : Z:\pestpcbsrv\HPCHEM1\FID_F\Data\FF111124R\
 Data File : FF014997.D
 Signal(s) : FID2B.ch
 Acq On : 11 Nov 2024 13:40
 Operator : YP\AJ
 Sample : I.BLK
 Misc :
 ALS Vial : 51 Sample Multiplier: 1

Instrument :
 FID_D
 ClientSampleId :

Integration File: autoint1.e
 Quant Time: Nov 11 20:48:53 2024
 Quant Method : Z:\pestpcbsrv\HPCHEM1\FID_F\Method\Aromatic EPH 110724.M
 Quant Title : GC Extractables
 QLast Update : Fri Nov 08 08:49:17 2024
 Response via : Initial Calibration
 Integrator: ChemStation

Volume Inj. : 1 µl
 Signal Phase : Rxi-1ms
 Signal Info : 20M x 0.18mm x 0.18µm

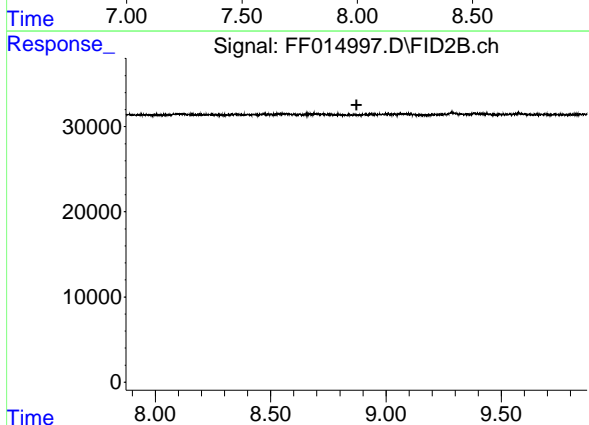




#4 2-Bromonaphthalene (SURRE)

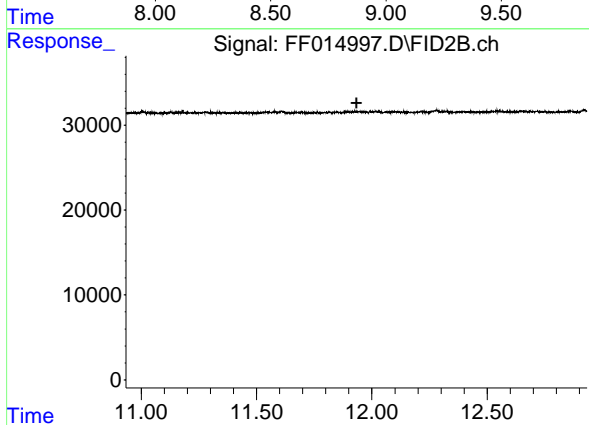
R.T.: 0.000 min
 Exp R.T.: 7.997 min
 Response: 0
 Conc: N.D.

Instrument : FID_D
 ClientSampleId :



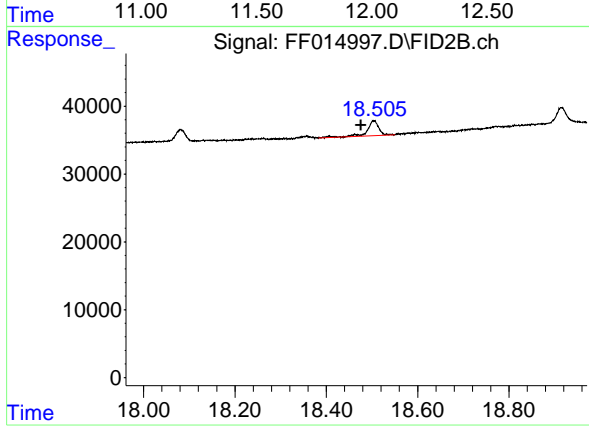
#6 2-Fluorobiphenyl (SURRE)

R.T.: 0.000 min
 Exp R.T.: 8.872 min
 Response: 0
 Conc: N.D.



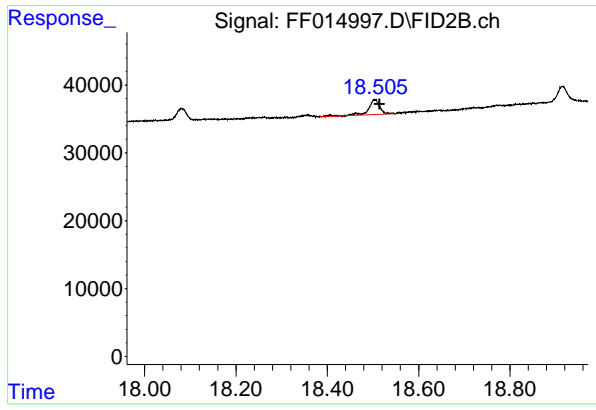
#11 ortho-Terphenyl (SURRE)

R.T.: 0.000 min
 Exp R.T.: 11.933 min
 Response: 0
 Conc: N.D.



#19 Indeno[1,2,3-cd]pyrene (C35.01)

R.T.: 18.504 min
 Delta R.T.: 0.028 min
 Response: 39008
 Conc: 0.28 ug/ml



#20 Dibenz[a,h]anthracene (C30.36)

R.T.: 18.504 min
Delta R.T.: -0.010 min
Response: 39008
Conc: 0.26 ug/ml

Instrument : FID_D
ClientSampleId :