

Data Path : Z:\pestpcbsrv\HPCHEM1\FID_D\Data\FD111721AL\
 Data File : FD039468.D
 Signal(s) : FID2B.CH
 Acq On : 17 Nov 2021 20:34
 Operator : AJ\MA
 Sample : M4707-28
 Misc :
 ALS Vial : 62 Sample Multiplier: 1

Integration File: sample.E
 Quant Time: Nov 18 01:02:13 2021
 Quant Method : Z:\pestpcbsrv\HPCHEM1\FID_D\methods\Aliphatic EPH 102621.M
 Quant Title : GC Extractables
 QLast Update : Wed Oct 27 04:49:08 2021
 Response via : Initial Calibration
 Integrator: ChemStation 6890 Scale Mode: Large solvent peaks clipped

Volume Inj. : 1 ul
 Signal Phase : Rxi-1ms
 Signal Info : 20M x 0.18mm x 0.18um

Compound	R.T.	Response	Conc Units

System Monitoring Compounds			
9) S ortho-Terphenyl (SURR)	11.666	4518563	35.415 ug/ml
Spiked Amount	50.000	Recovery	= 70.83%
12) S 1-chlorooctadecane (S...	13.084	5362968	51.604 ug/mlm
Spiked Amount	50.000	Recovery	= 103.21%

Target Compounds

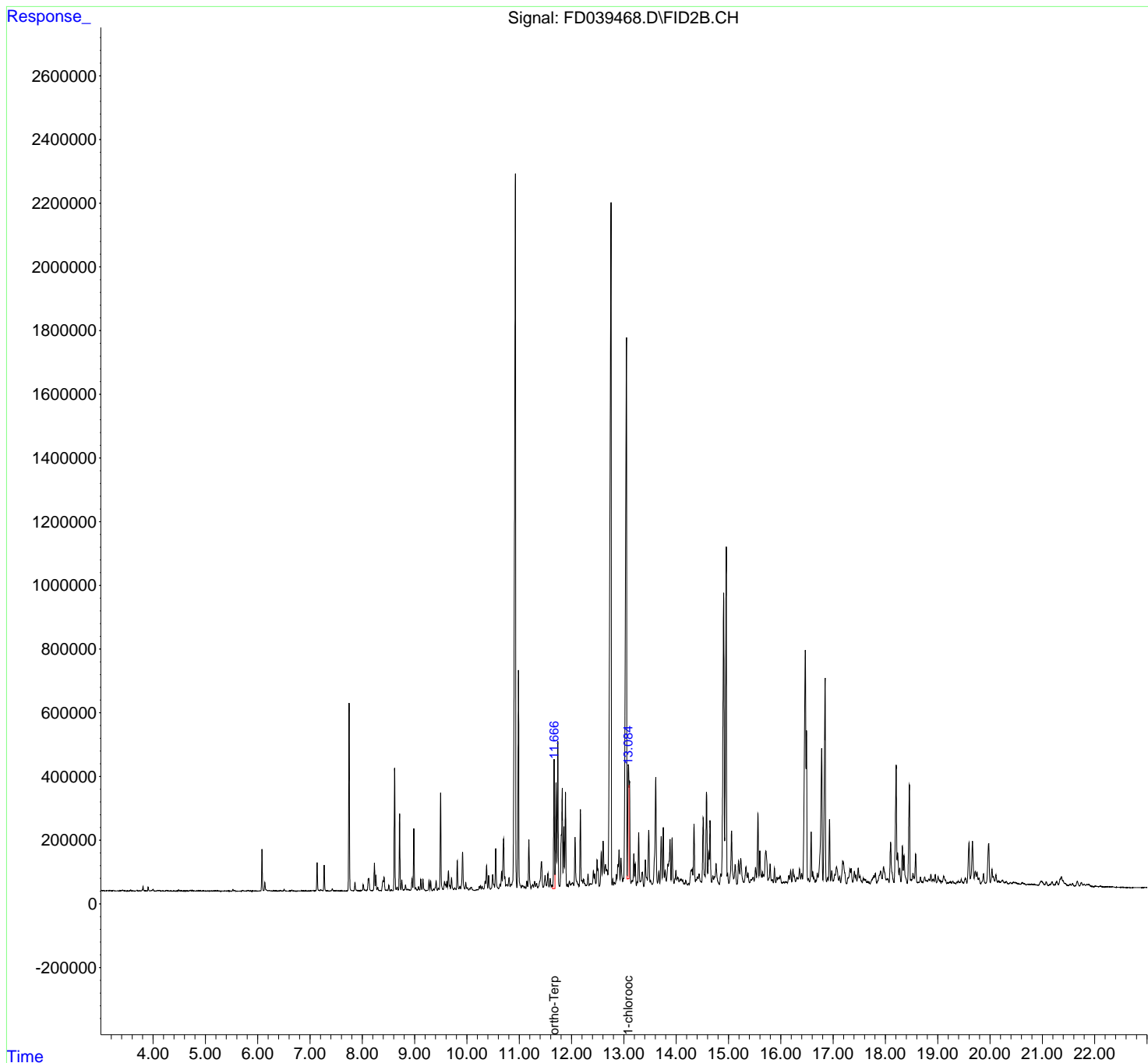
(f)=RT Delta > 1/2 Window

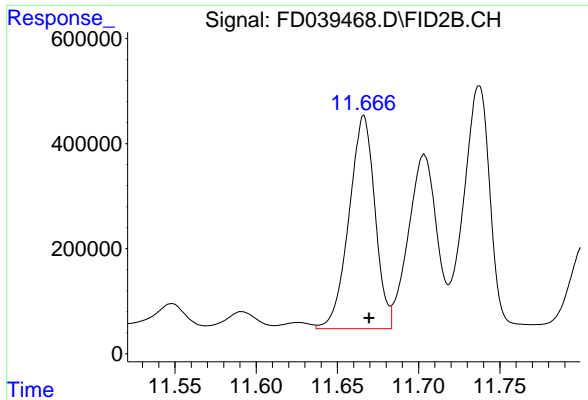
(m)=manual int.

Data Path : Z:\pestpcbsrv\HPCHEM1\FID_D\Data\FD111721AL\
 Data File : FD039468.D
 Signal(s) : FID2B.CH
 Acq On : 17 Nov 2021 20:34
 Operator : AJ\MA
 Sample : M4707-28
 Misc :
 ALS Vial : 62 Sample Multiplier: 1

Integration File: sample.E
 Quant Time: Nov 18 01:02:13 2021
 Quant Method : Z:\pestpcbsrv\HPCHEM1\FID_D\methods\Aliphatic EPH 102621.M
 Quant Title : GC Extractables
 QLast Update : Wed Oct 27 04:49:08 2021
 Response via : Initial Calibration
 Integrator: ChemStation 6890 Scale Mode: Large solvent peaks clipped

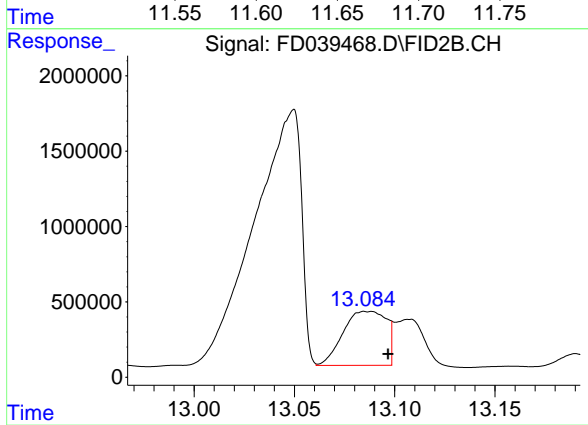
Volume Inj. : 1 ul
 Signal Phase : Rxi-1ms
 Signal Info : 20M x 0.18mm x 0.18um





#9 ortho-Terphenyl (SURR)

R.T.: 11.666 min
Delta R.T.: -0.003 min
Response: 4518563
Conc: 35.41 ug/ml



#12 1-chlorooctadecane (SURR)

R.T.: 13.084 min
Delta R.T.: -0.012 min
Response: 5362968
Conc: 51.60 ug/ml m