

Data Path : Z:\pestpcbsrv\HPCHEM1\FID_D\Data\FD111819AL\
 Data File : FD031546.D
 Signal(s) : FID2B.CH
 Acq On : 18 Nov 2019 12:14
 Operator : DD\AJ
 Sample : K5676-18
 Misc :
 ALS Vial : 57 Sample Multiplier: 1

Integration File: autoint1.e
 Quant Time: Nov 18 14:13:00 2019
 Quant Method : Z:\pestpcbsrv\HPCHEM1\FID_D\methods\Alaphatic EPH 110519.M
 Quant Title : GC Extractables
 QLast Update : Wed Nov 06 06:45:13 2019
 Response via : Initial Calibration
 Integrator: ChemStation 6890 Scale Mode: Large solvent peaks clipped

Volume Inj. : 1 ul
 Signal Phase : Rxi-1ms
 Signal Info : 20M x 0.18mm x 0.18um

Compound	R.T.	Response	Conc Units
System Monitoring Compounds			
9) S ortho-Terphenyl (SURR)	11.557	4371583	28.730 ug/ml
Spiked Amount	50.000	Recovery =	57.46%
12) S 1-chlorooctadecane (S...	12.985	7773427	68.407 ug/mlm
Spiked Amount	50.000	Recovery =	136.81%

Target Compounds

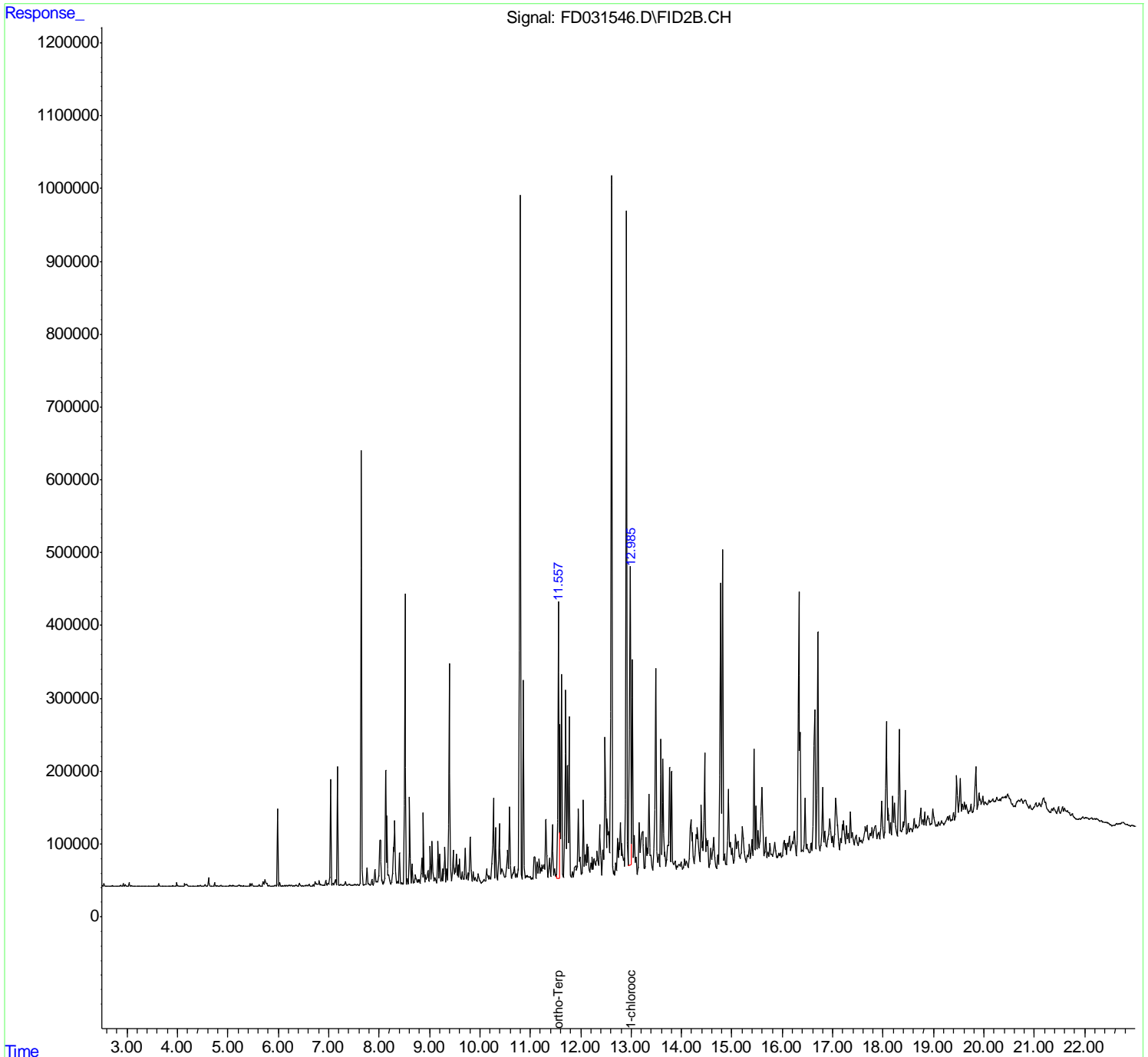
(f)=RT Delta > 1/2 Window

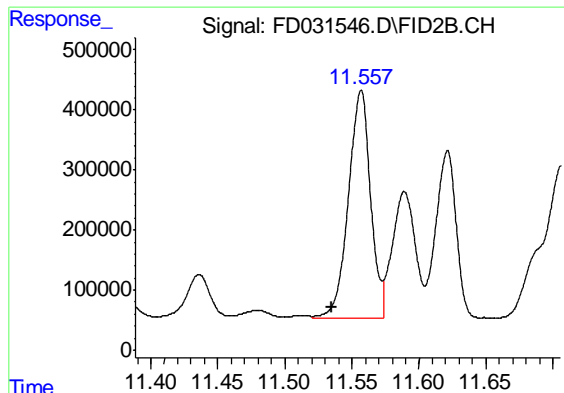
(m)=manual int.

Data Path : Z:\pestpcbsrv\HPCHEM1\FID_D\Data\FD111819AL\
Data File : FD031546.D
Signal(s) : FID2B.CH
Acq On : 18 Nov 2019 12:14
Operator : DD\AJ
Sample : K5676-18
Misc :
ALS Vial : 57 Sample Multiplier: 1

Integration File: autoint1.e
Quant Time: Nov 18 14:13:00 2019
Quant Method : Z:\pestpcbsrv\HPCHEM1\FID_D\methods\Alaphatic EPH 110519.M
Quant Title : GC Extractables
QLast Update : Wed Nov 06 06:45:13 2019
Response via : Initial Calibration
Integrator: ChemStation 6890 Scale Mode: Large solvent peaks clipped

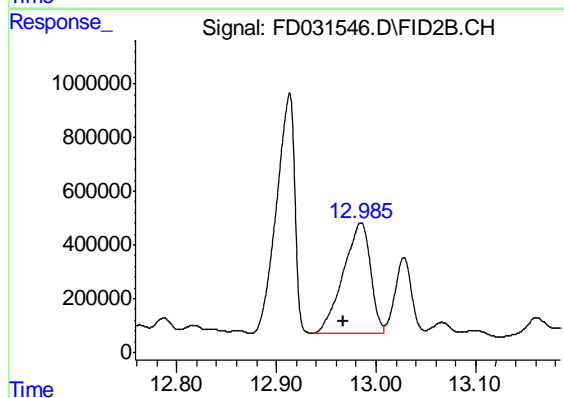
Volume Inj. : 1 ul
Signal Phase : Rxi-1ms
Signal Info : 20M x 0.18mm x 0.18um





#9 ortho-Terphenyl (SURR)

R.T.: 11.557 min
Delta R.T.: 0.022 min
Response: 4371583
Conc: 28.73 ug/ml



#12 1-chlorooctadecane (SURR)

R.T.: 12.985 min
Delta R.T.: 0.018 min
Response: 7773427
Conc: 68.41 ug/ml m