

Data Path : Z:\pestpcbsrv\HPCHEM1\FID_D\Data\FD111921AL\
 Data File : FD039562.D
 Signal(s) : FID2B.CH
 Acq On : 20 Nov 2021 10:47
 Operator : AJ\MA
 Sample : M4758-10
 Misc :
 ALS Vial : 85 Sample Multiplier: 1

Instrument :
 FID_D
 ClientSampleId :

Integration File: autoint1.e
 Quant Time: Nov 21 23:59:23 2021
 Quant Method : Z:\pestpcbsrv\HPCHEM1\FID_D\methods\Aliphatic EPH 102621.M
 Quant Title : GC Extractables
 QLast Update : Wed Oct 27 04:49:08 2021
 Response via : Initial Calibration
 Integrator: ChemStation 6890 Scale Mode: Large solvent peaks clipped

Volume Inj. : 1 ul
 Signal Phase : Rxi-1ms
 Signal Info : 20M x 0.18mm x 0.18um

Compound	R.T.	Response	Conc Units

System Monitoring Compounds			
9) S ortho-Terphenyl (SURR)	11.658	3809120	29.855 ug/ml
Spiked Amount	50.000	Recovery	= 59.71%
12) S 1-chlorooctadecane (S...	13.085	3109889	29.924 ug/ml
Spiked Amount	50.000	Recovery	= 59.85%
Target Compounds			
3) T A~Naphthalene (C11.7)	6.133	479833	3.723 ug/ml
16) T n-Octacosane (C28)	16.946	521418	4.479 ug/ml

(f)=RT Delta > 1/2 Window

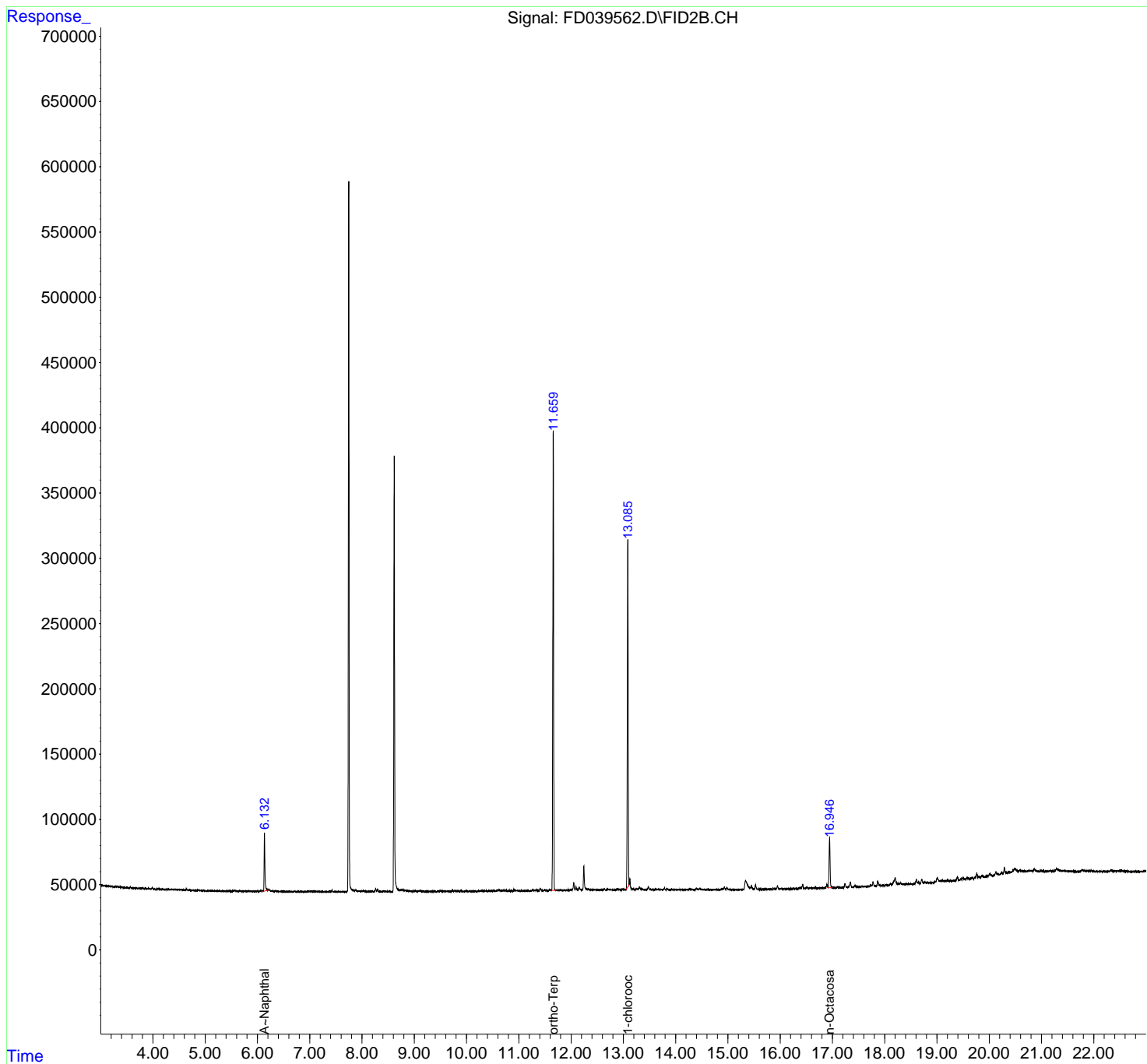
(m)=manual int.

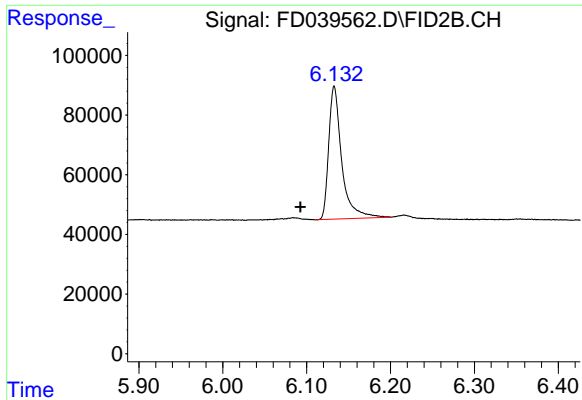
Data Path : Z:\pestpcbsrv\HPCHEM1\FID_D\Data\FD111921AL\
 Data File : FD039562.D
 Signal(s) : FID2B.CH
 Acq On : 20 Nov 2021 10:47
 Operator : AJ\MA
 Sample : M4758-10
 Misc :
 ALS Vial : 85 Sample Multiplier: 1

Instrument :
 FID_D
 ClientSampleId :

Integration File: autoint1.e
 Quant Time: Nov 21 23:59:23 2021
 Quant Method : Z:\pestpcbsrv\HPCHEM1\FID_D\methods\Aliphatic EPH 102621.M
 Quant Title : GC Extractables
 QLast Update : Wed Oct 27 04:49:08 2021
 Response via : Initial Calibration
 Integrator: ChemStation 6890 Scale Mode: Large solvent peaks clipped

Volume Inj. : 1 ul
 Signal Phase : Rxi-1ms
 Signal Info : 20M x 0.18mm x 0.18um

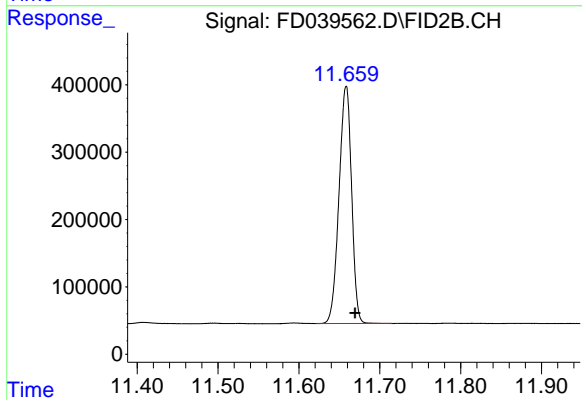




#3 A~Naphthalene (C11.7)

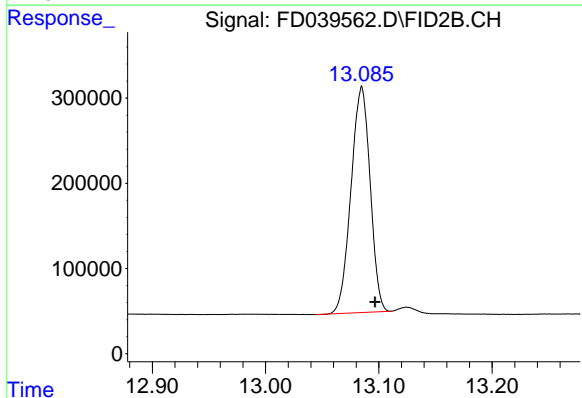
R.T.: 6.133 min
Delta R.T.: 0.041 min
Response: 479833
Conc: 3.72 ug/ml

Instrument :
FID_D
ClientSampleId :



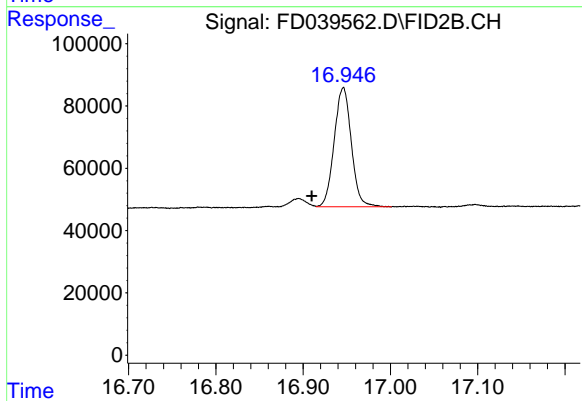
#9 ortho-Terphenyl (SURR)

R.T.: 11.658 min
Delta R.T.: -0.011 min
Response: 3809120
Conc: 29.85 ug/ml



#12 1-chlorooctadecane (SURR)

R.T.: 13.085 min
Delta R.T.: -0.012 min
Response: 3109889
Conc: 29.92 ug/ml



#16 n-Octacosane (C28)

R.T.: 16.946 min
Delta R.T.: 0.036 min
Response: 521418
Conc: 4.48 ug/ml