

Data Path : Z:\pestpcbsrv\HPCHEM1\FID_D\Data\FD112020AL\
 Data File : FD035592.D
 Signal(s) : FID2B.CH
 Acq On : 20 Nov 2020 21:33
 Operator : DD\AJ
 Sample : L4809-01
 Misc :
 ALS Vial : 63 Sample Multiplier: 1

Integration File: autoint1.e
 Quant Time: Nov 20 23:08:08 2020
 Quant Method : Z:\pestpcbsrv\HPCHEM1\FID_D\methods\Alaphatic EPH 110220.M
 Quant Title : GC Extractables
 QLast Update : Tue Nov 03 11:48:08 2020
 Response via : Initial Calibration
 Integrator: ChemStation 6890 Scale Mode: Large solvent peaks clipped

Volume Inj. : 1 ul
 Signal Phase : Rxi-1ms
 Signal Info : 20M x 0.18mm x 0.18um

Compound	R.T.	Response	Conc Units

System Monitoring Compounds			
9) S ortho-Terphenyl (SURR)	11.524	4293933	33.009 ug/ml
Spiked Amount	50.000	Recovery	= 66.02%
12) S 1-chlorooctadecane (S...	12.956	3411206	32.731 ug/ml
Spiked Amount	50.000	Recovery	= 65.46%

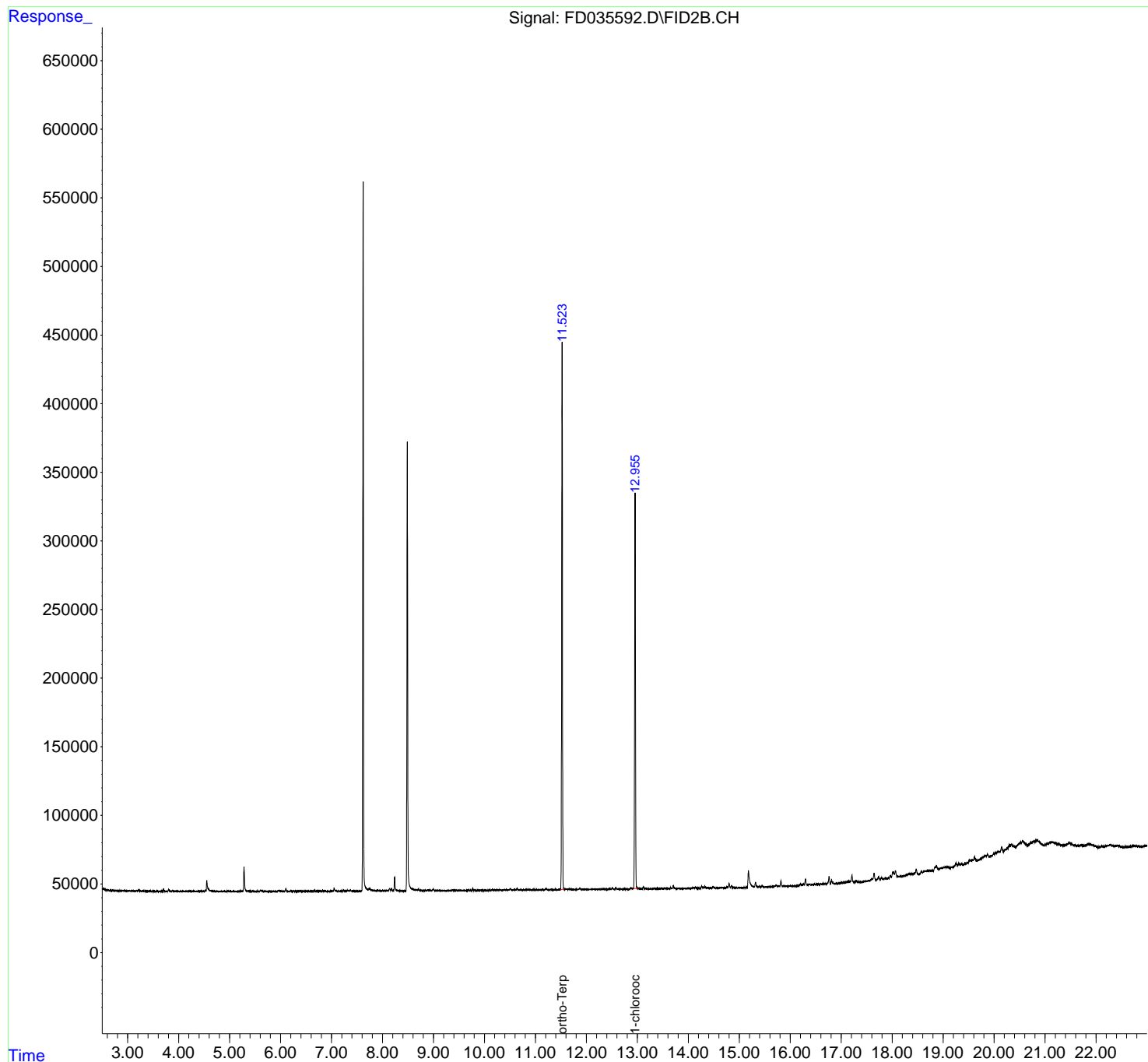
Target Compounds

(f)=RT Delta > 1/2 Window (m)=manual int.

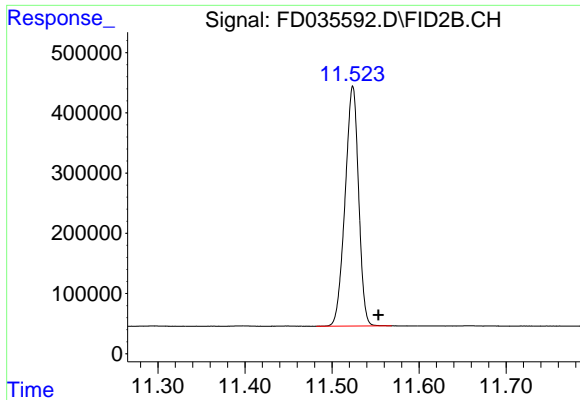
Data Path : Z:\pestpcbsrv\HPCHEM1\FID_D\Data\FD112020AL\
Data File : FD035592.D
Signal(s) : FID2B.CH
Acq On : 20 Nov 2020 21:33
Operator : DD\AJ
Sample : L4809-01
Misc :
ALS Vial : 63 Sample Multiplier: 1

Integration File: autoint1.e
Quant Time: Nov 20 23:08:08 2020
Quant Method : Z:\pestpcbsrv\HPCHEM1\FID_D\methods\Alaphatic EPH 110220.M
Quant Title : GC Extractables
QLast Update : Tue Nov 03 11:48:08 2020
Response via : Initial Calibration
Integrator: ChemStation 6890 Scale Mode: Large solvent peaks clipped

Volume Inj. : 1 ul
Signal Phase : Rxi-1ms
Signal Info : 20M x 0.18mm x 0.18um

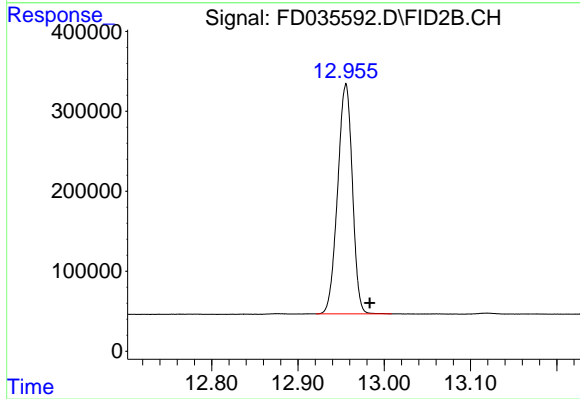


ortho-Terp
1-chlorooc



#9 ortho-Terphenyl (SURR)

R.T.: 11.524 min
Delta R.T.: -0.029 min
Response: 4293933
Conc: 33.01 ug/ml



#12 1-chlorooctadecane (SURR)

R.T.: 12.956 min
Delta R.T.: -0.027 min
Response: 3411206
Conc: 32.73 ug/ml