

Data Path : Z:\pestpcbsrv\HPCHEM1\FID_D\Data\FD112219AL\
 Data File : FD031637.D
 Signal(s) : FID2B.CH
 Acq On : 22 Nov 2019 14:52
 Operator : DD\AJ
 Sample : 20 PPM ALIPHATIC HC STD
 Misc :
 ALS Vial : 52 Sample Multiplier: 1

Integration File: autoint1.e
 Quant Time: Nov 22 21:58:11 2019
 Quant Method : Z:\pestpcbsrv\HPCHEM1\FID_D\methods\Alaphatic EPH 110519.M
 Quant Title : GC Extractables
 QLast Update : Wed Nov 06 06:45:13 2019
 Response via : Initial Calibration
 Integrator: ChemStation 6890 Scale Mode: Large solvent peaks clipped

Volume Inj. : 1 ul
 Signal Phase : Rxi-1ms
 Signal Info : 20M x 0.18mm x 0.18um

Compound	R.T.	Response	Conc Units

System Monitoring Compounds			
9) S ortho-Terphenyl (SURR)	11.551	2449571	16.098 ug/ml
Spiked Amount	50.000	Recovery	= 32.20%
12) S 1-chlorooctadecane (S...	12.981	1845117	16.237 ug/ml
Spiked Amount	50.000	Recovery	= 32.47%
Target Compounds			
1) T n-Nonane (C9)	3.338	2462582	18.564 ug/ml
2) T n-Decane (C10)	4.408	2461841	18.458 ug/ml
3) T A~Naphthalene (C11.7)	5.990	2697026	18.007 ug/ml
4) T n-Dodecane (C12)	6.420	2463540	18.293 ug/ml
5) T A~2-methylnaphthalene...	7.042	2662794	17.568 ug/ml
6) T n-Tetradecane (C14)	8.207	2352090	17.456 ug/ml
7) T n-Hexadecane (C16)	9.800	2325890	17.347 ug/ml
8) T n-Octadecane (C18)	11.236	2241169	16.803 ug/ml
10) T n-Eicosane (C20)	12.539	2147282	16.279 ug/ml
11) T n-Heneicosane (C21)	13.147	2131092	16.105 ug/ml
13) T n-Docosane (C22)	13.730	2088617	15.906 ug/ml
14) T n-Tetracosane (C24)	14.828	2090944	15.979 ug/ml
15) T n-Hexacosane (C26)	15.843	2025682	15.680 ug/ml
16) T n-Octacosane (C28)	16.787	1983226	15.498 ug/ml
17) T n-Tricontane (C30)	17.669	1993988	15.632 ug/ml
18) T n-Dotriacontane (C32)	18.497	1964142	15.921 ug/ml
19) T n-Tetratriacontane (C34)	19.276	1968392	16.456 ug/ml
20) T n-Hexatriacontane (C36)	20.011	1998505	17.510 ug/ml
21) T n-Octatriacontane (C38)	20.730	1832902	17.452 ug/ml
22) T n-Tetracontane (C40)	21.605	1922096	17.899 ug/ml

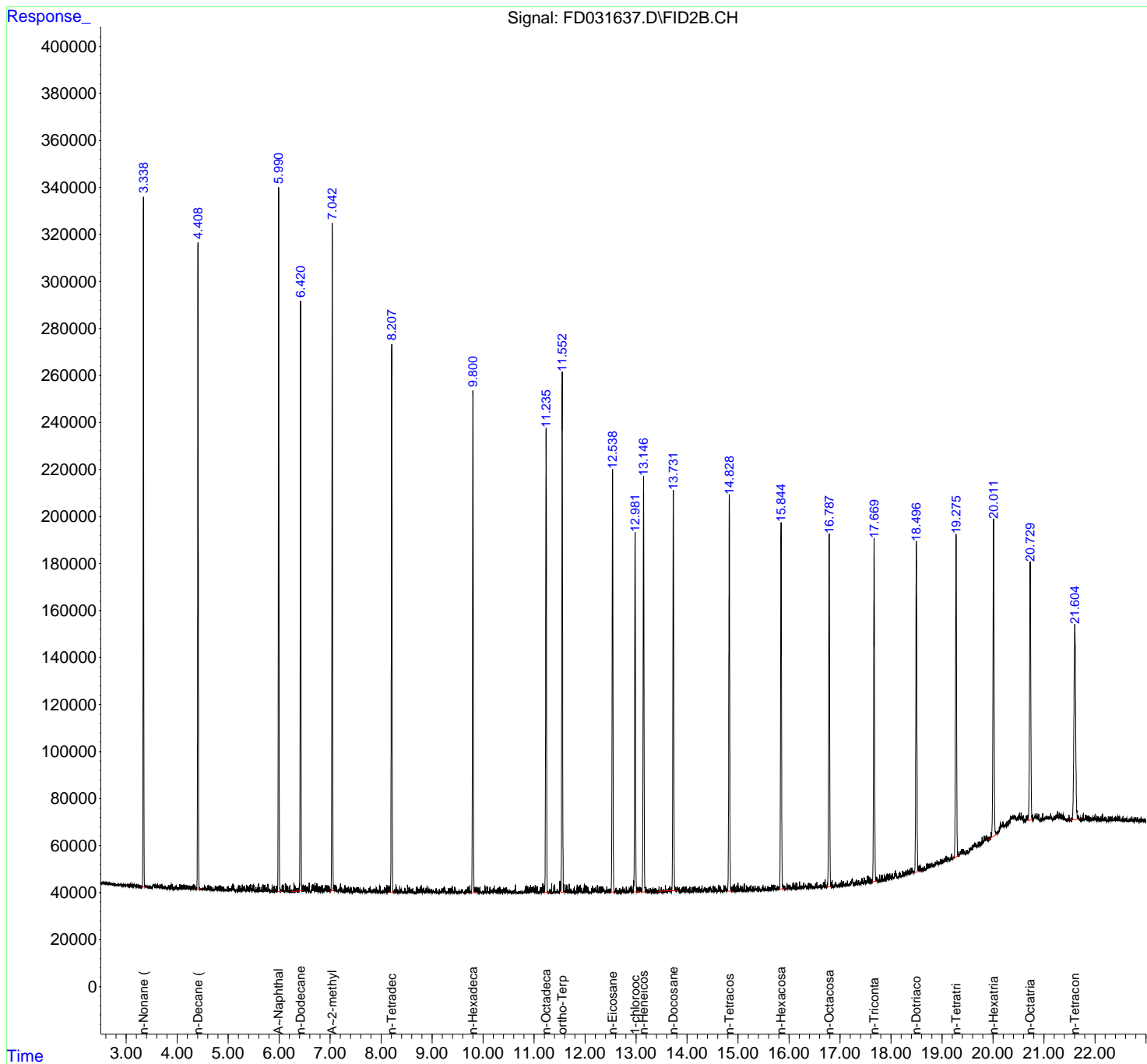
(f)=RT Delta > 1/2 Window

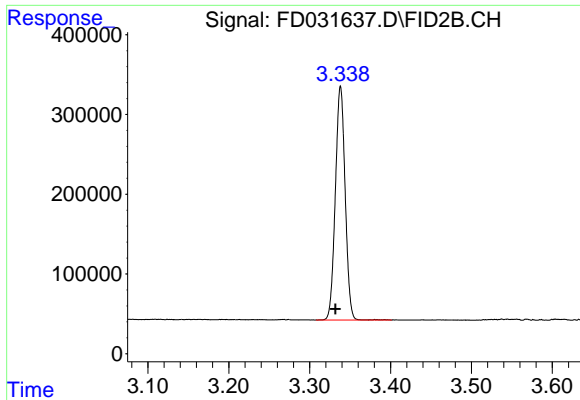
(m)=manual int.

Data Path : Z:\pestpcbsrv\HPCHEM1\FID_D\Data\FD112219AL\
 Data File : FD031637.D
 Signal(s) : FID2B.CH
 Acq On : 22 Nov 2019 14:52
 Operator : DD\AJ
 Sample : 20 PPM ALIPHATIC HC STD
 Misc :
 ALS Vial : 52 Sample Multiplier: 1

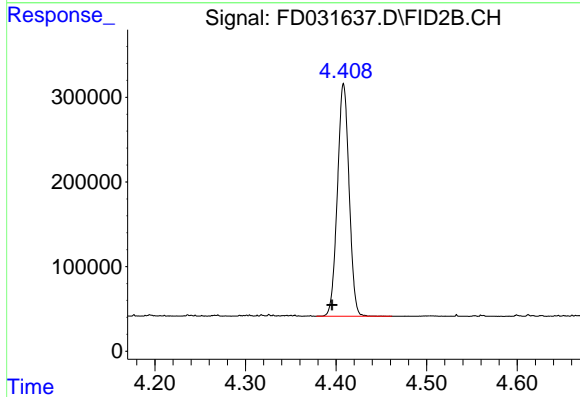
Integration File: autoint1.e
 Quant Time: Nov 22 21:58:11 2019
 Quant Method : Z:\pestpcbsrv\HPCHEM1\FID_D\methods\Aliphatic EPH 110519.M
 Quant Title : GC Extractables
 QLast Update : Wed Nov 06 06:45:13 2019
 Response via : Initial Calibration
 Integrator: ChemStation 6890 Scale Mode: Large solvent peaks clipped

Volume Inj. : 1 ul
 Signal Phase : Rxi-1ms
 Signal Info : 20M x 0.18mm x 0.18um

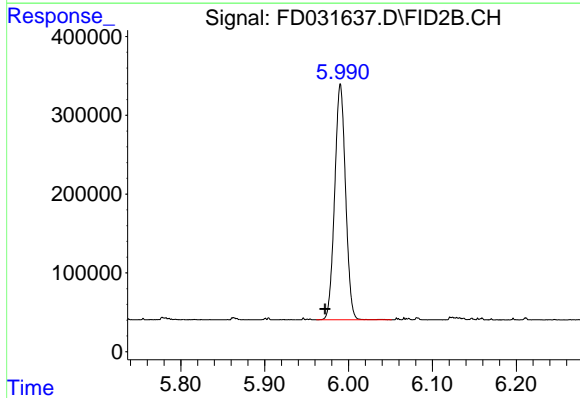




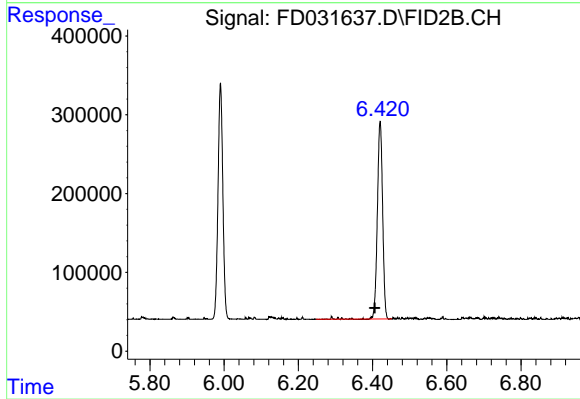
#1 n-Nonane (C9)
R.T.: 3.338 min
Delta R.T.: 0.006 min
Response: 2462582
Conc: 18.56 ug/ml



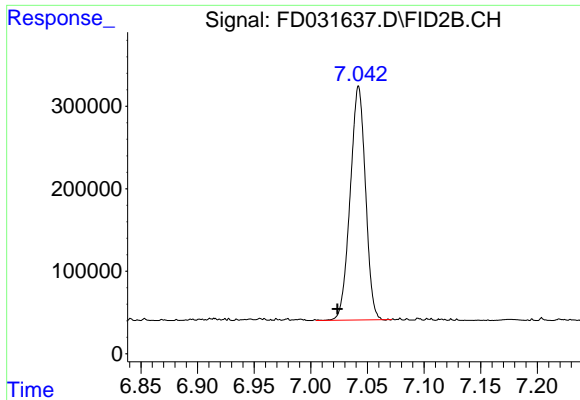
#2 n-Decane (C10)
R.T.: 4.408 min
Delta R.T.: 0.013 min
Response: 2461841
Conc: 18.46 ug/ml



#3 A~Naphthalene (C11.7)
R.T.: 5.990 min
Delta R.T.: 0.018 min
Response: 2697026
Conc: 18.01 ug/ml

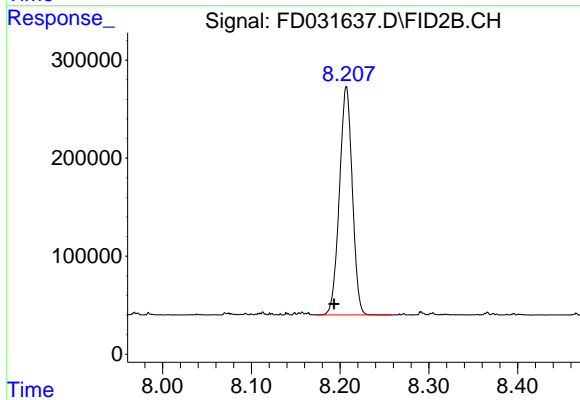


#4 n-Dodecane (C12)
R.T.: 6.420 min
Delta R.T.: 0.014 min
Response: 2463540
Conc: 18.29 ug/ml



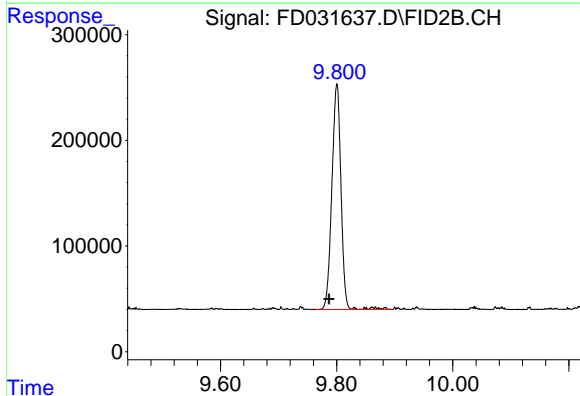
#5 A~2-methylnaphthalene (C12.89)

R.T.: 7.042 min
Delta R.T.: 0.019 min
Response: 2662794
Conc: 17.57 ug/ml



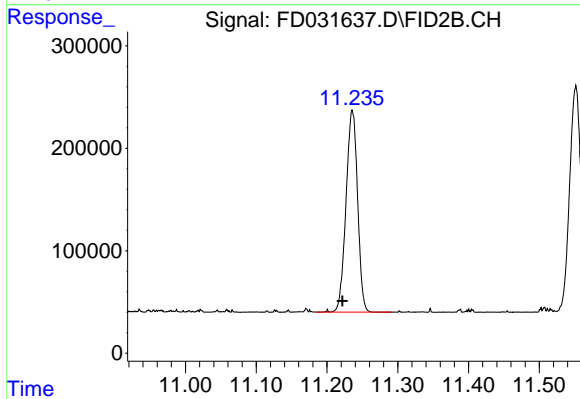
#6 n-Tetradecane (C14)

R.T.: 8.207 min
Delta R.T.: 0.014 min
Response: 2352090
Conc: 17.46 ug/ml



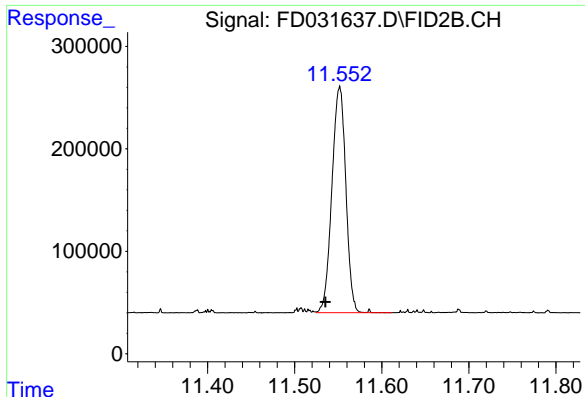
#7 n-Hexadecane (C16)

R.T.: 9.800 min
Delta R.T.: 0.013 min
Response: 2325890
Conc: 17.35 ug/ml



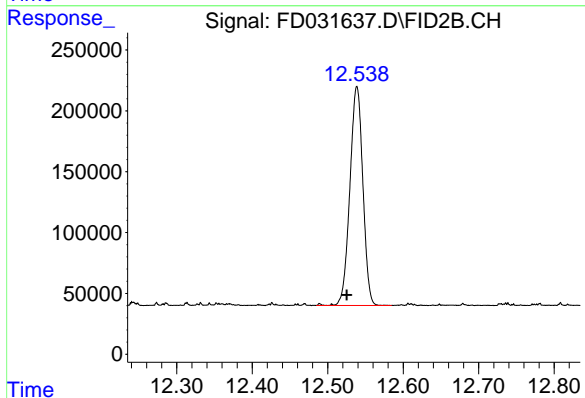
#8 n-Octadecane (C18)

R.T.: 11.236 min
Delta R.T.: 0.014 min
Response: 2241169
Conc: 16.80 ug/ml



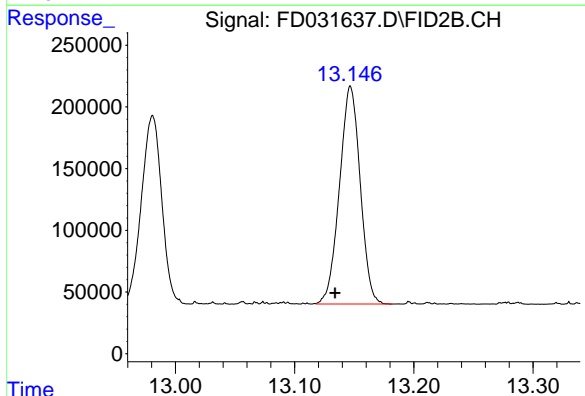
#9 ortho-Terphenyl (SURR)

R.T.: 11.551 min
Delta R.T.: 0.016 min
Response: 2449571
Conc: 16.10 ug/ml



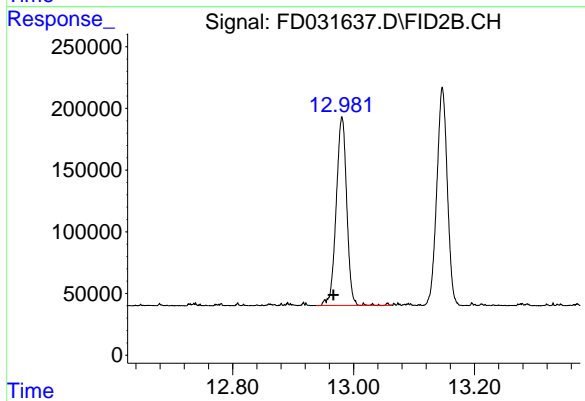
#10 n-Eicosane (C20)

R.T.: 12.539 min
Delta R.T.: 0.013 min
Response: 2147282
Conc: 16.28 ug/ml



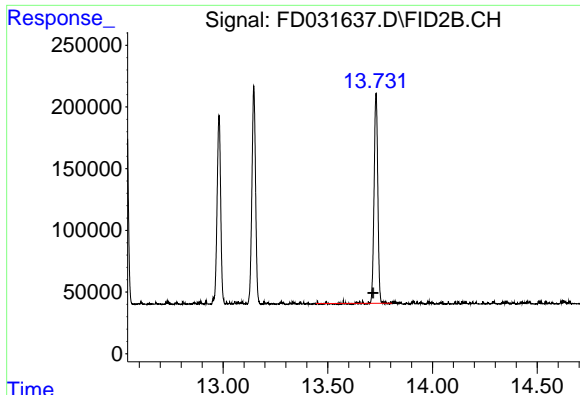
#11 n-Heneicosane (C21)

R.T.: 13.147 min
Delta R.T.: 0.013 min
Response: 2131092
Conc: 16.10 ug/ml



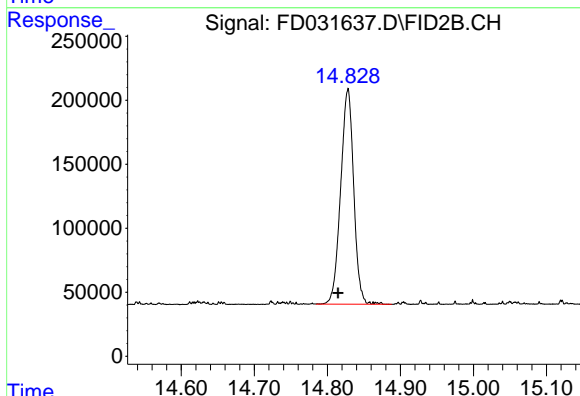
#12 1-chlorooctadecane (SURR)

R.T.: 12.981 min
Delta R.T.: 0.014 min
Response: 1845117
Conc: 16.24 ug/ml



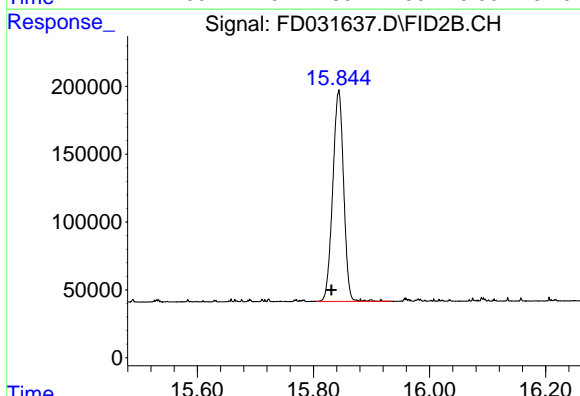
#13 n-Docosane (C22)

R.T.: 13.730 min
Delta R.T.: 0.013 min
Response: 2088617
Conc: 15.91 ug/ml



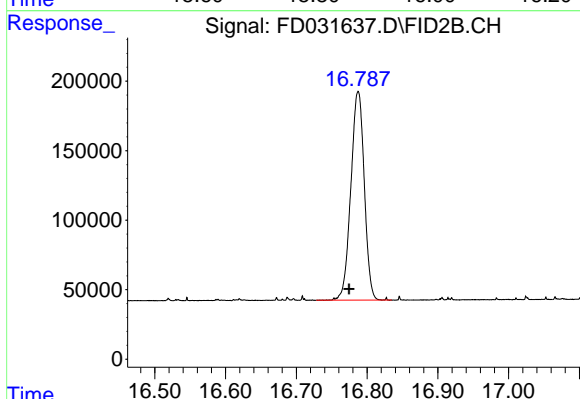
#14 n-Tetracosane (C24)

R.T.: 14.828 min
Delta R.T.: 0.013 min
Response: 2090944
Conc: 15.98 ug/ml



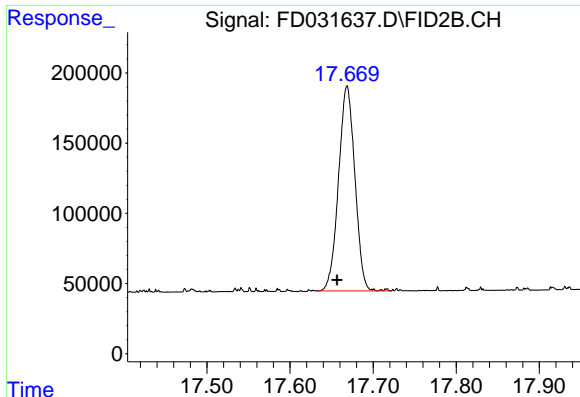
#15 n-Hexacosane (C26)

R.T.: 15.843 min
Delta R.T.: 0.013 min
Response: 2025682
Conc: 15.68 ug/ml



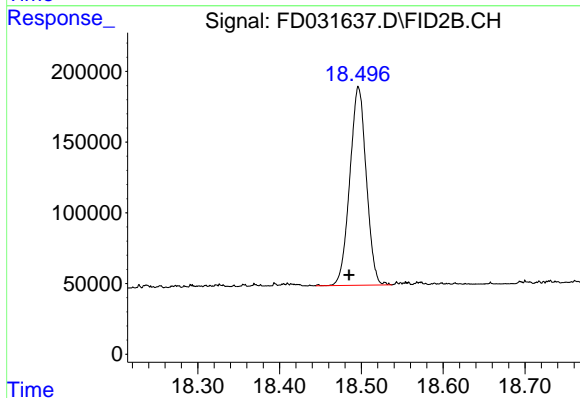
#16 n-Octacosane (C28)

R.T.: 16.787 min
Delta R.T.: 0.013 min
Response: 1983226
Conc: 15.50 ug/ml



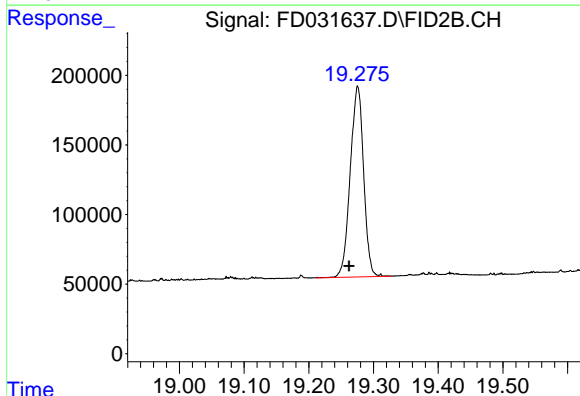
#17 n-Tricontane (C30)

R.T.: 17.669 min
Delta R.T.: 0.012 min
Response: 1993988
Conc: 15.63 ug/ml



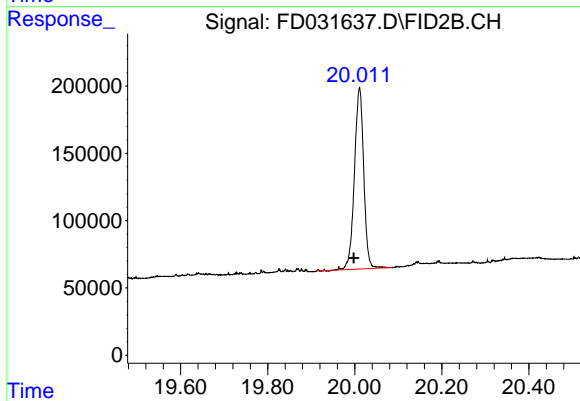
#18 n-Dotriacontane (C32)

R.T.: 18.497 min
Delta R.T.: 0.012 min
Response: 1964142
Conc: 15.92 ug/ml



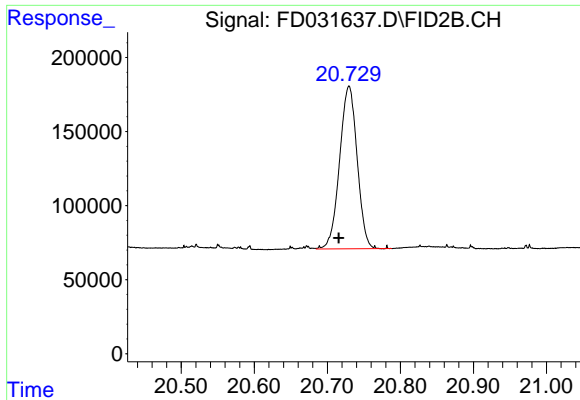
#19 n-Tetratriacontane (C34)

R.T.: 19.276 min
Delta R.T.: 0.013 min
Response: 1968392
Conc: 16.46 ug/ml



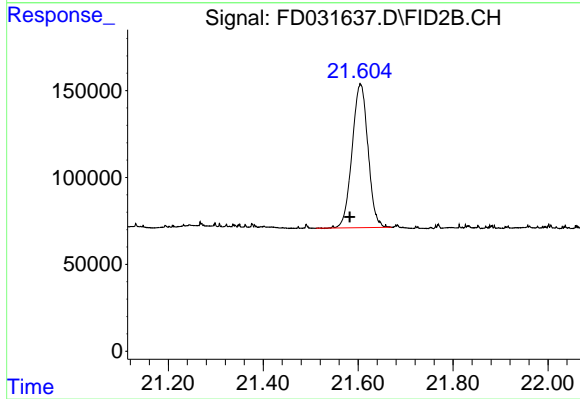
#20 n-Hexatriacontane (C36)

R.T.: 20.011 min
Delta R.T.: 0.013 min
Response: 1998505
Conc: 17.51 ug/ml



#21 n-Octatriacontane (C38)

R.T.: 20.730 min
Delta R.T.: 0.014 min
Response: 1832902
Conc: 17.45 ug/ml



#22 n-Tetracontane (C40)

R.T.: 21.605 min
Delta R.T.: 0.023 min
Response: 1922096
Conc: 17.90 ug/ml