

Data Path : Z:\pestpcbsrv\HPCHEM1\FID_D\Data\FD112219AL\
 Data File : FD031663.D
 Signal(s) : FID2B.CH
 Acq On : 23 Nov 2019 6:38
 Operator : DD\AJ
 Sample : K5670-11
 Misc :
 ALS Vial : 76 Sample Multiplier: 1

Integration File: autoint1.e
 Quant Time: Nov 25 00:14:20 2019
 Quant Method : Z:\pestpcbsrv\HPCHEM1\FID_D\methods\Alaphatic EPH 110519.M
 Quant Title : GC Extractables
 QLast Update : Wed Nov 06 06:45:13 2019
 Response via : Initial Calibration
 Integrator: ChemStation 6890 Scale Mode: Large solvent peaks clipped

Volume Inj. : 1 ul
 Signal Phase : Rxi-1ms
 Signal Info : 20M x 0.18mm x 0.18um

Compound	R.T.	Response	Conc Units

System Monitoring Compounds			
9) S ortho-Terphenyl (SURR)	11.553	5893475	38.732 ug/ml
Spiked Amount	50.000	Recovery	= 77.46%
12) S 1-chlorooctadecane (S...	12.981	4703856	41.395 ug/ml
Spiked Amount	50.000	Recovery	= 82.79%
Target Compounds			
3) T A~Naphthalene (C11.7)	5.989	93836	0.627 ug/ml
5) T A~2-methylnaphthalene...	7.039	88738	0.585 ug/ml
6) T n-Tetradecane (C14)	8.132f	140343	1.042 ug/ml
7) T n-Hexadecane (C16)	9.803	196647	1.467 ug/ml
8) T n-Octadecane (C18)	11.233	128625	0.964 ug/ml
10) T n-Eicosane (C20)	12.517	301272	2.284 ug/ml
11) T n-Heneicosane (C21)	13.154	472604	3.572 ug/ml
13) T n-Docosane (C22)	13.753	727366	5.539 ug/ml
14) T n-Tetracosane (C24)	14.802	1811096	13.840 ug/ml
15) T n-Hexacosane (C26)	15.845	341191	2.641 ug/ml
16) T n-Octacosane (C28)	16.787	816439	6.380 ug/ml
17) T n-Tricontane (C30)	17.670	804413	6.306 ug/ml
18) T n-Dotriacontane (C32)	18.496	376964	3.056 ug/ml
19) T n-Tetratriacontane (C34)	19.280	281942	2.357 ug/ml
20) T n-Hexatriacontane (C36)	20.014	105736	0.926 ug/ml
21) T n-Octatriacontane (C38)	20.730	348253	3.316 ug/ml
22) T n-Tetracontane (C40)	21.611	810673	7.549 ug/ml

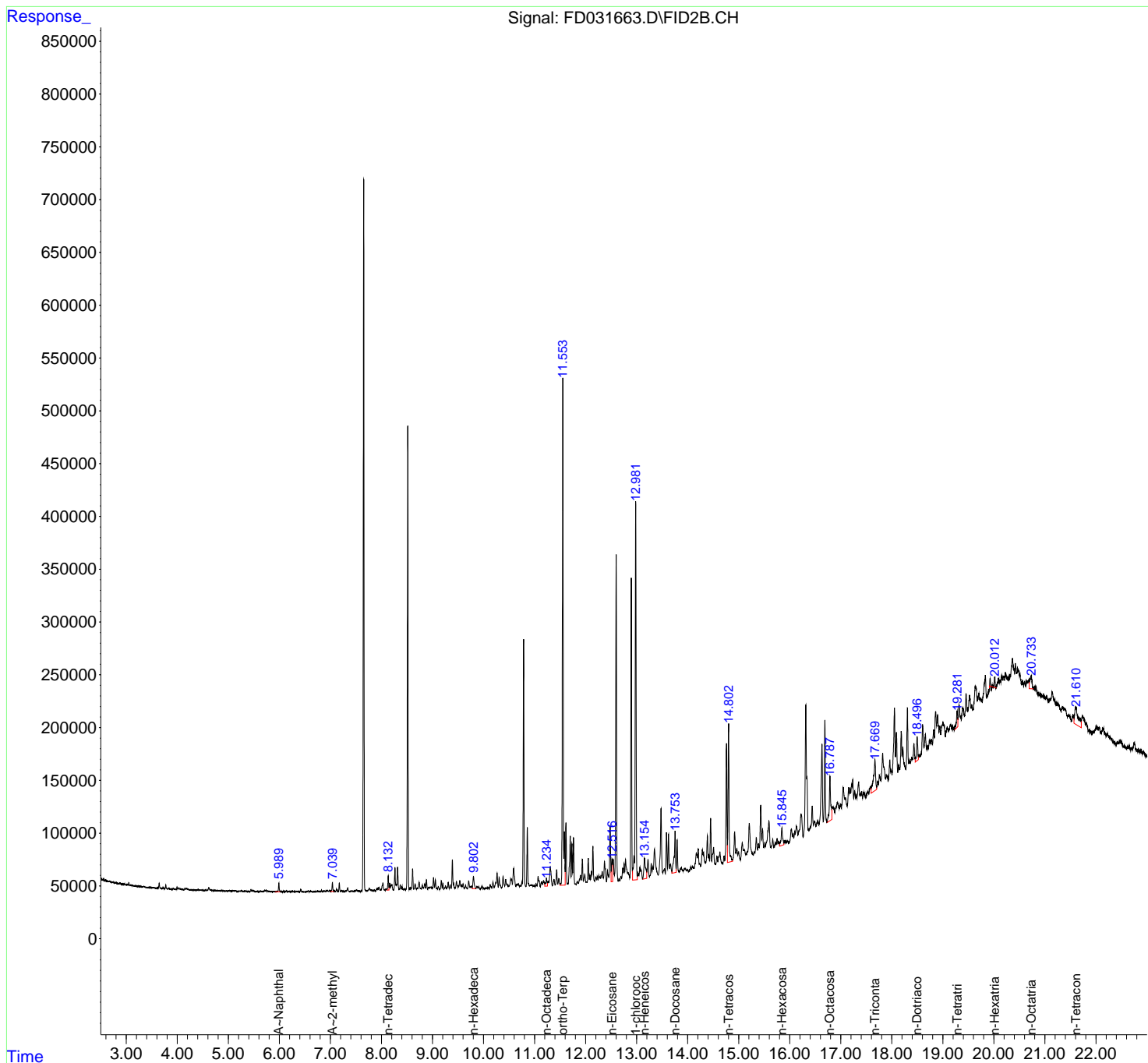
(f)=RT Delta > 1/2 Window

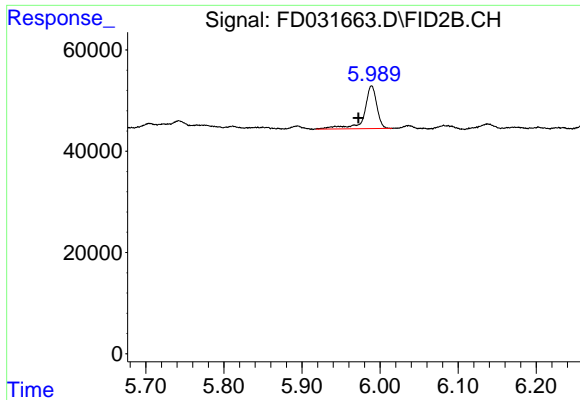
(m)=manual int.

Data Path : Z:\pestpcbsrv\HPCHEM1\FID_D\Data\FD112219AL\
 Data File : FD031663.D
 Signal(s) : FID2B.CH
 Acq On : 23 Nov 2019 6:38
 Operator : DD\AJ
 Sample : K5670-11
 Misc :
 ALS Vial : 76 Sample Multiplier: 1

Integration File: autoint1.e
 Quant Time: Nov 25 00:14:20 2019
 Quant Method : Z:\pestpcbsrv\HPCHEM1\FID_D\methods\Alaphatic EPH 110519.M
 Quant Title : GC Extractables
 QLast Update : Wed Nov 06 06:45:13 2019
 Response via : Initial Calibration
 Integrator: ChemStation 6890 Scale Mode: Large solvent peaks clipped

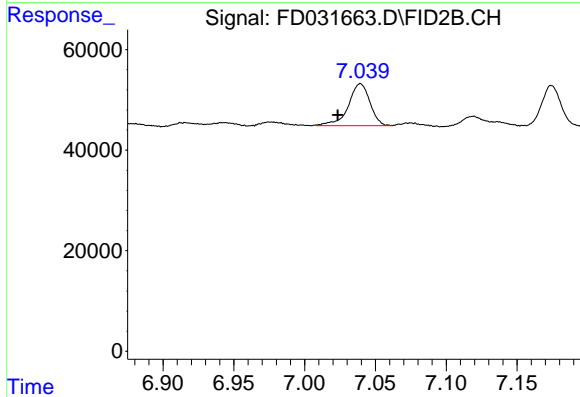
Volume Inj. : 1 ul
 Signal Phase : Rxi-1ms
 Signal Info : 20M x 0.18mm x 0.18um





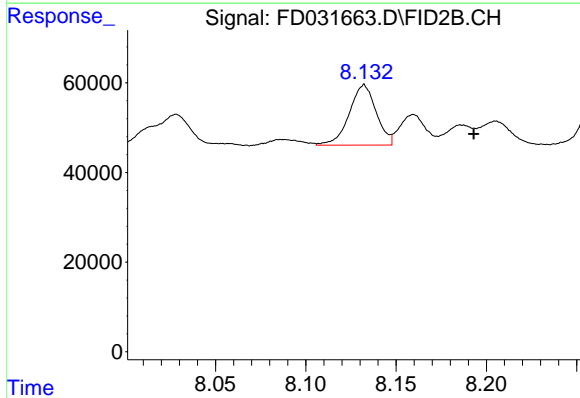
#3 A~Naphthalene (C11.7)

R.T.: 5.989 min
 Delta R.T.: 0.017 min
 Response: 93836
 Conc: 0.63 ug/ml



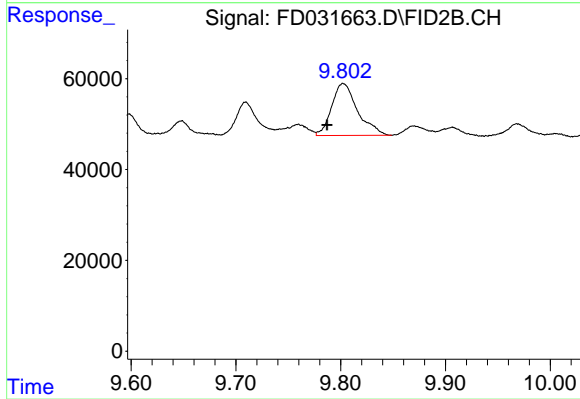
#5 A~2-methylnaphthalene (C12.89)

R.T.: 7.039 min
 Delta R.T.: 0.016 min
 Response: 88738
 Conc: 0.59 ug/ml



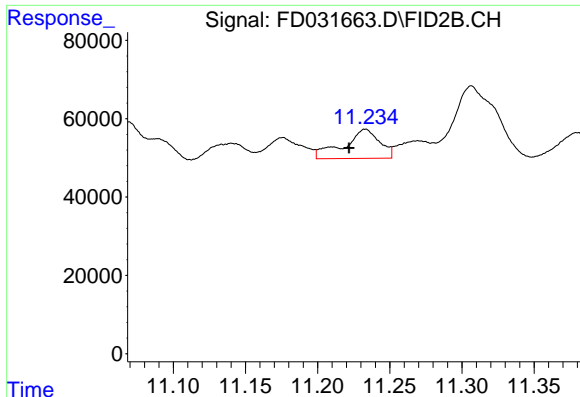
#6 n-Tetradecane (C14)

R.T.: 8.132 min
 Delta R.T.: -0.061 min
 Response: 140343
 Conc: 1.04 ug/ml



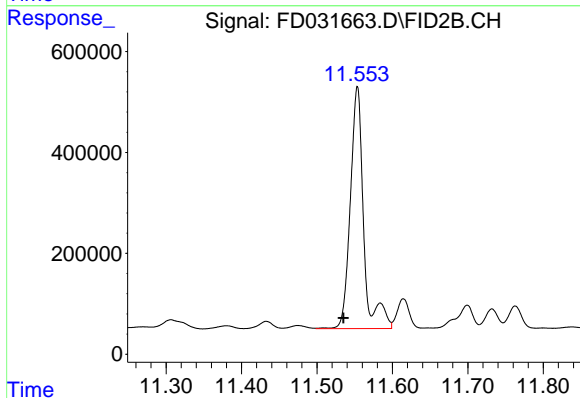
#7 n-Hexadecane (C16)

R.T.: 9.803 min
 Delta R.T.: 0.016 min
 Response: 196647
 Conc: 1.47 ug/ml



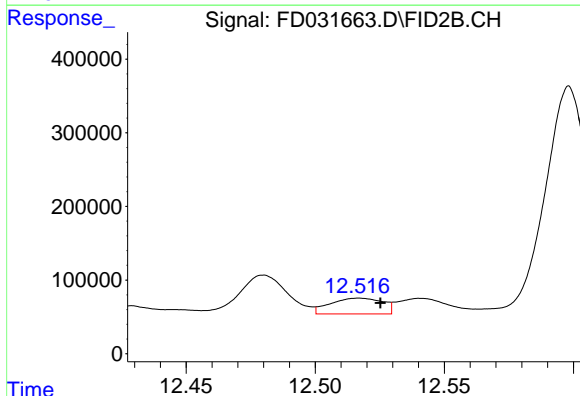
#8 n-Octadecane (C18)

R.T.: 11.233 min
Delta R.T.: 0.011 min
Response: 128625
Conc: 0.96 ug/ml



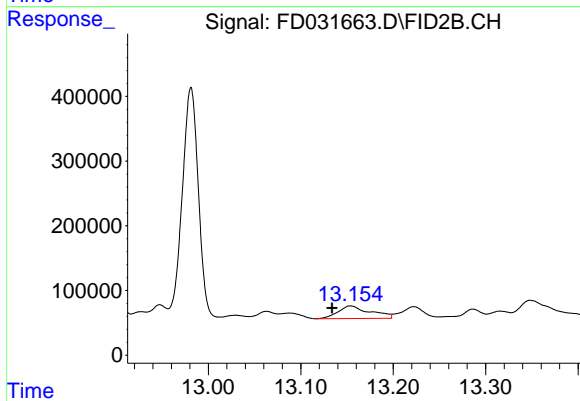
#9 ortho-Terphenyl (SURR)

R.T.: 11.553 min
Delta R.T.: 0.018 min
Response: 5893475
Conc: 38.73 ug/ml



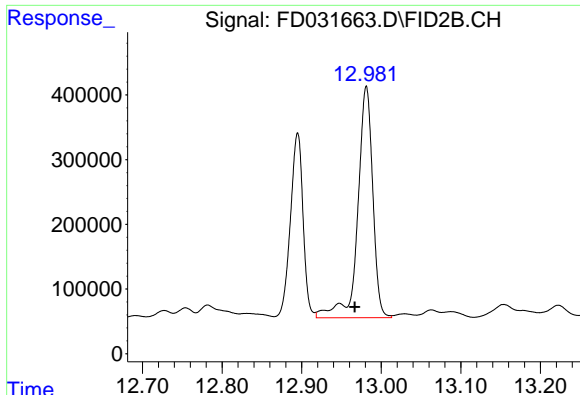
#10 n-Eicosane (C20)

R.T.: 12.517 min
Delta R.T.: -0.008 min
Response: 301272
Conc: 2.28 ug/ml



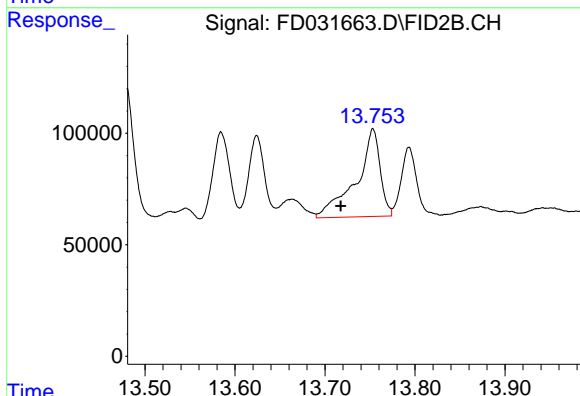
#11 n-Heneicosane (C21)

R.T.: 13.154 min
Delta R.T.: 0.020 min
Response: 472604
Conc: 3.57 ug/ml



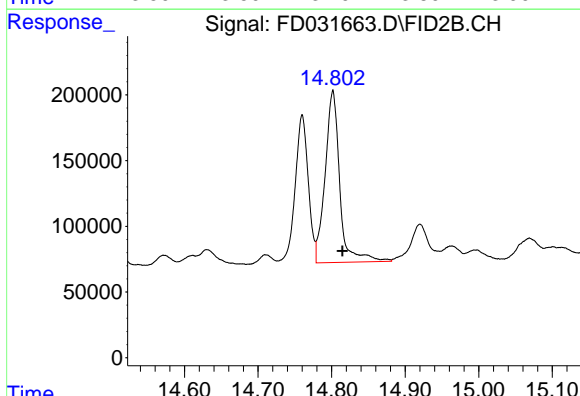
#12 1-chlorooctadecane (SURR)

R.T.: 12.981 min
Delta R.T.: 0.015 min
Response: 4703856
Conc: 41.39 ug/ml



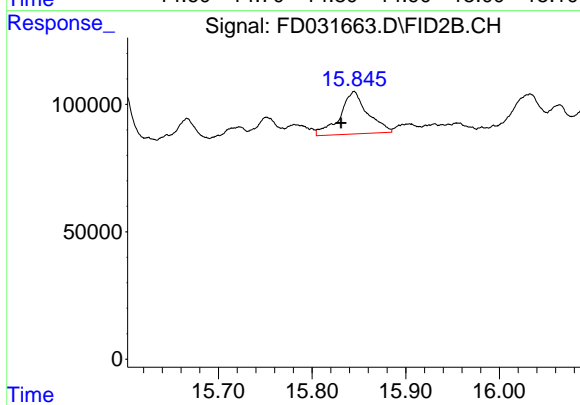
#13 n-Docosane (C22)

R.T.: 13.753 min
Delta R.T.: 0.036 min
Response: 727366
Conc: 5.54 ug/ml



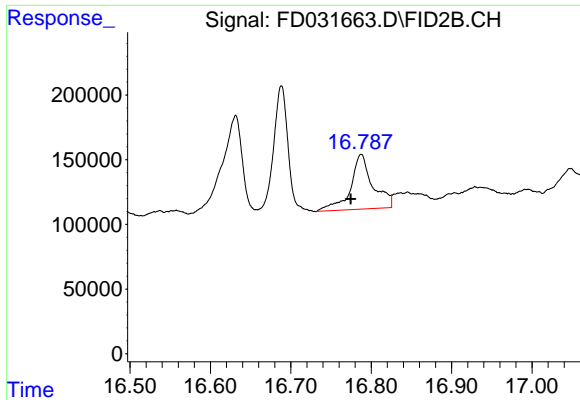
#14 n-Tetracosane (C24)

R.T.: 14.802 min
Delta R.T.: -0.013 min
Response: 1811096
Conc: 13.84 ug/ml

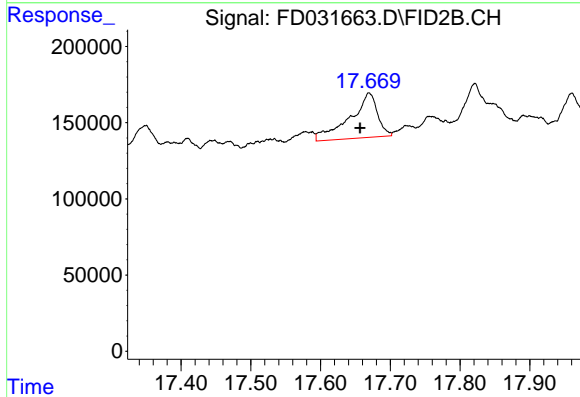


#15 n-Hexacosane (C26)

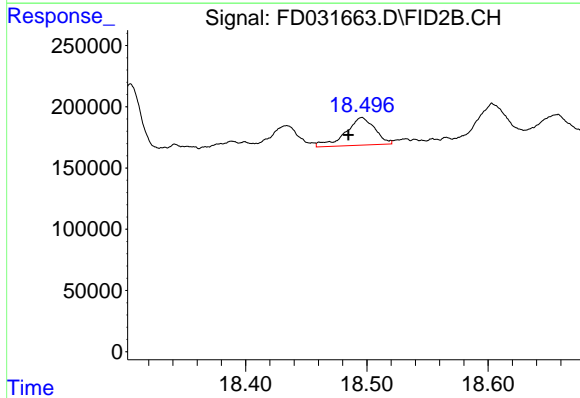
R.T.: 15.845 min
Delta R.T.: 0.014 min
Response: 341191
Conc: 2.64 ug/ml



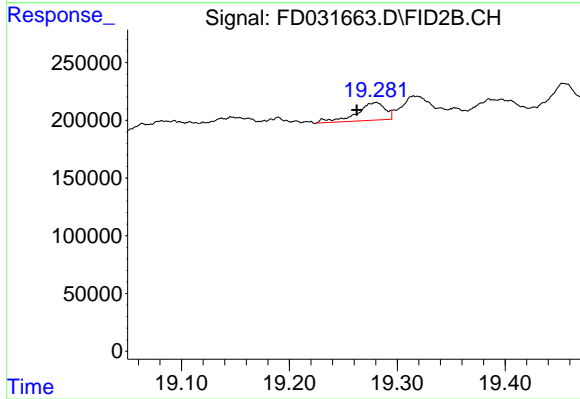
#16 n-Octacosane (C28)
 R.T.: 16.787 min
 Delta R.T.: 0.013 min
 Response: 816439
 Conc: 6.38 ug/ml



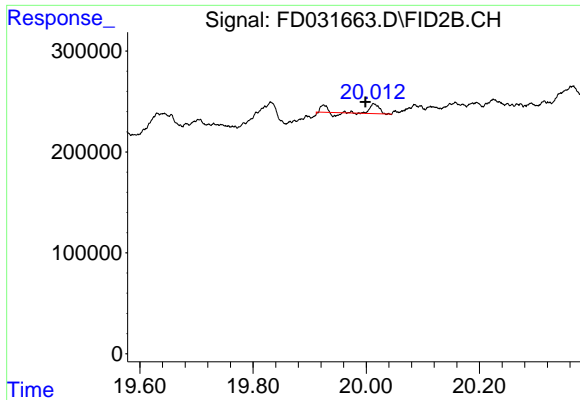
#17 n-Tricontane (C30)
 R.T.: 17.670 min
 Delta R.T.: 0.013 min
 Response: 804413
 Conc: 6.31 ug/ml



#18 n-Dotriacontane (C32)
 R.T.: 18.496 min
 Delta R.T.: 0.011 min
 Response: 376964
 Conc: 3.06 ug/ml

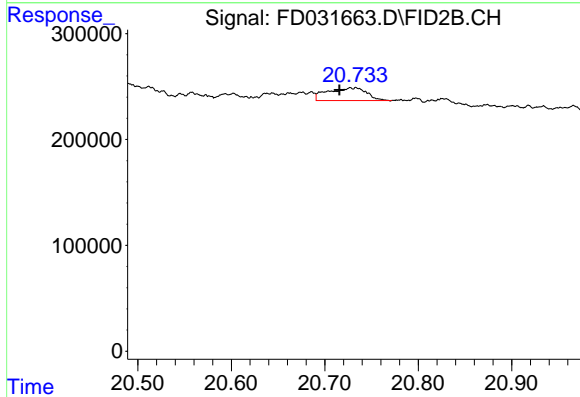


#19 n-Tetratriacontane (C34)
 R.T.: 19.280 min
 Delta R.T.: 0.017 min
 Response: 281942
 Conc: 2.36 ug/ml



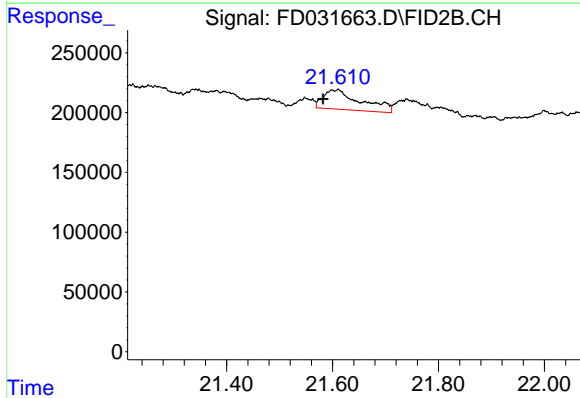
#20 n-Hexatriacontane (C36)

R.T.: 20.014 min
Delta R.T.: 0.016 min
Response: 105736
Conc: 0.93 ug/ml



#21 n-Octatriacontane (C38)

R.T.: 20.730 min
Delta R.T.: 0.015 min
Response: 348253
Conc: 3.32 ug/ml



#22 n-Tetracontane (C40)

R.T.: 21.611 min
Delta R.T.: 0.028 min
Response: 810673
Conc: 7.55 ug/ml