

Data Path : Z:\pestpcbsrv\HPCHEM1\FID\_D\Data\FD112224AR\  
 Data File : FD048801.D  
 Signal(s) : FID2B.ch  
 Acq On : 22 Nov 2024 11:32  
 Operator : YP/AJ  
 Sample : PB165188BS  
 Misc :  
 ALS Vial : 62 Sample Multiplier: 1

Instrument :  
 FID\_D  
 ClientSampleId :

Integration File: autoint1.e  
 Quant Time: Nov 22 23:07:46 2024  
 Quant Method : Z:\pestpcbsrv\HPCHEM1\FID\_D\methods\Aromatic EPH 111424.M  
 Quant Title : GC Extractables  
 QLast Update : Thu Nov 14 14:16:25 2024  
 Response via : Initial Calibration  
 Integrator: ChemStation

Volume Inj. : 1 µl  
 Signal Phase : Rxi-1ms  
 Signal Info : 20M x 0.18mm x 0.18µm

| Compound                           | R.T.   | Response   | Conc Units   |
|------------------------------------|--------|------------|--------------|
| -----                              |        |            |              |
| System Monitoring Compounds        |        |            |              |
| 4) S 2-Bromonaphthalene (S...      | 7.368  | 9688397    | 55.029 ug/ml |
| Spiked Amount 50.000               |        | Recovery = | 110.06%      |
| 6) S 2-Fluorobiphenyl (SURR)       | 8.218  | 5811070    | 50.456 ug/ml |
| Spiked Amount 50.000 Range 0 - 131 |        | Recovery = | 100.91%      |
| 11) S ortho-Terphenyl (SURR)       | 11.255 | 9064758    | 47.130 ug/ml |
| Spiked Amount 50.000               |        | Recovery = | 94.26%       |
| Target Compounds                   |        |            |              |
| 1) T 1,2,3-Trimethylbenzen...      | 4.190  | 8022592    | 42.569 ug/ml |
| 2) T Naphthalene (C11.7)           | 5.707  | 9642256    | 49.302 ug/ml |
| 3) T 2-Methylnaphthalene (...)     | 6.754  | 9471968    | 49.564 ug/ml |
| 5) T Acenaphthylene (C15.06)       | 8.022  | 10883130   | 56.120 ug/ml |
| 7) T Acenaphthene (C15.5)          | 8.318  | 11279322   | 58.641 ug/ml |
| 8) T Flouorene (C16.55)            | 9.096  | 11187059   | 58.311 ug/ml |
| 9) T Phenanthrene (C19.36)         | 10.485 | 10942980   | 59.699 ug/ml |
| 10) T Anthracene (C19.43)          | 10.561 | 10960786   | 58.529 ug/ml |
| 12) T Fluoranthene (C21.85)        | 12.291 | 12343431   | 67.405 ug/ml |
| 13) T Pyrene (C20.8)               | 12.584 | 10787764   | 59.669 ug/ml |
| 14) T Benzo[a]anthracene (C...     | 14.455 | 10160147   | 61.763 ug/ml |
| 15) T Chrysene (C27.41)            | 14.499 | 9987909    | 57.069 ug/ml |
| 16) T benzo[b]fluoranthene ...     | 16.005 | 9690316    | 61.675 ug/ml |
| 17) T Bnezo[k]fluoranthene ...     | 16.005 | 9690316    | 59.378 ug/ml |
| 18) T Benzo[a]pyrene (C31.34)      | 16.381 | 9142325    | 61.318 ug/ml |
| 19) T Indeno[1,2,3-cd]pyren...     | 17.750 | 9033775    | 73.130 ug/ml |
| 20) T Dibenz[a,h]anthracene...     | 17.786 | 8474013    | 54.039 ug/ml |
| 21) T Benzo[g,h,i]perylene ...     | 18.003 | 8618727    | 60.403 ug/ml |

(f)=RT Delta > 1/2 Window

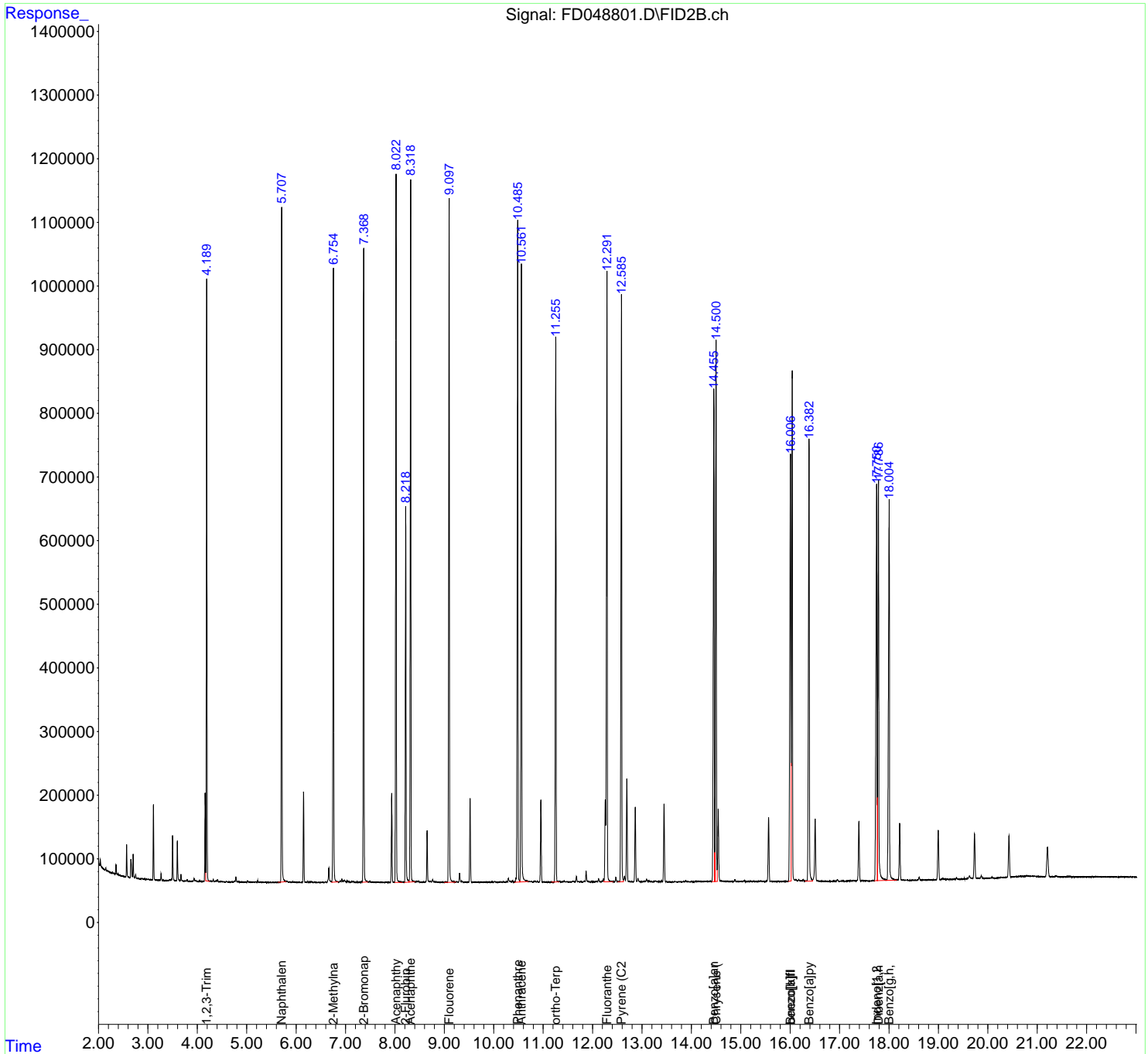
(m)=manual int.

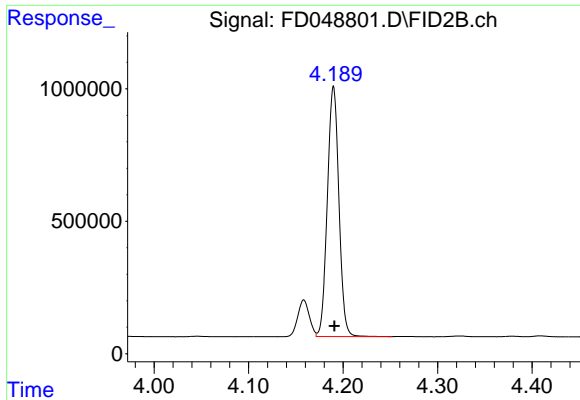
Data Path : Z:\pestpcbsrv\HPCHEM1\FID\_D\Data\FD112224AR\  
 Data File : FD048801.D  
 Signal(s) : FID2B.ch  
 Acq On : 22 Nov 2024 11:32  
 Operator : YP/AJ  
 Sample : PB165188BS  
 Misc :  
 ALS Vial : 62 Sample Multiplier: 1

Instrument :  
 FID\_D  
 ClientSampleId :

Integration File: autoint1.e  
 Quant Time: Nov 22 23:07:46 2024  
 Quant Method : Z:\pestpcbsrv\HPCHEM1\FID\_D\methods\Aromatic EPH 111424.M  
 Quant Title : GC Extractables  
 QLast Update : Thu Nov 14 14:16:25 2024  
 Response via : Initial Calibration  
 Integrator: ChemStation

Volume Inj. : 1 µl  
 Signal Phase : Rxi-1ms  
 Signal Info : 20M x 0.18mm x 0.18µm

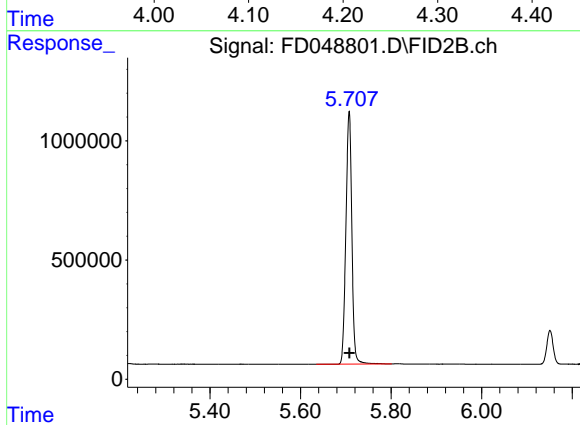




#1 1,2,3-Trimethylbenzene (C10.1)

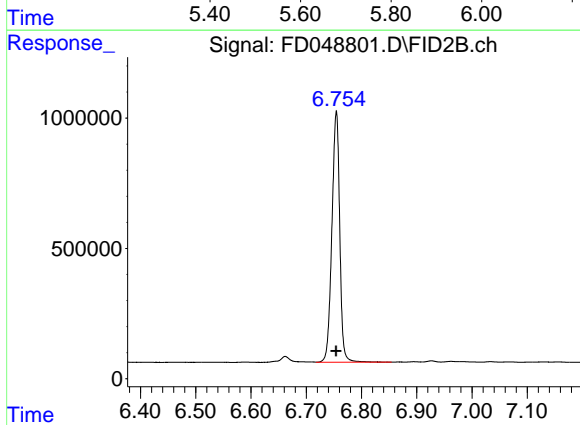
R.T.: 4.190 min  
Delta R.T.: -0.001 min  
Response: 8022592  
Conc: 42.57 ug/ml

Instrument :  
FID\_D  
ClientSampleId :



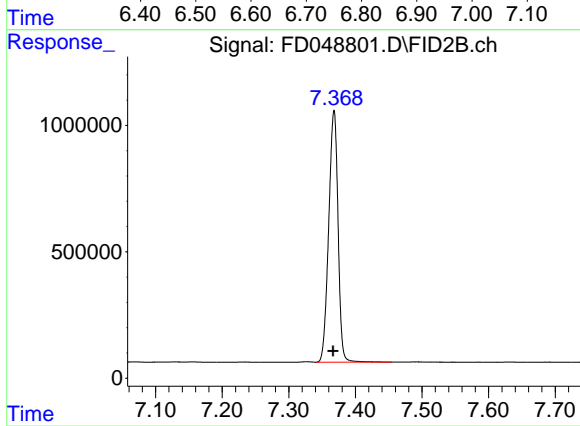
#2 Naphthalene (C11.7)

R.T.: 5.707 min  
Delta R.T.: 0.000 min  
Response: 9642256  
Conc: 49.30 ug/ml



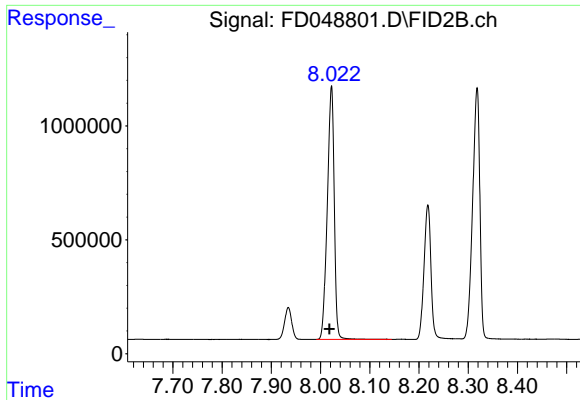
#3 2-Methylnaphthalene (C12.89)

R.T.: 6.754 min  
Delta R.T.: 0.000 min  
Response: 9471968  
Conc: 49.56 ug/ml



#4 2-Bromonaphthalene (SURR)

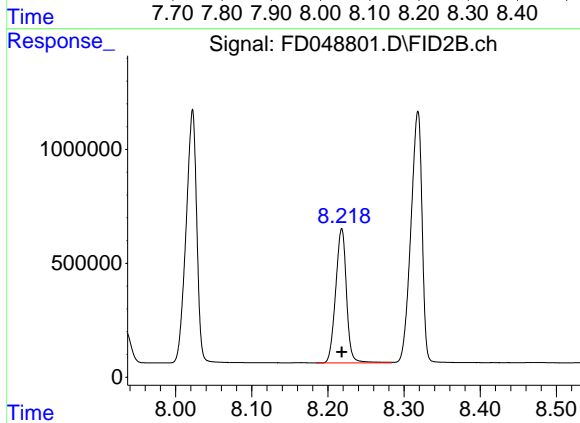
R.T.: 7.368 min  
Delta R.T.: 0.001 min  
Response: 9688397  
Conc: 55.03 ug/ml



#5 Acenaphthylene (C15.06)

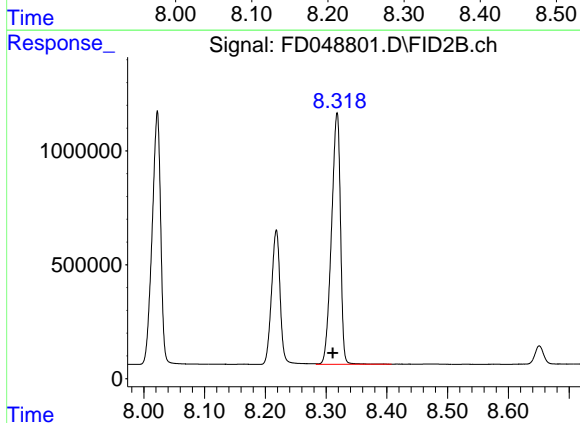
R.T.: 8.022 min  
Delta R.T.: 0.004 min  
Response: 10883130  
Conc: 56.12 ug/ml

Instrument :  
FID\_D  
ClientSampleId :



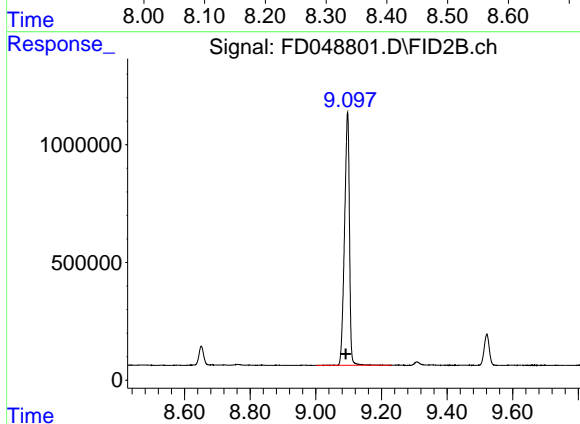
#6 2-Fluorobiphenyl (SURR)

R.T.: 8.218 min  
Delta R.T.: 0.000 min  
Response: 5811070  
Conc: 50.46 ug/ml



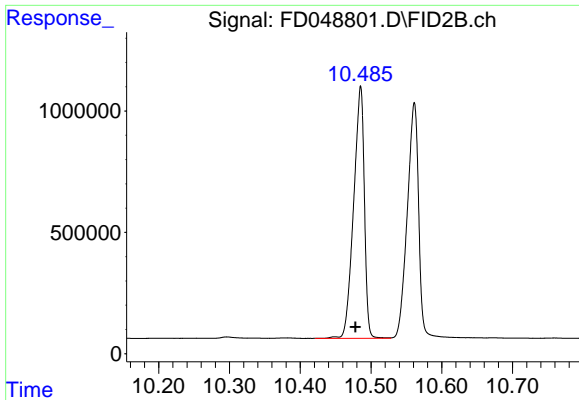
#7 Acenaphthene (C15.5)

R.T.: 8.318 min  
Delta R.T.: 0.006 min  
Response: 11279322  
Conc: 58.64 ug/ml



#8 Fluorene (C16.55)

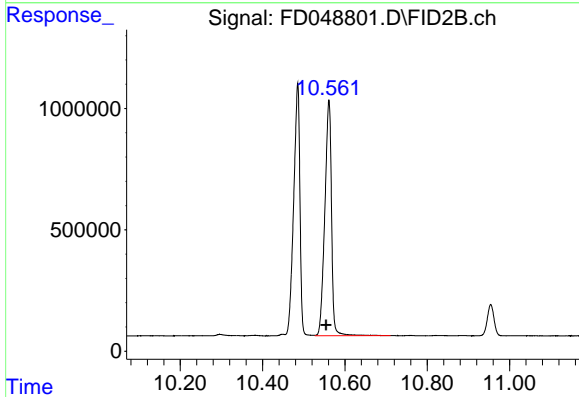
R.T.: 9.096 min  
Delta R.T.: 0.005 min  
Response: 11187059  
Conc: 58.31 ug/ml



#9 Phenanthrene (C19.36)

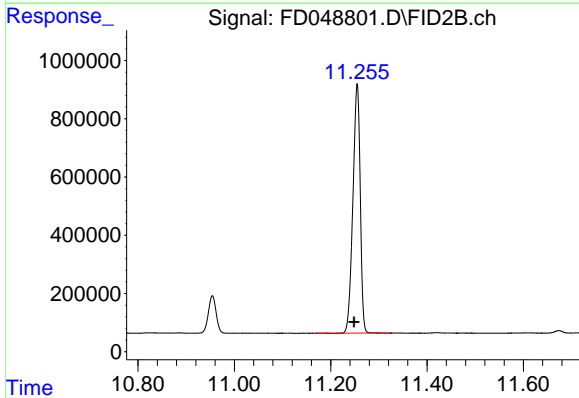
R.T.: 10.485 min  
 Delta R.T.: 0.007 min  
 Response: 10942980  
 Conc: 59.70 ug/ml

Instrument :  
 FID\_D  
 ClientSampleId :



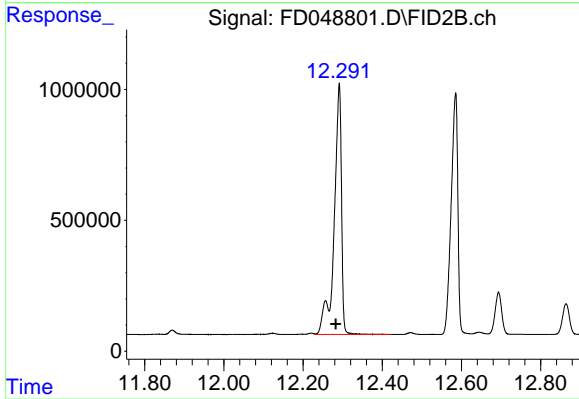
#10 Anthracene (C19.43)

R.T.: 10.561 min  
 Delta R.T.: 0.006 min  
 Response: 10960786  
 Conc: 58.53 ug/ml



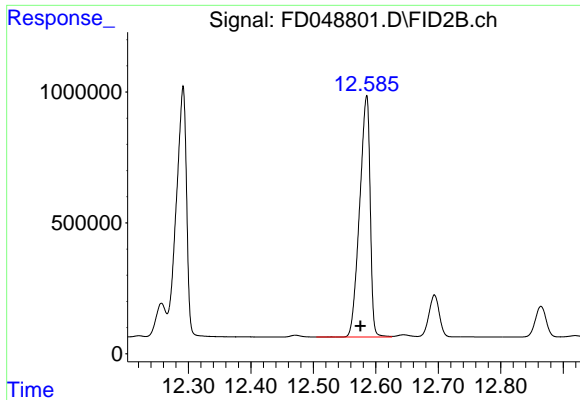
#11 ortho-Terphenyl (SURR)

R.T.: 11.255 min  
 Delta R.T.: 0.006 min  
 Response: 9064758  
 Conc: 47.13 ug/ml



#12 Fluoranthene (C21.85)

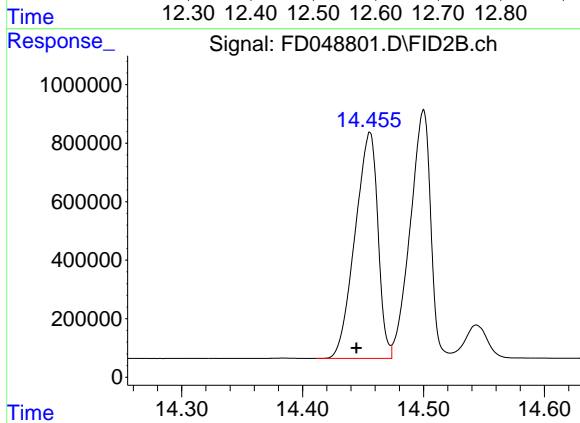
R.T.: 12.291 min  
 Delta R.T.: 0.008 min  
 Response: 12343431  
 Conc: 67.41 ug/ml



#13 Pyrene (C20.8)

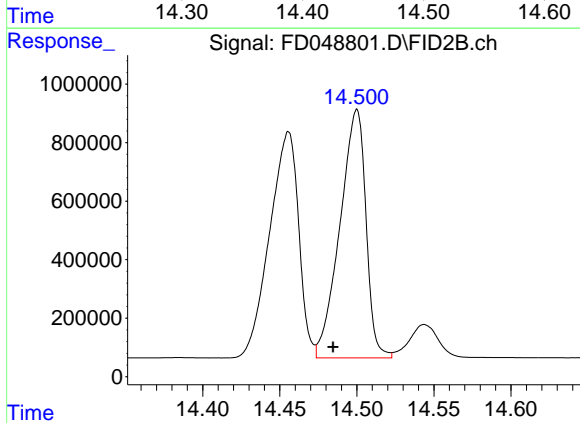
R.T.: 12.584 min  
 Delta R.T.: 0.009 min  
 Response: 10787764  
 Conc: 59.67 ug/ml

Instrument :  
 FID\_D  
 ClientSampleId :



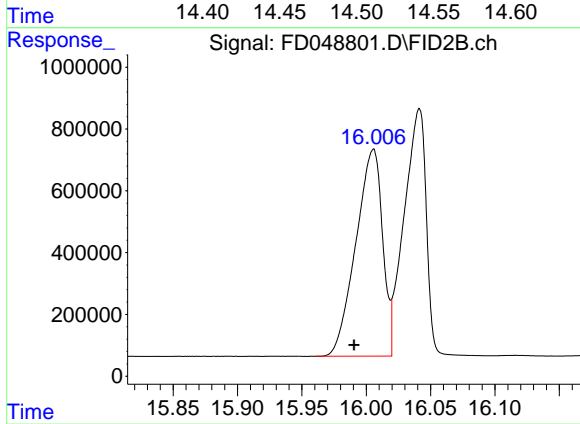
#14 Benzo[a]anthracene (C26.37)

R.T.: 14.455 min  
 Delta R.T.: 0.010 min  
 Response: 10160147  
 Conc: 61.76 ug/ml



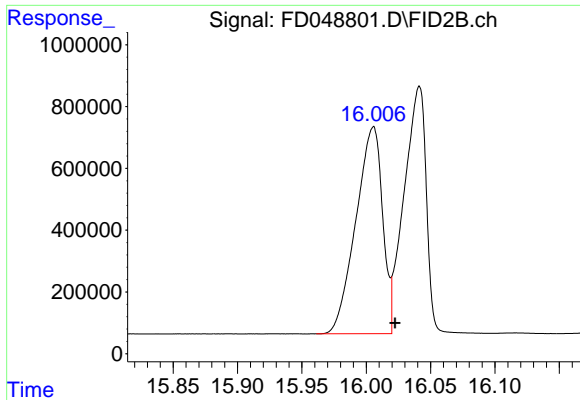
#15 Chrysene (C27.41)

R.T.: 14.499 min  
 Delta R.T.: 0.015 min  
 Response: 9987909  
 Conc: 57.07 ug/ml



#16 benzo[b]fluoranthene (C30.41)

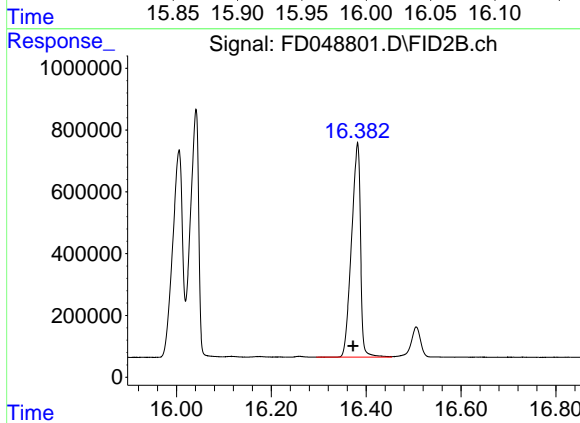
R.T.: 16.005 min  
 Delta R.T.: 0.014 min  
 Response: 9690316  
 Conc: 61.68 ug/ml



#17 Bnezo[k]fluoranthene (C30.14)

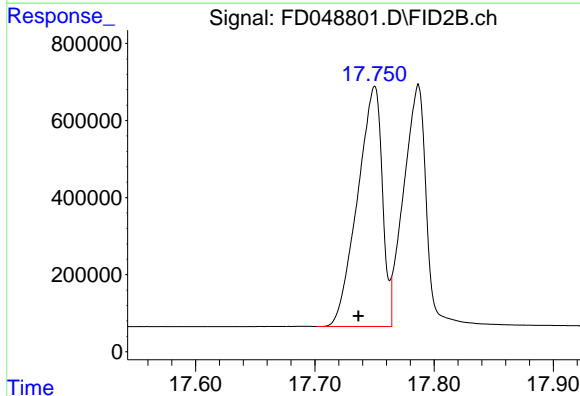
R.T.: 16.005 min  
 Delta R.T.: -0.018 min  
 Response: 9690316  
 Conc: 59.38 ug/ml

Instrument :  
 FID\_D  
 ClientSampleId :



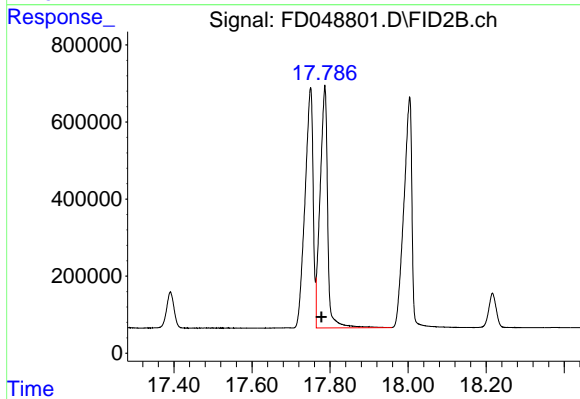
#18 Benzo[a]pyrene (C31.34)

R.T.: 16.381 min  
 Delta R.T.: 0.008 min  
 Response: 9142325  
 Conc: 61.32 ug/ml



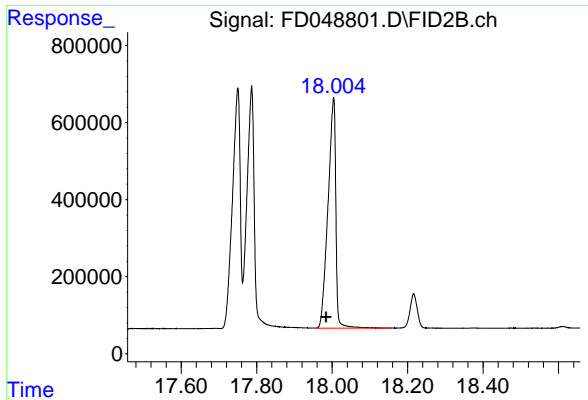
#19 Indeno[1,2,3-cd]pyrene (C35.01)

R.T.: 17.750 min  
 Delta R.T.: 0.013 min  
 Response: 9033775  
 Conc: 73.13 ug/ml



#20 Dibenz[a,h]anthracene (C30.36)

R.T.: 17.786 min  
 Delta R.T.: 0.008 min  
 Response: 8474013  
 Conc: 54.04 ug/ml



#21 Benzo[g,h,i]perylene (C34.01)

R.T.: 18.003 min  
Delta R.T.: 0.019 min  
Response: 8618727  
Conc: 60.40 ug/ml

Instrument :  
FID\_D  
ClientSampleId :