

Data Path : Z:\pestpcbsrv\HPCHEM1\FID\_D\Data\FD112320AL\  
 Data File : FD035621.D  
 Signal(s) : FID2B.CH  
 Acq On : 23 Nov 2020 16:55  
 Operator : DD\AJ  
 Sample : PB133183BL  
 Misc :  
 ALS Vial : 53 Sample Multiplier: 1

Integration File: autoint1.e  
 Quant Time: Nov 24 00:42:18 2020  
 Quant Method : Z:\pestpcbsrv\HPCHEM1\FID\_D\methods\Alaphatic EPH 110220.M  
 Quant Title : GC Extractables  
 QLast Update : Tue Nov 03 11:48:08 2020  
 Response via : Initial Calibration  
 Integrator: ChemStation 6890 Scale Mode: Large solvent peaks clipped

Volume Inj. : 1 ul  
 Signal Phase : Rxi-1ms  
 Signal Info : 20M x 0.18mm x 0.18um

| Compound                       | R.T.   | Response | Conc Units   |
|--------------------------------|--------|----------|--------------|
| -----                          |        |          |              |
| System Monitoring Compounds    |        |          |              |
| 9) S ortho-Terphenyl (SURR)    | 11.526 | 7130295  | 54.812 ug/ml |
| Spiked Amount                  | 50.000 | Recovery | = 109.62%    |
| 12) S 1-chlorooctadecane (S... | 12.956 | 5504820  | 52.820 ug/ml |
| Spiked Amount                  | 50.000 | Recovery | = 105.64%    |

Target Compounds

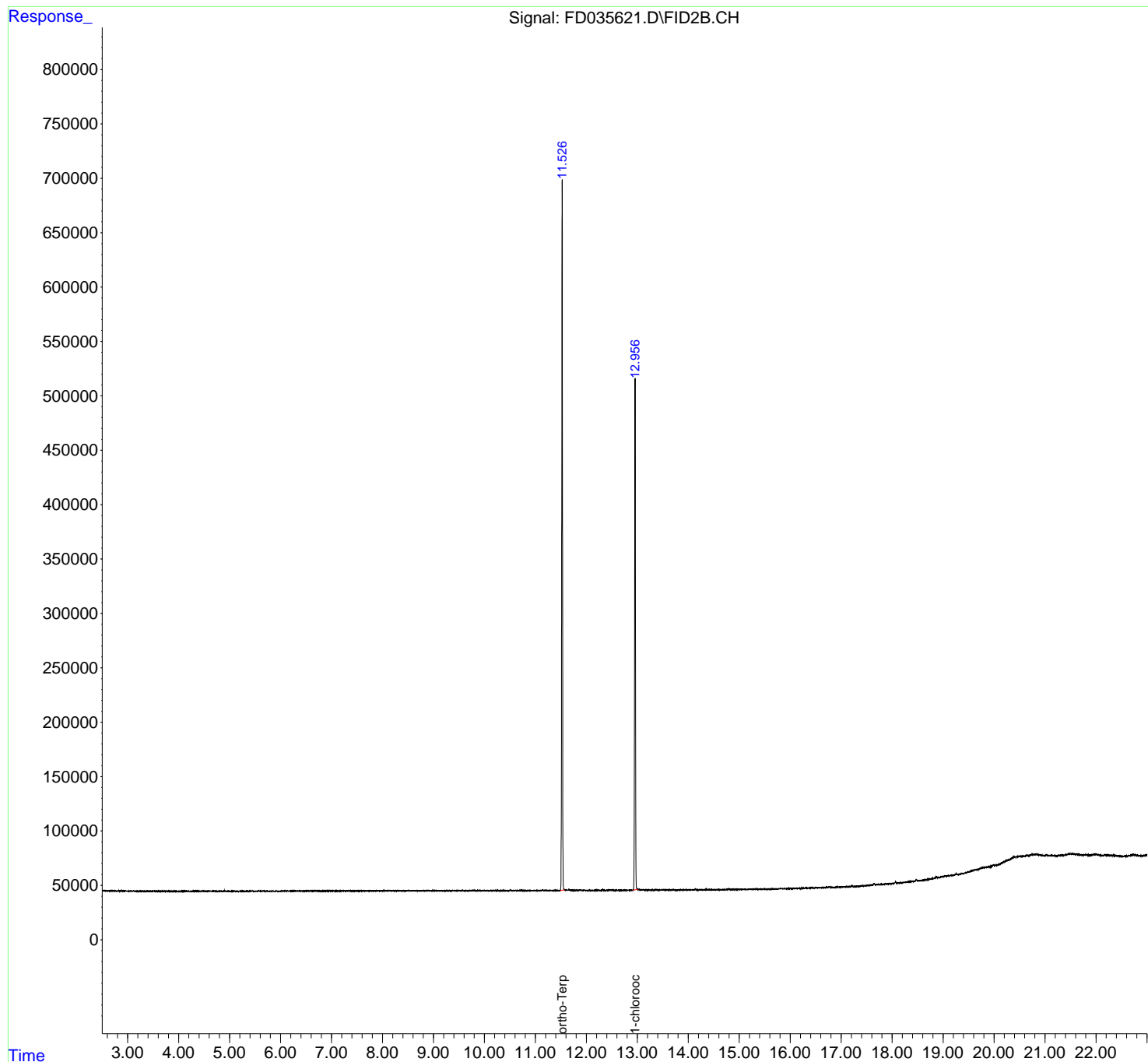
-----

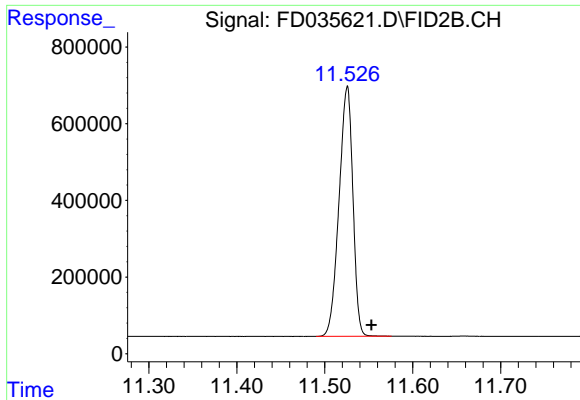
(f)=RT Delta > 1/2 Window (m)=manual int.

Data Path : Z:\pestpcbsrv\HPCHEM1\FID\_D\Data\FD112320AL\  
Data File : FD035621.D  
Signal(s) : FID2B.CH  
Acq On : 23 Nov 2020 16:55  
Operator : DD\AJ  
Sample : PB133183BL  
Misc :  
ALS Vial : 53 Sample Multiplier: 1

Integration File: autoint1.e  
Quant Time: Nov 24 00:42:18 2020  
Quant Method : Z:\pestpcbsrv\HPCHEM1\FID\_D\methods\Alaphatic EPH 110220.M  
Quant Title : GC Extractables  
QLast Update : Tue Nov 03 11:48:08 2020  
Response via : Initial Calibration  
Integrator: ChemStation 6890 Scale Mode: Large solvent peaks clipped

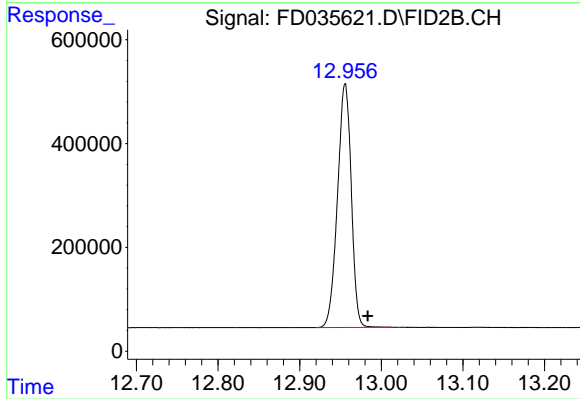
Volume Inj. : 1 ul  
Signal Phase : Rxi-1ms  
Signal Info : 20M x 0.18mm x 0.18um





#9 ortho-Terphenyl (SURR)

R.T.: 11.526 min  
Delta R.T.: -0.027 min  
Response: 7130295  
Conc: 54.81 ug/ml



#12 1-chlorooctadecane (SURR)

R.T.: 12.956 min  
Delta R.T.: -0.027 min  
Response: 5504820  
Conc: 52.82 ug/ml