

Data Path : Z:\pestpcbsrv\HPCHEM1\FID\_D\Data\FD112321AL\  
 Data File : FD039622.D  
 Signal(s) : FID2B.CH  
 Acq On : 23 Nov 2021 23:30  
 Operator : AJ\MA  
 Sample : 20 PPM ALIPHATIC HC STD  
 Misc :  
 ALS Vial : 54 Sample Multiplier: 1

Integration File: autoint1.e  
 Quant Time: Nov 24 02:05:46 2021  
 Quant Method : Z:\pestpcbsrv\HPCHEM1\FID\_D\methods\Aliphatic EPH 112321.M  
 Quant Title : GC Extractables  
 QLast Update : Wed Nov 24 01:36:43 2021  
 Response via : Initial Calibration  
 Integrator: ChemStation 6890 Scale Mode: Large solvent peaks clipped

Volume Inj. : 1 ul  
 Signal Phase : Rxi-1ms  
 Signal Info : 20M x 0.18mm x 0.18um

Compound	R.T.	Response	Conc Units
-----			
System Monitoring Compounds			
9) S ortho-Terphenyl (SURR)	11.657	2566470	20.146 ug/ml
Spiked Amount	50.000	Recovery	= 40.29%
12) S 1-chlorooctadecane (S...	13.084	1975529	20.083 ug/ml
Spiked Amount	50.000	Recovery	= 40.17%
Target Compounds			
1) T n-Nonane (C9)	3.419	2317779	20.287 ug/ml
2) T n-Decane (C10)	4.488	2330915	20.267 ug/ml
3) T A~Naphthalene (C11.7)	6.079	2580905	20.283 ug/ml
4) T n-Dodecane (C12)	6.503	2324264	20.184 ug/ml
5) T A~2-methylnaphthalene...	7.134	2580110	20.262 ug/ml
6) T n-Tetradecane (C14)	8.295	2333773	20.140 ug/ml
7) T n-Hexadecane (C16)	9.893	2336227	20.093 ug/ml
8) T n-Octadecane (C18)	11.332	2383854	20.062 ug/ml
10) T n-Eicosane (C20)	12.639	2360215	20.115 ug/ml
11) T n-Heneicosane (C21)	13.249	2368616	20.136 ug/ml
13) T n-Docosane (C22)	13.834	2338249	20.158 ug/ml
14) T n-Tetracosane (C24)	14.933	2331765	19.982 ug/ml
15) T n-Hexacosane (C26)	15.951	2221599	20.049 ug/ml
16) T n-Octacosane (C28)	16.898	2130908	19.864 ug/ml
17) T n-Tricontane (C30)	17.781	2073009	19.447 ug/ml
18) T n-Dotriacontane (C32)	18.611	1986033	19.069 ug/ml
19) T n-Tetratriacontane (C34)	19.391	1940257	19.307 ug/ml
20) T n-Hexatriacontane (C36)	20.129	1888593	19.627 ug/ml
21) T n-Octatriacontane (C38)	20.866	1861036	19.830 ug/ml
22) T n-Tetracontane (C40)	21.784	1885476	19.557 ug/ml
-----			

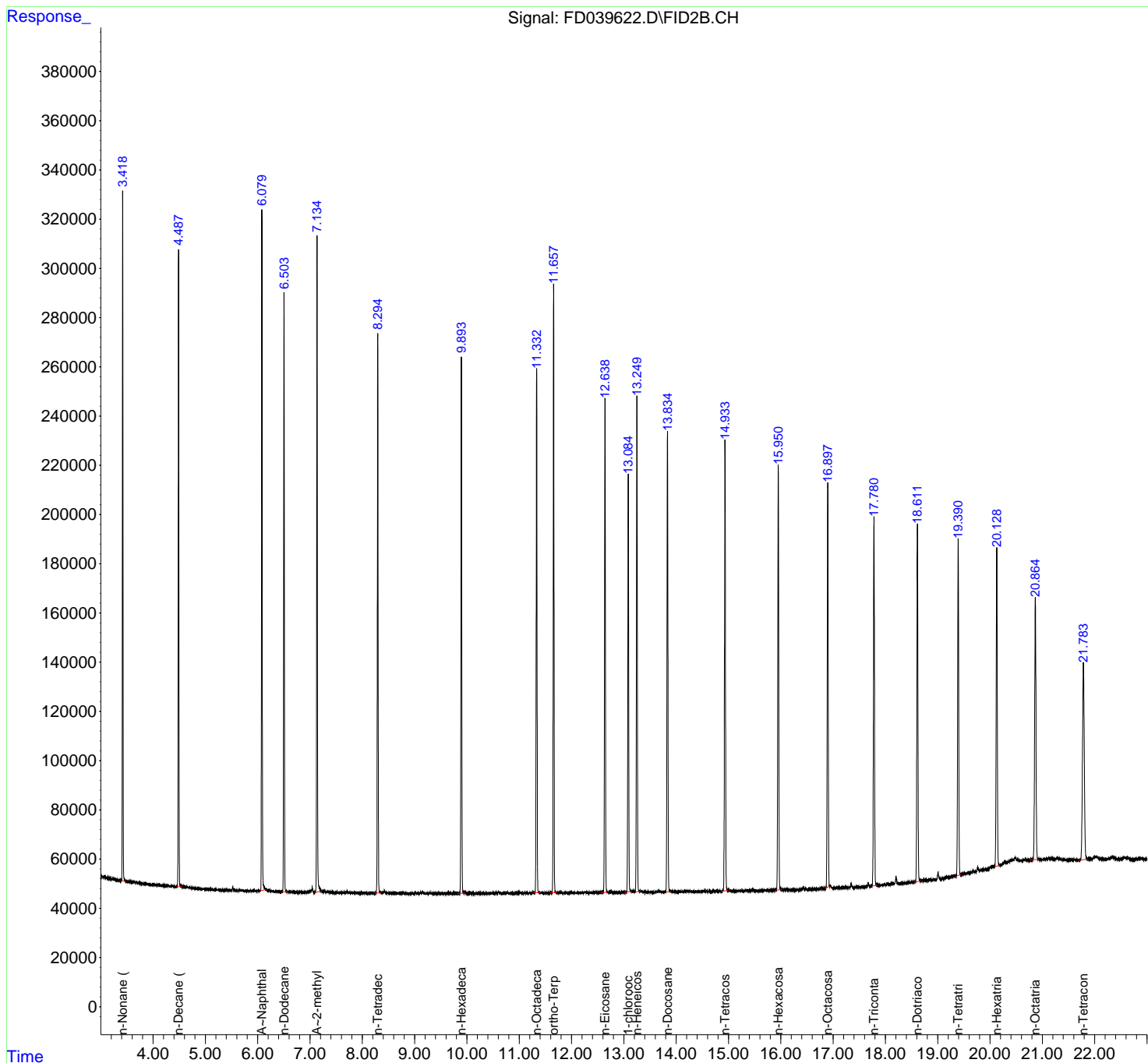
(f)=RT Delta > 1/2 Window

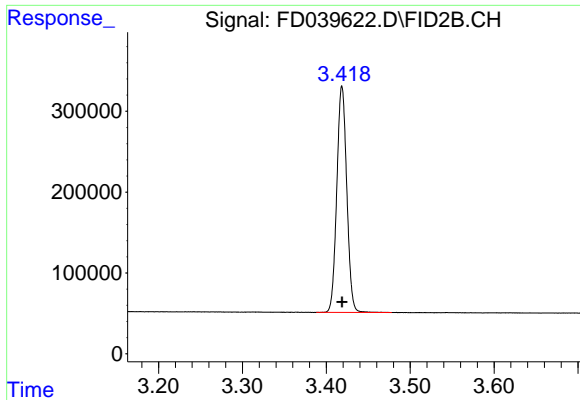
(m)=manual int.

Data Path : Z:\pestpcbsrv\HPCHEM1\FID\_D\Data\FD112321AL\  
 Data File : FD039622.D  
 Signal(s) : FID2B.CH  
 Acq On : 23 Nov 2021 23:30  
 Operator : AJ\MA  
 Sample : 20 PPM ALIPHATIC HC STD  
 Misc :  
 ALS Vial : 54 Sample Multiplier: 1

Integration File: autoint1.e  
 Quant Time: Nov 24 02:05:46 2021  
 Quant Method : Z:\pestpcbsrv\HPCHEM1\FID\_D\methods\Aliphatic EPH 112321.M  
 Quant Title : GC Extractables  
 QLast Update : Wed Nov 24 01:36:43 2021  
 Response via : Initial Calibration  
 Integrator: ChemStation 6890 Scale Mode: Large solvent peaks clipped

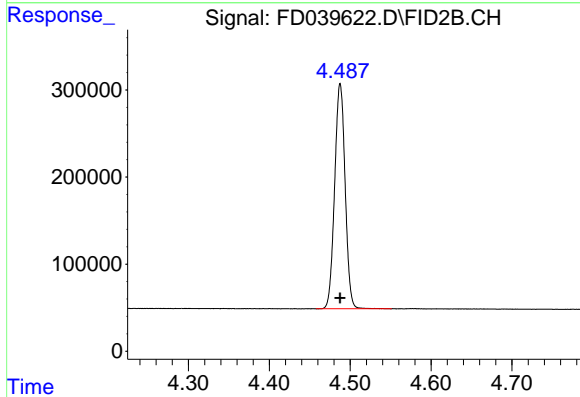
Volume Inj. : 1 ul  
 Signal Phase : Rxi-1ms  
 Signal Info : 20M x 0.18mm x 0.18um





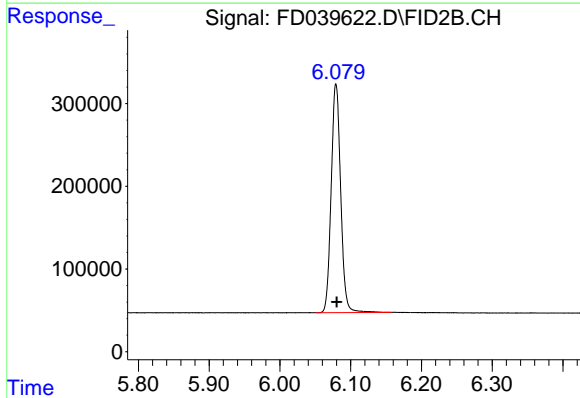
#1 n-Nonane (C9)

R.T.: 3.419 min  
Delta R.T.: 0.000 min  
Response: 2317779  
Conc: 20.29 ug/ml



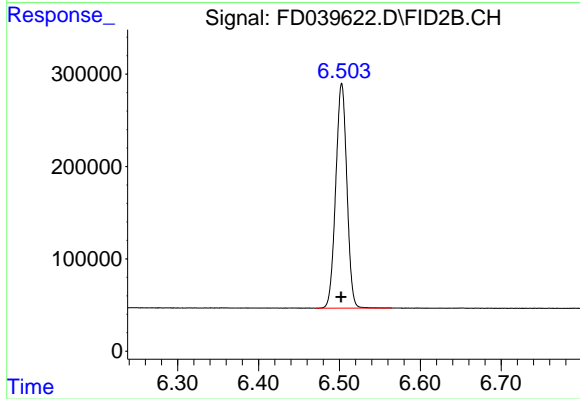
#2 n-Decane (C10)

R.T.: 4.488 min  
Delta R.T.: 0.000 min  
Response: 2330915  
Conc: 20.27 ug/ml



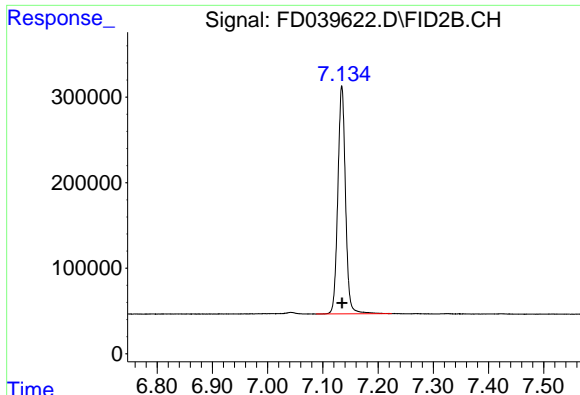
#3 A~Naphthalene (C11.7)

R.T.: 6.079 min  
Delta R.T.: 0.000 min  
Response: 2580905  
Conc: 20.28 ug/ml



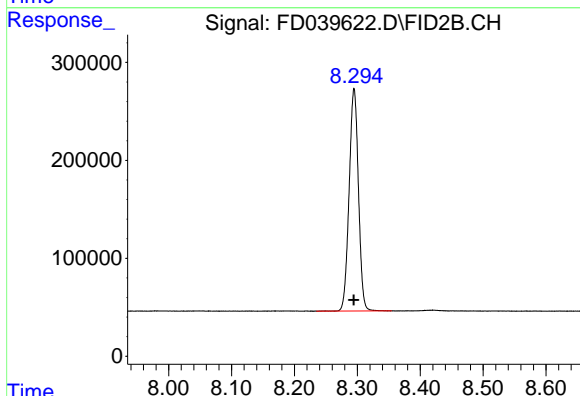
#4 n-Dodecane (C12)

R.T.: 6.503 min  
Delta R.T.: 0.000 min  
Response: 2324264  
Conc: 20.18 ug/ml



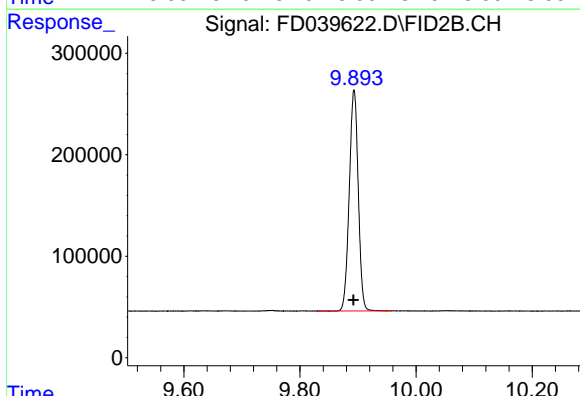
#5 A~2-methylnaphthalene (C12.89)

R.T.: 7.134 min  
Delta R.T.: 0.000 min  
Response: 2580110  
Conc: 20.26 ug/ml



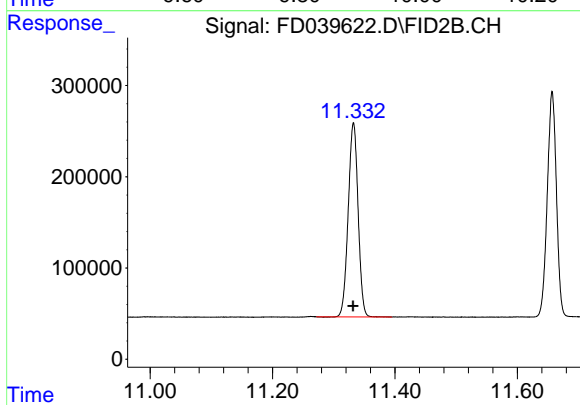
#6 n-Tetradecane (C14)

R.T.: 8.295 min  
Delta R.T.: 0.000 min  
Response: 2333773  
Conc: 20.14 ug/ml



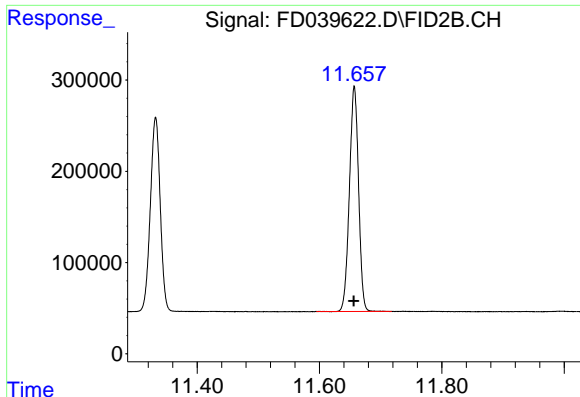
#7 n-Hexadecane (C16)

R.T.: 9.893 min  
Delta R.T.: 0.001 min  
Response: 2336227  
Conc: 20.09 ug/ml



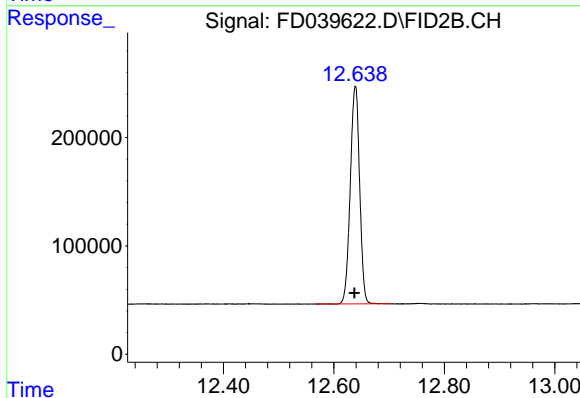
#8 n-Octadecane (C18)

R.T.: 11.332 min  
Delta R.T.: 0.000 min  
Response: 2383854  
Conc: 20.06 ug/ml



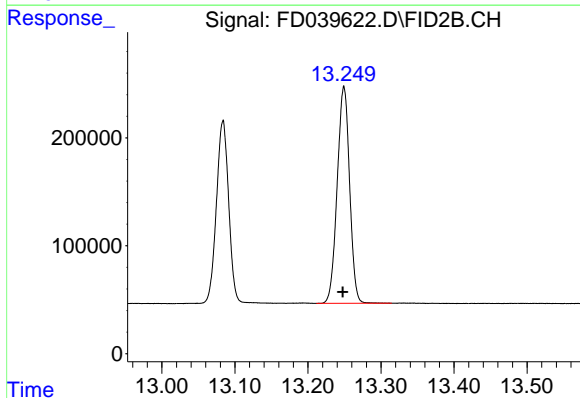
#9 ortho-Terphenyl (SURR)

R.T.: 11.657 min  
 Delta R.T.: 0.000 min  
 Response: 2566470  
 Conc: 20.15 ug/ml



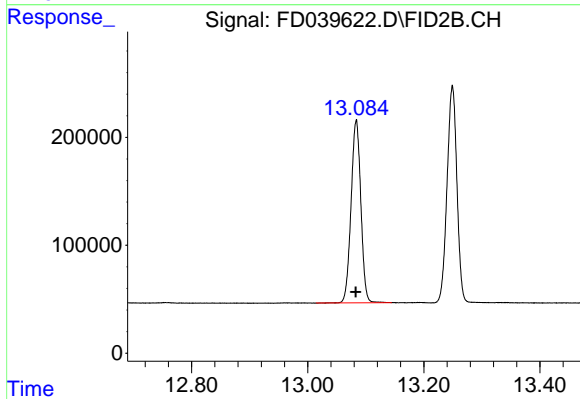
#10 n-Eicosane (C20)

R.T.: 12.639 min  
 Delta R.T.: 0.001 min  
 Response: 2360215  
 Conc: 20.12 ug/ml



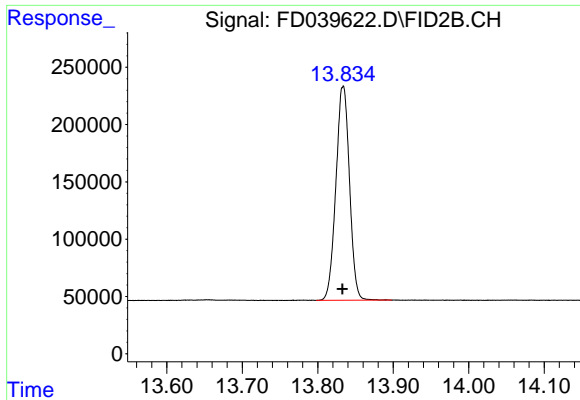
#11 n-Heneicosane (C21)

R.T.: 13.249 min  
 Delta R.T.: 0.001 min  
 Response: 2368616  
 Conc: 20.14 ug/ml



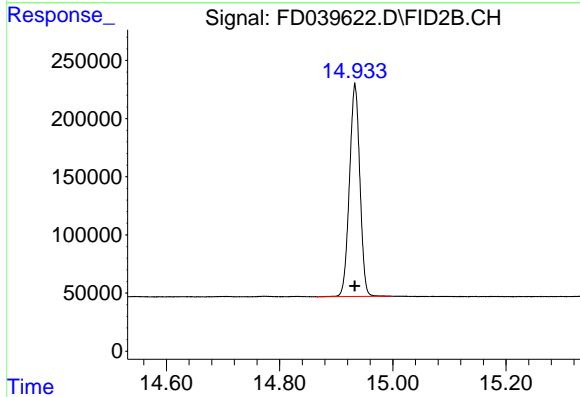
#12 1-chlorooctadecane (SURR)

R.T.: 13.084 min  
 Delta R.T.: 0.000 min  
 Response: 1975529  
 Conc: 20.08 ug/ml



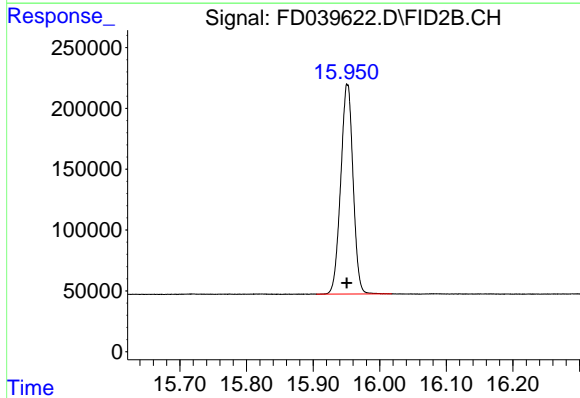
#13 n-Docosane (C22)

R.T.: 13.834 min  
Delta R.T.: 0.001 min  
Response: 2338249  
Conc: 20.16 ug/ml



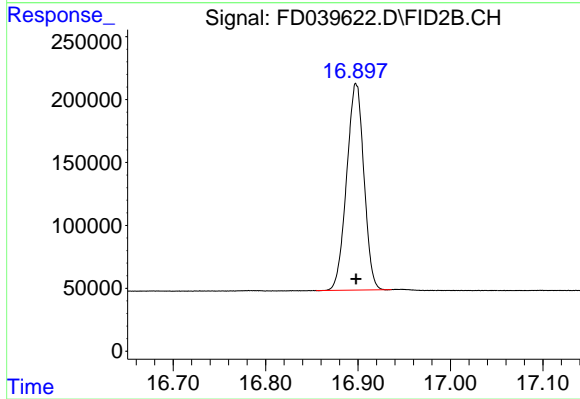
#14 n-Tetracosane (C24)

R.T.: 14.933 min  
Delta R.T.: 0.000 min  
Response: 2331765  
Conc: 19.98 ug/ml



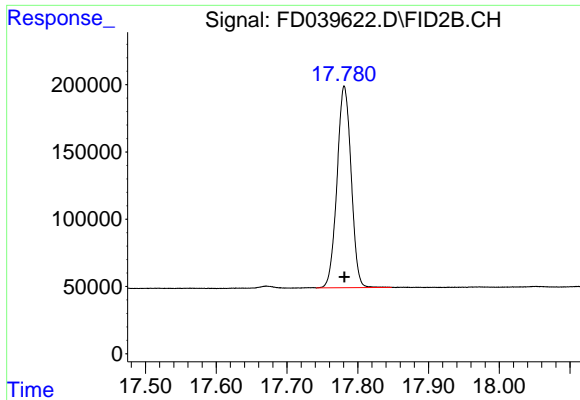
#15 n-Hexacosane (C26)

R.T.: 15.951 min  
Delta R.T.: 0.000 min  
Response: 2221599  
Conc: 20.05 ug/ml



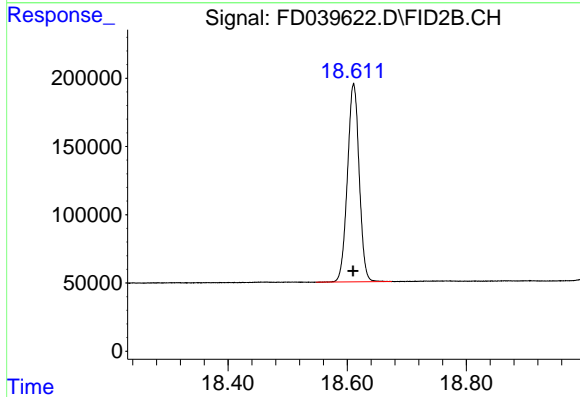
#16 n-Octacosane (C28)

R.T.: 16.898 min  
Delta R.T.: 0.000 min  
Response: 2130908  
Conc: 19.86 ug/ml



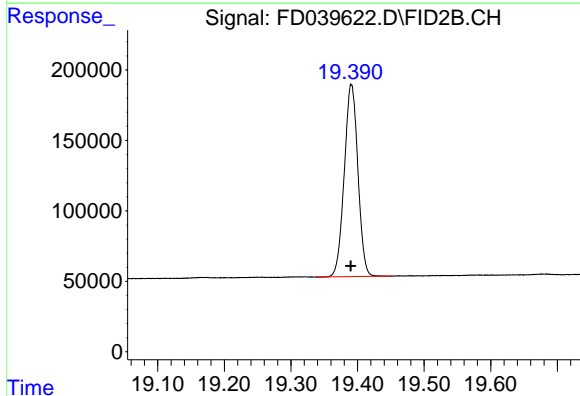
#17 n-Tricontane (C30)

R.T.: 17.781 min  
Delta R.T.: 0.000 min  
Response: 2073009  
Conc: 19.45 ug/ml



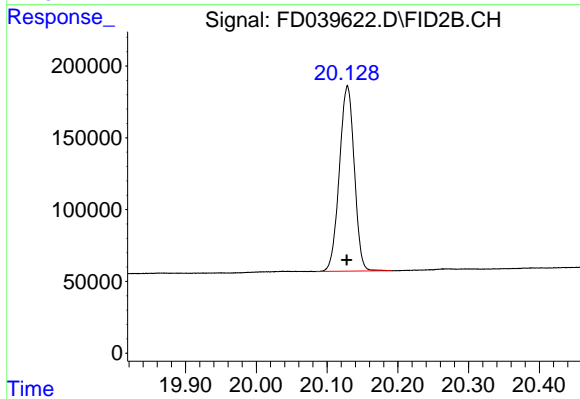
#18 n-Dotriacontane (C32)

R.T.: 18.611 min  
Delta R.T.: 0.000 min  
Response: 1986033  
Conc: 19.07 ug/ml



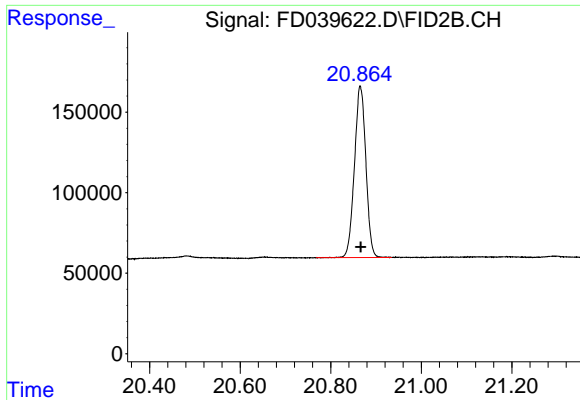
#19 n-Tetratriacontane (C34)

R.T.: 19.391 min  
Delta R.T.: 0.000 min  
Response: 1940257  
Conc: 19.31 ug/ml



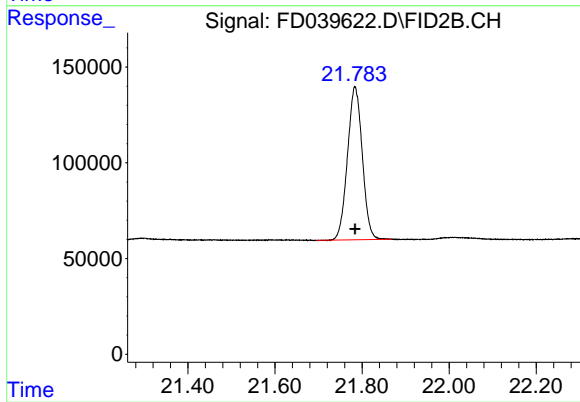
#20 n-Hexatriacontane (C36)

R.T.: 20.129 min  
Delta R.T.: 0.000 min  
Response: 1888593  
Conc: 19.63 ug/ml



#21 n-Octatriacontane (C38)

R.T.: 20.866 min  
Delta R.T.: 0.000 min  
Response: 1861036  
Conc: 19.83 ug/ml



#22 n-Tetracontane (C40)

R.T.: 21.784 min  
Delta R.T.: 0.000 min  
Response: 1885476  
Conc: 19.56 ug/ml