

Data Path : Z:\pestpcbsrv\HPCHEM1\FID_D\Data\FD112420AL\
 Data File : FD035662.D
 Signal(s) : FID2B.CH
 Acq On : 25 Nov 2020 3:22
 Operator : DD\AJ
 Sample : L4875-01DL 5X
 Misc :
 ALS Vial : 74 Sample Multiplier: 1

Integration File: autoint1.e
 Quant Time: Nov 25 06:16:14 2020
 Quant Method : Z:\pestpcbsrv\HPCHEM1\FID_D\methods\Alaphatic EPH 110220.M
 Quant Title : GC Extractables
 QLast Update : Tue Nov 03 11:48:08 2020
 Response via : Initial Calibration
 Integrator: ChemStation 6890 Scale Mode: Large solvent peaks clipped

Volume Inj. : 1 ul
 Signal Phase : Rxi-1ms
 Signal Info : 20M x 0.18mm x 0.18um

Compound	R.T.	Response	Conc Units

System Monitoring Compounds			
9) S ortho-Terphenyl (SURR)	11.534	721314	5.545 ug/ml
Spiked Amount	50.000	Recovery	= 11.09%
12) S 1-chlorooctadecane (S...	12.966	575527	5.522 ug/ml
Spiked Amount	50.000	Recovery	= 11.04%

Target Compounds

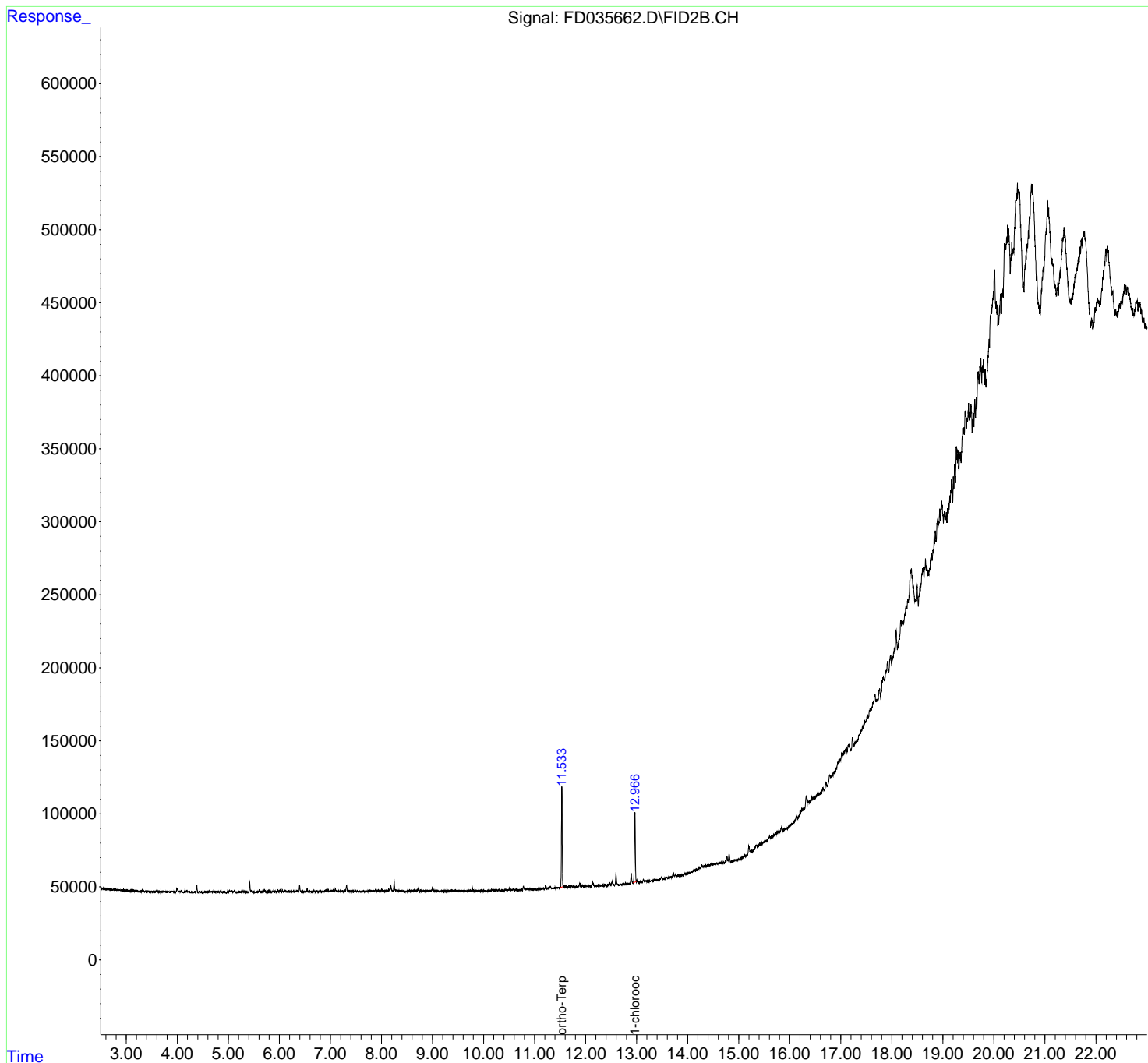
(f)=RT Delta > 1/2 Window

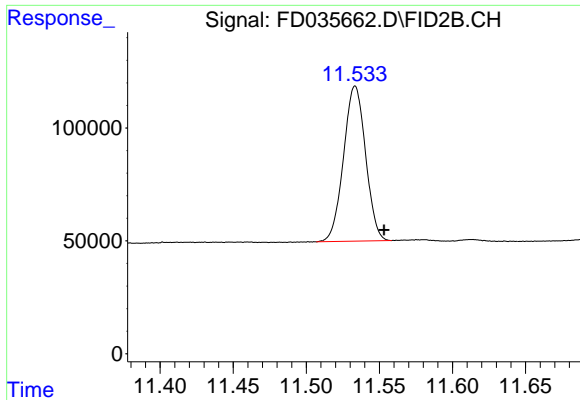
(m)=manual int.

Data Path : Z:\pestpcbsrv\HPCHEM1\FID_D\Data\FD112420AL\
 Data File : FD035662.D
 Signal(s) : FID2B.CH
 Acq On : 25 Nov 2020 3:22
 Operator : DD\AJ
 Sample : L4875-01DL 5X
 Misc :
 ALS Vial : 74 Sample Multiplier: 1

Integration File: autoint1.e
 Quant Time: Nov 25 06:16:14 2020
 Quant Method : Z:\pestpcbsrv\HPCHEM1\FID_D\methods\Alaphatic EPH 110220.M
 Quant Title : GC Extractables
 QLast Update : Tue Nov 03 11:48:08 2020
 Response via : Initial Calibration
 Integrator: ChemStation 6890 Scale Mode: Large solvent peaks clipped

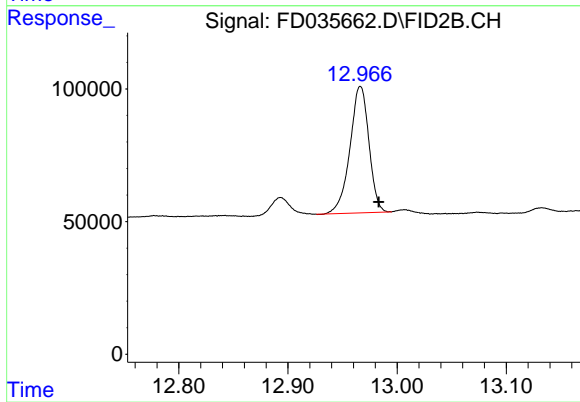
Volume Inj. : 1 ul
 Signal Phase : Rxi-1ms
 Signal Info : 20M x 0.18mm x 0.18um





#9 ortho-Terphenyl (SURR)

R.T.: 11.534 min
Delta R.T.: -0.020 min
Response: 721314
Conc: 5.54 ug/ml



#12 1-chlorooctadecane (SURR)

R.T.: 12.966 min
Delta R.T.: -0.017 min
Response: 575527
Conc: 5.52 ug/ml