

Data Path : Z:\pestpcbsrv\HPCHEM1\FID_D\Data\FD112423AR\
 Data File : FD046970.D
 Signal(s) : FID2B.ch
 Acq On : 24 Nov 2023 13:30
 Operator : YP/AJ
 Sample : 20 PPM AROMATIC HC STD ICV
 Misc :
 ALS Vial : 66 Sample Multiplier: 1

Integration File: autoint1.e
 Quant Time: Nov 24 14:01:47 2023
 Quant Method : Z:\pestpcbsrv\HPCHEM1\FID_D\methods\Aromatic EPH 112423.M
 Quant Title : GC Extractables
 QLast Update : Fri Nov 24 13:30:33 2023
 Response via : Initial Calibration
 Integrator: ChemStation

Volume Inj. : 1 µl
 Signal Phase : Rxi-1ms
 Signal Info : 20M x 0.18mm x 0.18µm

Compound	R.T.	Response	Conc Units

System Monitoring Compounds			
4) S 2-Bromonaphthalene (S...	7.476	3610269	20.868 ug/ml
Spiked Amount 50.000		Recovery =	41.74%
6) S 2-Fluorobiphenyl (SURR)	8.330	2287370	21.035 ug/ml
Spiked Amount 50.000 Range 0 - 131		Recovery =	42.07%
11) S ortho-Terphenyl (SURR)	11.366	4157804	20.894 ug/ml
Spiked Amount 50.000		Recovery =	41.79%
Target Compounds			
1) T 1,2,3-Trimethylbenzen...	4.291	3857508	20.732 ug/ml
2) T Naphthalene (C11.7)	5.817	3972811	20.862 ug/ml
3) T 2-Methylnaphthalene (...)	6.865	3976552	20.650 ug/ml
5) T Acenaphthylene (C15.06)	8.133	3615113	20.768 ug/ml
7) T Acenaphthene (C15.5)	8.429	3862126	20.825 ug/ml
8) T Flouorene (C16.55)	9.207	3621502	20.980 ug/ml
9) T Phenanthrene (C19.36)	10.595	3432143	20.904 ug/ml
10) T Anthracene (C19.43)	10.669	3217569	20.807 ug/ml
12) T Fluoranthene (C21.85)	12.397	3305927	20.858 ug/ml
13) T Pyrene (C20.8)	12.691	3214164	21.007 ug/ml
14) T Benzo[a]anthracene (C...	14.554	2667207	20.570 ug/ml
15) T Chrysene (C27.41)	14.596	2910407	20.305 ug/ml
16) T benzo[b]fluoranthene ...	16.095	2763113	20.687 ug/ml
17) T Bnezo[k]fluoranthene ...	16.127	2784337	20.380 ug/ml
18) T Benzo[a]pyrene (C31.34)	16.470	2685526	20.499 ug/ml
19) T Indeno[1,2,3-cd]pyren...	17.826	2407476	20.176 ug/ml
20) T Dibenz[a,h]anthracene...	17.868	2591332	19.943 ug/ml
21) T Benzo[g,h,i]perylene ...	18.079	2688410	20.547 ug/ml

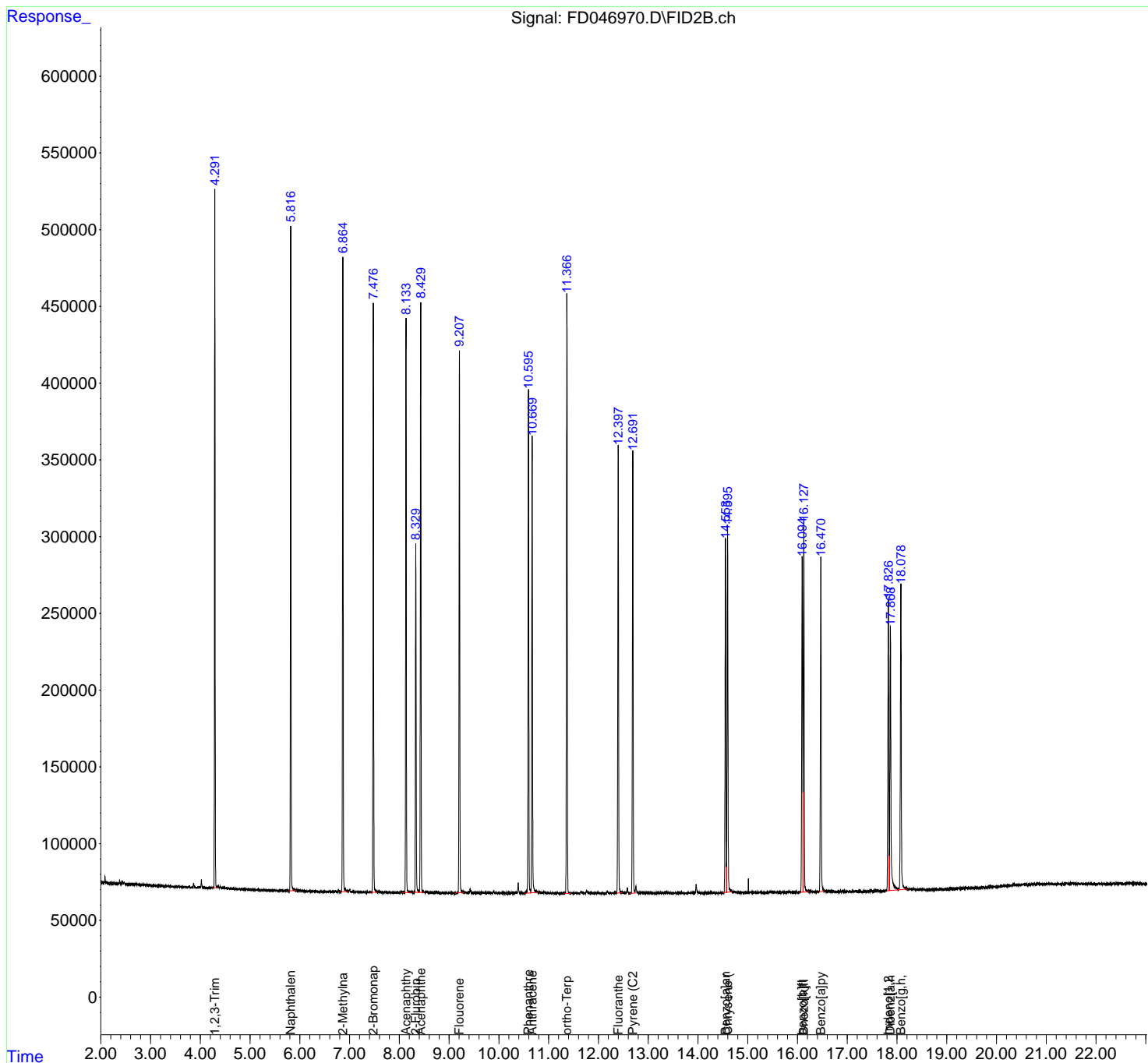
(f)=RT Delta > 1/2 Window

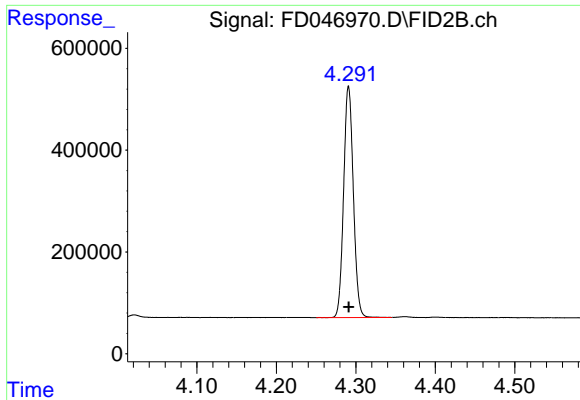
(m)=manual int.

Data Path : Z:\pestpcbsrv\HPCHEM1\FID_D\Data\FD112423AR\
 Data File : FD046970.D
 Signal(s) : FID2B.ch
 Acq On : 24 Nov 2023 13:30
 Operator : YP/AJ
 Sample : 20 PPM AROMATIC HC STD ICV
 Misc :
 ALS Vial : 66 Sample Multiplier: 1

Integration File: autoint1.e
 Quant Time: Nov 24 14:01:47 2023
 Quant Method : Z:\pestpcbsrv\HPCHEM1\FID_D\methods\Aromatic EPH 112423.M
 Quant Title : GC Extractables
 QLast Update : Fri Nov 24 13:30:33 2023
 Response via : Initial Calibration
 Integrator: ChemStation

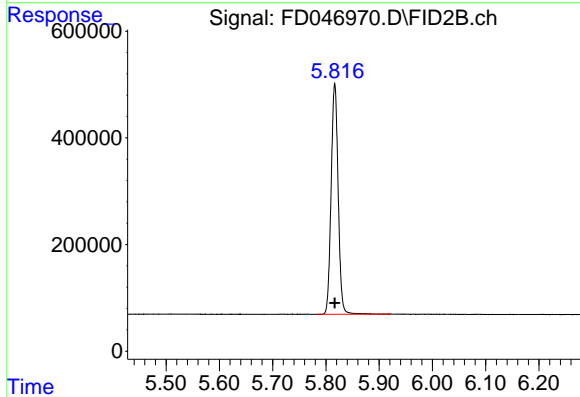
Volume Inj. : 1 µl
 Signal Phase : Rxi-1ms
 Signal Info : 20M x 0.18mm x 0.18µm





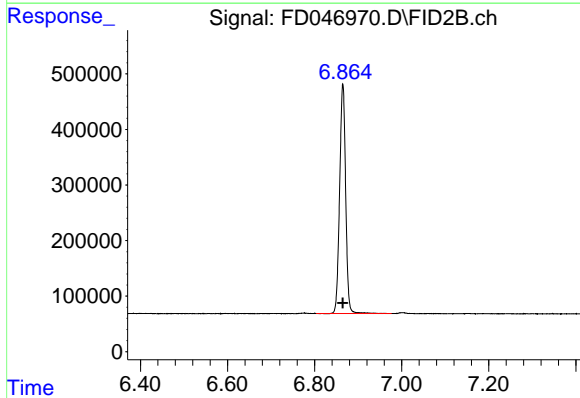
#1 1,2,3-Trimethylbenzene (C10.1)

R.T.: 4.291 min
Delta R.T.: 0.000 min
Response: 3857508
Conc: 20.73 ug/ml



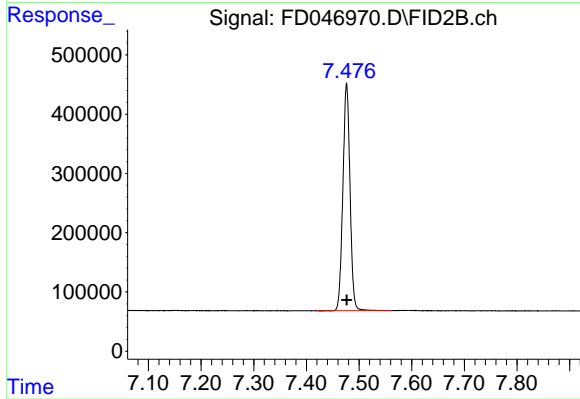
#2 Naphthalene (C11.7)

R.T.: 5.817 min
Delta R.T.: 0.000 min
Response: 3972811
Conc: 20.86 ug/ml



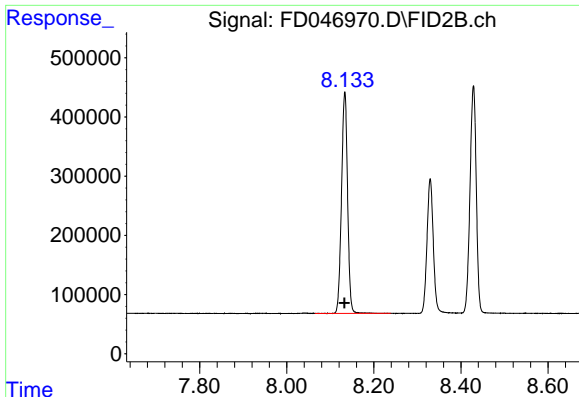
#3 2-Methylnaphthalene (C12.89)

R.T.: 6.865 min
Delta R.T.: 0.000 min
Response: 3976552
Conc: 20.65 ug/ml



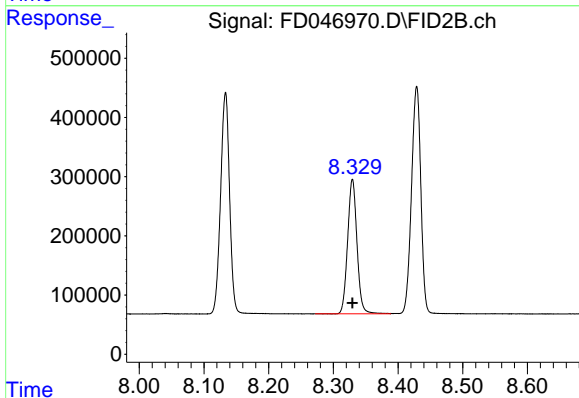
#4 2-Bromonaphthalene (SURR)

R.T.: 7.476 min
Delta R.T.: 0.000 min
Response: 3610269
Conc: 20.87 ug/ml



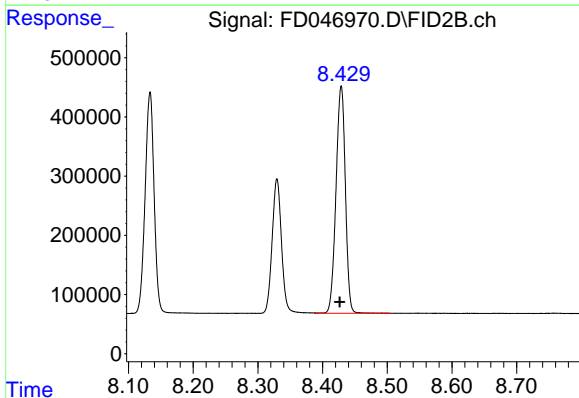
#5 Acenaphthylene (C15.06)

R.T.: 8.133 min
Delta R.T.: 0.000 min
Response: 3615113
Conc: 20.77 ug/ml



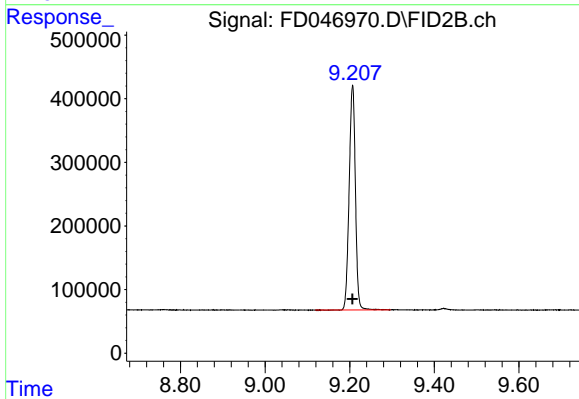
#6 2-Fluorobiphenyl (SURR)

R.T.: 8.330 min
Delta R.T.: 0.000 min
Response: 2287370
Conc: 21.03 ug/ml



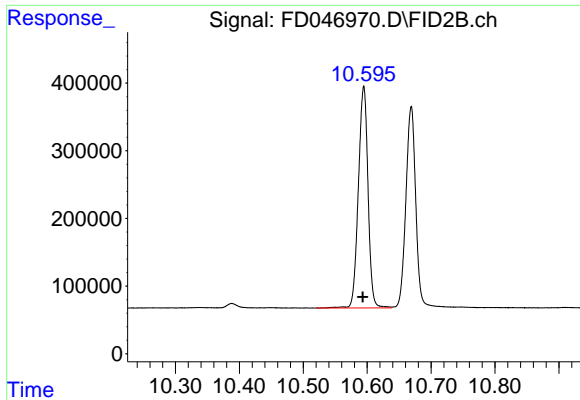
#7 Acenaphthene (C15.5)

R.T.: 8.429 min
Delta R.T.: 0.002 min
Response: 3862126
Conc: 20.83 ug/ml

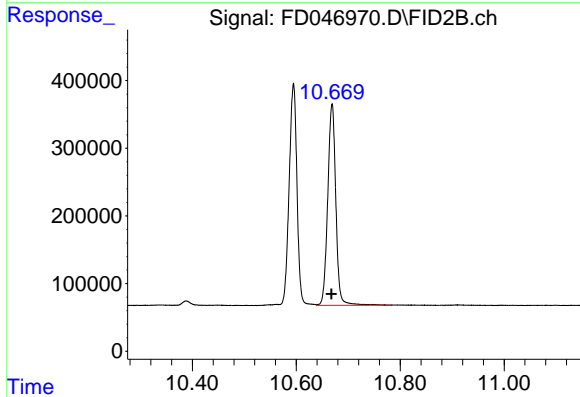


#8 Fluorene (C16.55)

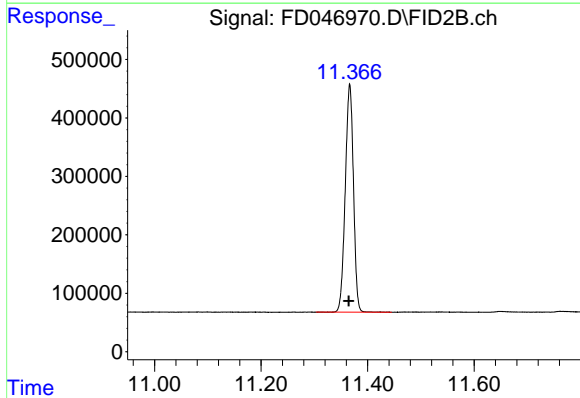
R.T.: 9.207 min
Delta R.T.: 0.000 min
Response: 3621502
Conc: 20.98 ug/ml



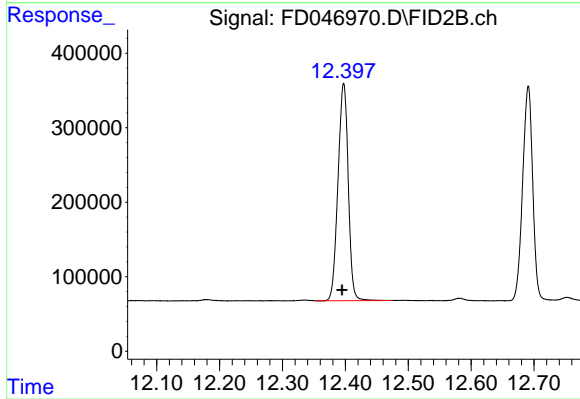
#9 Phenanthrene (C19.36)
R.T.: 10.595 min
Delta R.T.: 0.001 min
Response: 3432143
Conc: 20.90 ug/ml



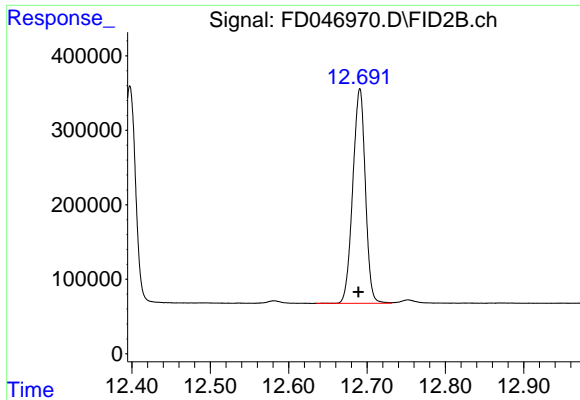
#10 Anthracene (C19.43)
R.T.: 10.669 min
Delta R.T.: 0.000 min
Response: 3217569
Conc: 20.81 ug/ml



#11 ortho-Terphenyl (SURR)
R.T.: 11.366 min
Delta R.T.: 0.002 min
Response: 4157804
Conc: 20.89 ug/ml

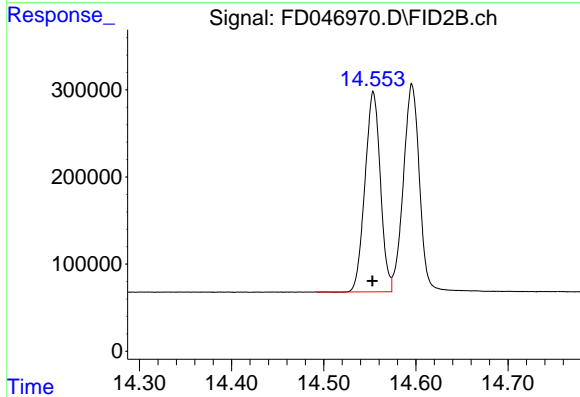


#12 Fluoranthene (C21.85)
R.T.: 12.397 min
Delta R.T.: 0.002 min
Response: 3305927
Conc: 20.86 ug/ml



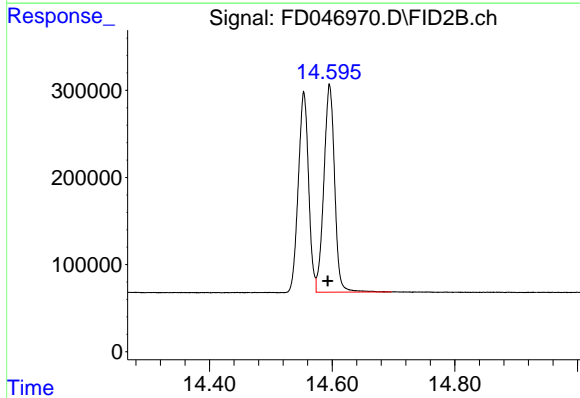
#13 Pyrene (C20.8)

R.T.: 12.691 min
Delta R.T.: 0.001 min
Response: 3214164
Conc: 21.01 ug/ml



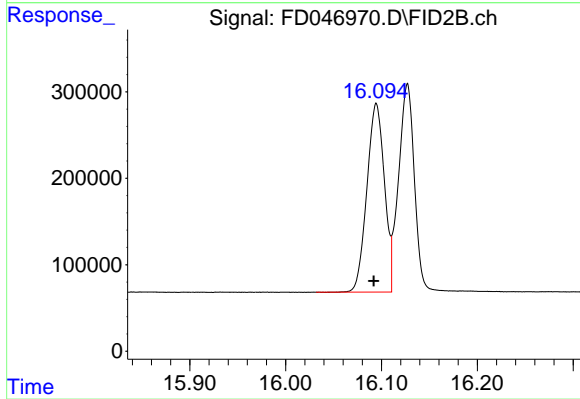
#14 Benzo[a]anthracene (C26.37)

R.T.: 14.554 min
Delta R.T.: 0.001 min
Response: 2667207
Conc: 20.57 ug/ml



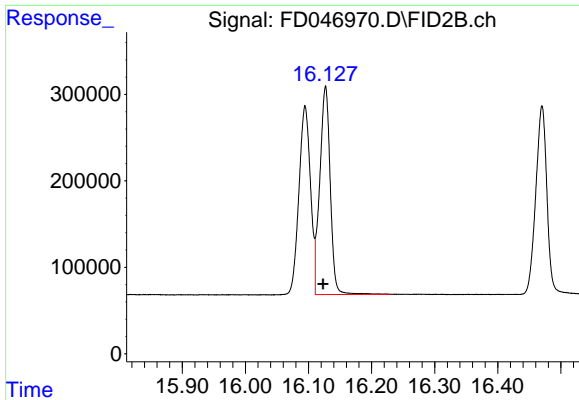
#15 Chrysene (C27.41)

R.T.: 14.596 min
Delta R.T.: 0.003 min
Response: 2910407
Conc: 20.31 ug/ml



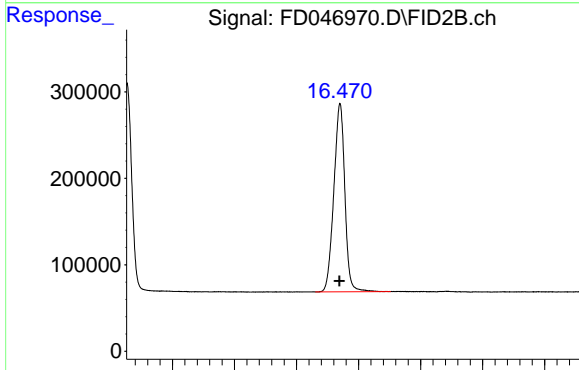
#16 benzo[b]fluoranthene (C30.41)

R.T.: 16.095 min
Delta R.T.: 0.003 min
Response: 2763113
Conc: 20.69 ug/ml



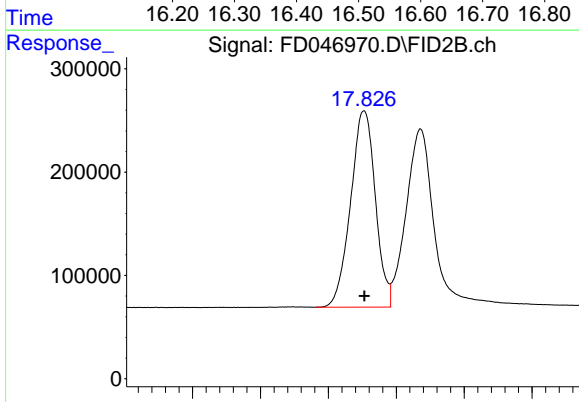
#17 Bnezo[k]fluoranthene (C30.14)

R.T.: 16.127 min
Delta R.T.: 0.004 min
Response: 2784337
Conc: 20.38 ug/ml



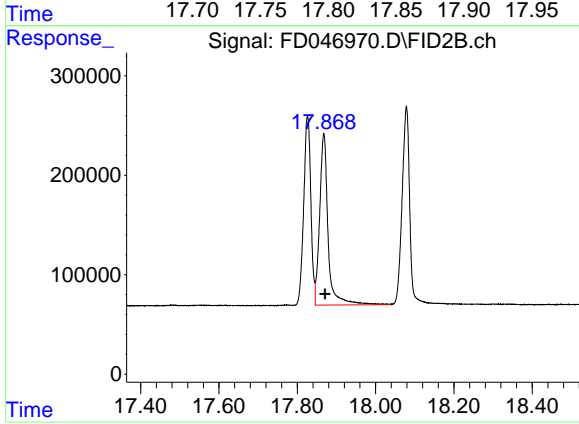
#18 Benzo[a]pyrene (C31.34)

R.T.: 16.470 min
Delta R.T.: 0.001 min
Response: 2685526
Conc: 20.50 ug/ml



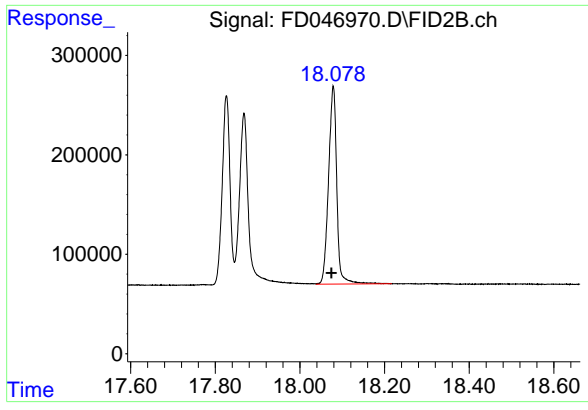
#19 Indeno[1,2,3-cd]pyrene (C35.01)

R.T.: 17.826 min
Delta R.T.: 0.000 min
Response: 2407476
Conc: 20.18 ug/ml



#20 Dibenz[a,h]anthracene (C30.36)

R.T.: 17.868 min
Delta R.T.: -0.003 min
Response: 2591332
Conc: 19.94 ug/ml



#21 Benzo[g,h,i]perylene (C34.01)

R.T.: 18.079 min
Delta R.T.: 0.004 min
Response: 2688410
Conc: 20.55 ug/ml