

Data Path : Z:\pestpcbsrv\HPCHEM1\FID_D\Data\FD112524AR\
 Data File : FD048810.D
 Signal(s) : FID2B.ch
 Acq On : 25 Nov 2024 08:50
 Operator : YP/AJ
 Sample : MECL2
 Misc :
 ALS Vial : 51 Sample Multiplier: 1

Instrument :
 FID_D
 ClientSampleId :

Integration File: autoint1.e
 Quant Time: Nov 26 00:56:33 2024
 Quant Method : Z:\pestpcbsrv\HPCHEM1\FID_D\methods\Aromatic EPH 111424.M
 Quant Title : GC Extractables
 QLast Update : Thu Nov 14 14:16:25 2024
 Response via : Initial Calibration
 Integrator: ChemStation

Volume Inj. : 1 µl
 Signal Phase : Rxi-1ms
 Signal Info : 20M x 0.18mm x 0.18µm

Compound	R.T.	Response	Conc Units

System Monitoring Compounds			
Target Compounds			

(f)=RT Delta > 1/2 Window

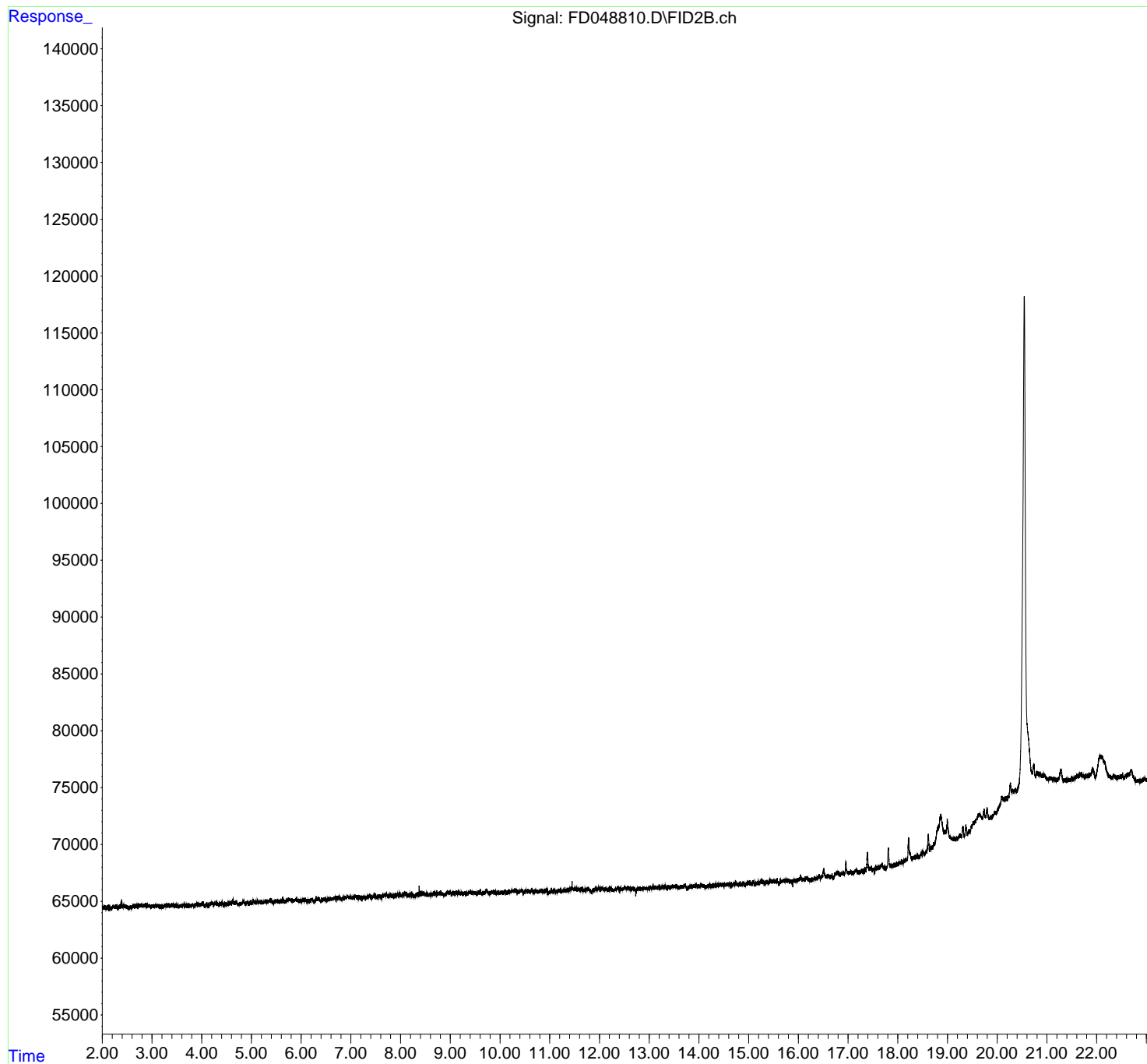
(m)=manual int.

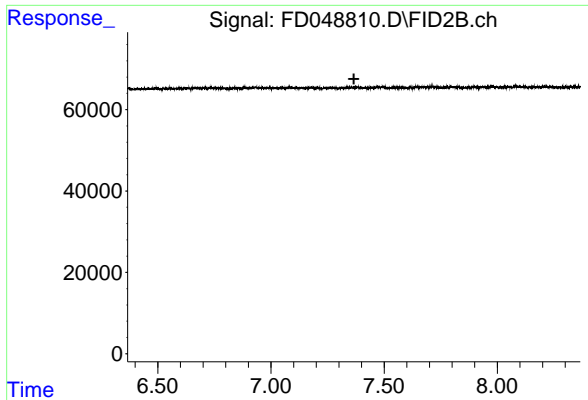
Data Path : Z:\pestpcbsrv\HPCHEM1\FID_D\Data\FD112524AR\
Data File : FD048810.D
Signal(s) : FID2B.ch
Acq On : 25 Nov 2024 08:50
Operator : YP/AJ
Sample : MECL2
Misc :
ALS Vial : 51 Sample Multiplier: 1

Instrument :
FID_D
ClientSampleId :

Integration File: autoint1.e
Quant Time: Nov 26 00:56:33 2024
Quant Method : Z:\pestpcbsrv\HPCHEM1\FID_D\methods\Aromatic EPH 111424.M
Quant Title : GC Extractables
QLast Update : Thu Nov 14 14:16:25 2024
Response via : Initial Calibration
Integrator: ChemStation

Volume Inj. : 1 μ l
Signal Phase : Rxi-1ms
Signal Info : 20M x 0.18mm x 0.18 μ m

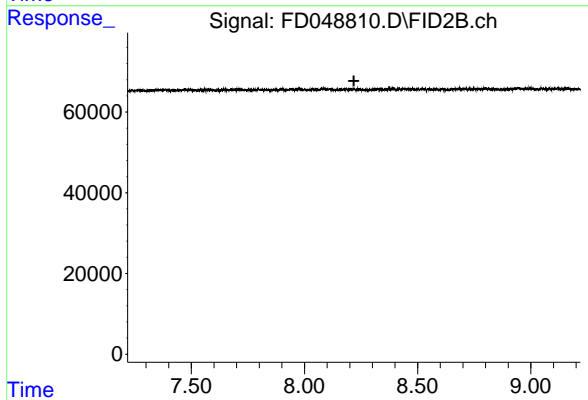




#4 2-Bromonaphthalene (SURRE)

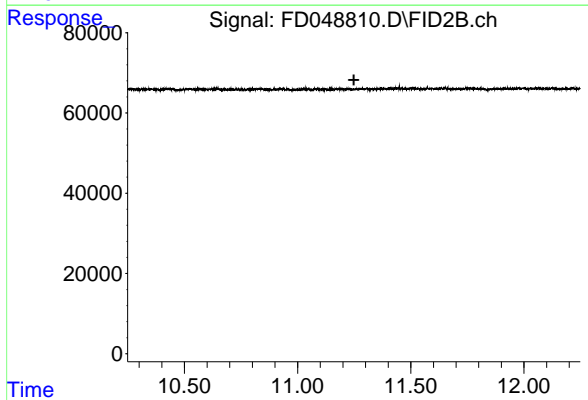
R.T.: 0.000 min
Exp R.T. : 7.366 min
Response: 0
Conc: N.D.

Instrument :
FID_D
ClientSampleId :



#6 2-Fluorobiphenyl (SURRE)

R.T.: 0.000 min
Exp R.T. : 8.218 min
Response: 0
Conc: N.D.



#11 ortho-Terphenyl (SURRE)

R.T.: 0.000 min
Exp R.T. : 11.249 min
Response: 0
Conc: N.D.