

Data Path : Z:\pestpcbsrv\HPCHEM1\FID\_D\Data\FD112724AR\  
 Data File : FD048825.D  
 Signal(s) : FID2B.ch  
 Acq On : 27 Nov 2024 10:02  
 Operator : YP/AJ  
 Sample : P5002-01  
 Misc :  
 ALS Vial : 64 Sample Multiplier: 1

Instrument :  
 FID\_D  
 ClientSampleId :

Integration File: autoint1.e  
 Quant Time: Nov 28 02:39:13 2024  
 Quant Method : Z:\pestpcbsrv\HPCHEM1\FID\_D\methods\Aromatic EPH 111424.M  
 Quant Title : GC Extractables  
 QLast Update : Thu Nov 14 14:16:25 2024  
 Response via : Initial Calibration  
 Integrator: ChemStation

Volume Inj. : 1 µl  
 Signal Phase : Rxi-1ms  
 Signal Info : 20M x 0.18mm x 0.18µm

Compound	R.T.	Response	Conc Units
-----			
System Monitoring Compounds			
4) S 2-Bromonaphthalene (S... Spiked Amount 50.000	7.369	12406185 Recovery = 140.93%	70.466 ug/ml
6) S 2-Fluorobiphenyl (SURR) Spiked Amount 50.000 Range 0 - 131	8.224	7467975 Recovery = 129.69%	64.843 ug/ml
11) S ortho-Terphenyl (SURR) Spiked Amount 50.000	11.267	13346930 Recovery = 138.79%	69.394 ug/ml
Target Compounds			
2) T Naphthalene (C11.7)	5.705	302551	1.547 ug/ml
3) T 2-Methylnaphthalene (...)	6.757	7786431	40.744 ug/ml
5) T Acenaphthylene (C15.06)	8.015	8171026	42.135 ug/ml
7) T Acenaphthene (C15.5)	8.315	2271646	11.810 ug/ml
8) T Fluorene (C16.55)	9.100	6109934	31.847 ug/ml
9) T Phenanthrene (C19.36)	10.495	13013119	70.992 ug/ml
10) T Anthracene (C19.43)	10.566	4451296	23.769 ug/ml
12) T Fluoranthene (C21.85)	12.296	7602587	41.516 ug/ml
13) T Pyrene (C20.8)	12.587	3497248	19.344 ug/ml
14) T Benzo[a]anthracene (C...)	14.452	314230	1.910 ug/ml
15) T Chrysene (C27.41)	14.491	419704	2.398 ug/ml
16) T benzo[b]fluoranthene ...	16.001	378346	2.408 ug/ml
17) T Bnezo[k]fluoranthene ...	16.001	378346	2.318 ug/ml
18) T Benzo[a]pyrene (C31.34)	16.380	180002	1.207 ug/ml
19) T Indeno[1,2,3-cd]pyren...	17.749	139288	1.128 ug/ml
20) T Dibenz[a,h]anthracene...	17.749	139288	0.888 ug/ml
21) T Benzo[g,h,i]perylene ...	17.998	146366	1.026 ug/ml

(f)=RT Delta > 1/2 Window

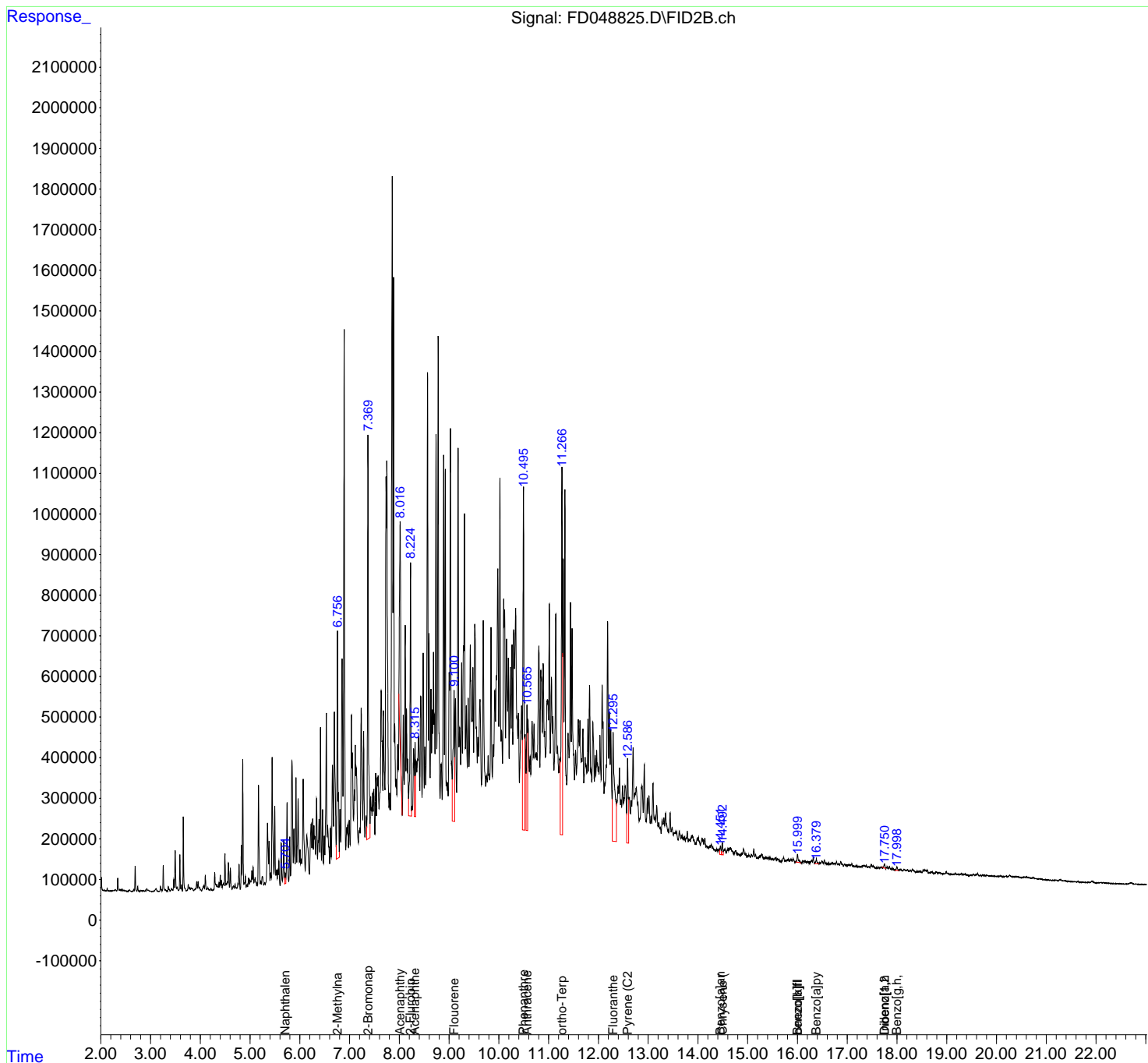
(m)=manual int.

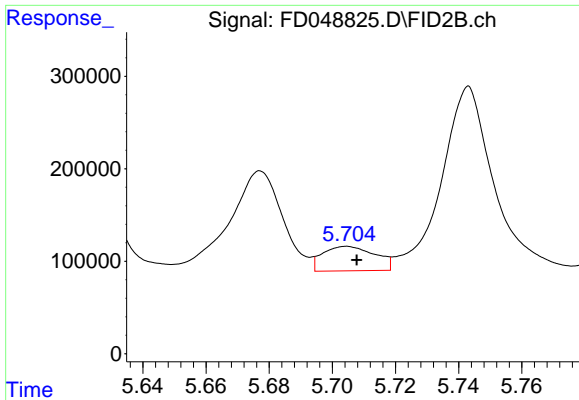
Data Path : Z:\pestpcbsrv\HPCHEM1\FID\_D\Data\FD112724AR\  
 Data File : FD048825.D  
 Signal(s) : FID2B.ch  
 Acq On : 27 Nov 2024 10:02  
 Operator : YP/AJ  
 Sample : P5002-01  
 Misc :  
 ALS Vial : 64 Sample Multiplier: 1

Instrument :  
 FID\_D  
 ClientSampleId :

Integration File: autoint1.e  
 Quant Time: Nov 28 02:39:13 2024  
 Quant Method : Z:\pestpcbsrv\HPCHEM1\FID\_D\methods\Aromatic EPH 111424.M  
 Quant Title : GC Extractables  
 QLast Update : Thu Nov 14 14:16:25 2024  
 Response via : Initial Calibration  
 Integrator: ChemStation

Volume Inj. : 1 µl  
 Signal Phase : Rxi-1ms  
 Signal Info : 20M x 0.18mm x 0.18µm

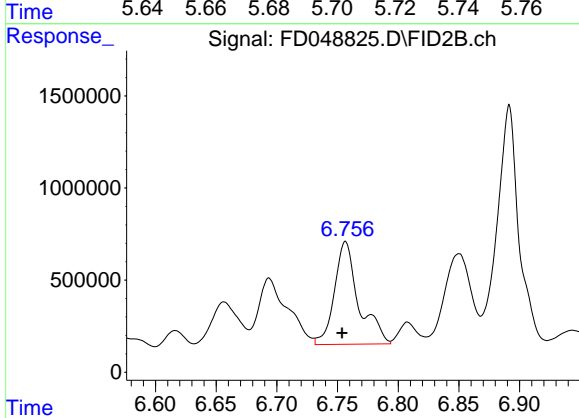




#2 Naphthalene (C11.7)

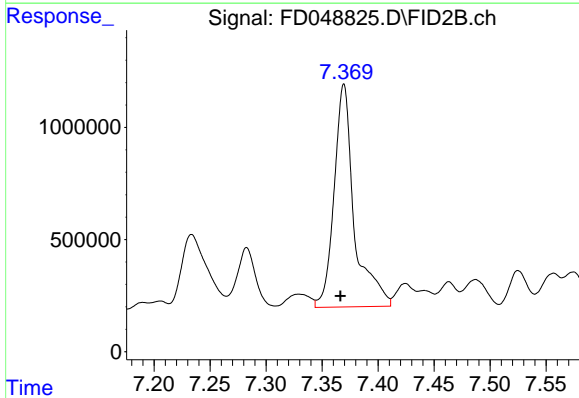
R.T.: 5.705 min  
 Delta R.T.: -0.003 min  
 Response: 302551  
 Conc: 1.55 ug/ml

Instrument :  
 FID\_D  
 ClientSampleId :



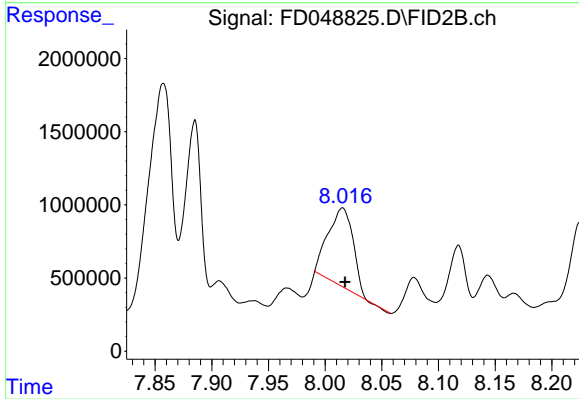
#3 2-Methylnaphthalene (C12.89)

R.T.: 6.757 min  
 Delta R.T.: 0.003 min  
 Response: 7786431  
 Conc: 40.74 ug/ml



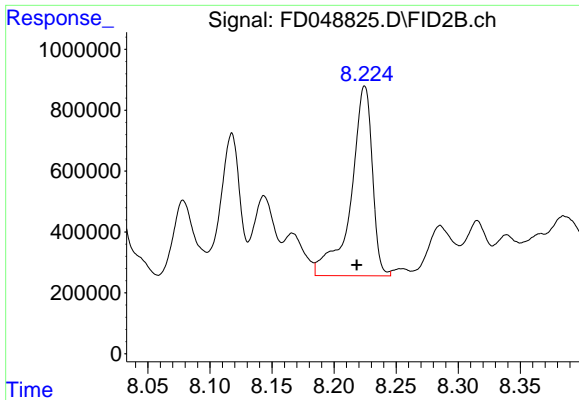
#4 2-Bromonaphthalene (SURR)

R.T.: 7.369 min  
 Delta R.T.: 0.003 min  
 Response: 12406185  
 Conc: 70.47 ug/ml



#5 Acenaphthylene (C15.06)

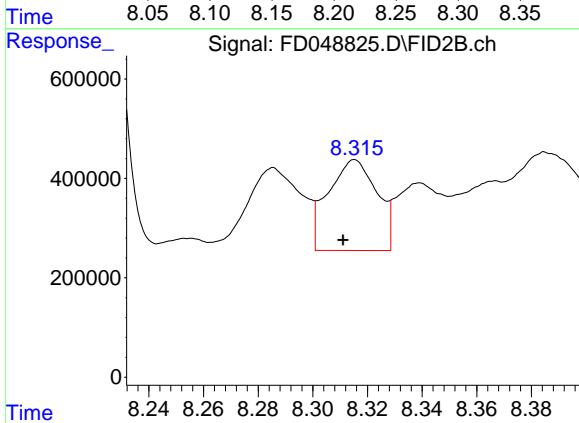
R.T.: 8.015 min  
 Delta R.T.: -0.002 min  
 Response: 8171026  
 Conc: 42.13 ug/ml



#6 2-Fluorobiphenyl (SURR)

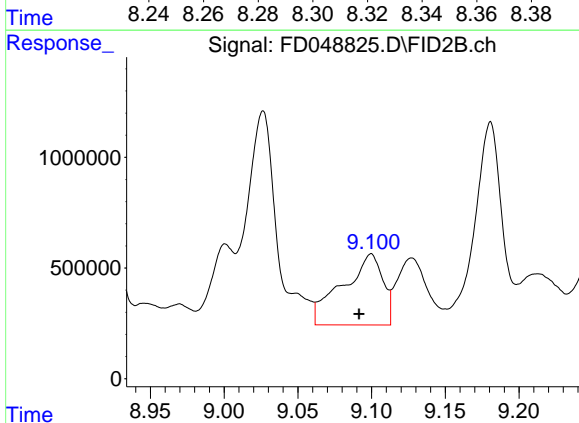
R.T.: 8.224 min  
 Delta R.T.: 0.006 min  
 Response: 7467975  
 Conc: 64.84 ug/ml

Instrument :  
 FID\_D  
 ClientSampleId :



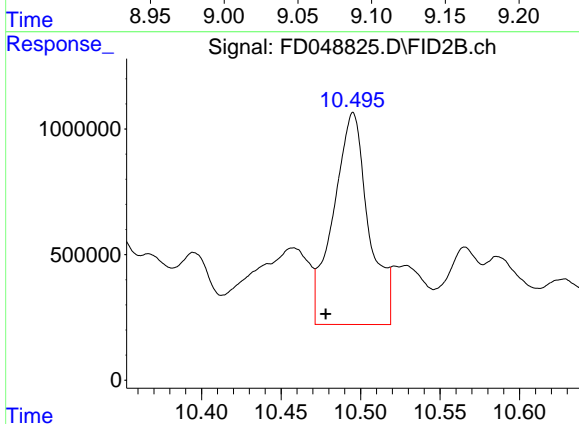
#7 Acenaphthene (C15.5)

R.T.: 8.315 min  
 Delta R.T.: 0.004 min  
 Response: 2271646  
 Conc: 11.81 ug/ml



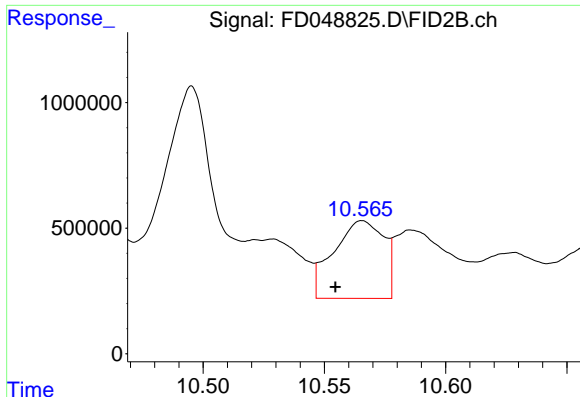
#8 Flouorene (C16.55)

R.T.: 9.100 min  
 Delta R.T.: 0.008 min  
 Response: 6109934  
 Conc: 31.85 ug/ml



#9 Phenanthrene (C19.36)

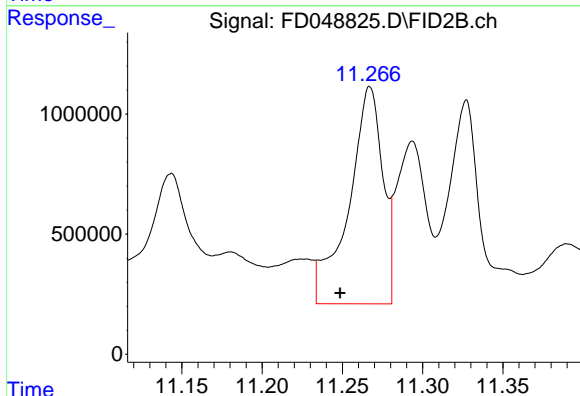
R.T.: 10.495 min  
 Delta R.T.: 0.017 min  
 Response: 13013119  
 Conc: 70.99 ug/ml



#10 Anthracene (C19.43)

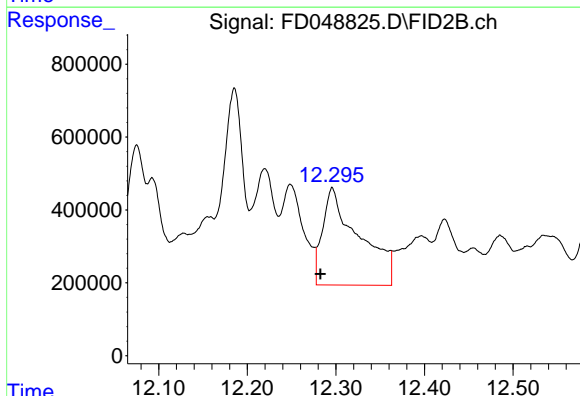
R.T.: 10.566 min  
 Delta R.T.: 0.011 min  
 Response: 4451296  
 Conc: 23.77 ug/ml

Instrument :  
 FID\_D  
 ClientSampleId :



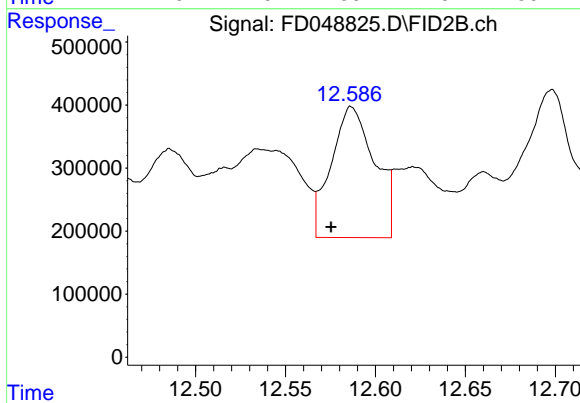
#11 ortho-Terphenyl (SURR)

R.T.: 11.267 min  
 Delta R.T.: 0.018 min  
 Response: 13346930  
 Conc: 69.39 ug/ml



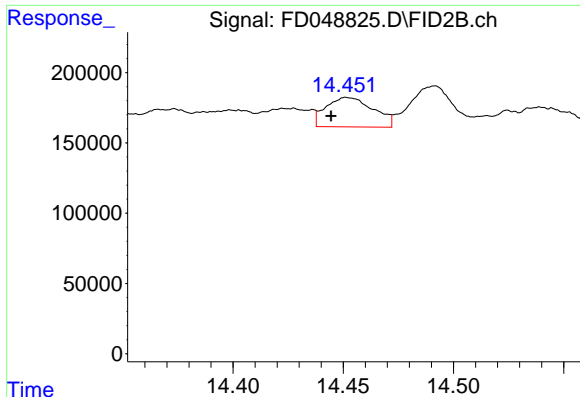
#12 Fluoranthene (C21.85)

R.T.: 12.296 min  
 Delta R.T.: 0.014 min  
 Response: 7602587  
 Conc: 41.52 ug/ml



#13 Pyrene (C20.8)

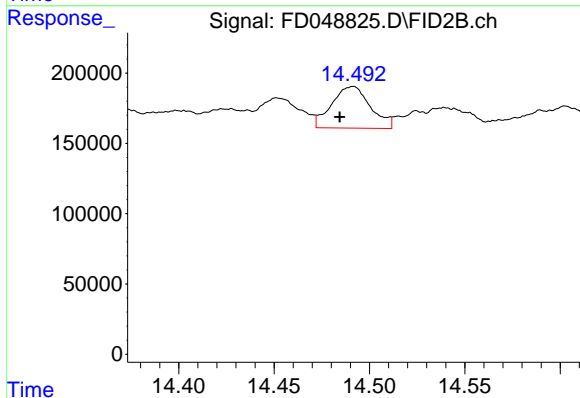
R.T.: 12.587 min  
 Delta R.T.: 0.012 min  
 Response: 3497248  
 Conc: 19.34 ug/ml



#14 Benzo[a]anthracene (C26.37)

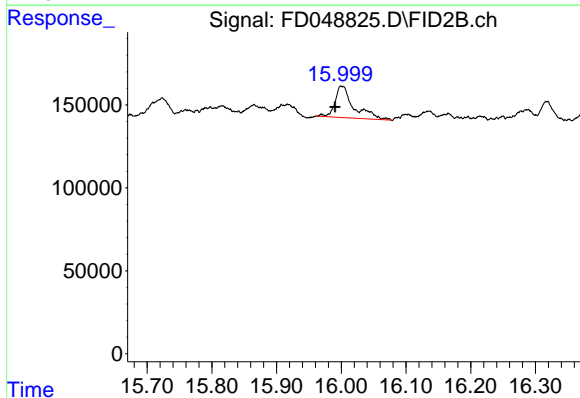
R.T.: 14.452 min  
Delta R.T.: 0.008 min  
Response: 314230  
Conc: 1.91 ug/ml

Instrument :  
FID\_D  
ClientSampleId :



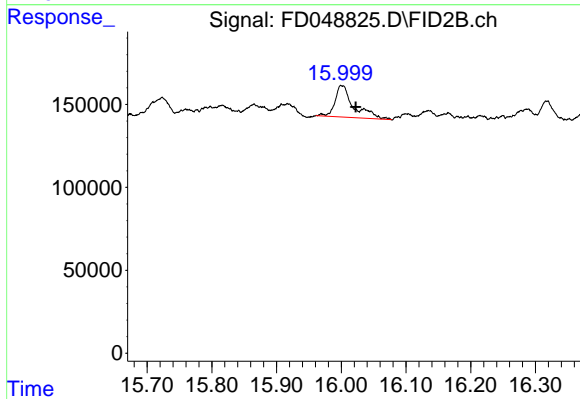
#15 Chrysene (C27.41)

R.T.: 14.491 min  
Delta R.T.: 0.006 min  
Response: 419704  
Conc: 2.40 ug/ml



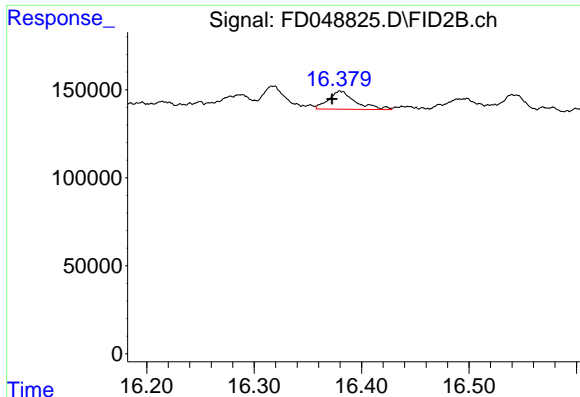
#16 benzo[b]fluoranthene (C30.41)

R.T.: 16.001 min  
Delta R.T.: 0.011 min  
Response: 378346  
Conc: 2.41 ug/ml



#17 Bnezo[k]fluoranthene (C30.14)

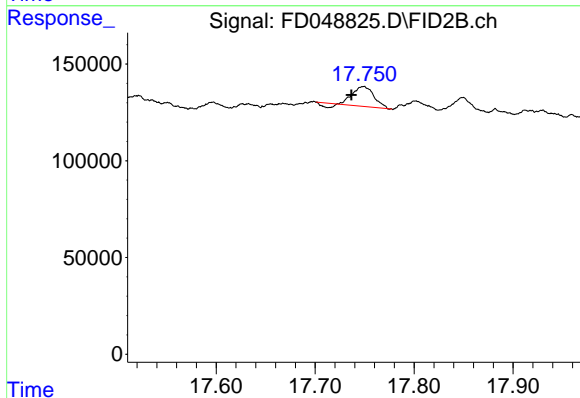
R.T.: 16.001 min  
Delta R.T.: -0.021 min  
Response: 378346  
Conc: 2.32 ug/ml



#18 Benzo[a]pyrene (C31.34)

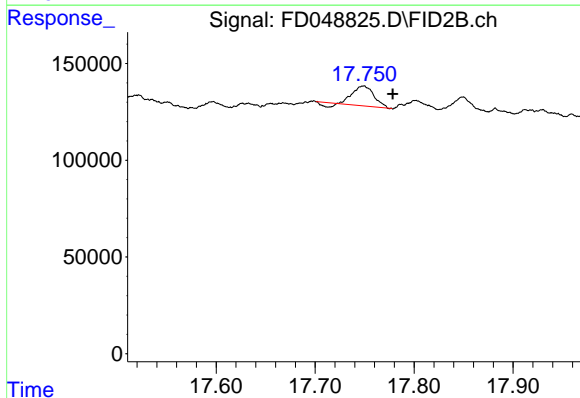
R.T.: 16.380 min  
 Delta R.T.: 0.008 min  
 Response: 180002  
 Conc: 1.21 ug/ml

Instrument :  
 FID\_D  
 ClientSampleId :



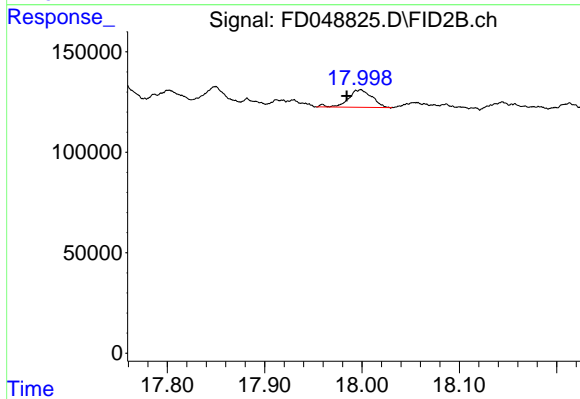
#19 Indeno[1,2,3-cd]pyrene (C35.01)

R.T.: 17.749 min  
 Delta R.T.: 0.012 min  
 Response: 139288  
 Conc: 1.13 ug/ml



#20 Dibenz[a,h]anthracene (C30.36)

R.T.: 17.749 min  
 Delta R.T.: -0.030 min  
 Response: 139288  
 Conc: 0.89 ug/ml



#21 Benzo[g,h,i]perylene (C34.01)

R.T.: 17.998 min  
 Delta R.T.: 0.014 min  
 Response: 146366  
 Conc: 1.03 ug/ml