

Data Path : Z:\pestpcbsrv\HPCHEM1\FID_D\Data\FD120122AR\
 Data File : FD044580.D
 Signal(s) : FID2B.ch
 Acq On : 02 Dec 2022 17:59
 Operator : YP/AJ
 Sample : N5806-11
 Misc :
 ALS Vial : 74 Sample Multiplier: 1

Instrument :
 FID_D
 ClientSampleId :
 EPH-2

Integration File: sample.E
 Quant Time: Dec 03 01:45:33 2022
 Quant Method : Z:\pestpcbsrv\HPCHEM1\FID_D\methods\Aromatic EPH 112922.M
 Quant Title : GC Extractables
 QLast Update : Tue Nov 29 00:29:41 2022
 Response via : Initial Calibration
 Integrator: ChemStation

Volume Inj. : 1 µl
 Signal Phase : Rxi-1ms
 Signal Info : 20M x 0.18mm x 0.18µm

Compound	R.T.	Response	Conc Units

System Monitoring Compounds			
4) S 2-Bromonaphthalene (S...	7.680	6517647	50.221 ug/ml
Spiked Amount 50.000		Recovery =	100.44%
6) S 2-Fluorobiphenyl (SURR)	8.539	4370791	49.490 ug/ml
Spiked Amount 50.000 Range 0 - 131		Recovery =	98.98%
11) S ortho-Terphenyl (SURR)	11.568	5210473	32.016 ug/ml
Spiked Amount 50.000		Recovery =	64.03%

Target Compounds

(f)=RT Delta > 1/2 Window

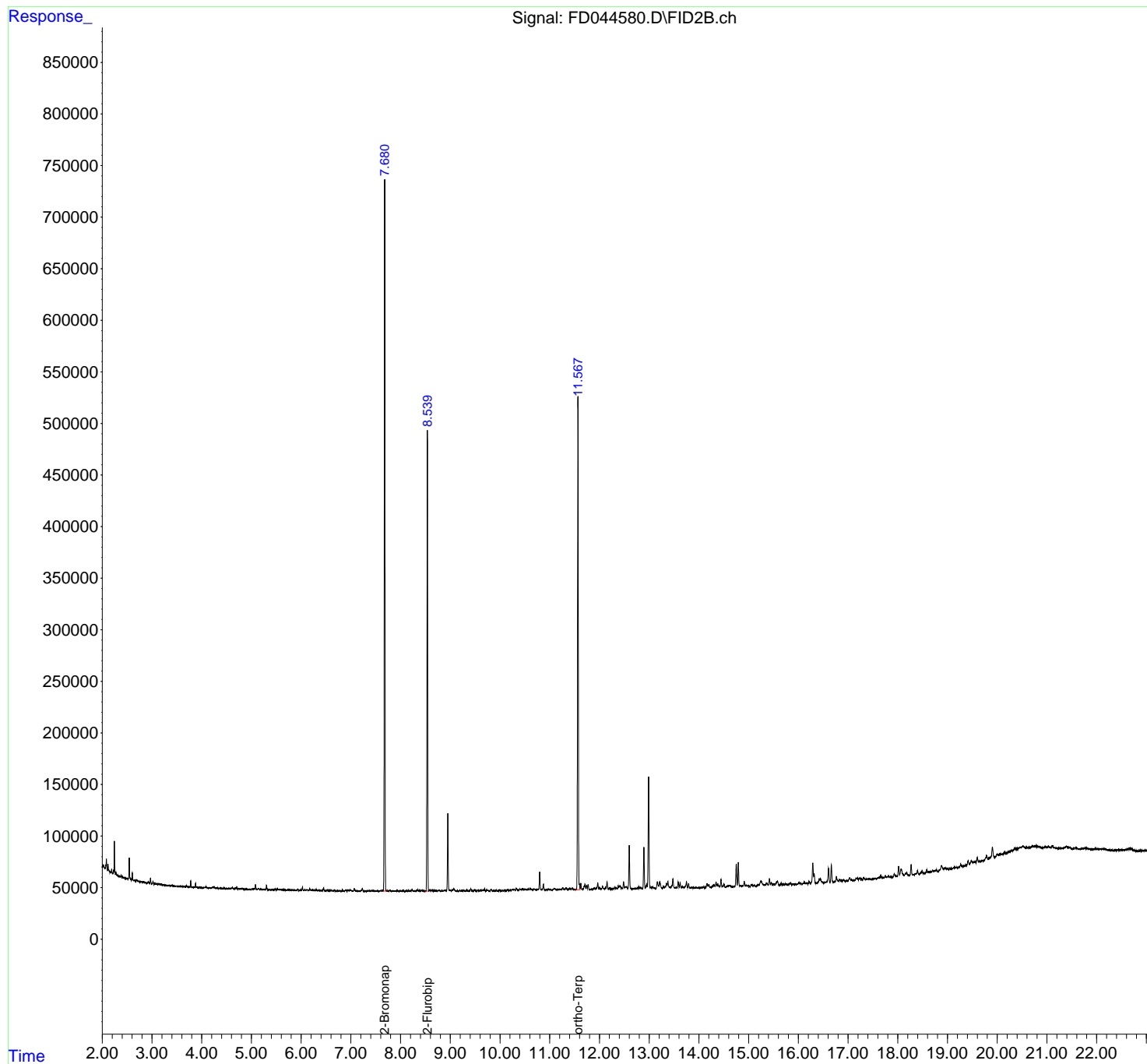
(m)=manual int.

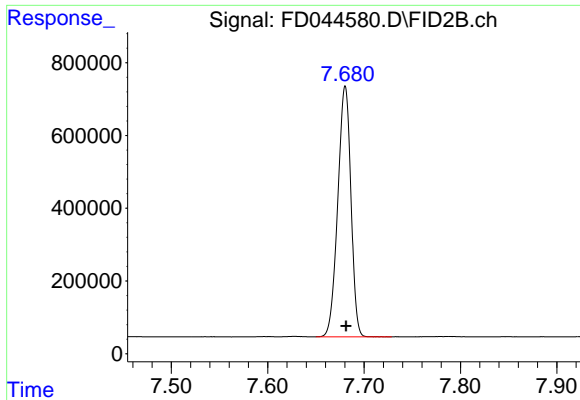
Data Path : Z:\pestpcbsrv\HPCHEM1\FID_D\Data\FD120122AR\
Data File : FD044580.D
Signal(s) : FID2B.ch
Acq On : 02 Dec 2022 17:59
Operator : YP/AJ
Sample : N5806-11
Misc :
ALS Vial : 74 Sample Multiplier: 1

Instrument :
FID_D
ClientSampleId :
EPH-2

Integration File: sample.E
Quant Time: Dec 03 01:45:33 2022
Quant Method : Z:\pestpcbsrv\HPCHEM1\FID_D\methods\Aromatic EPH 112922.M
Quant Title : GC Extractables
QLast Update : Tue Nov 29 00:29:41 2022
Response via : Initial Calibration
Integrator: ChemStation

Volume Inj. : 1 µl
Signal Phase : Rxi-1ms
Signal Info : 20M x 0.18mm x 0.18µm

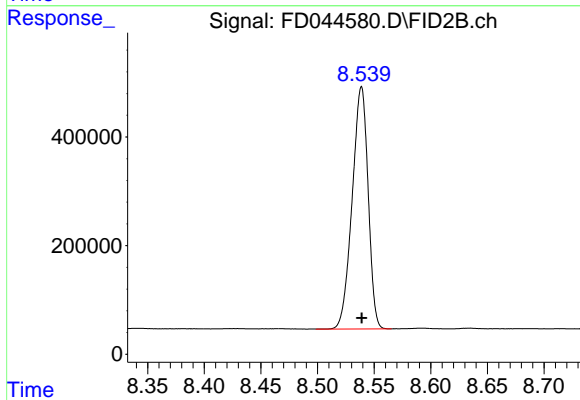




#4 2-Bromonaphthalene (SURR)

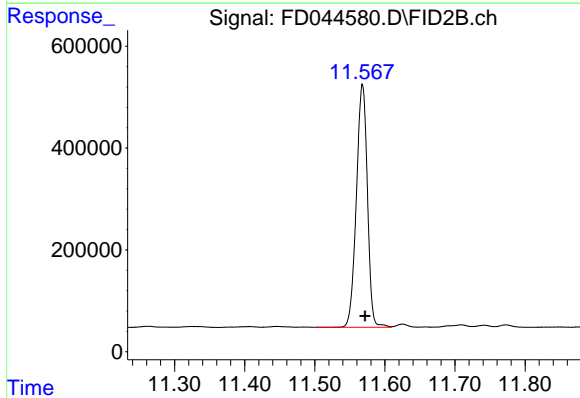
R.T.: 7.680 min
 Delta R.T.: -0.001 min
 Response: 6517647
 Conc: 50.22 ug/ml

Instrument :
 FID_D
 ClientSampleId :
 EPH-2



#6 2-Fluorobiphenyl (SURR)

R.T.: 8.539 min
 Delta R.T.: 0.000 min
 Response: 4370791
 Conc: 49.49 ug/ml



#11 ortho-Terphenyl (SURR)

R.T.: 11.568 min
 Delta R.T.: -0.004 min
 Response: 5210473
 Conc: 32.02 ug/ml