

Data Path : Z:\pestpcbsrv\HPCHEM1\FID_D\Data\FD120122AR\
 Data File : FD044581.D
 Signal(s) : FID2B.ch
 Acq On : 02 Dec 2022 18:42
 Operator : YP/AJ
 Sample : N5807-04
 Misc :
 ALS Vial : 75 Sample Multiplier: 1

Instrument :
 FID_D
 ClientSampleId :
 COMP-3

Integration File: sample.E
 Quant Time: Dec 03 01:45:45 2022
 Quant Method : Z:\pestpcbsrv\HPCHEM1\FID_D\methods\Aromatic EPH 112922.M
 Quant Title : GC Extractables
 QLast Update : Tue Nov 29 00:29:41 2022
 Response via : Initial Calibration
 Integrator: ChemStation

Volume Inj. : 1 µl
 Signal Phase : Rxi-1ms
 Signal Info : 20M x 0.18mm x 0.18µm

Compound	R.T.	Response	Conc Units

System Monitoring Compounds			
4) S 2-Bromonaphthalene (S...	7.680	6762082	52.104 ug/ml
Spiked Amount 50.000		Recovery =	104.21%
6) S 2-Fluorobiphenyl (SURR)	8.538	4576023	51.814 ug/ml
Spiked Amount 50.000 Range 0 - 131		Recovery =	103.63%
11) S ortho-Terphenyl (SURR)	11.566	5523818	33.942 ug/ml
Spiked Amount 50.000		Recovery =	67.88%

Target Compounds

(f)=RT Delta > 1/2 Window

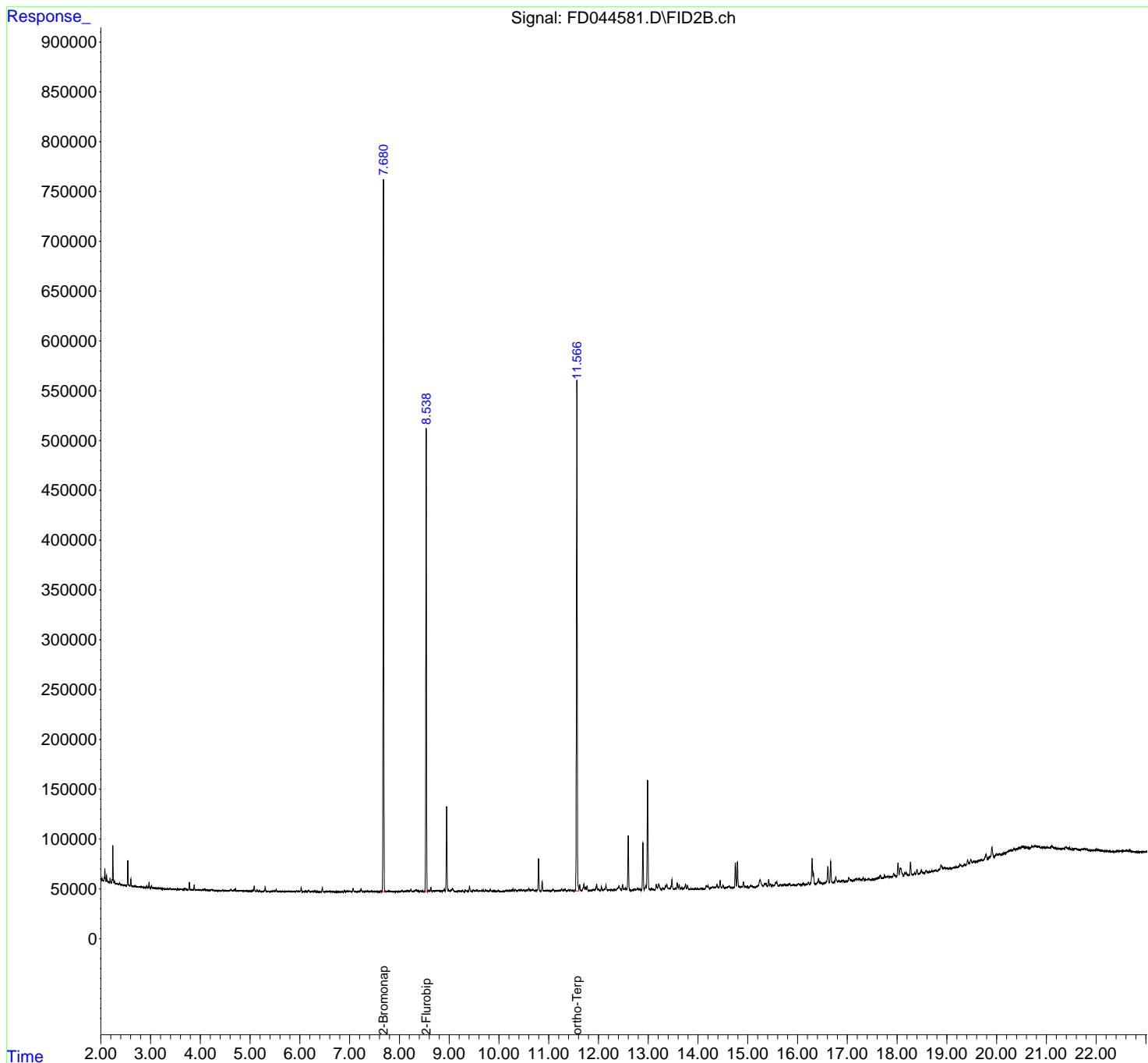
(m)=manual int.

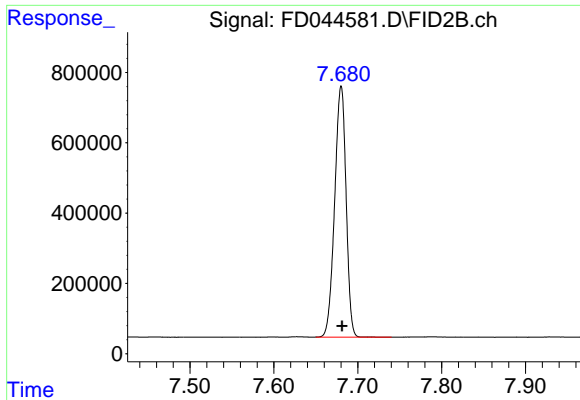
Data Path : Z:\pestpcbsrv\HPCHEM1\FID_D\Data\FD120122AR\
Data File : FD044581.D
Signal(s) : FID2B.ch
Acq On : 02 Dec 2022 18:42
Operator : YP/AJ
Sample : N5807-04
Misc :
ALS Vial : 75 Sample Multiplier: 1

Instrument :
FID_D
ClientSampleId :
COMP-3

Integration File: sample.E
Quant Time: Dec 03 01:45:45 2022
Quant Method : Z:\pestpcbsrv\HPCHEM1\FID_D\methods\Aromatic EPH 112922.M
Quant Title : GC Extractables
QLast Update : Tue Nov 29 00:29:41 2022
Response via : Initial Calibration
Integrator: ChemStation

Volume Inj. : 1 µl
Signal Phase : Rxi-1ms
Signal Info : 20M x 0.18mm x 0.18µm

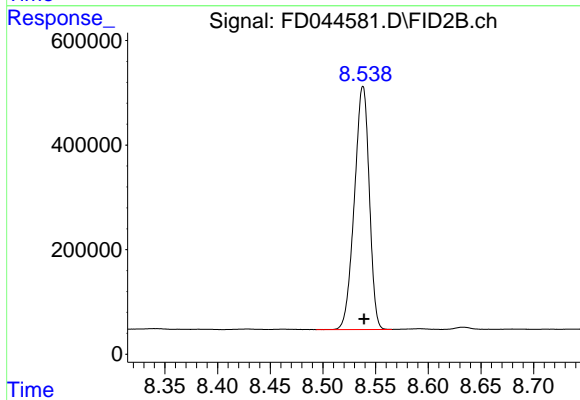




#4 2-Bromonaphthalene (SURR)

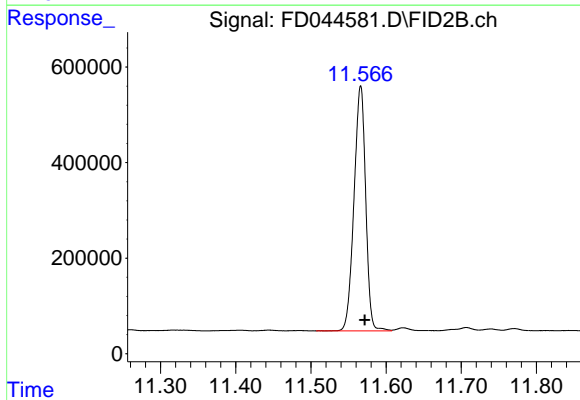
R.T.: 7.680 min
Delta R.T.: -0.001 min
Response: 6762082
Conc: 52.10 ug/ml

Instrument :
FID_D
ClientSampleId :
COMP-3



#6 2-Fluorobiphenyl (SURR)

R.T.: 8.538 min
Delta R.T.: -0.001 min
Response: 4576023
Conc: 51.81 ug/ml



#11 ortho-Terphenyl (SURR)

R.T.: 11.566 min
Delta R.T.: -0.006 min
Response: 5523818
Conc: 33.94 ug/ml